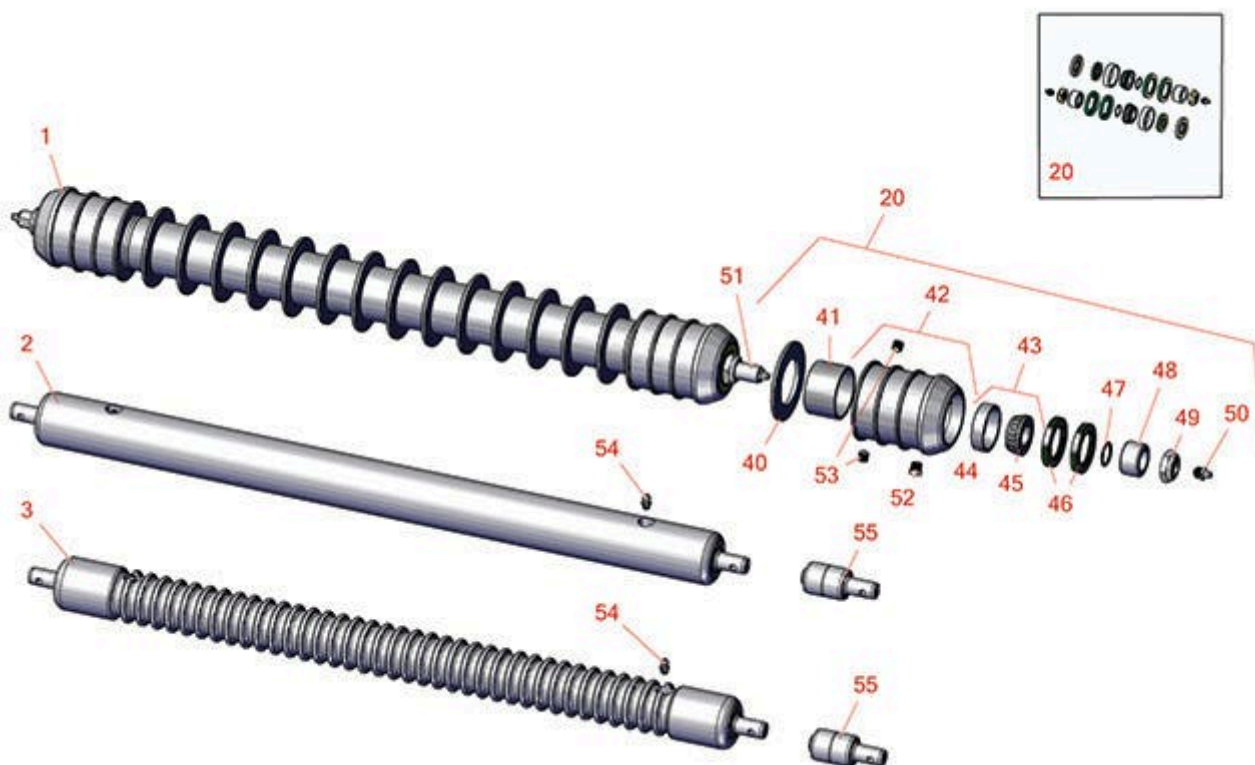




# Replaces John Deere 260SL Walk-Behind Greens Mower Parts

Cutting Unit  
Rollers



All original equipment manufacturers names and part numbers are used for identification purposes only, and we are in no way implying that our products are original equipment parts. Prices subject to change without notice.



# Replaces John Deere 260SL Walk-Behind Greens Mower Parts

Cutting Unit  
Rollers



Item No	R&R Part No.	OEM Part No.	Description	Qty Req	Order Quantity
---------	--------------	--------------	-------------	---------	----------------

## R&R Rollers

1	<b>R500509</b>	AMT2968, BM25318	Roller - Grooved Repairable Steel - 26	1	
---	----------------	---------------------	--	---	--

*Detail Description: Constructed with a through shaft and greasable ball bearings. This roller can be repaired by unscrewing the ends and replacing the series of washers and spacers.:*

2	<b>RAMT2787</b>	AMT2787, AMT2982	Roller - Smooth Solid Steel	1	
---	-----------------	---------------------	-----------------------------	---	--

*Detail Description: Machined from solid steel, this heavy weight roller uses greasable "water-pump" style bearings.:*

3	<b>RAMT2785</b>	AMT2785	Roller - Grooved Machined Solid Steel	1	
---	-----------------	---------	---------------------------------------	---	--

*Detail Description: Machined from solid steel, this heavy weight roller uses greasable "water-pump" style bearings.:*

## Overhaul Kits

20	<b>RAET10632</b>	AET10632	Overhaul Kit - Roller	1	
----	------------------	----------	-----------------------	---	--

*Detail Description: Includes 4 ea: RET15755 Seal; 2 ea: R237-54 O-Ring, R253-122 Seal, R254-78 Bearing, R254-79 Cup, R3296-15 Locknut, R471219 Grease Zerk, RET15726 Sleeve, RET15756 Seal:*

## Other Parts Available

40	<b>R150673</b>		Washer - 3 Repairable Roller	11	
----	----------------	--	------------------------------	----	--

41	<b>R150676</b>		Spacer - 2-3/4 Dia x 1-1/4 L	10	
----	----------------	--	------------------------------	----	--

42	<b>R500511</b>		Roller End - Threaded 3	2	
----	----------------	--	-------------------------	---	--

43	<b>R500534</b>		Bearing - with Cup	2	
----	----------------	--	--------------------	---	--

*Detail Description: Kit includes: 1 ea R254-78- Bearing Cone & R254-79 Bearing Cone:*

44	<b>R254-78</b>	JD8188	Tapered Bearing Cone	2	
----	----------------	--------	----------------------	---	--

45	<b>R254-79</b>	JD8226	Cup - Bearing	2	
----	----------------	--------	---------------	---	--

All original equipment manufacturers names and part numbers are used for identification purposes only, and we are in no way implying that our products are original equipment parts. Prices subject to change without notice.



# Replaces John Deere 260SL Walk-Behind Greens Mower Parts

Cutting Unit  
Rollers



Item No	R&R Part No.	OEM Part No.	Description	Qty Req	Order Quantity
<i>Detail Description: Use R254-79M installation mandrel to properly install race.:</i>					
46	<b>RET15755</b>	ET15755	Seal - Oil	2	
47	<b>R237-54</b>	U46731, U6731	O-Ring - Small	2	
48	<b>RET15726</b>	ET15726, RET15726	Sleeve - Wear Hardened	2	
49	<b>R3296-15</b>	N101345	Locknut - 3/4-16 Nylon Jam	2	
50	<b>R471219</b>	471219, 471231, JD7759, JD7798	Zerk - Grease	2	
51	<b>RET17514</b>	ET17514	Shaft - 26 Roller	1	
52	<b>R170714</b>	E14814	Fitting - Pressure Relief	2	
53	<b>R150691</b>		Screw - Set Nyloc 3/8-16 x 3/8	4	
54	<b>R302-5</b>	JD7797, JD7842, JD7844	Fitting - Grease	2	
55	<b>RAA35741</b>	AA35741, AET10129, TCA22836	Bearing	2	
<i>Detail Description: 1/4" Side Hole:</i>					

All original equipment manufacturers names and part numbers are used for identification purposes only, and we are in no way implying that our products are original equipment parts. Prices subject to change without notice.