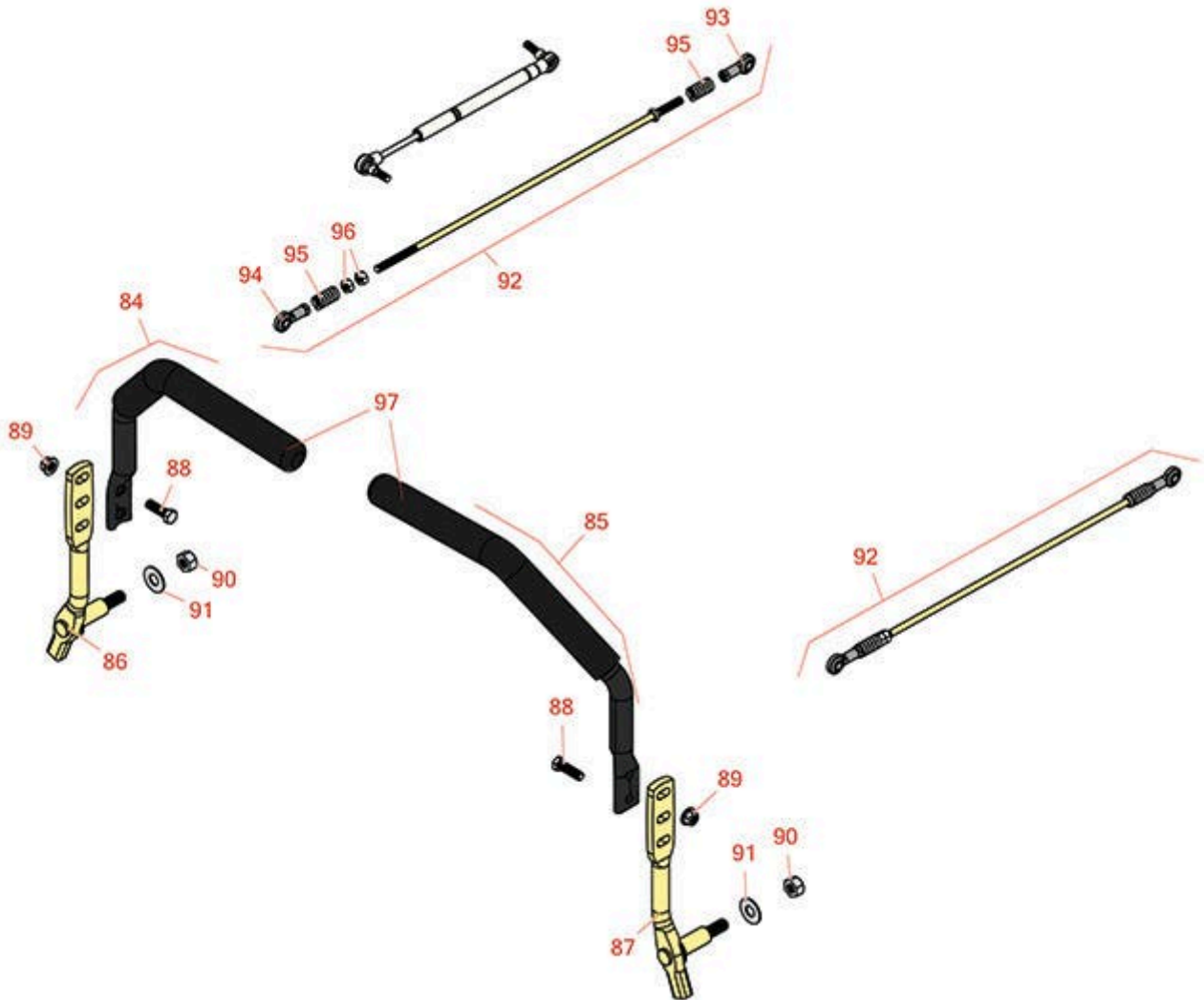




Replaces Toro Z Master Commercial 3000 Parts

Zero Turn Mower with 52in Deck - Model 74953
Controls



All original equipment manufacturers names and part numbers are used for identification purposes only, and we are in no way implying that our products are original equipment parts. Prices subject to change without notice.



Replaces Toro Z Master Commercial 3000 Parts

Zero Turn Mower with 52in Deck - Model 74953
Controls



| Item No | R&R Part No. | OEM Part No. | Description | Qty Req | Order Quantity |
|---------|------------------|---|--------------------------------|---------|----------------|
| 84 | R109-6589 | 109-6589 | RH Steering Handle Assy | 1 | |
| 85 | R109-6590 | 109-6590 | LH Steering Handle Assy | 1 | |
| 86 | R116-0039 | 116-0039 | Lever - Motion Control - RH | 1 | |
| 87 | R116-0040 | 116-0040 | Lever - Motion Control - LH | 1 | |
| 88 | R400264 | 01-150-0180, 01-178-0610, 20-48-AD, 20-48-AGD, 32-9160, 3224-3, 323-29, 323-7, 400264, 908035P | Bolt - Hex HD 3/8-16 x 1-1/4 | 4 | |
| 89 | R104-8301 | 104-8301, 104-9301, 109-6658, 133-7570 | Locknut - 3/8-16 Nylon Flanged | 4 | |
| 90 | R443818 | 01-191-0813, 3218-18, 3218-5, 3248-18 | Nut - 1/2-13 Hex Jam Zinc | 2 | |
| 91 | R453017 | 01-166-0050, 01-166-0240, 01-166-0800, 24-13-AD, 24-14-AD, 32-8110, 3256-26, 3256-6, 453017, 69-8980, 87-7270 | Washer - Flat 1/2 | 2 | |
| 92 | R109-8107 | 109-8107 | Pump Linkage Rear Assembly | 2 | |
| 93 | R1-633152 | 1-633152 | Balljoint - LH | 2 | |

All original equipment manufacturers names and part numbers are used for identification purposes only, and we are in no way implying that our products are original equipment parts. Prices subject to change without notice.



Replaces Toro Z Master Commercial 3000 Parts

Zero Turn Mower with 52in Deck - Model 74953
Controls



| Item No | R&R Part No. | OEM Part No. | Description | Qty Req | Order Quantity |
|---------|------------------|--|-----------------------------|---------|----------------|
| 94 | R1-543017 | 1-543017 | Balljoint - RH | 2 | |
| 95 | R1-323245 | 1-323245 | Spring - Compression | 4 | |
| 96 | R3219-2 | 01-188-0524, 22-12-BJKD, 3219-2, 915720 | Nut - 5/16-24 Zinc | 4 | |
| 97 | R109-5668 | 109-5668 | Grip - Control Lever - Foam | 2 | |

All original equipment manufacturers names and part numbers are used for identification purposes only, and we are in no way implying that our products are original equipment parts. Prices subject to change without notice.