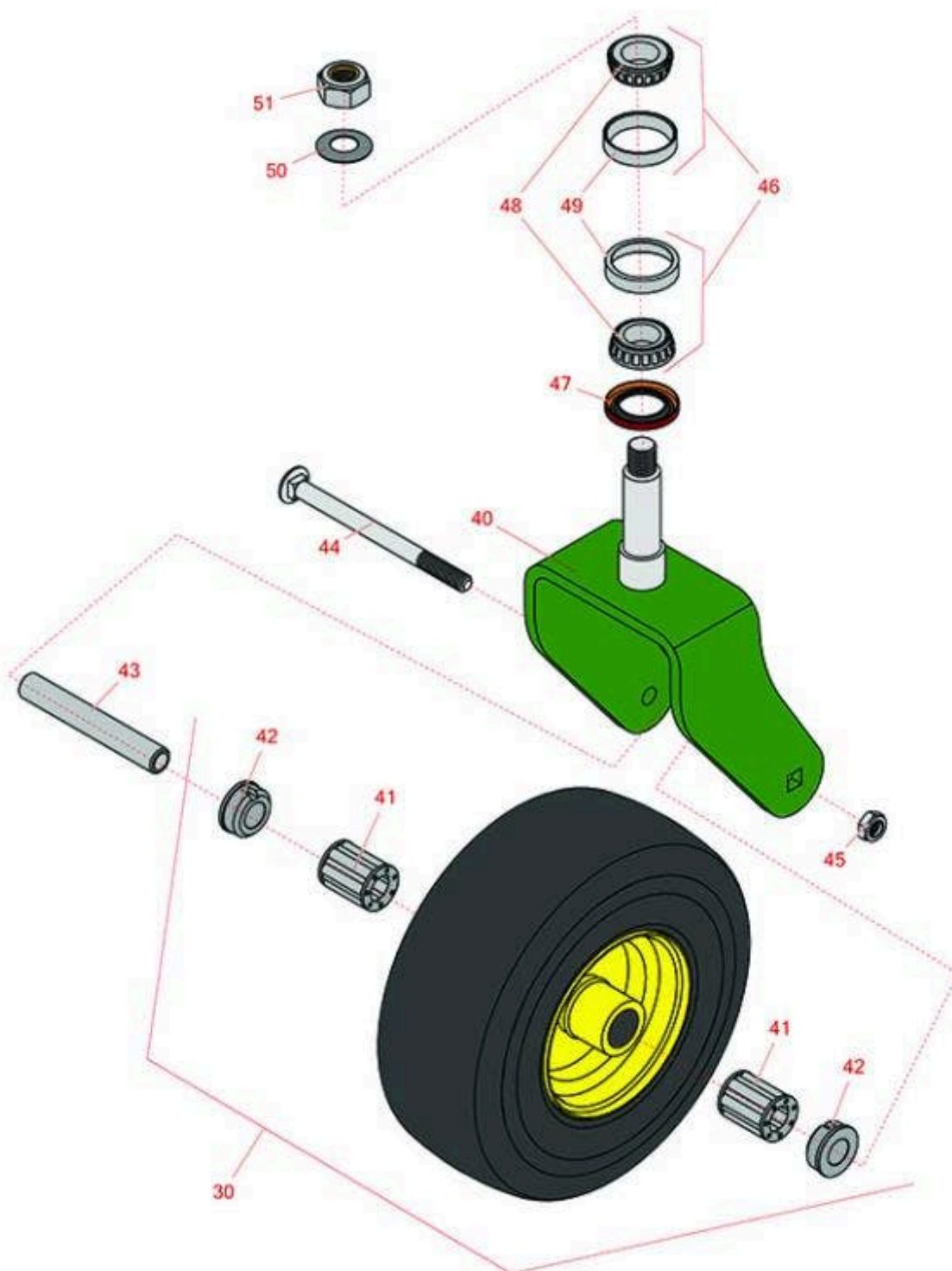




# Replaces John Deere 652M Quik-Trak Stand-On Mower Parts

Rotary Mower  
Caster Wheel



All original equipment manufacturers names and part numbers are used for identification purposes only, and we are in no way implying that our products are original equipment parts. Prices subject to change without notice.



# Replaces John Deere 652M Quik-Trak Stand-On Mower Parts

Rotary Mower  
Caster Wheel



| Item No | R&R Part No. | OEM Part No. | Description | Qty Req | Order Quantity |
|---------|--------------|--------------|-------------|---------|----------------|
|---------|--------------|--------------|-------------|---------|----------------|

## Tires

|    |                  |          |  |   |  |
|----|------------------|----------|--|---|--|
| 30 | <b>RTCA20363</b> | TCA20363 | Wheel and Tire Assy - Foam Filled 11x4.00-5 Sm | 2 |  |
|----|------------------|----------|--|---|--|

## Other Parts Available

|    |                  |                             |                                    |   |  |
|----|------------------|-----------------------------|------------------------------------|---|--|
| 40 | <b>RTCA24412</b> | TCA24412                    | Castor Fork                        | 2 |  |
| 41 | <b>R63-8580</b>  | TCU12034                    | Bearing - Roller - 1" Long         | 4 |  |
| 42 | <b>R62-5580</b>  | TCU12600                    | Bearing - Flanged - Caster         | 4 |  |
| 43 | <b>RM84516</b>   | M84516                      | Spacer - Caster Wheel              | 2 |  |
| 44 | <b>R03H2052</b>  | 03H2052                     | Bolt- 1/2 x 6-1/2 Carriage         | 2 |  |
| 45 | <b>R151047</b>   | TCU34377                    | Nut - 1/2-13 Hex Nylon Jam         | 2 |  |
| 46 | <b>R500596</b>   | R & R ONLY,<br>R AND R ONLY | Tapered Bearing Set - Cup and Cone | 4 |  |
| 47 | <b>RTC37583</b>  | TCU37583                    | Seal                               | 2 |  |
| 48 | <b>R254-94</b>   | JD8933,<br>TCU37582         | Tapered Bearing Cone               | 4 |  |
| 49 | <b>R254-72</b>   | JD8253                      | Cup - Bearing                      | 4 |  |
| 50 | <b>RTC37615</b>  | TCU37615                    | Washer - Belleville                | 2 |  |
| 51 | <b>RTC34381</b>  | TCU34381                    | Nut - 3/4-10 Jam Nyloc             | 2 |  |

All original equipment manufacturers names and part numbers are used for identification purposes only, and we are in no way implying that our products are original equipment parts. Prices subject to change without notice.