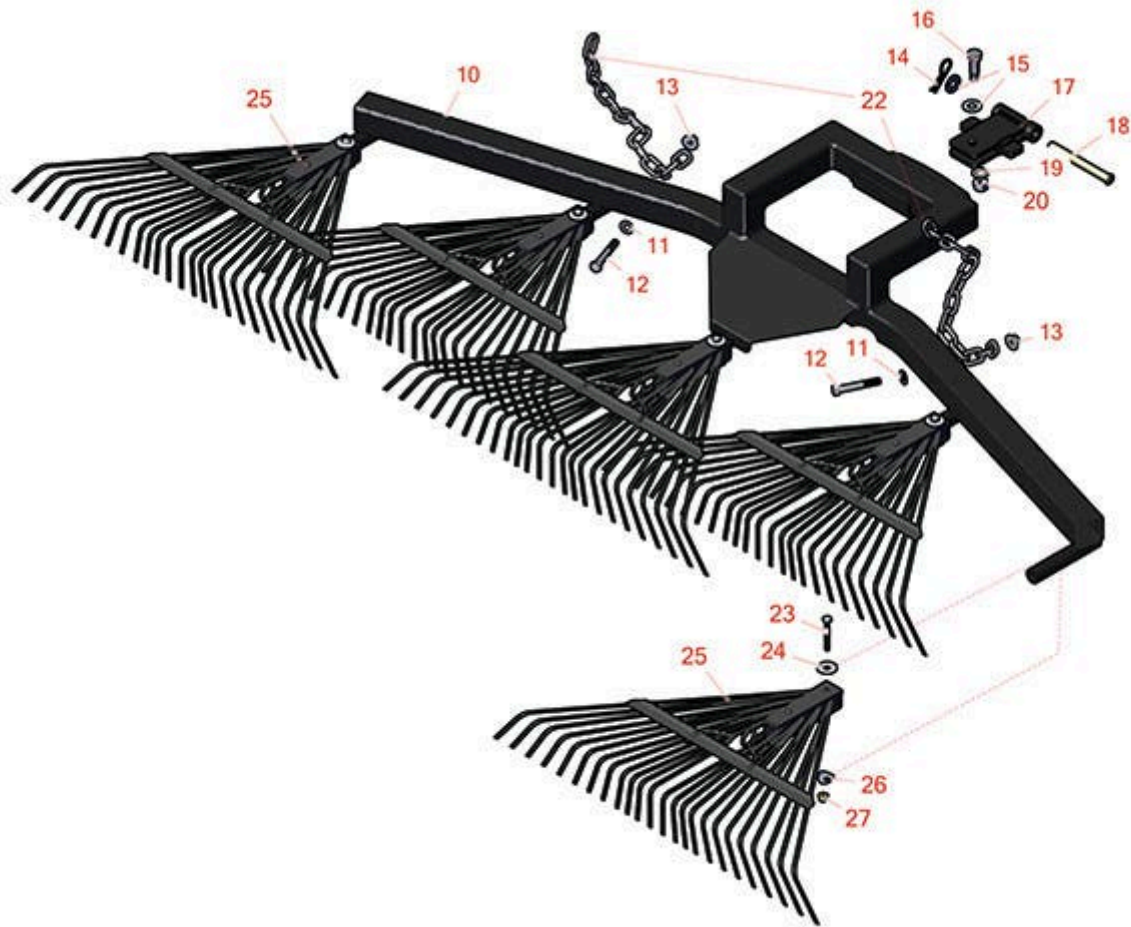
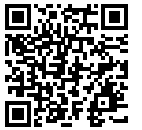




Replaces Toro Sand Pro 5020 Parts

Attachments

Spring Rake - Model 08813



All original equipment manufacturers names and part numbers are used for identification purposes only, and we are in no way implying that our products are original equipment parts. Prices subject to change without notice.



Replaces Toro Sand Pro 5020 Parts

Attachments

Spring Rake - Model 08813



Item R&R

No Part No.

OEM

Part No.

Description

Qty
Req

Order
Quantity

Other Parts Available

10	R85-0310-03	85-0310, 85-0310-03	Hanger Assy	1
11	R453011	01-166-0100, 01-166-0120, 01-166-0270, 01-166-0500, 01-166-0600, 01-166-0620, 132-4593, 2356-3, 237-12, 24-10-AD, 24-11-AD, 24-11-BD, 24-12-AD, 24-12-BD, 30-9310, 32-8190, 3256-24, 3256-3, 3256-36, 3256-4, 453011, 47-9950, 48-9220, 513458, 7-0052	Washer - Flat 3/8 SAE Y/Zinc	8
11	R310266	3256-23, 3256-3, 3556-3	Washer - Flat 5/16 USS	2
11	R453009	01-166-0400, 24-10-BD, 24-9-AD, 32-9650, 3256-2, 3256-23, 3256-3, 3256-67, 3290-217, 3556-3, 4-2390, 7-0152	Washer - Flat 5/16 SAE	2

All original equipment manufacturers names and part numbers are used for identification purposes only, and we are in no way implying that our products are original equipment parts. Prices subject to change without notice.



Replaces Toro Sand Pro 5020 Parts

Attachments

Spring Rake - Model 08813



Item No	R&R Part No.	OEM Part No.	Description	Qty Req	Order Quantity
13	R32128-21	32128-21	Locknut - Flanged 3/8-16 Whiz Top Lock	2	
12	R101526	01-150-0970, 01-178-0620, 20-53-AGD, 321-11, 3224-8, 323-11, 323-12, 323-31, 323-4, 323-47	Bolt - Hex HD 3/8-16 x 2-1/2 GR5	2	
14	R3272-12	01-151-0090, 28-19-D, 3272-12	Pin - Cotter 1/8 x 1-1/4	1	
15	R3256-26	01-166-0540, 01-166-0820, 17-2530, 24-13-BD, 30-8570, 3256-26, 356206, 48-9390	Washer - 1/2 in	3	
15	R455012	3256-26, 41-8440	Washer - Flat 1/2 x 3/4	2	
15	R87-7270-01	87-7270	Washer - Flat 1/2	2	
15	R453017	01-166-0050, 01-166-0240, 01-166-0800, 24-13-AD, 24-14-AD, 32-8110, 3256-26, 3256-6, 453017, 69-8980, 87-7270	Washer - Flat 1/2	2	
16	R80-2050	80-2050	Bolt - Shoulder	1	
17	R84-2230-03	84-2230, 84-2230-03	Pivot Assy	1	

All original equipment manufacturers names and part numbers are used for identification purposes only, and we are in no way implying that our products are original equipment parts. Prices subject to change without notice.



Replaces Toro Sand Pro 5020 Parts

Attachments

Spring Rake - Model 08813



Item No	R&R Part No.	OEM Part No.	Description	Qty Req	Order Quantity
18	R283-83	283-83, 42194, 93-5343	Pin - Clevis	1	
19	R187-0	3256-25, 7-0032	Washer - Flat 7/16 SAE	0	
20	R3296-48	119-4039, 32146-7, 3296-34, 3296-48	Locknut - 7/16-14 ESNA	1	
22	R84-2453	84-2453	Chain - Straight Link (16)	2	
23	R3234-1	321-11, 3234-1	Bolt - Flanged Serrated Hex HD 3/8-16 x 3/4	1	
23	R151379	33114-060, 42-9510	Bolt - Hx HD 8-1.25 x 65mm	1	
23	R400120	01-150-0990, 01-178-0416, 02-150-0990, 321-11, 3222-4, 33114-010, 33114-060, 513327, 908470	Bolt - Hex HD 1/4-20 x 2	1	
23	R3234-34	321-11, 323-12, 3234-34	Bolt - Hex Washer 1/4 x 2	1	
23	R33114-010	33114-010	Bolt - Hex HD M8-1.25 x 10	1	
24	R453022	01-166-0480, 01-166-1220, 21-3880, 217-21, 30-8550, 30-9110, 3256-28, 3256-44, 46-9030, Mar-71	Washer - 3/4 SAE	5	

All original equipment manufacturers names and part numbers are used for identification purposes only, and we are in no way implying that our products are original equipment parts. Prices subject to change without notice.



Replaces Toro Sand Pro 5020 Parts

Attachments

Spring Rake - Model 08813



Item No	R&R Part No.	OEM Part No.	Description	Qty Req	Order Quantity
24	R3256-82	3256-82	Washer - Flat	1	
24	R3256-35	3256-35	Washer - Flat	5	
25	R85-0360	85-0360	Rake-Spring	5	
26	R117-4687	117-4687	Washer - Cupped	5	
27	R104-7201	104-7201	Locknut - 1/4-20 ESNA Flanged	1	
27	R3296-29	1-804256, 3290-357, 3296-29, 915662P	Locknut - 5/16-18 ESNA	5	
27	R32128-43	30-8990, 32128-43, 3290-357	Nut - Flanged Whiz - 3/8-16	5	
27	R32153-3	119-4038, 22-12-AJFD, 32127-35, 32146-5, 32153-3, 3296-18, 3296-29, 3296-31, N/A	Locknut - 5/16-18 ESNA Zinc	5	

All original equipment manufacturers names and part numbers are used for identification purposes only, and we are in no way implying that our products are original equipment parts. Prices subject to change without notice.