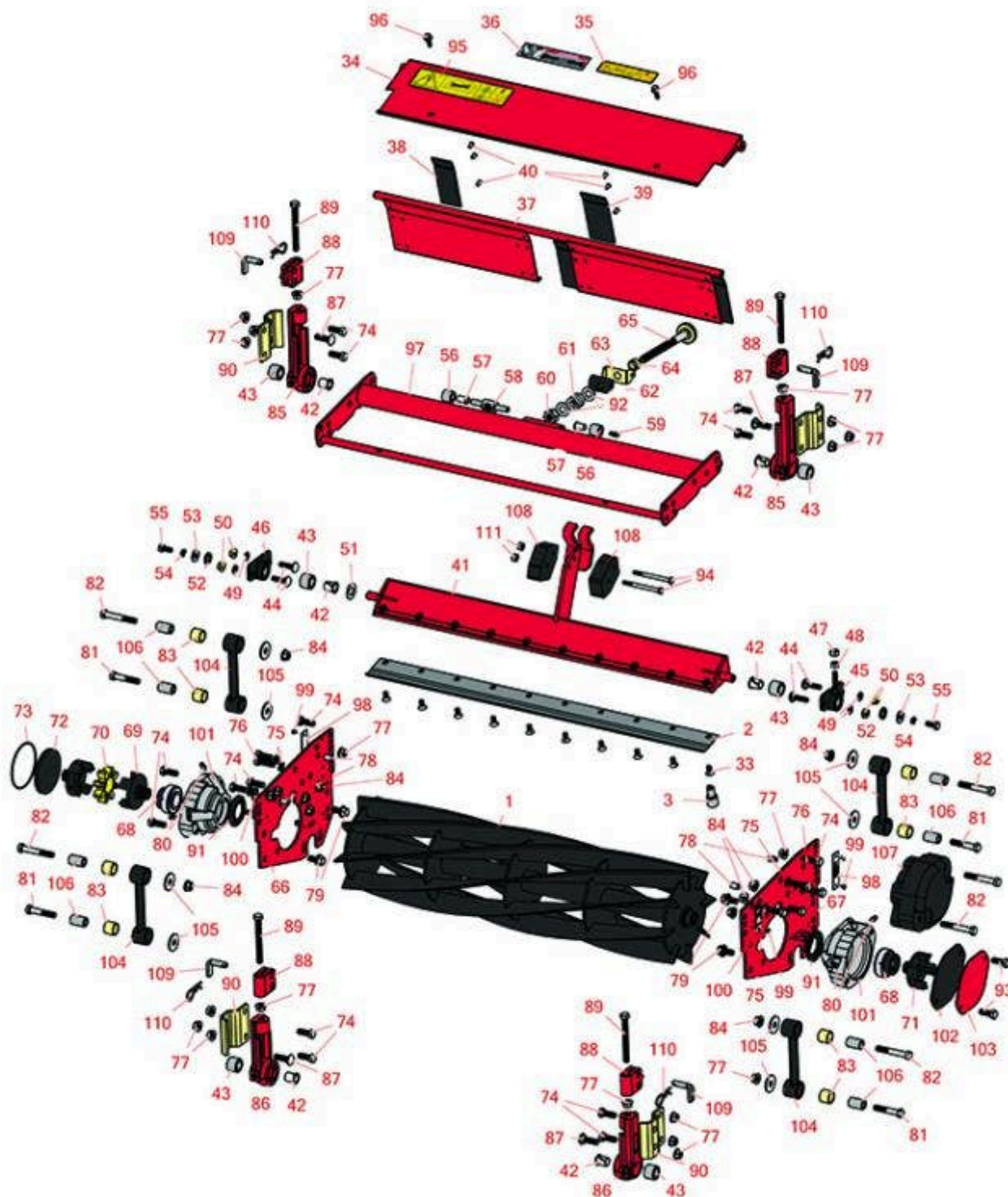




## Replaces Toro Reelmaster 2000D Parts

Cutting Unit - Models 03210, 03212, 03237, 03238 & 03239  
Reel & Bedknife



All original equipment manufacturers names and part numbers are used for identification purposes only, and we are in no way implying that our products are original equipment parts. Prices subject to change without notice.



## Replaces Toro Reelmaster 2000D Parts

Cutting Unit - Models 03210, 03212, 03237, 03238 & 03239  
Reel & Bedknife



Item No	R&R Part No.	OEM Part No.	Description	Qty Req	Order Quantity
---------	--------------	--------------	-------------	---------	----------------

### R&R Reels, Lifetime Guaranteed

1	<b>R94-3631</b>	93-8839, 94-3631, 99-3468, 99-3482	Reel - 5 Blade Fits 27x7	1	
---	-----------------	---	--------------------------	---	--

*Detail Description:* R&R Reel blades are expertly crafted from premium high carbon-boron alloy steel, heat-treated to perfectly complement both R&R and OEM bedknives. Each reel undergoes precision cylindrical grinding on bearing surfaces, followed by relief grinding for optimal performance. Advanced computer balancing ensures extended reel and bearing life. Backed by our lifetime guarantee against defects in materials and craftsmanship under normal use, R&R Reels deliver unmatched durability and cutting precision you can trust.:

1	<b>R94-3630</b>	93-8833, 94-3630, 99-3469, 99-3483	Reel - 8 Blade Fits 27x7	1	
---	-----------------	---	--------------------------	---	--

*Detail Description:* R&R Reel blades are expertly crafted from premium high carbon-boron alloy steel, heat-treated to perfectly complement both R&R and OEM bedknives. Each reel undergoes precision cylindrical grinding on bearing surfaces, followed by relief grinding for optimal performance. Advanced computer balancing ensures extended reel and bearing life. Backed by our lifetime guarantee against defects in materials and craftsmanship under normal use, R&R Reels deliver unmatched durability and cutting precision you can trust.:

1	<b>R105-6768</b>	105-6768	Reel - 11 Blade 27x7	1	
---	------------------	----------	----------------------	---	--

*Detail Description:* R&R Reel blades are manufactured from high carbon-boron alloy steel and then hardened to RC46-49 to match the temper of our bedknives and original equipment bedknives. All R&R Reels are cylindrically ground on bearing surfaces and then relief ground. Reels are then precision computer balanced for extended bearing and reel life. R&R Products Reels are guaranteed against defects in material and workmanship for the life of the reel under normal use.:

1	<b>R94-5055</b>	94-4987, 99-3470, 99-3484	Reel - 5 Blade 32x7	1	
---	-----------------	---------------------------------	---------------------	---	--

*Detail Description:* R&R Reel blades are expertly crafted from premium high carbon-boron alloy steel, heat-treated to perfectly complement both R&R and OEM bedknives. Each reel undergoes precision cylindrical grinding on bearing surfaces, followed by relief grinding for optimal performance. Advanced computer balancing ensures extended reel and bearing life. Backed by our lifetime guarantee against defects in materials and craftsmanship under normal use, R&R Reels deliver unmatched durability and cutting precision you can trust.:

All original equipment manufacturers names and part numbers are used for identification purposes only, and we are in no way implying that our products are original equipment parts. Prices subject to change without notice.



## Replaces Toro Reelmaster 2000D Parts

Cutting Unit - Models 03210, 03212, 03237, 03238 & 03239  
Reel & Bedknife



Item No	R&R Part No.	OEM Part No.	Description	Qty Req	Order Quantity
1	<b>R94-5054</b>	94-4960, 99-3471, 99-3485	Reel - 8 Blade Fits 32x7	1	

*Detail Description: R&R Reel blades are expertly crafted from premium high carbon-boron alloy steel, heat-treated to perfectly complement both R&R and OEM bedknives. Each reel undergoes precision cylindrical grinding on bearing surfaces, followed by relief grinding for optimal performance. Advanced computer balancing ensures extended reel and bearing life. Backed by our lifetime guarantee against defects in materials and craftsmanship under normal use, R&R Reels deliver unmatched durability and cutting precision you can trust.:*

### R&R Bedknives, Lifetime Guaranteed

2	<b>R62-5180</b>	105-6785, 61-0800, 62-5180	Bedknife - Lowcut - 27 in Unit	1	
---	-----------------	----------------------------------	--------------------------------	---	--

*Detail Description: R&R Bedknives are manufactured from high carbon-boron alloy steel and then hardened to RC46-49 to match the temper of our reel blades and original equipment reels. Bedknives are surface ground on the top and front edge and straightened three times before being packaged with oil for rust prevention. All R&R Bedknives now have an increased front edge grind for added life. All R&R Bedknives are guaranteed against defects in material and workmanship under normal use for the life of the part.:*

2	<b>R94-5079</b>	104-1381, 94-4974, 94-5079	Bedknife - Lowcut - 32 in Unit	1	
---	-----------------	----------------------------------	--------------------------------	---	--

*Detail Description: R&R Bedknives are manufactured from high carbon-boron alloy steel and then hardened to RC46-49 to match the temper of our reel blades and original equipment reels. Bedknives are surface ground on the top and front edge and straightened three times before being packaged with oil for rust prevention. All R&R Bedknives now have an increased front edge grind for added life. All R&R Bedknives are guaranteed against defects in material and workmanship under normal use for the life of the part.:*

2	<b>R104-1380</b>	104-1380	Bedknife - Highcut - 27 in Unit	1	
---	------------------	----------	---------------------------------	---	--

*Detail Description: R&R Bedknives are manufactured from high carbon-boron alloy steel and then hardened to RC46-49 to match the temper of our reel blades and original equipment reels. Bedknives are surface ground on the top and front edge and straightened three times before being packaged with oil for rust prevention. All R&R Bedknives now have an increased front edge grind for added life. All R&R Bedknives are guaranteed against defects in material and workmanship under normal use for the life of the part.:*

### R&R Razor Tool Steel Bedknives, Lifetime Guaranteed

All original equipment manufacturers names and part numbers are used for identification purposes only, and we are in no way implying that our products are original equipment parts. Prices subject to change without notice.



## Replaces Toro Reelmaster 2000D Parts

Cutting Unit - Models 03210, 03212, 03237, 03238 & 03239  
Reel & Bedknife



Item No	R&R Part No.	OEM Part No.	Description	Qty Req	Order Quantity
---------	--------------	--------------	-------------	---------	----------------

2	<b>R150469</b>		Bedknife - Razor Tool Steel - 27 x 1/2 Fairway	1	
---	----------------	--	--	---	--

*Detail Description: R&R Razor bedknives are manufactured from premium alloy tool steel steel and then hardened to RC48-51 to match the temper of our Razor reel blades and original equipment premium series reels. Bedknives are surface ground on the top and front edge and specially packaged for rust prevention. All R&R Bedknives now have an increased front edge grind for added life. All R&R Bedknives are guaranteed against defects in material and workmanship under normal use for the life of the part. You can expect up to double the life over standard bedknives.:*

2	<b>R112-8956</b>	112-8956	Bedknife - Razor Tool Steel - 32 x 3/8 Fairway	1	
---	------------------	----------	--	---	--

*Detail Description: R&R Razor bedknives are manufactured from premium alloy tool steel steel and then hardened to RC48-51 to match the temper of our Razor reel blades and original equipment premium series reels. Bedknives are surface ground on the top and front edge and specially packaged for rust prevention. All R&R Bedknives now have an increased front edge grind for added life. All R&R Bedknives are guaranteed against defects in material and workmanship under normal use for the life of the part. You can expect up to double the life over standard bedknives.:*

2	<b>R112-8910</b>	112-8910	Bedknife - Razor Tool Steel - 27 High Cut	1	
---	------------------	----------	---	---	--

*Detail Description: R&R Razor bedknives are manufactured from premium alloy tool steel steel and then hardened to RC48-51 to match the temper of our Razor reel blades and original equipment premium series reels. Bedknives are surface ground on the top and front edge and specially packaged for rust prevention. All R&R Bedknives now have an increased front edge grind for added life. All R&R Bedknives are guaranteed against defects in material and workmanship under normal use for the life of the part. You can expect up to double the life over standard bedknives.:*

### Service Tools

3	<b>R51-0880</b>	51-0880	Bedknife Screw Driver Tool	0	
---	-----------------	---------	----------------------------	---	--

*Detail Description: Easily install and remove bed knife screws with the help of a ratchet with 3/8" drive. Tool manufactured with hardened alloy steel.:*

### Other Parts Available

33	<b>R150476</b>	3-3816, 3-6462, 57-4910	Screw - Bedknife 5/16-18 x 5/8	10	
----	----------------	-------------------------------	--------------------------------	----	--

All original equipment manufacturers names and part numbers are used for identification purposes only, and we are in no way implying that our products are original equipment parts. Prices subject to change without notice.



## Replaces Toro Reelmaster 2000D Parts

Cutting Unit - Models 03210, 03212, 03237, 03238 & 03239  
Reel & Bedknife



Item No	R&R Part No.	OEM Part No.	Description	Qty Req	Order Quantity
34	<b>R94-3621</b>	94-3621	Shield - Top Incl. Safety Decal 27 in	1	
34	<b>R94-5053</b>	94-5053	Shield - Top - Fits 32 in Units	1	
35	<b>R93-6688</b>	93-6688	Decal - Warning	1	
36	<b>R67-7960</b>	27-2890, 62-5070, 67-7960	Decal - Warning	1	
37	<b>R93-8849</b>	61-1130, 93-8817, 93-8849	Shield - Rear Grass Fits 27 in Units	1	
37	<b>R94-4969</b>	94-4969	Shield - Rear Grass 32 in Units	1	
38	<b>R61-3280</b>	61-3280	Cover - Rubber Side	2	
39	<b>R61-3290</b>	61-3290	Cover - Rubber Center	1	
40	<b>R700382</b>	700382	Rivet - Guard	12	
41	<b>R95-8739</b>	95-8739, 95-8739-01	Bed Bar - Fits 27 Units	1	
41	<b>R95-8748</b>	95-8748-01	Bed Bar - Fits 32 Units	1	
42	<b>R56-9520</b>	56-9520	Bushing - Nyliner	6	
43	<b>R56-9510</b>	56-9510	Bushing - Rubber For Bed Bar / RI	6	
44	<b>R3230-2</b>	01-173-0508, 25-25-AGD, 3230-16, 3230-2, 513624, 513633, 513635, 900038P	Bolt - Carriage	4	
45	<b>R16-9769</b>	16-9769	Housing - Bed Bar - Adj. Side	1	

All original equipment manufacturers names and part numbers are used for identification purposes only, and we are in no way implying that our products are original equipment parts. Prices subject to change without notice.



## Replaces Toro Reelmaster 2000D Parts

Cutting Unit - Models 03210, 03212, 03237, 03238 & 03239  
Reel & Bedknife



Item No	R&R Part No.	OEM Part No.	Description	Qty Req	Order Quantity
46	<b>R14-4459</b>	14-4459	Housing - w/Bushing For Bed Bar	1	
47	<b>R444754</b>	01-189-0518, 3296-4	Locknut - 5/16-24 Center	1	
48	<b>R3219-2</b>	01-188-0524, 22-12-BJKD, 3219-2, 915720	Nut - 5/16-24 Zinc	1	
49	<b>R3256-74</b>	3256-74	Washer - Flat	4	
50	<b>R104-8300</b>	104-8300, 104-8300 , 119-4041	Locknut - 5/16-18 Flanged Y/Zinc	4	
51	<b>R61-1950</b>	61-1950	Washer - Nylon - Bed Bar	1	
52	<b>R62-7120</b>	62-7120	Washer	1	
53	<b>R3256-56</b>	3256-56, 60-4750	Washer	1	
54	<b>R3253-4</b>	01-166-0110, 01-166-0510, 23-10-GD, 24-7170, 30-8520, 3253-4, 48-9350, 48-9360, 48-9570, 68-9420, 99-7577	Washer - Lock 5/16 Zinc	1	
55	<b>R322-3</b>	01-150-1420, 01-178-0506, 20-24-AD, 20-24-AGD, 322-3, 48-9270, 513339, 908017P	Bolt - Hex HD 5/16-18 x 3/4	1	

All original equipment manufacturers names and part numbers are used for identification purposes only, and we are in no way implying that our products are original equipment parts. Prices subject to change without notice.





## Replaces Toro Reelmaster 2000D Parts

Cutting Unit - Models 03210, 03212, 03237, 03238 & 03239  
Reel & Bedknife



Item No	R&R Part No.	OEM Part No.	Description	Qty Req	Order Quantity
56	<b>R62-5510</b>	52-2870, 62-5510	Bushing	2	
57	<b>R52-2890</b>	52-2890	Bushing - Flanged	2	
58	<b>R57-5260</b>	107-7409, 57-5260	Pivot - 1/2-20 - Bed Bar	1	
59	<b>R302-18</b>	302-18	Zerk - Grease Press Style	1	
60	<b>R3296-62</b>	3296-62	Locknut - 1/2-20 LH Jam	1	
61	<b>R57-5270</b>	57-5270	Spring - Adjusting Handle	1	
62	<b>R93-2892</b>	93-2892	Pivot - Plastic - Bed Bar	1	
63	<b>R95-8752</b>	93-9767, 95-8752	Arm - Spring	1	
64	<b>R93-2959</b>	93-2959	Spacer - Bed Bar Assy	1	
65	<b>R95-8877</b>	106-7536, 93-2957, 95-2762, 95-8877	Handle - Bed Bar Adjustment	1	
66	<b>R94-3695-01</b>	94-3695, 94-3695-01	Plate - Side Reel RH	1	
67	<b>R94-3697-01</b>	94-3697, 94-3697-01	Plate - Side Reel LH	1	
68	<b>R100-4926</b>	100-4926	Bearing - Reel Self Aligning	2	
69	<b>R93-8825</b>	93-8825	Coupling - RH Reel	1	
70	<b>R93-8827</b>	93-8827	Spider - Reel Coupling	1	
71	<b>R93-8826</b>	93-8826	Coupling - LH Reel	1	
72	<b>R94-2703</b>	94-2703	Plug - Plastic Spindle Housing	1	

All original equipment manufacturers names and part numbers are used for identification purposes only, and we are in no way implying that our products are original equipment parts. Prices subject to change without notice.



## Replaces Toro Reelmaster 2000D Parts

Cutting Unit - Models 03210, 03212, 03237, 03238 & 03239  
Reel & Bedknife



Item No	R&R Part No.	OEM Part No.	Description	Qty Req	Order Quantity
73	R353-949	353-949, 60-3520	O-Ring	1	
74	R323-6	01-150-0010, 01-178-0608, 20-47-AD, 20-47-AGD, 3224-2, 323-6, 49-3510, 908034P, 908332	Bolt - Hex HD 3/8-16 x 1 GR5 YZ	10	
75	R3254-6	01-166-0010, 01-166-0280, 01-166-0610, 3253-5, 3254-18, 3254-6, 3290-223, 48-9370	Washer - Lock 3/8	4	
76	R400264	01-150-0180, 01-178-0610, 20-48-AD, 20-48-AGD, 32-9160, 3224-3, 323-29, 323-7, 400264, 908035P	Bolt - Hex HD 3/8-16 x 1-1/4	2	
77	R3296-39	32127-25, 32128-36, 3290-357, 3296-17, 3296-22, 3296-39, 915663P, 99-7443	Locknut - 3/8-16 Nylon	6	
78	R32121-36	32121-36	Pin-Spring	4	
79	R110-1718	110-1718	Screw-HHF	4	

All original equipment manufacturers names and part numbers are used for identification purposes only, and we are in no way implying that our products are original equipment parts. Prices subject to change without notice.





## Replaces Toro Reelmaster 2000D Parts

Cutting Unit - Models 03210, 03212, 03237, 03238 & 03239  
Reel & Bedknife



Item No	R&R Part No.	OEM Part No.	Description	Qty Req	Order Quantity
80	R302-5	21-6010, 302-11, 302-37, 302-47, 302-5, 302-57, 302-58, 302-6, 31-0300, 32-9660, 60-0800, 62-3880, 92-4181	Fitting - Grease	4	
81	R323-10	01-150-0680, 01-178-0616, 100-6663, 100-8320, 1489, 20-51-AD, 20-51-AGD, 3224-6, 323-10, 323-35, 908336	Bolt - Hex HD 3/8-16 x 2	4	
82	R101526	01-150-0970, 01-178-0620, 20-53-AGD, 321-11, 3224-8, 323-11, 323-12, 323-31, 323-4, 323-47	Bolt - Hex HD 3/8-16 x 2-1/2 GR5	6	
83	R94-8945	94-8945	Bushing - Bronze - Link Bar	4	
84	R32128-19	104-8301, 104-9301, 32128-19	Locknut - 3/8-16 Flanged Top Lock	8	
85	R14-4479	14-4479	Bracket - Assy - Rear Roller	2	

All original equipment manufacturers names and part numbers are used for identification purposes only, and we are in no way implying that our products are original equipment parts. Prices subject to change without notice.



## Replaces Toro Reelmaster 2000D Parts

Cutting Unit - Models 03210, 03212, 03237, 03238 & 03239  
Reel & Bedknife



Item No	R&R Part No.	OEM Part No.	Description	Qty Req	Order Quantity
86	<b>R14-4489</b>	14-4489	Bracket - Assy - Front Roller	2	
87	<b>R3231-25</b>	01-173-0610, 30-9970, 3231-25, 3231-3, 900064P	Bolt - Carriage 3/8-16 x 1-1/4	4	
88	<b>R61-0420</b>	61-0420, 61-0420-01	Support - HOC	4	
89	<b>R61-0790</b>	323-57, 61-0790	Bolt - Roller Adjustment	4	
90	<b>R61-0910</b>	61-0910	Bracket	4	
91	<b>R105-6761</b>	105-6761	Seal	2	
92	<b>R29-8910-01</b>	29-8910	Washer - Flat 1/2	2	
93	<b>R323-2</b>	01-178-0604, 323-2	Bolt - Hex HD 3/8-16 x 1	2	
94	<b>R400124</b>	01-178-0420, 20-11-AD, 321-15	Bolt - Hex HD 1/4-20 x 2-1/2 GR5	2	
95	<b>R93-8064</b>	93-8064	Decal - Warning	1	
96	<b>R32144-10</b>	32140-81, 32144-10, 32144-3, 34-140-AMVD	Bolt - 1/4-20 x 3/4 Serrated Hx Wshr	2	
97	<b>R95-8753-01</b>	95-8753, 95-8753-01	Reel Frame - 27 in	1	
97	<b>R95-8755-01</b>	95-8755, 95-8755-01	Reel Frame - 32 in	1	
98	<b>R61-3800</b>	61-3800	Plate - HOC Rear	2	
99	<b>R3290-55</b>	3290-55	Rivet - 5/32 x 3/8 Pop Rivet	4	

All original equipment manufacturers names and part numbers are used for identification purposes only, and we are in no way implying that our products are original equipment parts. Prices subject to change without notice.



## Replaces Toro Reelmaster 2000D Parts

Cutting Unit - Models 03210, 03212, 03237, 03238 & 03239  
Reel & Bedknife



Item No	R&R Part No.	OEM Part No.	Description	Qty Req	Order Quantity
100	<b>R61-3790</b>	61-3790	Plate-HOC, Front	2	
101	<b>R99-3404</b>	93-6930, 99-3404	Housing-Bearing	2	
102	<b>R94-5979</b>	94-5979	Gasket	1	
103	<b>R93-6960</b>	93-6960	Cover - Bearing Holder	1	
104	<b>R16-9759</b>	16-9759	Link Assy	4	
105	<b>R93-8806</b>	93-8806	Washer-Hardened	16	
106	<b>R93-6981</b>	93-6981	Spacer	8	
107	<b>R105-0171-03</b>	105-0171-03	Weight-End	1	
108	<b>R99-3472</b>	99-3472	Weight	2	
109	<b>R71-3690</b>	61-0630, 71-3690	Spade - Bent	4	
110	<b>R3290-467</b>	3290-467	Pin-Hair	4	
111	<b>R301504</b>	2296-42, 301504, 32127-24, 32128-33, 32146-17, 3296-16, 3296-42, 3296-42 , 915661P	Locknut - ESNA 1/4-20	2	

All original equipment manufacturers names and part numbers are used for identification purposes only, and we are in no way implying that our products are original equipment parts. Prices subject to change without notice.