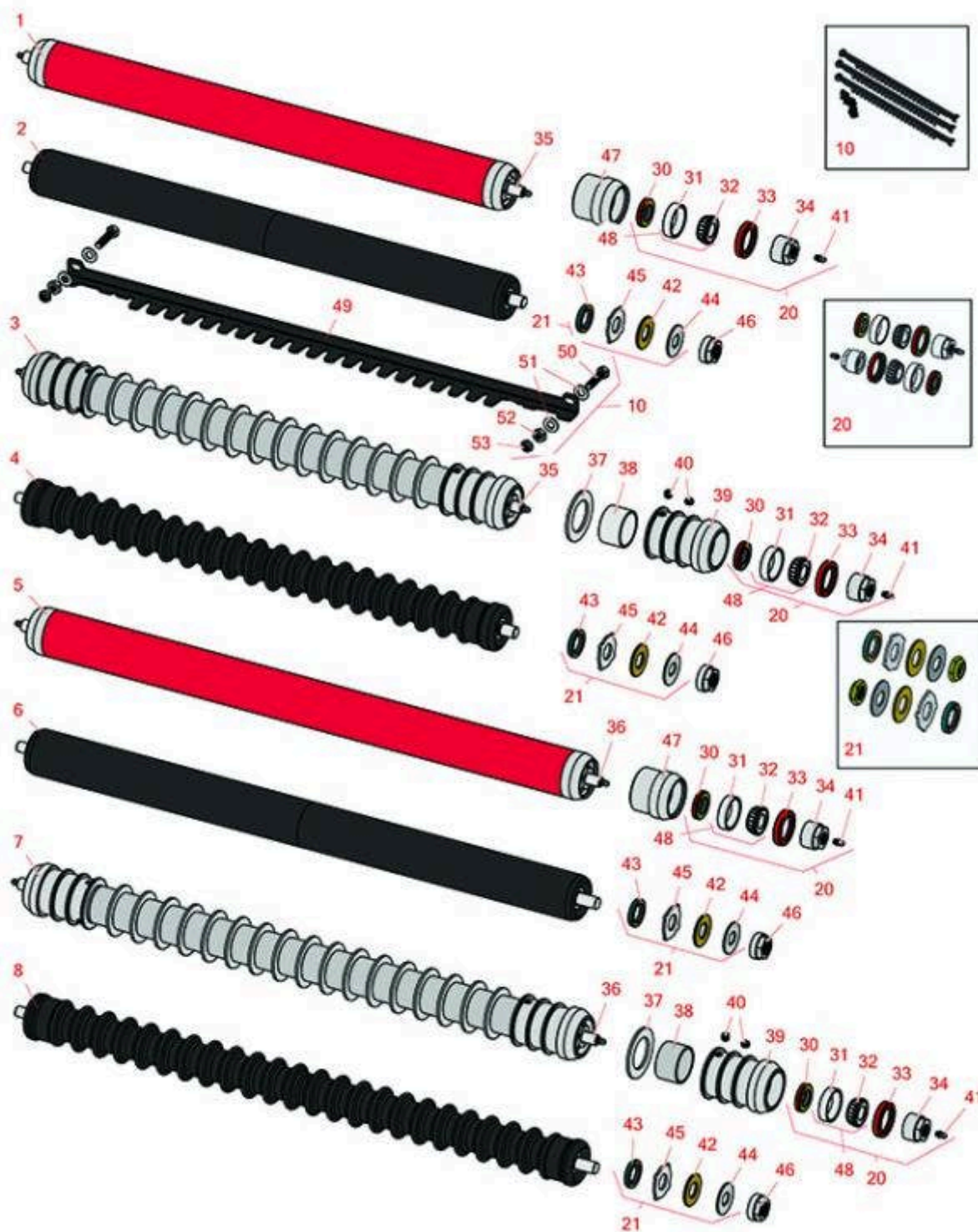




Replaces Toro Reelmaster 2000D Parts

Cutting Unit - Models 03210, 03212, 03237, 03238 & 03239
Rollers



All original equipment manufacturers names and part numbers are used for identification purposes only, and we are in no way implying that our products are original equipment parts. Prices subject to change without notice.



Replaces Toro Reelmaster 2000D Parts

Cutting Unit - Models 03210, 03212, 03237, 03238 & 03239
Rollers



Item No	R&R Part No.	OEM Part No.	Description	Qty Req	Order Quantity
---------	--------------	--------------	-------------	---------	----------------

R&R Rollers to fit 27" Units

1	R61-0410	61-0410	Roller - Smooth Tubular Steel	1	
---	-----------------	---------	-------------------------------	---	--

Detail Description: Constructed with a through shaft, this heavy duty roller uses greasable tapered bearings for extended life.:

2	R1503770		Roller - Smooth UHMW Polyethylene	1	
---	-----------------	--	-----------------------------------	---	--

Detail Description: Machined from solid UHMW, this low maintenance roller uses a 1" solid stainless steel shaft and requires no grease. UHMW material prevents build-up of debris.:

3	R63-5160	63-5160, 92-1846	Roller - Grooved Repairable Steel	1	
---	-----------------	---------------------	-----------------------------------	---	--

Detail Description: Constructed with a through shaft and greasable tapered bearings for extended life. This roller can be repaired by unscrewing the ends and replacing the series of washers and spacers.:

4	R1503780		Roller - Grooved UHMW Polyethylene	1	
---	-----------------	--	------------------------------------	---	--

Detail Description: Machined from solid UHMW, this low maintenance roller rotates around a 1" solid stainless steel shaft and requires no bearings or grease. Patented groove design and smooth UHMW material prevents build-up of debris.:

R&R Rollers to fit 32" Units

5	R94-4982	94-4982	Roller - Smooth Tubular Steel	1	
---	-----------------	---------	-------------------------------	---	--

Detail Description: Constructed with a through shaft, this heavy duty roller uses greasable tapered bearings for extended life.:

6	R1504401		Roller - Smooth UHMW Polyethylene	1	
---	-----------------	--	-----------------------------------	---	--

Detail Description: Machined from solid UHMW, this low maintenance roller uses a 1" solid stainless steel shaft and requires no grease. UHMW material prevents build-up of debris.:

7	R150720	94-4993	Roller - Grooved Repairable Steel	1	
---	----------------	---------	-----------------------------------	---	--

All original equipment manufacturers names and part numbers are used for identification purposes only, and we are in no way implying that our products are original equipment parts. Prices subject to change without notice.



Replaces Toro Reelmaster 2000D Parts

Cutting Unit - Models 03210, 03212, 03237, 03238 & 03239
Rollers



Item No	R&R Part No.	OEM Part No.	Description	Qty Req	Order Quantity
---------	--------------	--------------	-------------	---------	----------------

Detail Description: Constructed with a through shaft and greasable tapered bearings for extended life. This roller can be repaired by unscrewing the ends and replacing the series of washers and spacers.:

8	R1504352		Roller - Grooved UHMW Polyethylene	1	
---	----------	--	------------------------------------	---	--

Detail Description: Machined from solid UHMW, this low maintenance roller rotates around a 1" solid stainless steel shaft and requires no bearings or grease. Patented groove design and smooth UHMW material prevents build-up of debris.:

Overhaul Kits

10	R104-1398	104-1398	Scraper Kit (Set of 3 w/Hardware)	1	
20	R106-9607	106-9607	Overhaul Kit - Roller	0	

Detail Description: Includes 2 ea: R253-146 Seals, R253-152 Seals, R254-78 Bearings, R254-79 Bearing Cups, R302-5 Zerks & R71-3590 Nuts:

21	R101399		Overhaul Kit - UHMW 2 Pc Roller	1	
----	---------	--	---------------------------------	---	--

Detail Description: Fits all R&R 2-1/2" - 3-1/2" Dia. Black UHMW Plastic Rollers that do not use ball bearings.. Includes 2 ea.: R1503230 Star Washers, R1503470 Seals, R150333 Thrust Washers, R3296-15 Locknuts, R1503471 Bronze Thrust Washers:

Other Parts Available

30	R253-152	253-116, 253-152	Seal - Inner Roller	2	
31	R254-79	01-103-0060, 01-103-0130, 1-633584, 252-106, 254-79, 32-7800, 32-9590	Cup - Bearing	2	

Detail Description: Use R254-79M installation mandrel to properly install race.:

All original equipment manufacturers names and part numbers are used for identification purposes only, and we are in no way implying that our products are original equipment parts. Prices subject to change without notice.



Replaces Toro Reelmaster 2000D Parts

Cutting Unit - Models 03210, 03212, 03237, 03238 & 03239
Rollers



Item No	R&R Part No.	OEM Part No.	Description	Qty Req	Order Quantity
32	R254-78	01-102-0060, 01-102-0130, 1-633585, 254-78, 32-7790, 32-9580, 93-4813	Tapered Bearing Cone	2	
33	R253-146	105-0150, 253-143, 253-146, 253-153	Seal	2	
34	R71-3590	61-0370, 71-3590	Nut - Adjusting Roller	2	
35	R61-0400	105-0156, 61-0400	Shaft - Roller	1	
36	R94-4983	94-4983	Shaft - Roller	1	
37	R150672		Washer - 2-3/4 Roller	0	
38	R150671		Spacer - 2 3/4 / 3 Rollers 13/16 L	0	
38	R150676		Spacer - 2-3/4 Dia x 1-1/4 L	0	
39	R150689		Roller End - Threaded	2	
40	R150691	150691	Screw - Set Nyloc 3/8-16 x 3/8	4	
41	R302-5	21-6010, 302-11, 302-37, 302-47, 302-5, 302-57, 302-58, 302-6, 31-0300, 32-9660, 60-0800, 62-3880, 92-4181	Fitting - Grease	2	

All original equipment manufacturers names and part numbers are used for identification purposes only, and we are in no way implying that our products are original equipment parts. Prices subject to change without notice.



Replaces Toro Reelmaster 2000D Parts

Cutting Unit - Models 03210, 03212, 03237, 03238 & 03239
Rollers



Item No	R&R Part No.	OEM Part No.	Description	Qty Req	Order Quantity
42	R1503471		Washer - Thrust SAE660 Bronze	2	
43	R1503470		Seal - Inner Wiper	2	
44	R150333		Washer - Flat Keyed Outer SS	2	
45	R1503230		Washer - Thrust Outer Keyed	2	
46	R150368		Nut - Adjusting	2	
47	R61-0380	61-0380	Roller End - Cap Solid	2	
48	R500534	1-633585	Bearing - with Cup	2	
<i>Detail Description: Kit includes: 1 ea R254-78- Bearing Cone & R254-79 Bearing Cone:</i>					
49	R150738	104-1393-03	Scraper - Fits 63-5160 Roller	1	
50	R3290-316	3290-316, 57-3210	Bolt - Hex Tap 3/8-16 x 1-1/2	2	

All original equipment manufacturers names and part numbers are used for identification purposes only, and we are in no way implying that our products are original equipment parts. Prices subject to change without notice.



Replaces Toro Reelmaster 2000D Parts

Cutting Unit - Models 03210, 03212, 03237, 03238 & 03239
Rollers



Item No	R&R Part No.	OEM Part No.	Description	Qty Req	Order Quantity
51	R453011	01-166-0100, 01-166-0120, 01-166-0270, 01-166-0500, 01-166-0600, 01-166-0620, 132-4593, 2356-3, 237-12, 24-10-AD, 24-11-AD, 24-11-BD, 24-12-AD, 24-12-BD, 30-9310, 32-8190, 3256-24, 3256-3, 3256-36, 3256-4, 453011, 47-9950, 48-9220, 513458, 7-0052	Washer - Flat 3/8 SAE Y/Zinc	4	
52	R3296-59	3296-59	Locknut - 3/8-16 Nylon Jam	2	
53	R3218-3	01-191-0616, 22-13-AJKD, 3218-3, 915236P	Nut - 3/8-16 Jam	2	

All original equipment manufacturers names and part numbers are used for identification purposes only, and we are in no way implying that our products are original equipment parts. Prices subject to change without notice.