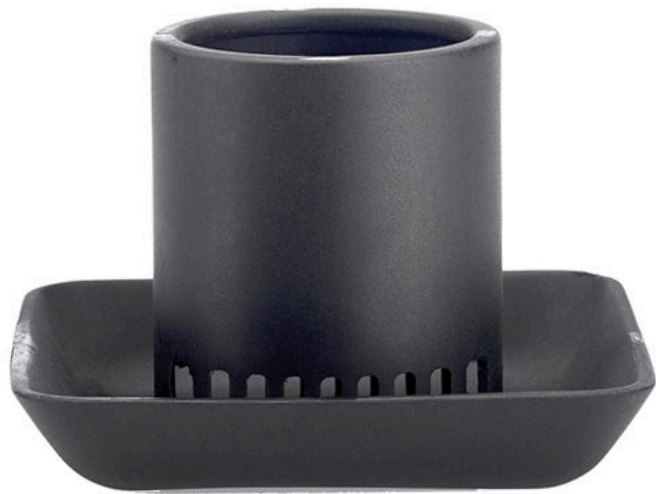




Underhill Gulp Pro Mudguard - For Pumps Post 2020 RG7119



Details

The MudGuard slides on the end of a Gulp Pro with 36" or 72" hose to prevent the pump from clogging in muddy conditions. This easy to attach and remove guard features a built-in filter to minimize mud and debris from burring into the pump.

- Fits Gulp Pro Water Removal Suction Pumps
- Built-in Filter Minimizes Clogging and Makes Pumping Easier
- A "Must Have" Accessory for Dirty Water Use
- Omni-Directional
- Easy On and Off for Cleaning Out Debris

Specifications

Manufacturer	Underhill
Color	Black

GERT KAUFMANN Golf Course Management

Graf-Buttler-Strasse 7 Haimhausen, 85778
+498133907773

<https://golfkauf.rrproducts.com/>