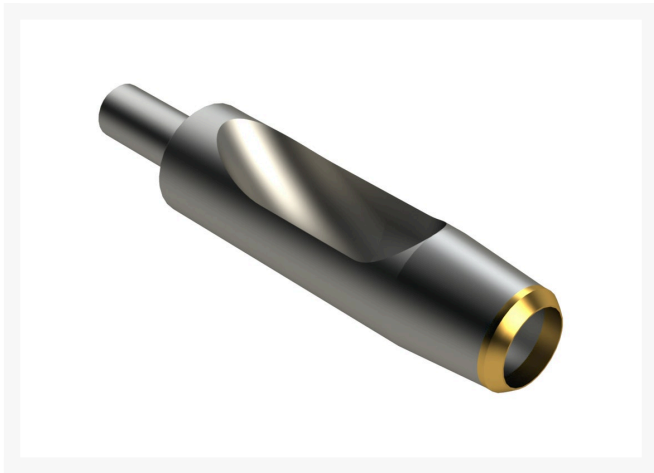




Alloy Machined Side-Eject Tine with Carbide Tip - .375MT x 3.500L x .645OD

R201669



Details

Manufactured from special high-carbon alloy tubular steel with a precision machined slot in the side wall to allow for more efficient core removal in heavy soils. R&R's unique method of machining maintains the maximum side wall height for strength to avoid bending. These tines are through hardened to RC45-48 to create a much tougher and more wear-resistant tine. A carbide tip is then added for even longer life. The advantage of using carbide-tipped tines is the ability to maintain your maximum aerating depth consistently over the life of the tines.

Specifications

Manufacturer	R&R Products
A - Tine Type	Alloy Machined Side-Eject with Carbide Tip
B - Tine Mounting Dia.	.375 in (9.5mm)
C - Tine Length	3.5 in (89mm)
Carbide Tip	Carbide Tip
D - Tine Tip Outside (Hole) Dia.	.645 in (16.4mm)
E - Tine Tip Inside (Core) Dia.	.500 in (12.7mm)
F - Tine Wall Thickness	.062 in (1.6mm)

Fits Models

John Deere Aercore 1000
John Deere Aercore 1500
John Deere Aercore 2000
John Deere Aercore 800
Toro Greens Aerator
Toro ProCore 1298

GERT KAUFMANN Golf Course Management

Graf-Buttler-Strasse 7 Haimhausen, 85778
+498133907773

<https://golfkauf.rrproducts.com/>



**Alloy Machined Side-Eject Tine with
Carbide Tip - .375MT x 3.500L x .645OD**
R201669



Toro ProCore 440
Toro ProCore 648
Toro ProCore 660
Toro ProCore 864
Toro ProCore 880
Toro ProCore 648s