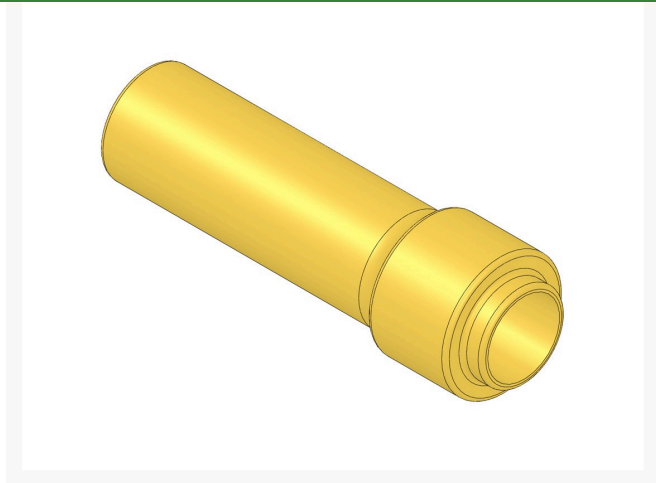




## Mandrel - Seal

R253-146M



### Details

Designed specifically for turf equipment, R&R Mandrels allow proper installation of races, seals, bushings and bearings. Tools are constructed of solid steel and precision machined for exact fit.

### Specifications

Manufacturer

R&R Products

**GERT KAUFMANN Golf Course Management**

Graf-Buttler-Strasse 7 Haimhausen, 85778

+498133907773

<https://golfkauf.rrproducts.com/>