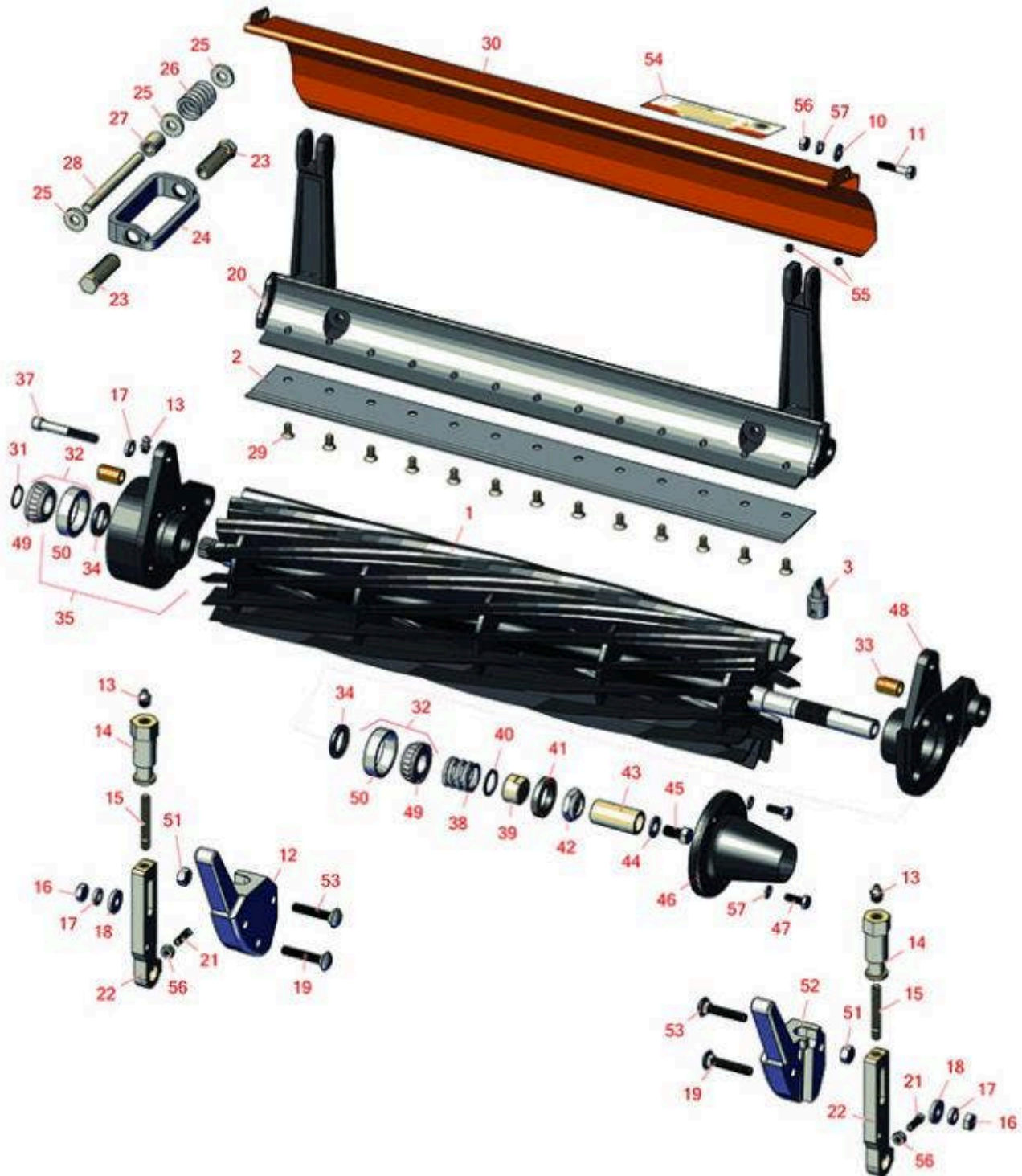




Replaces Jacobsen Eclipse 122 Parts

Cutting Unit
Reel & Bedknife



All original equipment manufacturers names and part numbers are used for identification purposes only, and we are in no way implying that our products are original equipment parts. Prices subject to change without notice.



Replaces Jacobsen Eclipse 122 Parts

Cutting Unit
Reel & Bedknife



Item R&R
No Part No.

OEM
Part No.

Description

Qty
Req

Order
Quantity

R&R Reels, Lifetime Guaranteed

Item No	R&R Part No.	OEM Part No.	Description	Qty Req	Order Quantity
1	R4172945	4104640	Reel - 11 Blade	1	

Detail Description: R&R Reel blades are expertly crafted from premium high carbon-boron alloy steel, heat-treated to perfectly complement both R&R and OEM bedknives. Each reel undergoes precision cylindrical grinding on bearing surfaces, followed by relief grinding for optimal performance. Advanced computer balancing ensures extended reel and bearing life. Backed by our lifetime guarantee against defects in materials and craftsmanship under normal use, R&R Reels deliver unmatched durability and cutting precision you can trust.:

R&R 22" Bedknives, Lifetime Guaranteed

2	R503478	101260, 503028, 503478, 549504	Bedknife - Thin .125-.219 HOC	1	
---	---------	---	-------------------------------	---	--

Detail Description: R&R Bedknives are manufactured from high carbon-boron alloy steel and then hardened to RC46-49 to match the temper of our reel blades and original equipment reels. Bedknives are surface ground on the top and front edge and straightened three times before being packaged with oil for rust prevention. All R&R Bedknives now have an increased front edge grind for added life. All R&R Bedknives are guaranteed against defects in material and workmanship under normal use for the life of the part.:

2	R503477	101261, 503027, 503477, 549397	Bedknife - Thick .156-.438 HOC	1	
---	---------	---	--------------------------------	---	--

Detail Description: R&R Bedknives are manufactured from high carbon-boron alloy steel and then hardened to RC46-49 to match the temper of our reel blades and original equipment reels. Bedknives are surface ground on the top and front edge and straightened three times before being packaged with oil for rust prevention. All R&R Bedknives now have an increased front edge grind for added life. All R&R Bedknives are guaranteed against defects in material and workmanship under normal use for the life of the part.:

R&R 22" Razor Tool Steel Bedknives, Lifetime Guaranteed

2	R101520		Bedknife - Razor Tool Steel - 22 Micro Cut	1	
---	---------	--	---	---	--

All original equipment manufacturers names and part numbers are used for identification purposes only, and we are in no way implying that our products are original equipment parts. Prices subject to change without notice.



Replaces Jacobsen Eclipse 122 Parts

Cutting Unit
Reel & Bedknife



Item No	R&R Part No.	OEM Part No.	Description	Qty Req	Order Quantity
---------	--------------	--------------	-------------	---------	----------------

Detail Description: R&R Razor bedknives are manufactured from premium alloy tool steel steel and then hardened to RC48-51 to match the temper of our Razor reel blades and original equipment premium series reels. Bedknives are surface ground on the top and front edge and specially packaged for rust prevention. All R&R Bedknives now have an increased front edge grind for added life. All R&R Bedknives are guaranteed against defects in material and workmanship under normal use for the life of the part. You can expect up to double the life over standard bedknives.:

2	R101521		Bedknife - Razor Tool Steel - 22 Tournament Cut	1	
---	----------------	--	--	---	--

Detail Description: R&R Razor bedknives are manufactured from premium alloy tool steel steel and then hardened to RC48-51 to match the temper of our Razor reel blades and original equipment premium series reels. Bedknives are surface ground on the top and front edge and specially packaged for rust prevention. All R&R Bedknives now have an increased front edge grind for added life. All R&R Bedknives are guaranteed against defects in material and workmanship under normal use for the life of the part. You can expect up to double the life over standard bedknives.:

Service Tools

3	R101272T		Bedknife Screw Driver Tool	0	
---	-----------------	--	----------------------------	---	--

Tech Note: Easily install and remove bed knife screws with the help of a ratchet. Tool manufactured with hardened alloy steel.:

Detail Description: Easily install and remove bed knife screws with the help of a ratchet. Tool manufactured with hardened alloy steel.:

Other Parts Available

10	R453023	453023	Washer - Flat 1/4	2	
11	R400112	400112, 400114	Bolt - Hex HD 1/4-20 x 1-1/4	2	
12	R241827	241827, 446136	Bracket - LH Grass Catcher	1	
13	R302-5	302-5, 471214, 471223, 471226	Fitting - Grease	2	

All original equipment manufacturers names and part numbers are used for identification purposes only, and we are in no way implying that our products are original equipment parts. Prices subject to change without notice.



Replaces Jacobsen Eclipse 122 Parts

Cutting Unit
Reel & Bedknife



Item No	R&R Part No.	OEM Part No.	Description	Qty Req	Order Quantity
14	R365009	3005692, 365009, 365170, 441674	Knob - Adjusting Roller	2	
15	R343616	343616, 443102	Stud	2	
16	R443106	443106	Nut - 5/16-18 Y/Zinc Plated	2	
17	R446136	446134, 446136	Washer - Lock 5/16 Zinc	2	
18	R364441	364441, 366641	Washer - Flat 5/16x7/8	2	
19	R441674	441674	Screw - 5/16-18 x 1-3/4 Carriage	2	
20	R5000457	5000457	Bed Bar - 22 in	1	
21	R352737	352737	Screw - Set 1/4 x 7/8 Sq Head	2	
22	R2000072	2000072, 471219	Bracket - Roller	2	
23	R366726	366726	Bolt - Special - Bed Knife Adj.	4	
24	R3001600	3001600, 412017	Block - Bedknife Adjusting	2	
25	R366653	366653	Spacer	6	
26	R366709	366709	Spring	2	
27	R367512	367512	Spacer - Bedknife Adj	2	
28	R366727	352437, 366727	Rod - Bedknife Block	2	
29	R101272	101272, 3009138, 402578, 800813	Screw - Bedknife 1/4-20 x 1/2	13	
30	R4139660	4139660	Grass Shield - 22 in	1	

All original equipment manufacturers names and part numbers are used for identification purposes only, and we are in no way implying that our products are original equipment parts. Prices subject to change without notice.



Replaces Jacobsen Eclipse 122 Parts

Cutting Unit
Reel & Bedknife



Item No	R&R Part No.	OEM Part No.	Description	Qty Req	Order Quantity
30	R5003183	5003183	Grass Shield - 22 in	1	
31	R458013	458013	Ring - Retaining	1	
32	R500534	500534, R500534	Bearing - with Cup	1	
<i>Detail Description: Kit includes: 1 ea R254-78- Bearing Cone & R254-79 Bearing Cone:</i>					
33	R545940	2500759, 545940	Bushing	1	
34	R366650	366650	Seal	1	
35	R1000447	1000447	Bearing Housing - RH	1	
<i>Detail Description: Includes R545940, R366650, R254-79 & R302-5:</i>					
37	R4105360	4105360	Bolt - Soc HD Cap 5/16-18 x 2-1/4	3	
38	R363047	348846, 363047	Spring - Reel	1	
39	R364900	364900	Nut - Reel Tension	1	
40	R304745	304745	Washer - Reel	1	
41	R364170	364170, 366648	Seal	1	
42	R3296-15	3296-15, 367029, 444742	Locknut - 3/4-16 Nylon Jam	1	
43	R367164	367164	Spacer - Reel	1	
44	R453011	453011	Washer - Flat 3/8 SAE Y/Zinc	1	
45	R400294	400294	Screw - 3/8 24 x 3/4 Hex C/Zinc	1	
46	R338675	338675, 557775	Cover - Shaft End	1	
47	R321-4	321-4, 400108	Bolt - Hex HD 1/4-20 x 3/4	2	

All original equipment manufacturers names and part numbers are used for identification purposes only, and we are in no way implying that our products are original equipment parts. Prices subject to change without notice.



Replaces Jacobsen Eclipse 122 Parts

Cutting Unit
Reel & Bedknife



Item No	R&R Part No.	OEM Part No.	Description	Qty Req	Order Quantity
48	R1000446	1000446	Bearing Housing - LH	1	
49	R254-78	254-78, 385174, 4121174, 4135152	Tapered Bearing Cone	1	
50	R254-79	254-79, 4121175	Cup - Bearing	1	
<i>Detail Description: Use R254-79M installation mandrel to properly install race.:</i>					
51	R444718	444718	Nut - 5/16-18 Center Lock YZ	4	
52	R241828	241828, 453023	Bracket - RH Grass Catcher	1	
53	R441677	441677	Bolt - Carriage 5/16-18 x 1-1/2	4	
54	R354083	354083, 361877, 4127335	Decal - Danger	2	
55	R3008974	3008974	Rubber Bumper	4	
56	R443102	443102	Nut - 1/4-20 Yellow Zinc	4	
57	R3253-3	3253-3, 446128, 446130	Washer - Lock 1/4	2	

All original equipment manufacturers names and part numbers are used for identification purposes only, and we are in no way implying that our products are original equipment parts. Prices subject to change without notice.