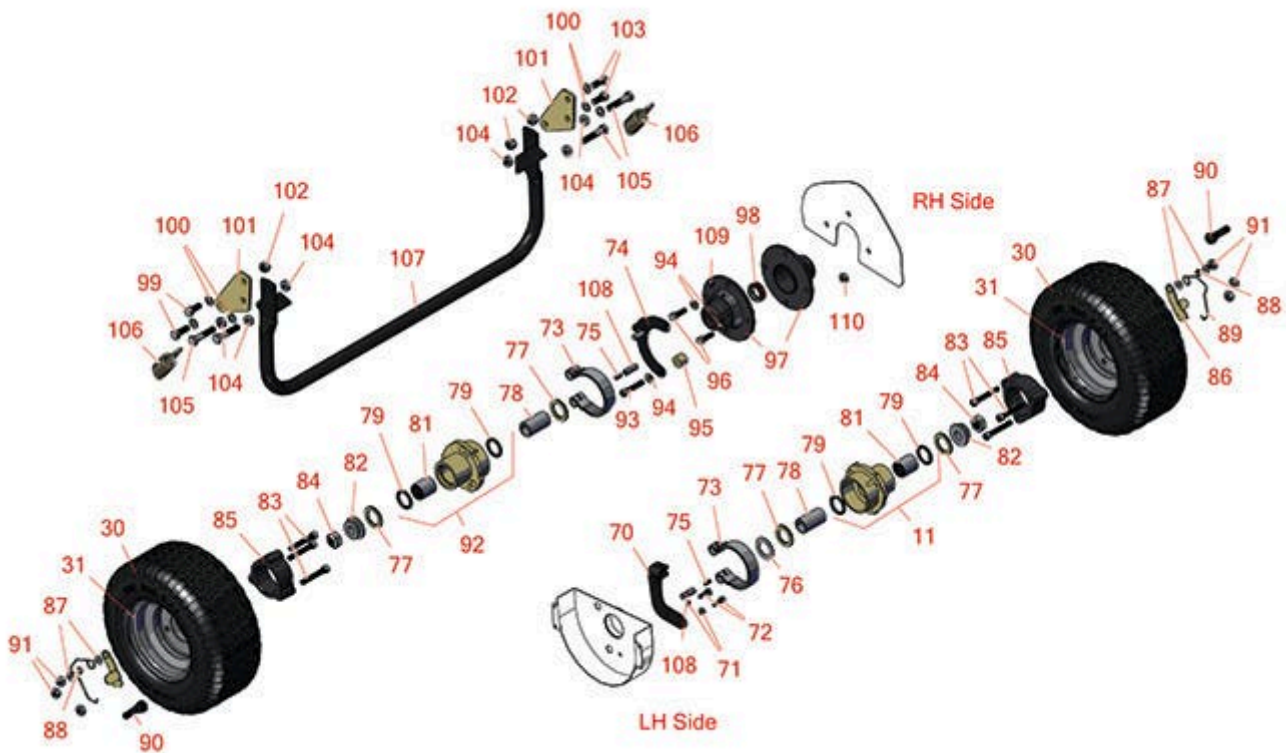




Replaces Jacobsen Eclipse 118F Parts

*Traction Unit
Kickstand & Wheels*



All original equipment manufacturers names and part numbers are used for identification purposes only, and we are in no way implying that our products are original equipment parts. Prices subject to change without notice.



Replaces Jacobsen Eclipse 118F Parts

Traction Unit
Kickstand & Wheels



Item No	R&R Part No.	OEM Part No.	Description	Qty Req	Order Quantity
---------	--------------	--------------	-------------	---------	----------------

Tires

30	RCT5110101	554847	Tire - 11x4.00-5 Nhs (2 Ply) Carlisle Turf Saver	2	
----	-------------------	--------	--	---	--

Detail Description: With its classic square shouldered design, the Turf Saver tire is the market leader for residential riding lawn mowers worldwide. The flat profile and chevron tread provide excellent traction. Its turf-friendly design and breadth of line make it versatile in both application and fitment.:

31	R5002905	5002905	Wheel Assy - 3x5	2	
----	-----------------	---------	------------------	---	--

Other Parts Available

70	R164063	164063	Bracket - Brake Mounting LH	1	
----	----------------	--------	-----------------------------	---	--

71	R3253-3	3253-3, 446128, 446130	Washer - Lock 1/4	2	
----	----------------	------------------------------	-------------------	---	--

72	R321-4	321-4, 400108	Bolt - Hex HD 1/4-20 x 3/4	2	
----	---------------	------------------	----------------------------	---	--

73	R164056	164056	Band - Brake	2	
----	----------------	--------	--------------	---	--

74	R132663	132663	Bracket - Brake Mounting RH	1	
----	----------------	--------	-----------------------------	---	--

75	R415513	415513	Screw - Set 1/4-20 x 1/2 Cup Pt	2	
----	----------------	--------	---------------------------------	---	--

76	R361451	361451	Flat Washer 1 x 1-1/2 Hardened Thrust	1	
----	----------------	--------	---------------------------------------	---	--

77	R366697	366697	Spacer - Bronze Thrust	4	
----	----------------	--------	------------------------	---	--

78	R366717	366717	Clutch Sleeve - Wheel	2	
----	----------------	--------	-----------------------	---	--

79	R366705	366705	Seal - Grease	4	
----	----------------	--------	---------------	---	--

80	R1000477	1000477	Hub Assy - LH	1	
----	-----------------	---------	---------------	---	--

Detail Description: Includes R338766 & R366705:

81	R338766	338766	Bearing - Clutch Differential Shaft	2	
----	----------------	--------	-------------------------------------	---	--

All original equipment manufacturers names and part numbers are used for identification purposes only, and we are in no way implying that our products are original equipment parts. Prices subject to change without notice.



Replaces Jacobsen Eclipse 118F Parts

Traction Unit
Kickstand & Wheels



Item No	R&R Part No.	OEM Part No.	Description	Qty Req	Order Quantity
82	R366718	366716, 366718	Latching Collar - Wheel	2	
83	R434049	434049	Bolt - Soc HD Cap 5/16-18 x 2	6	
84	R3296-33	444820, 445718, 445801	Locknut - 5/8-18 ESNA Jam	2	
85	R271920	271920	Spacer - Wheel	2	
86	R366719	366719	Latch - Wheel	2	
87	R310266	310266, 452004, 452006, 452008	Washer - Flat 5/16 USS	4	
88	R366716	366716	Spacer - Wheel	2	
89	R366704	366704	Spring - Wheel Lock	2	
90	R232-27	232-27, 360111	Stem - Valve w/ Cap	2	
91	R444718	444718	Nut - 5/16-18 Center Lock YZ	6	
92	R1000476	1000476	Hub Assy - RH	1	
<i>Detail Description: Includes R338766 & R366705:</i>					
93	R434032	434032	Screw - Soc HD 5/16-18 x 1-3/4	1	
94	R446136	446134, 446136	Washer - Lock 5/16 Zinc	5	
95	R366737	366737	Spacer - Wheel	1	
96	R322-5	400188	Bolt - Hex HD 5/16-18 x 1	4	
97	R132658	132658	Housing - Parking Brake	1	
98	R337678	337678, 365753	Seal - Clutch Shaft Bearing	1	

All original equipment manufacturers names and part numbers are used for identification purposes only, and we are in no way implying that our products are original equipment parts. Prices subject to change without notice.



Replaces Jacobsen Eclipse 118F Parts

*Traction Unit
Kickstand & Wheels*



Item No	R&R Part No.	OEM Part No.	Description	Qty Req	Order Quantity
99	RF3205	400188, 400262	Bolt - Hex HD 3/8-16 x 1	2	
100	R3254-6	3254-6, 446140, 446142	Washer - Lock 3/8	6	
101	R366796	366796	Bracket - Kickstand	2	
102	R444850	444850	Nut - 3/8-16 Jam Center Lock	4	
103	R400260	400260	Bolt - Hex HD 3/8-16 x 7/8	2	
104	R3218-3	443810	Nut - 3/8-16 Jam	4	
105	R400268	400268	Bolt - Hex HD 3/8-16 x 1-3/4	2	
106	R364164	364164	Spring	2	
107	R132674	132674	Kickstand - 22 in	1	
108	R366742	366742	Pivot Pin w/Set Screw - Brake Band	2	
109	R302-5	302-5, 471214, 471223, 471226	Fitting - Grease	1	
110	R443106	443106	Nut - 5/16-18 Y/Zinc Plated	4	

All original equipment manufacturers names and part numbers are used for identification purposes only, and we are in no way implying that our products are original equipment parts. Prices subject to change without notice.