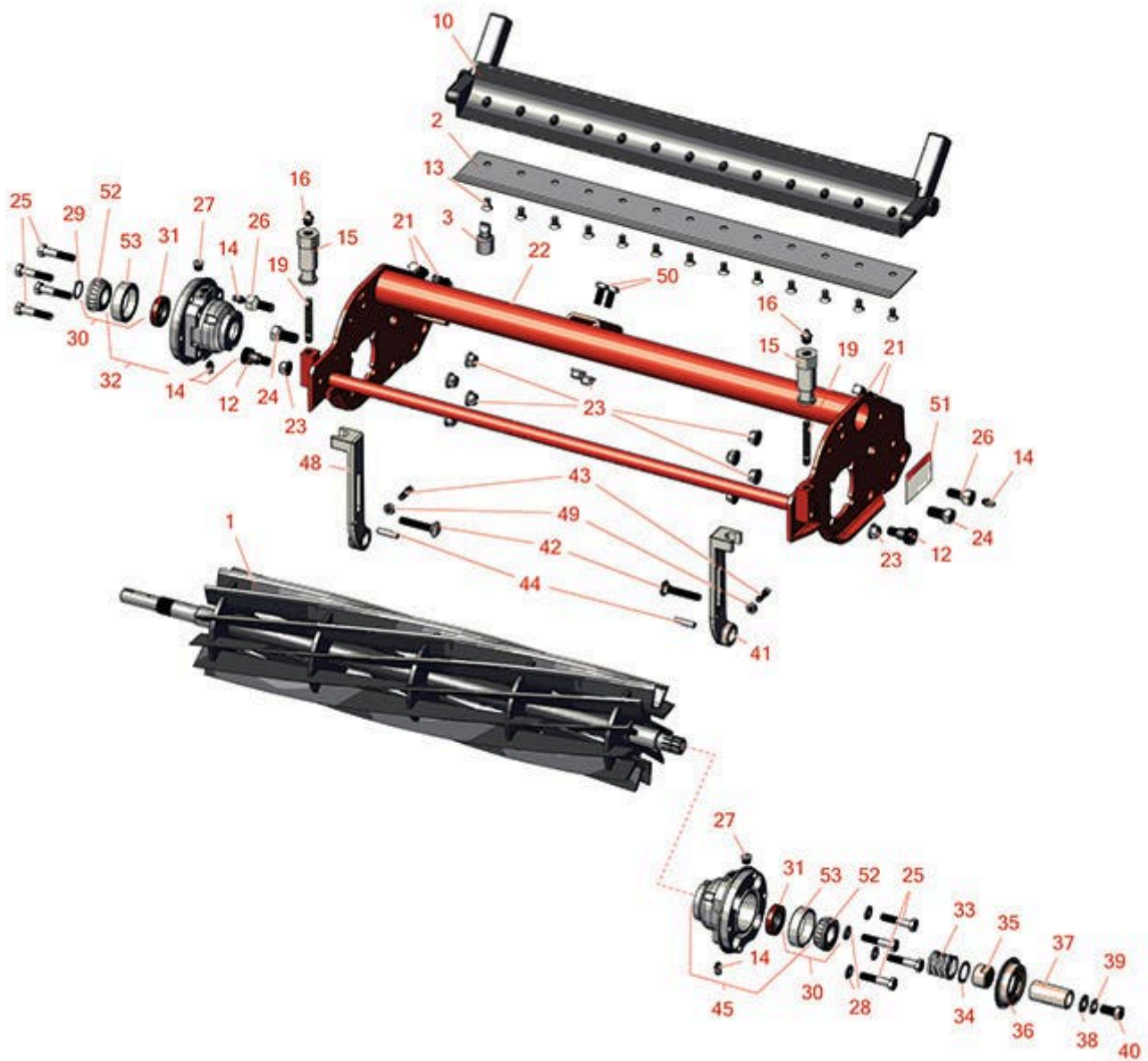




Replaces Jacobsen Eclipse 122F Parts

*Floating Head Cutting Unit
Reel & Bedknife*



All original equipment manufacturers names and part numbers are used for identification purposes only, and we are in no way implying that our products are original equipment parts. Prices subject to change without notice.



Replaces Jacobsen Eclipse 122F Parts

Floating Head Cutting Unit
Reel & Bedknife



Item No	R&R Part No.	OEM Part No.	Description	Qty Req	Order Quantity
---------	--------------	--------------	-------------	---------	----------------

R&R Reels, Lifetime Guaranteed

1	R506636	5000028, 5001101, 506636	Reel - 11 Blade LH	1	
---	----------------	--------------------------------	--------------------	---	--

Detail Description: R&R Reel blades are expertly crafted from premium high carbon-boron alloy steel, heat-treated to perfectly complement both R&R and OEM bedknives. Each reel undergoes precision cylindrical grinding on bearing surfaces, followed by relief grinding for optimal performance. Advanced computer balancing ensures extended reel and bearing life. Backed by our lifetime guarantee against defects in materials and craftsmanship under normal use, R&R Reels deliver unmatched durability and cutting precision you can trust.:

1	R101357		Reel - 14 Blade	1	
---	----------------	--	-----------------	---	--

Detail Description: R&R Reel blades are manufactured from high carbon-boron alloy steel and then hardened to RC46-49 to match the temper of our bedknives and original equipment bedknives. All R&R Reels are cylindrically ground on bearing surfaces and then relief ground. Reels are then precision computer balanced for extended bearing and reel life. R&R Products Reels are guaranteed against defects in material and workmanship for the life of the reel under normal use.:

R&R Bedknives, Lifetime Guaranteed

2	R5002887	5002887	Bedknife - Micro Cut - .082-.109	1	
---	-----------------	---------	----------------------------------	---	--

Detail Description: R&R Bedknives are manufactured from high carbon-boron alloy steel and then hardened to RC46-49 to match the temper of our reel blades and original equipment reels. Bedknives are surface ground on the top and front edge and straightened three times before being packaged with oil for rust prevention. All R&R Bedknives now have an increased front edge grind for added life. All R&R Bedknives are guaranteed against defects in material and workmanship under normal use for the life of the part.:

2	R503478	101260, 503028, 503478, 549504	Bedknife - Thin .125-.219 HOC	1	
---	----------------	-----------------------------------------	-------------------------------	---	--

Detail Description: R&R Bedknives are manufactured from high carbon-boron alloy steel and then hardened to RC46-49 to match the temper of our reel blades and original equipment reels. Bedknives are surface ground on the top and front edge and straightened three times before being packaged with oil for rust prevention. All R&R Bedknives now have an increased front edge grind for added life. All R&R Bedknives are guaranteed against defects in material and workmanship under normal use for the life of the part.:

All original equipment manufacturers names and part numbers are used for identification purposes only, and we are in no way implying that our products are original equipment parts. Prices subject to change without notice.



Replaces Jacobsen Eclipse 122F Parts

Floating Head Cutting Unit
Reel & Bedknife



Item No	R&R Part No.	OEM Part No.	Description	Qty Req	Order Quantity
2	R503477	101261, 503027, 503477, 549397	Bedknife - Thick .156-.438 HOC	1	

Detail Description: R&R Bedknives are manufactured from high carbon-boron alloy steel and then hardened to RC46-49 to match the temper of our reel blades and original equipment reels. Bedknives are surface ground on the top and front edge and straightened three times before being packaged with oil for rust prevention. All R&R Bedknives now have an increased front edge grind for added life. All R&R Bedknives are guaranteed against defects in material and workmanship under normal use for the life of the part.:

R&R Razor Tool Steel Bedknives, Lifetime Guaranteed

2	R101520	Bedknife - Razor Tool Steel - 22 Micro Cut	1
---	---------	-----------------------------------------------	---

Detail Description: R&R Razor bedknives are manufactured from premium alloy tool steel steel and then hardened to RC48-51 to match the temper of our Razor reel blades and original equipment premium series reels. Bedknives are surface ground on the top and front edge and specially packaged for rust prevention. All R&R Bedknives now have an increased front edge grind for added life. All R&R Bedknives are guaranteed against defects in material and workmanship under normal use for the life of the part. You can expect up to double the life over standard bedknives.:

2	R101521	Bedknife - Razor Tool Steel - 22 Tournament Cut	1
---	---------	----------------------------------------------------	---

Detail Description: R&R Razor bedknives are manufactured from premium alloy tool steel steel and then hardened to RC48-51 to match the temper of our Razor reel blades and original equipment premium series reels. Bedknives are surface ground on the top and front edge and specially packaged for rust prevention. All R&R Bedknives now have an increased front edge grind for added life. All R&R Bedknives are guaranteed against defects in material and workmanship under normal use for the life of the part. You can expect up to double the life over standard bedknives.:

Service Tools

3	R101272T	Bedknife Screw Driver Tool	0
---	----------	----------------------------	---

Tech Note: Easily install and remove bed knife screws with the help of a ratchet. Tool manufactured with hardened alloy steel.:

Detail Description: Easily install and remove bed knife screws with the help of a ratchet. Tool manufactured with hardened alloy steel.:

All original equipment manufacturers names and part numbers are used for identification purposes only, and we are in no way implying that our products are original equipment parts. Prices subject to change without notice.



Replaces Jacobsen Eclipse 122F Parts

Floating Head Cutting Unit
Reel & Bedknife



Item No	R&R Part No.	OEM Part No.	Description	Qty Req	Order Quantity
---------	--------------	--------------	-------------	---------	----------------

Other Parts Available

10	R220278	121856, 220278, 5000415	Backing Bar - Cast	1	
12	R365246	365246	Bolt - Shoulder w/Nyloc Patch	2	
13	R101272	101272, 3009138, 402578, 800813	Screw - Bedknife 1/4-20 x 1/2	13	
14	R302-5	302-5, 471214, 471223, 471226	Fitting - Grease	1	
15	R365009	3005692, 365009, 365170, 441674	Knob - Adjusting Roller	2	
16	R471219	366852, 471219	Zerk - Grease	2	
19	R343616	343616, 443102	Stud	2	
21	R412506	412503, 412506	Screw - Bed Bar Adjusting	4	
22	R5002577	5002577	Frame - Reel	1	
23	R445795	445795	Nut - 5/16-18 Flanged	8	
24	R315298	315298	Bolt - Bed Bar	2	
25	R400192	400192	Bolt - Hex HD 5/16-18 x 1-1/2	8	
26	R1002224	1002224	Bolt - Rear Roller 3/8-24	2	

Detail Description: Incl Grease Zerk:

All original equipment manufacturers names and part numbers are used for identification purposes only, and we are in no way implying that our products are original equipment parts. Prices subject to change without notice.



Replaces Jacobsen Eclipse 122F Parts

Floating Head Cutting Unit
Reel & Bedknife



Item No	R&R Part No.	OEM Part No.	Description	Qty Req	Order Quantity
27	R170714	170714, 471240, 471242	Fitting - Pressure Relief	1	
28	R453009	3256-23, 452004, 452006, 452008, 453009	Washer - Flat 5/16 SAE	4	
29	R458013	458013	Ring - Retaining	1	
30	R500534	500534, R500534	Bearing - with Cup	1	
<i>Detail Description: Kit includes: 1 ea R254-78- Bearing Cone & R254-79 Bearing Cone:</i>					
31	R336962	336962	Seal	1	
32	R1004756	1004756	Housing - Bearing Drive End	1	
<i>Detail Description: Includes: R336962 Seal, R170714 Fitting, R302-5 Zerk & R254-79 Cup:</i>					
33	R5002151	5002151	Hardware Kit - Spring/Washer	1	
<i>Detail Description: Includes 1 ea: R304745 Washer, R363047 Spring:</i>					
34	R304745	304745	Washer - Reel	1	
35	R364900	364900	Nut - Reel Tension	1	
36	R163398	163398, 163892	Seal - Spacer Assy	1	
37	R367164	367164	Spacer - Reel	1	
38	R453011	453011	Washer - Flat 3/8 SAE Y/Zinc	1	
39	R3254-6	3254-6, 446140, 446142	Washer - Lock 3/8	1	
40	R400294	400294	Screw - 3/8 24 x 3/4 Hex C/Zinc	1	

All original equipment manufacturers names and part numbers are used for identification purposes only, and we are in no way implying that our products are original equipment parts. Prices subject to change without notice.



Replaces Jacobsen Eclipse 122F Parts

Floating Head Cutting Unit
Reel & Bedknife



Item No	R&R Part No.	OEM Part No.	Description	Qty Req	Order Quantity
41	R153979	153979, 3008439	Bracket - Front Roller	1	
42	R441674	441674	Screw - 5/16-18 x 1-3/4 Carriage	2	
43	R352737	352737	Screw - Set 1/4 x 7/8 Sq Head	2	
44	R461256	461256	Pin - 1/4 x 1	1	
45	R164144	1000480, 163397, 164144, 2000060	Housing - Reel Bearing	1	
<i>Detail Description: Includes R336962 Seal, R302-5 Zerk, R170714 Relief Fitting & R254-79 Cup:</i>					
48	R153980	153980, 3008438	Bracket - Front Roller	1	
49	R443102	443102	Nut - 1/4-20 Yellow Zinc	4	
50	R400184	400184, 400194	Screw - 5/16-18 x 3/4 Hex	2	
51	R1000997	1000997	Decal - Warning	1	
52	R254-78	254-78, 385174, 4121174, 4135152	Tapered Bearing Cone	2	
53	R254-79	254-79, 4121175	Cup - Bearing	2	
<i>Detail Description: Use R254-79M installation mandrel to properly install race.:</i>					

All original equipment manufacturers names and part numbers are used for identification purposes only, and we are in no way implying that our products are original equipment parts. Prices subject to change without notice.