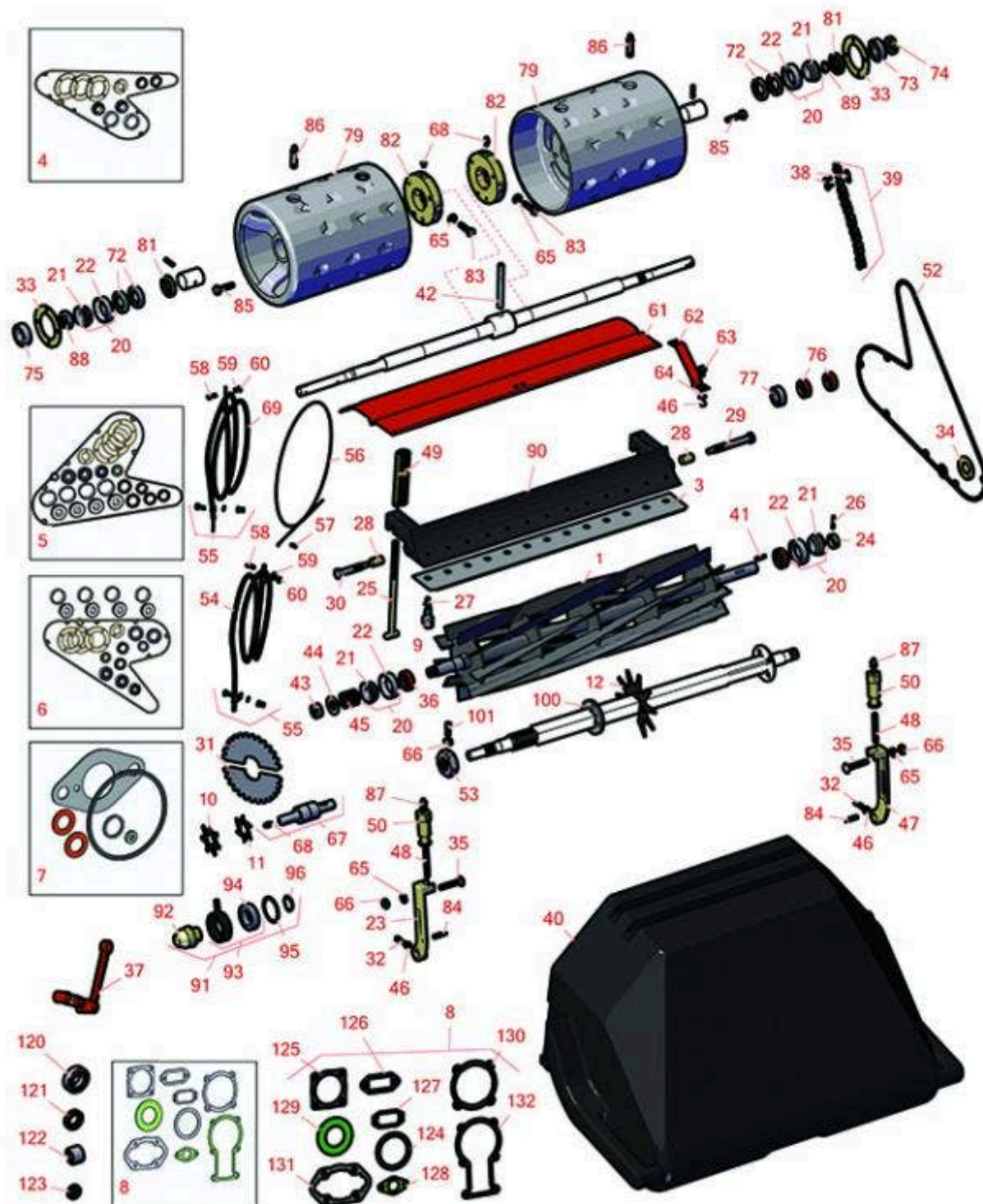




Replaces Jacobsen PGM 19 Parts

Cutting Unit
Reel & Bedknife



All original equipment manufacturers names and part numbers are used for identification purposes only, and we are in no way implying that our products are original equipment parts. Prices subject to change without notice.



Replaces Jacobsen PGM 19 Parts

Cutting Unit
Reel & Bedknife



Item No	R&R Part No.	OEM Part No.	Description	Qty Req	Order Quantity
---------	--------------	--------------	-------------	---------	----------------

R&R Reels, Lifetime Guaranteed

1	R503206	503206	Reel - 9 Blade	1	
---	----------------	--------	----------------	---	--

Detail Description: R&R Reel blades are expertly crafted from premium high carbon-boron alloy steel, heat-treated to perfectly complement both R&R and OEM bedknives. Each reel undergoes precision cylindrical grinding on bearing surfaces, followed by relief grinding for optimal performance. Advanced computer balancing ensures extended reel and bearing life. Backed by our lifetime guarantee against defects in materials and craftsmanship under normal use, R&R Reels deliver unmatched durability and cutting precision you can trust.:

1	R101350		Reel - 11 Blade	1	
---	----------------	--	-----------------	---	--

Detail Description: R&R Reel blades are manufactured from high carbon-boron alloy steel and then hardened to RC46-49 to match the temper of our bedknives and original equipment bedknives. All R&R Reels are cylindrically ground on bearing surfaces and then relief ground. Reels are then precision computer balanced for extended bearing and reel life. R&R Products Reels are guaranteed against defects in material and workmanship for the life of the reel under normal use.:

1	R101351		Reel - 14 Blade	1	
---	----------------	--	-----------------	---	--

Detail Description: R&R Reel blades are manufactured from high carbon-boron alloy steel and then hardened to RC46-49 to match the temper of our bedknives and original equipment bedknives. All R&R Reels are cylindrically ground on bearing surfaces and then relief ground. Reels are then precision computer balanced for extended bearing and reel life. R&R Products Reels are guaranteed against defects in material and workmanship for the life of the reel under normal use.:

R&R Bedknives, Lifetime Guaranteed

3	R101273	101273	Bedknife - Tournament 1/16	1	
---	----------------	--------	----------------------------	---	--

Detail Description: R&R Bedknives are manufactured from high carbon-boron alloy steel and then hardened to RC46-49 to match the temper of our reel blades and original equipment reels. Bedknives are surface ground on the top and front edge and straightened three times before being packaged with oil for rust prevention. All R&R Bedknives now have an increased front edge grind for added life. All R&R Bedknives are guaranteed against defects in material and workmanship under normal use for the life of the part.:

3	R101264	503204	Bedknife - Super Thin 3/32	1	
---	----------------	--------	----------------------------	---	--

All original equipment manufacturers names and part numbers are used for identification purposes only, and we are in no way implying that our products are original equipment parts. Prices subject to change without notice.



Replaces Jacobsen PGM 19 Parts

Cutting Unit
Reel & Bedknife



Item No	R&R Part No.	OEM Part No.	Description	Qty Req	Order Quantity
---------	--------------	--------------	-------------	---------	----------------

Detail Description: R&R Bedknives are manufactured from high carbon-boron alloy steel and then hardened to RC46-49 to match the temper of our reel blades and original equipment reels. Bedknives are surface ground on the top and front edge and straightened three times before being packaged with oil for rust prevention. All R&R Bedknives now have an increased front edge grind for added life. All R&R Bedknives are guaranteed against defects in material and workmanship under normal use for the life of the part.:

3	R101263	503205	Bedknife - Thin 1/8	1
---	----------------	--------	---------------------	---

Detail Description: R&R Bedknives are manufactured from high carbon-boron alloy steel and then hardened to RC46-49 to match the temper of our reel blades and original equipment reels. Bedknives are surface ground on the top and front edge and straightened three times before being packaged with oil for rust prevention. All R&R Bedknives now have an increased front edge grind for added life. All R&R Bedknives are guaranteed against defects in material and workmanship under normal use for the life of the part.:

Overhaul Kits & Service Tools

4	R506557		Overhaul Kit - Cutting Unit	1
---	----------------	--	-----------------------------	---

Tech Note: Includes 3 ea.: R304747 Gaskets; 2 ea.: R304736 Seals, R254-78 Bearings, R254-79 Bearing Cups; 1 ea.: R329037 Gasket & R304757 Gasket:

Detail Description: Includes gaskets, seals, bearings, and cups to rebuild one cutting unit, 1 ea.: R329037, R304757; 2 ea.: R304736, R254-78, R254-79; & 3 ea.: R304747:

5	R506558		Overhaul Kit - Cutting Unit 84 - Up	1
---	----------------	--	-------------------------------------	---

Detail Description: Includes: 4 ea.: R254-78 Bearing, R254-79 Cup; 3 ea.: R304747 Gasket; 2 ea.: R337677 Seal, R304736 Seal; 1 ea.: R329037 Gasket, R304757 Gasket, R343667 Bearing, R303566 Bearing, R313777 Seal, R303490 Bearing, R337678 Seal:

6	R506559		Overhaul Kit - Cutting Unit 1983 - Prior	1
---	----------------	--	--	---

Detail Description: Includes: 4 ea.: R254-78 Bearing, R254-79 Cup; 3 ea.: R304747 Gasket; 2 ea.: R304736 Seal, R325652 Seal; 1 ea.: R329037 Gasket; R304757 Gasket; R343667 Bearing; R303566 Bearing; R313777 Seal; R303490 Bearing; R304751 Seal:

7	R112695	112695	Carburetor Kit	1
---	----------------	--------	----------------	---

2 Cycle Engine Gasket Kit

8	R500035	500035	Gasket - Kit Engine	0
---	----------------	--------	---------------------	---

All original equipment manufacturers names and part numbers are used for identification purposes only, and we are in no way implying that our products are original equipment parts. Prices subject to change without notice.



Replaces Jacobsen PGM 19 Parts

Cutting Unit
Reel & Bedknife



Item No	R&R Part No.	OEM Part No.	Description	Qty Req	Order Quantity
---------	--------------	--------------	-------------	---------	----------------

Detail Description: Includes: 1ea.: R308594, R341794, R309749, R341793, R309761, R341792, R313336, R326728, R325488:

9	R101272T		Bedknife Screw Driver Tool	0	
---	-----------------	--	----------------------------	---	--

Tech Note: Easily install and remove bed knife screws with the help of a ratchet. Tool manufactured with hardened alloy steel.:

Detail Description: Easily install and remove bed knife screws with the help of a ratchet. Tool manufactured with hardened alloy steel.:

Blades

10	R363014	363014	Verti-Cut Blade - 2-3/8 Dia	85	
11	R363808	363808	Blade - V-Cut 2 Dia	85	
12	R101160		Verti-Cut Blade - Fits 22 Gm	26	
12	R101160C		Verti-Cut Blade - Fits 22 Gm Carbide Tipped	26	

Other Parts Available

20	R500534	500534, R500534	Bearing - with Cup	2	
<i>Detail Description: Kit includes: 1 ea R254-78- Bearing Cone & R254-79 Bearing Cone:</i>					
21	R254-78	254-78, 385174, 4121174, 4135152	Tapered Bearing Cone	4	
22	R254-79	254-79, 4121175	Cup - Bearing	4	
<i>Detail Description: Use R254-79M installation mandrel to properly install race.:</i>					
23	R153979	153979, 3008439	Bracket - Front Roller	1	
24	R325654	325654	Collar - Reel Shaft	1	
25	R332516	332516	Rod - Adjusting (Pgm)	2	

All original equipment manufacturers names and part numbers are used for identification purposes only, and we are in no way implying that our products are original equipment parts. Prices subject to change without notice.



Replaces Jacobsen PGM 19 Parts

Cutting Unit
Reel & Bedknife



Item No	R&R Part No.	OEM Part No.	Description	Qty Req	Order Quantity
26	R461173	461173	Pin - Grooved	1	
27	R101272	101272, 3009138, 402578, 800813	Screw - Bedknife 1/4-20 x 1/2	13	
28	R545940	2500759, 545940	Bushing	2	
29	R347168	347168	Stud - Backing LH 3-1/2	1	
30	R347169	347169, 365501	Stud - Backing RH 2-5/16	1	
31	R314184	314184, 364880	Disc - Clutch Set/2	1	
32	R352737	352737	Screw - Set 1/4 x 7/8 Sq Head	2	
33	R304747	304747	Gasket - Pgm	3	
34	R304757	304757	Gasket - Pgm	1	
35	R441674	441674	Screw - 5/16-18 x 1-3/4 Carriage	2	
36	R304736	304736	Seal - Reel	2	
37	R239043	239043	Lever - Clutch	1	
38	R470503	470503	Link - Connecting NO.41	2	
38	R4100		Link - Offset Chain NO.41	0	
39	R500325	500325	Chain - w/Link Reel to Tract	1	
39	R500326	500326	Chain - w/Link Pto to Reel	1	
40	R101540	68110	Grass Basket - Heavy Duty	1	
<i>Detail Description: Due to excessive air freight charges, this item will be shipped ground freight.
Please note: Due to excessive air freight charges, this item will be shipped ground freight.:</i>					
41	R463113	463113	Key - Reel Hi Pro	2	

All original equipment manufacturers names and part numbers are used for identification purposes only, and we are in no way implying that our products are original equipment parts. Prices subject to change without notice.



Replaces Jacobsen PGM 19 Parts

Cutting Unit
Reel & Bedknife



Item No	R&R Part No.	OEM Part No.	Description	Qty Req	Order Quantity
42	R308028	308028	Pin - Hardened Traction Shaft	1	
43	R444713	444713	Locknut - 5/8-18 Hex Center	1	
44	R453020	453020	Washer - 5/8 SAE Flat Z	1	
45	R363047	348846, 363047	Spring - Reel	1	
46	R443102	443102	Nut - 1/4-20 Yellow Zinc	2	
47	R153980	153980, 3008438	Bracket - Front Roller	1	
48	R343616	343616, 443102	Stud	2	
49	R307360	307360	Bed Bar - Spring	2	
50	R343617	343617	Knob - Adjusting	2	
50	R365009	3005692, 365009, 365170, 441674	Knob - Adjusting Roller	2	
52	R329037	329037	Gasket - Pgm	1	
53	R352437	352437	Nut - V-Cut Shaft	1	
54	R154034	154034	Housing - Throttle Wire	1	
55	R303962	303962	Stud - Throttle Wire	1	
56	R342686	342686	Wire - Throttle	1	
57	R402056	402056	Screw - Throttle Wire Stud	1	
58	R403936	403936	Screw - 10-32 x 1/2THROTTLE	1	
59	R446116	446116	Washer - Lock 10	1	
60	R444312	444312	Nut - 10-32	1	

All original equipment manufacturers names and part numbers are used for identification purposes only, and we are in no way implying that our products are original equipment parts. Prices subject to change without notice.



Replaces Jacobsen PGM 19 Parts

Cutting Unit
Reel & Bedknife



Item No	R&R Part No.	OEM Part No.	Description	Qty Req	Order Quantity
61	R500614	331722, 500614	Shield - Grass	1	
62	R315183	315183	Brace - Grass Shield 84-PRI	1	
62	R363328	363328	Brace - Grass Shield 85-ON	1	
63	R400102	400102	Bolt - Hex HD 1/4-20 x 3/8 GR5	1	
64	R3253-3	3253-3, 446128, 446130	Washer - Lock 1/4	1	
65	R446136	446134, 446136	Washer - Lock 5/16 Zinc	2	
66	R443106	443106	Nut - 5/16-18 Y/Zinc Plated	2	
67	R554571	554571	Bearing	2	
68	R302-5	302-5, 471214, 471223, 471226	Fitting - Grease	2	
69	R163541	163541	Cable - Throttle 4 Cyc	1	
72	R337677	315257, 337677	Seal - Oil	4	
72	R325652	325652	Seal - Inner (Cork) Roller	4	
73	R303566	303566	Bearing - LH Wheel Support	1	
74	R313777	313777	Seal - LH Wheel Support	1	
75	R343667	343667	Bearing - Ball	1	
76	R337678	337678, 365753	Seal - Clutch Shaft Bearing	2	
76	R304751	304751	Seal - Cork Clutch Shaft	2	
77	R303490	303490	Bearing - Clutch Shaft	1	

All original equipment manufacturers names and part numbers are used for identification purposes only, and we are in no way implying that our products are original equipment parts. Prices subject to change without notice.



Replaces Jacobsen PGM 19 Parts

Cutting Unit
Reel & Bedknife



Item No	R&R Part No.	OEM Part No.	Description	Qty Req	Order Quantity
79	R163523	163523	Roller - Traction	2	
81	R364170	364170, 366648	Seal	2	
82	R338394	338394	Hub - Traction Roller	2	
83	R400190	352737, 400190	Bolt - Hex HD 5/16-18 x 1-1/4 GR5	6	
84	R461256	461256	Pin - 1/4 x 1	2	
85	R364171	364171	Bolt - Flanged Hex 5/16-18 x 1-1/4	8	
86	R471222	471222	Zerk - Grease w/ Ext.	2	
87	R471219	366852, 471219	Zerk - Grease	2	
88	R444742	444742	Nut - 3/4-16 Gripco Centerlock	1	
89	R458013	458013	Ring - Retaining	1	
90	R220289	121855, 220289	Bed Bar - Bedknife	1	
91	R101150		Shifter - Clutch Assy	1	
92	R101151		Sleeve - Throwout	1	
93	R101152		Shifter - w/Bearing	1	
94	R101153		Bearing - Shifter	1	
95	R101154		Ring - Retaining Shifter	1	
96	R101155		Ring - Retaining	1	
100	R352221	352221	Spacer - Nylon V-Cut Shaft	76	
101	R412017	412017	Screw - Sq. HD Set	1	
2 Cycle Engine Parts					
120	R312437	312437	Bearing	0	

All original equipment manufacturers names and part numbers are used for identification purposes only, and we are in no way implying that our products are original equipment parts. Prices subject to change without notice.



Replaces Jacobsen PGM 19 Parts

*Cutting Unit
Reel & Bedknife*



Item No	R&R Part No.	OEM Part No.	Description	Qty Req	Order Quantity
121	R325472	325472	Seal	0	
122	R325473	325473	Bearing - Pgm Eng	0	
123	R325485	325485	Seal - Pgm Eng.	0	
124	R308594	308594	Gasket - Muffler	0	
125	R309749	309749	Gasket - Cylinder Head	0	
126	R309761	309761	Gasket - Exhaust Flange	0	
127	R313336	313336	Gasket - Reed Plate	0	
128	R325488	325488	Gasket - Carb Mounting	0	
129	R326728	326728	Gasket - Muffler	0	
130	R341792	341792	Gasket - Crankcase Head	0	
131	R341793	341793	Gasket - 2 Cycle Engine	0	
132	R341794	341794	Gasket - Backplate	0	

All original equipment manufacturers names and part numbers are used for identification purposes only, and we are in no way implying that our products are original equipment parts. Prices subject to change without notice.