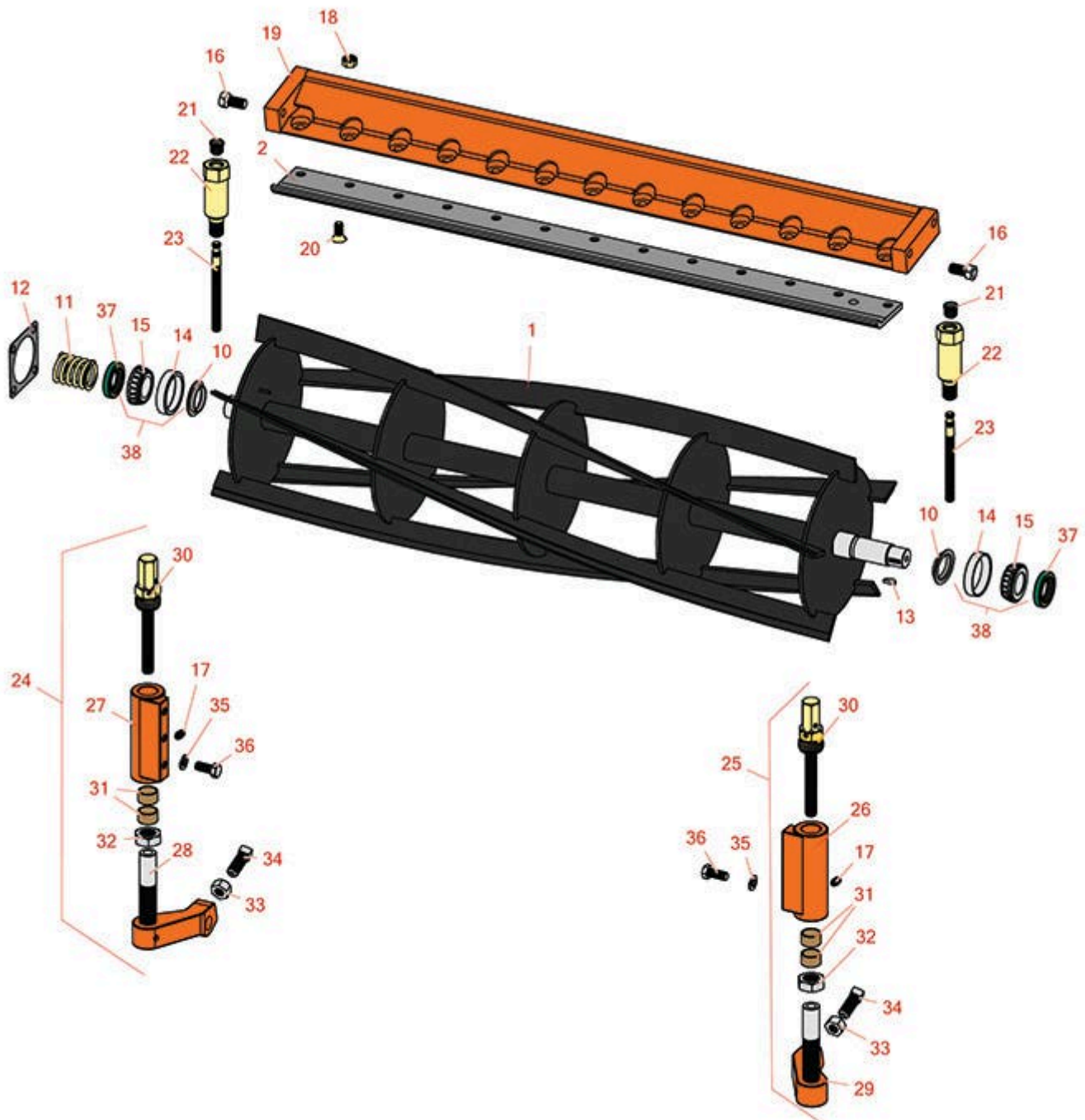




# Replaces Jacobsen ST-5111 Parts

Cutting Unit  
Reel & Bedknife



All original equipment manufacturers names and part numbers are used for identification purposes only, and we are in no way implying that our products are original equipment parts. Prices subject to change without notice.



# Replaces Jacobsen ST-5111 Parts

Cutting Unit  
Reel & Bedknife



| Item No | R&R Part No. | OEM Part No. | Description | Qty Req | Order Quantity |
|---------|--------------|--------------|-------------|---------|----------------|
|---------|--------------|--------------|-------------|---------|----------------|

## R&R Reels, Lifetime Guaranteed

|   |                |        |                         |   |
|---|----------------|--------|-------------------------|---|
| 1 | <b>R503522</b> | 503522 | Reel - 5 Blade RH 9 Dia | 3 |
|---|----------------|--------|-------------------------|---|

*Detail Description: R&R Reel blades are expertly crafted from premium high carbon-boron alloy steel, heat-treated to perfectly complement both R&R and OEM bedknives. Each reel undergoes precision cylindrical grinding on bearing surfaces, followed by relief grinding for optimal performance. Advanced computer balancing ensures extended reel and bearing life. Backed by our lifetime guarantee against defects in materials and craftsmanship under normal use, R&R Reels deliver unmatched durability and cutting precision you can trust.:*

|   |                |        |                         |   |
|---|----------------|--------|-------------------------|---|
| 1 | <b>R503523</b> | 503523 | Reel - 5 Blade LH 9 Dia | 2 |
|---|----------------|--------|-------------------------|---|

*Detail Description: R&R Reel blades are expertly crafted from premium high carbon-boron alloy steel, heat-treated to perfectly complement both R&R and OEM bedknives. Each reel undergoes precision cylindrical grinding on bearing surfaces, followed by relief grinding for optimal performance. Advanced computer balancing ensures extended reel and bearing life. Backed by our lifetime guarantee against defects in materials and craftsmanship under normal use, R&R Reels deliver unmatched durability and cutting precision you can trust.:*

|   |                |        |                          |   |
|---|----------------|--------|--------------------------|---|
| 1 | <b>R503524</b> | 503524 | Reel - 10 Blade RH 9 Dia | 3 |
|---|----------------|--------|--------------------------|---|

*Detail Description: R&R Reel blades are expertly crafted from premium high carbon-boron alloy steel, heat-treated to perfectly complement both R&R and OEM bedknives. Each reel undergoes precision cylindrical grinding on bearing surfaces, followed by relief grinding for optimal performance. Advanced computer balancing ensures extended reel and bearing life. Backed by our lifetime guarantee against defects in materials and craftsmanship under normal use, R&R Reels deliver unmatched durability and cutting precision you can trust.:*

|   |                |        |                          |   |
|---|----------------|--------|--------------------------|---|
| 1 | <b>R503525</b> | 503525 | Reel - 10 Blade LH 9 Dia | 2 |
|---|----------------|--------|--------------------------|---|

*Detail Description: R&R Reel blades are expertly crafted from premium high carbon-boron alloy steel, heat-treated to perfectly complement both R&R and OEM bedknives. Each reel undergoes precision cylindrical grinding on bearing surfaces, followed by relief grinding for optimal performance. Advanced computer balancing ensures extended reel and bearing life. Backed by our lifetime guarantee against defects in materials and craftsmanship under normal use, R&R Reels deliver unmatched durability and cutting precision you can trust.:*

## R&R Bedknives, Lifetime Guaranteed

|   |                |                              |                            |   |
|---|----------------|------------------------------|----------------------------|---|
| 2 | <b>R503550</b> | 331692,<br>503363,<br>503550 | Bedknife - 30 in (13 Hole) | 1 |
|---|----------------|------------------------------|----------------------------|---|

All original equipment manufacturers names and part numbers are used for identification purposes only, and we are in no way implying that our products are original equipment parts. Prices subject to change without notice.



# Replaces Jacobsen ST-5111 Parts

Cutting Unit  
Reel & Bedknife



| Item No | R&R Part No. | OEM Part No. | Description | Qty Req | Order Quantity |
|---------|--------------|--------------|-------------|---------|----------------|
|---------|--------------|--------------|-------------|---------|----------------|

*Detail Description: R&R Bedknives are manufactured from high carbon-boron alloy steel and then hardened to RC46-49 to match the temper of our reel blades and original equipment reels. Bedknives are surface ground on the top and front edge and straightened three times before being packaged with oil for rust prevention. All R&R Bedknives now have an increased front edge grind for added life. All R&R Bedknives are guaranteed against defects in material and workmanship under normal use for the life of the part.:*

## Other Parts Available

|    |                 |  |                                   |    |
|----|-----------------|--|-----------------------------------|----|
| 10 | <b>R364275</b>  | 364275                                 | Disc - Reel Shaft                 | 2  |
| 11 | <b>R350671</b>  | 350671                                 | Spring - Reel                     | 1  |
| 12 | <b>R345473</b>  | 345473                                 | Gasket - Reel Motor               | 1  |
| 13 | <b>R463017</b>  | 463017                                 | Key - Woodruff                    | 1  |
| 14 | <b>R254-72</b>  | 313456                                 | Cup - Bearing                     | 2  |
| 15 | <b>R254-94</b>  | 313089                                 | Tapered Bearing Cone              | 2  |
| 16 | <b>R315298</b>  | 315298                                 | Bolt - Bed Bar                    | 4  |
| 17 | <b>R302-5</b>   | 302-5,<br>471214,<br>471223,<br>471226 | Fitting - Grease                  | 2  |
| 18 | <b>R101271</b>  | 445684                                 | Nut - Bedknife                    | 13 |
| 19 | <b>R557618</b>  | 121499,<br>557618                      | Backing Bar - Bedknife            | 1  |
| 20 | <b>R101270</b>  | 402698,<br>403757                      | Screw - Bedknife 3/8-24 x 13/16   | 13 |
| 21 | <b>R472519</b>  | 472519                                 | Plug - Adjusting Handle           | 2  |
| 22 | <b>R3003611</b> | 3003611                                | Handle - Adjusting 3/8-24 Thread  | 2  |
| 22 | <b>R365994</b>  | 365994                                 | Handle - Adjusting 3/8-16 Thread  | 2  |
| 23 | <b>R3004189</b> | 3004189                                | Screw - Adjusting Reel 3/8-24 Thd | 2  |

All original equipment manufacturers names and part numbers are used for identification purposes only, and we are in no way implying that our products are original equipment parts. Prices subject to change without notice.



## Replaces Jacobsen ST-5111 Parts

Cutting Unit  
Reel & Bedknife



| Item No | R&R Part No.   | OEM Part No.                 | Description                        | Qty Req | Order Quantity |
|---------|----------------|------------------------------|------------------------------------|---------|----------------|
| 23      | <b>R364265</b> | 364265                       | Screw - Adjusting Reel 3/8-16 Thd  | 2       |                |
| 24      | <b>R132532</b> | 132532                       | Height Adjustment Assy RH          | 2       |                |
| 25      | <b>R132533</b> | 132533                       | Height Adjustment Assy LH          | 2       |                |
| 26      | <b>R163921</b> | 163921                       | Body - Assy LH                     | 2       |                |
| 27      | <b>R163920</b> | 163920                       | Body - Assy RH                     | 2       |                |
| 28      | <b>R131815</b> | 131815                       | Bracket - Roller RH                | 2       |                |
| 29      | <b>R131814</b> | 131814                       | Bracket - Roller LH                | 2       |                |
| 30      | <b>R163467</b> | 163467                       | Screw - Assy. HOC Adj.             | 4       |                |
| 31      | <b>R304392</b> | 304392                       | Bushing - Bronze                   | 8       |                |
| 32      | <b>R3220-7</b> | 443832                       | Nut - 3/4-16 Jam Zinc              | 4       |                |
| 33      | <b>R443818</b> | 443818                       | Nut - 1/2-13 Hex Jam Zinc          | 4       |                |
| 34      | <b>R412003</b> | 412003                       | Screw - 1/2-13 x 1-1/2 Sq HD       | 4       |                |
| 35      | <b>R3254-6</b> | 3254-6,<br>446140,<br>446142 | Washer - Lock 3/8                  | 12      |                |
| 36      | <b>R400260</b> | 400260                       | Bolt - Hex HD 3/8-16 x 7/8         | 12      |                |
| 37      | <b>R337593</b> | 3000983,<br>337593           | Seal                               | 2       |                |
| 38      | <b>R500596</b> | 500596                       | Tapered Bearing Set - Cup and Cone | 2       |                |

All original equipment manufacturers names and part numbers are used for identification purposes only, and we are in no way implying that our products are original equipment parts. Prices subject to change without notice.