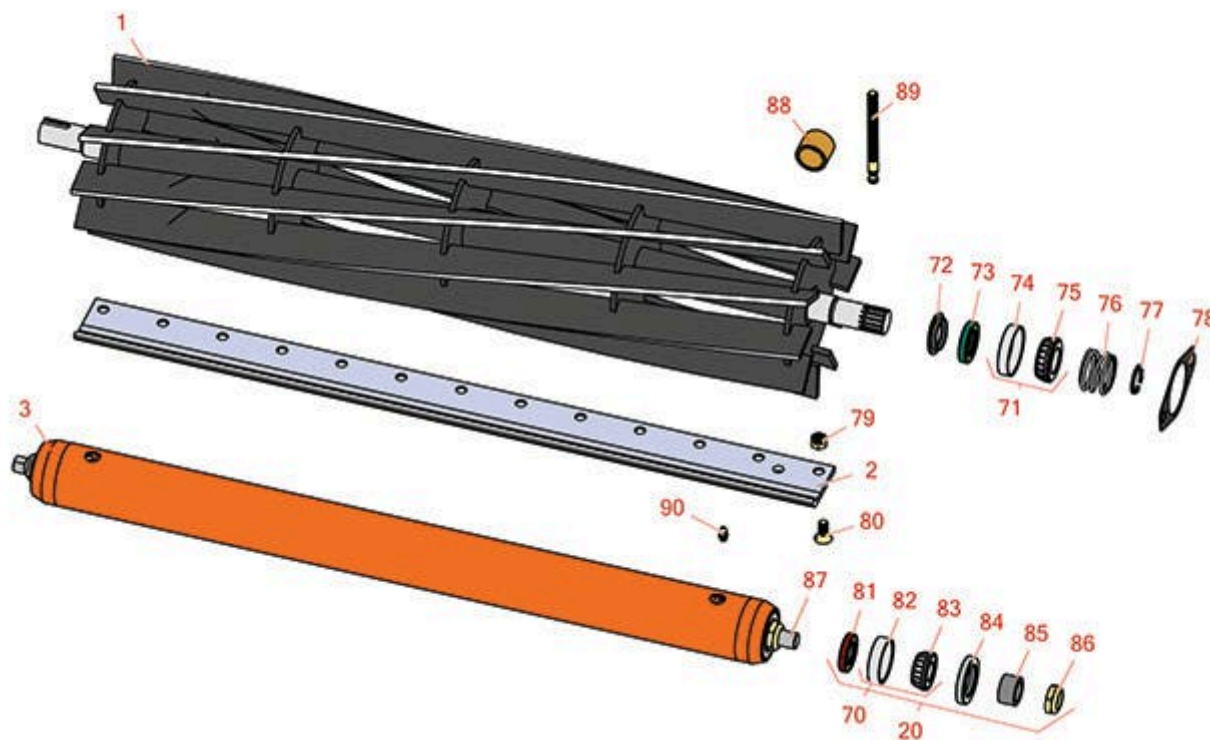




# Replaces Jacobsen Tri-King 1884D Parts

Cutting Unit  
Reel & Bedknife



All original equipment manufacturers names and part numbers are used for identification purposes only, and we are in no way implying that our products are original equipment parts. Prices subject to change without notice.



# Replaces Jacobsen Tri-King 1884D Parts

Cutting Unit  
Reel & Bedknife



Item No	R&R Part No.	OEM Part No.	Description	Qty Req	Order Quantity
---------	--------------	--------------	-------------	---------	----------------

## R&R Reels, Lifetime Guaranteed

1	<b>R503359</b>	503359	Reel - 5 Blade LH/Center - 30 in	2	
---	----------------	--------	----------------------------------	---	--

*Detail Description: R&R Reel blades are expertly crafted from premium high carbon-boron alloy steel, heat-treated to perfectly complement both R&R and OEM bedknives. Each reel undergoes precision cylindrical grinding on bearing surfaces, followed by relief grinding for optimal performance. Advanced computer balancing ensures extended reel and bearing life. Backed by our lifetime guarantee against defects in materials and craftsmanship under normal use, R&R Reels deliver unmatched durability and cutting precision you can trust.:*

1	<b>R503360</b>	503360	Reel - 5 Blade RH 30 in	1	
---	----------------	--------	-------------------------	---	--

*Detail Description: R&R Reel blades are expertly crafted from premium high carbon-boron alloy steel, heat-treated to perfectly complement both R&R and OEM bedknives. Each reel undergoes precision cylindrical grinding on bearing surfaces, followed by relief grinding for optimal performance. Advanced computer balancing ensures extended reel and bearing life. Backed by our lifetime guarantee against defects in materials and craftsmanship under normal use, R&R Reels deliver unmatched durability and cutting precision you can trust.:*

1	<b>R503361</b>	503361	Reel - 10 Blade LH/Center - 30 in	2	
---	----------------	--------	-----------------------------------	---	--

*Detail Description: R&R Reel blades are expertly crafted from premium high carbon-boron alloy steel, heat-treated to perfectly complement both R&R and OEM bedknives. Each reel undergoes precision cylindrical grinding on bearing surfaces, followed by relief grinding for optimal performance. Advanced computer balancing ensures extended reel and bearing life. Backed by our lifetime guarantee against defects in materials and craftsmanship under normal use, R&R Reels deliver unmatched durability and cutting precision you can trust.:*

1	<b>R503362</b>	503362	Reel - 10 Blade RH - 30 in	1	
---	----------------	--------	----------------------------	---	--

*Detail Description: R&R Reel blades are expertly crafted from premium high carbon-boron alloy steel, heat-treated to perfectly complement both R&R and OEM bedknives. Each reel undergoes precision cylindrical grinding on bearing surfaces, followed by relief grinding for optimal performance. Advanced computer balancing ensures extended reel and bearing life. Backed by our lifetime guarantee against defects in materials and craftsmanship under normal use, R&R Reels deliver unmatched durability and cutting precision you can trust.:*

## R&R Bedknives, Lifetime Guaranteed

2	<b>R503550</b>	331692, 503363, 503550	Bedknife - 30 in (13 Hole)	1	
---	----------------	------------------------------	----------------------------	---	--

All original equipment manufacturers names and part numbers are used for identification purposes only, and we are in no way implying that our products are original equipment parts. Prices subject to change without notice.



# Replaces Jacobsen Tri-King 1884D Parts

Cutting Unit  
Reel & Bedknife



Item No	R&R Part No.	OEM Part No.	Description	Qty Req	Order Quantity
---------	--------------	--------------	-------------	---------	----------------

*Detail Description: R&R Bedknives are manufactured from high carbon-boron alloy steel and then hardened to RC46-49 to match the temper of our reel blades and original equipment reels. Bedknives are surface ground on the top and front edge and straightened three times before being packaged with oil for rust prevention. All R&R Bedknives now have an increased front edge grind for added life. All R&R Bedknives are guaranteed against defects in material and workmanship under normal use for the life of the part.:*

## R&R Rollers

3	<b>R104130</b>	116933, 132640	Roller - Smooth Tubular Steel	1
---	----------------	-------------------	-------------------------------	---

*Detail Description: Constructed with a through shaft, this heavy duty roller uses greasable tapered bearings for extended life.:*

## Overhaul Kits

20	<b>R100138</b>		Overhaul Kit - Roller	0
----	----------------	--	-----------------------	---

*Detail Description: Includes 2 ea.: R3296-15 Locknuts, R253-152 Seals, R253-117 Seals, R5-4038 Wear Sleeves, R254-78 Bearings, R254-79 Bearing Cups, & R302-5 Grease Fittings:*

## Other Parts Available

70	<b>R500534</b>	500534, R500534	Bearing - with Cup	0
----	----------------	--------------------	--------------------	---

*Detail Description: Kit includes: 1 ea R254-78- Bearing Cone & R254-79 Bearing Cone:*

71	<b>R500596</b>	500596	Tapered Bearing Set - Cup and Cone	2
----	----------------	--------	------------------------------------	---

72	<b>R364275</b>	364275	Disc - Reel Shaft	2
----	----------------	--------	-------------------	---

73	<b>R337593</b>	3000983, 337593	Seal	2
----	----------------	--------------------	------	---

74	<b>R254-72</b>	313456	Cup - Bearing	2
----	----------------	--------	---------------	---

75	<b>R254-94</b>	313089	Tapered Bearing Cone	2
----	----------------	--------	----------------------	---

76	<b>R364148</b>	364148	Spring - Reel Brg Tension	1
----	----------------	--------	---------------------------	---

77	<b>R458039</b>	458039	Ring - Retaining	1
----	----------------	--------	------------------	---

All original equipment manufacturers names and part numbers are used for identification purposes only, and we are in no way implying that our products are original equipment parts. Prices subject to change without notice.



# Replaces Jacobsen Tri-King 1884D Parts

Cutting Unit  
Reel & Bedknife



Item No	R&R Part No.	OEM Part No.	Description	Qty Req	Order Quantity
78	<b>R364777</b>	364777	Gasket - Motor End	1	
79	<b>R101271</b>	445684	Nut - Bedknife	13	
80	<b>R101270</b>	402698, 403757	Screw - Bedknife 3/8-24 x 13/16	13	
81	<b>R253-152</b>	3001656	Seal - Inner Roller	2	
82	<b>R254-79</b>	254-79, 4121175	Cup - Bearing	2	
<i>Detail Description: Use R254-79M installation mandrel to properly install race.:</i>					
83	<b>R254-78</b>	254-78, 385174, 4121174, 4135152	Tapered Bearing Cone	2	
84	<b>R253-117</b>	253-117, 3004882	Seal - Outer Triple Lip	2	
85	<b>R5-4038</b>	5-4038	Sleeve - Wear Reel Shaft	2	
86	<b>R3296-15</b>	3296-15, 367029, 444742	Locknut - 3/4-16 Nylon Jam	2	
87	<b>R1013820</b>		Shaft - 1 SS Roller 2 Pc	1	
88	<b>R364140</b>	364140	Bushing	2	
<i>Tech Note: Pull Frame:</i>					
89	<b>R364265</b>	364265	Screw - Adjusting Reel 3/8-16 Thd	2	
90	<b>R302-5</b>	302-5, 471214, 471223, 471226	Fitting - Grease	2	

All original equipment manufacturers names and part numbers are used for identification purposes only, and we are in no way implying that our products are original equipment parts. Prices subject to change without notice.