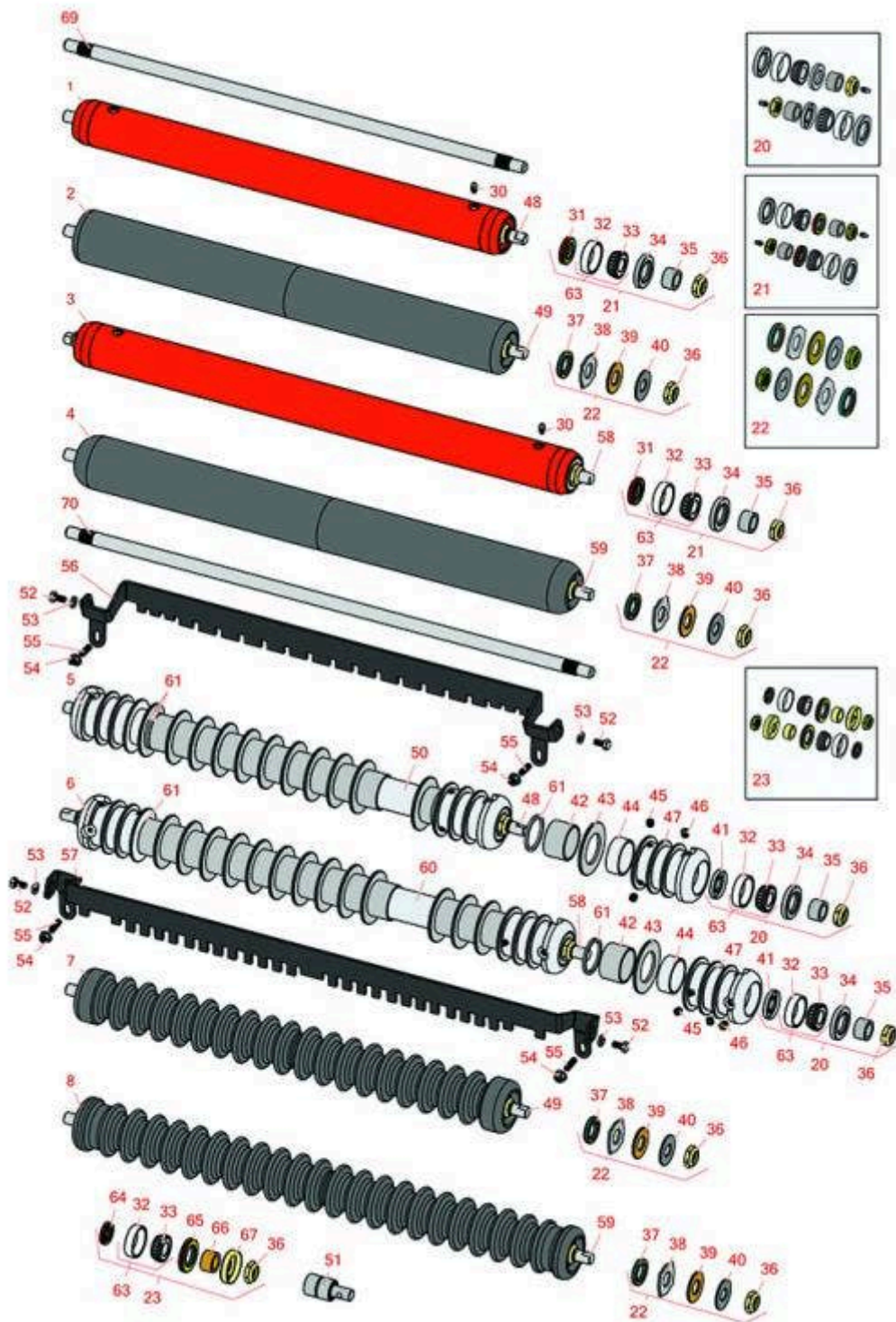




Replaces Jacobsen Tri-King 1900D Parts

Cutting Unit
Rollers



All original equipment manufacturers names and part numbers are used for identification purposes only, and we are in no way implying that our products are original equipment parts. Prices subject to change without notice.



Replaces Jacobsen Tri-King 1900D Parts

Cutting Unit
Rollers



Item No	R&R Part No.	OEM Part No.	Description	Qty Req	Order Quantity
---------	--------------	--------------	-------------	---------	----------------

R&R Rollers

1	R104125	116940, 131863, 132639	Roller - Smooth Tubular Steel	0	
---	----------------	------------------------------	-------------------------------	---	--

Tech Note: Fits 26" Unit:

Detail Description: Constructed with a through shaft, this heavy duty roller uses greasable tapered bearings for extended life.:

2	R1013630		Roller - Smooth UHMW Polyethylene	0	
---	-----------------	--	-----------------------------------	---	--

Tech Note: Fits 26" Unit:

Detail Description: Machined from solid UHMW, this low maintenance roller uses a 1" solid stainless steel shaft and requires no grease. UHMW material prevents build-up of debris.:

3	R104130	116933, 132640	Roller - Smooth Tubular Steel	0	
---	----------------	-------------------	-------------------------------	---	--

Tech Note: Fits 30" Unit:

Detail Description: Constructed with a through shaft, this heavy duty roller uses greasable tapered bearings for extended life.:

4	R1013650		Roller - Smooth UHMW Polyethylene 30	0	
---	-----------------	--	--------------------------------------	---	--

Tech Note: Fits 30" Unit:

Detail Description: Machined from solid UHMW, this low maintenance roller rotates around a 1" solid stainless steel shaft and requires no bearings or grease. Patented groove design and smooth UHMW material prevents build-up of debris.:

5	R104100	116906, 123266	Roller - Grooved Repairable Steel - 26	0	
---	----------------	-------------------	--	---	--

Tech Note: Fits 26" Unit:

Detail Description: Constructed with a through shaft and greasable ball bearings, this roller can be repaired by unscrewing the ends and replacing the series of washers and spacers.:

All original equipment manufacturers names and part numbers are used for identification purposes only, and we are in no way implying that our products are original equipment parts. Prices subject to change without notice.



Replaces Jacobsen Tri-King 1900D Parts

Cutting Unit
Rollers



Item No	R&R Part No.	OEM Part No.	Description	Qty Req	Order Quantity
---------	--------------	--------------	-------------	---------	----------------

6	R104115	123265, 67729	Roller - Grooved Repairable Steel - 30	0	
---	---------	------------------	--	---	--

Tech Note: Fits 30" Unit:

Detail Description: Constructed with a through shaft and greasable ball bearings, this roller can be repaired by unscrewing the ends and replacing the series of washers and spacers.:

7	R1013620	123266	Roller - Grooved UHMW Polyethylene	0	
---	----------	--------	------------------------------------	---	--

Tech Note: Fits 26" Unit:

Detail Description: Machined from solid UHMW, this low maintenance roller rotates around a 1" solid stainless steel shaft and requires no bearings or grease. Patented groove design and smooth UHMW material prevents build-up of debris.:

8	R1013640	123265	Roller - Grooved UHMW Polyethylene - 30	0	
---	----------	--------	---	---	--

Tech Note: Fits 30" Unit:

Detail Description: Machined from solid UHMW, this low maintenance roller rotates around a 1" solid stainless steel shaft and requires no bearings or grease. Patented groove design and smooth UHMW material prevents build-up of debris.:

Overhaul Kits

20	R100137		Overhaul Kit - Roller	0	
----	---------	--	-----------------------	---	--

Detail Description: Includes 2 ea.: R3296-15 Locknuts, R302-5 Grease Fittings, R253-122 Seals, R253-117 Seals, R5-4038 Wear Sleeves, R254-78 Bearings & R254-79 Bearing Cups:

21	R100138		Overhaul Kit - Roller	0	
----	---------	--	-----------------------	---	--

Detail Description: Includes 2 ea.: R3296-15 Locknuts, R253-152 Seals, R253-117 Seals, R5-4038 Wear Sleeves, R254-78 Bearings, R254-79 Bearing Cups, & R302-5 Grease Fittings:

22	R101399		Overhaul Kit - UHMW 2 Pc Roller	1	
----	---------	--	---------------------------------	---	--

Detail Description: Fits all R&R 2-1/2" - 3-1/2" Dia. Black UHMW Plastic Rollers that do not use ball bearings.. Includes 2 ea.: R1503230 Star Washers, R1503470 Seals, R150333 Thrust Washers, R3296-15 Locknuts, R1503471 Bronze Thrust Washers:

All original equipment manufacturers names and part numbers are used for identification purposes only, and we are in no way implying that our products are original equipment parts. Prices subject to change without notice.



Replaces Jacobsen Tri-King 1900D Parts

Cutting Unit
Rollers



Item No	R&R Part No.	OEM Part No.	Description	Qty Req	Order Quantity
---------	--------------	--------------	-------------	---------	----------------

23	R100133		Overhaul Kit - Roller	0	
<i>Detail Description: Includes: 2ea: R254-78 Bearings, R254-79 Bearing Cups, R3296-15 Locknuts, R338645 Cup Deflectors, R338646 Seals, R338647 Seals, & R366168 Wear Sleeves:</i>					

Other Parts Available

30	R302-5	302-5, 471214, 471223, 471226	Fitting - Grease	2	
31	R253-152	3001656	Seal - Inner Roller	2	
32	R254-79	254-79, 4121175	Cup - Bearing	2	
<i>Detail Description: Use R254-79M installation mandrel to properly install race.:</i>					
33	R254-78	254-78, 385174, 4121174, 4135152	Tapered Bearing Cone	2	
34	R253-117	253-117, 3004882	Seal - Outer Triple Lip	2	
35	R5-4038	5-4038	Sleeve - Wear Reel Shaft	2	
36	R3296-15	3296-15, 367029, 444742	Locknut - 3/4-16 Nylon Jam	2	
37	R1503470		Seal - Inner Wiper	2	
38	R1503230		Washer - Thrust Outer Keyed	2	
39	R1503471		Washer - Thrust SAE660 Bronze	2	
40	R150333		Washer - Flat Keyed Outer SS	2	
41	R253-122		Seal	2	
42	R150676	150676	Spacer - 2-3/4 Dia x 1-1/4 L	0	

All original equipment manufacturers names and part numbers are used for identification purposes only, and we are in no way implying that our products are original equipment parts. Prices subject to change without notice.



Replaces Jacobsen Tri-King 1900D Parts

Cutting Unit
Rollers



Item No	R&R Part No.	OEM Part No.	Description	Qty Req	Order Quantity
43	R150673	150673	Washer - 3 Repairable Roller	0	
44	R150678		Spacer - Grooved Roller 3/4	2	
45	R150691		Screw - Set Nyloc 3/8-16 x 3/8	4	
46	R170714	170714, 471240, 471242	Fitting - Pressure Relief	2	
47	R100103		Roller End - Grooved	2	
48	R104102		Shaft - 26 Roller	1	
49	R1013810		Shaft - 1 SS Roller	1	
50	R104103		Tube - Only Grooved Roller	1	
51	R75-1290	75-1290	Bearing - Roller	2	
52	R400182	400182	Bolt - Hex HD 5/16-18 x 5/8	2	
53	R446136	446134, 446136	Washer - Lock 5/16 Zinc	2	
54	R445781	445781	Nut - 5/16-18 Whiz	2	
55	R415559	415559	Screw - Set 5/16-18 x 1	2	
56	R3001706	3001706	Scraper - 26 Grooved Roller	1	
56	R700508		Scraper - 26 Grooved Roller	1	
57	R3003811	3003811	Scraper - 30 Grooved Roller	1	
57	R700509		Scraper - 30 Grooved Roller	1	
58	R104117		Shaft - 30 Roller	1	
59	R1013820		Shaft - 1 SS Roller 2 Pc	1	
60	R104118		Tube - Only Grooved Roller	1	

All original equipment manufacturers names and part numbers are used for identification purposes only, and we are in no way implying that our products are original equipment parts. Prices subject to change without notice.



Replaces Jacobsen Tri-King 1900D Parts

Cutting Unit
Rollers



Item No	R&R Part No.	OEM Part No.	Description	Qty Req	Order Quantity
61	R150676A		Spacer - 1/8	4	
63	R500534	500534, R500534	Bearing - with Cup	2	
<i>Detail Description: Kit includes: 1 ea R254-78- Bearing Cone & R254-79 Bearing Cone:</i>					
64	R338647	338647	Seal - Inner Roller	2	
65	R338646	338646	Seal - Outer Roller	2	
66	R366168	336168, 366168	Sleeve - Wear Hardened	2	
67	R338645	338645	Deflector - Cup	2	
69	R366588	366588	Shaft - 26 Roller	1	
70	R366587	366587	Shaft - Solid 30 Roller	1	

All original equipment manufacturers names and part numbers are used for identification purposes only, and we are in no way implying that our products are original equipment parts. Prices subject to change without notice.