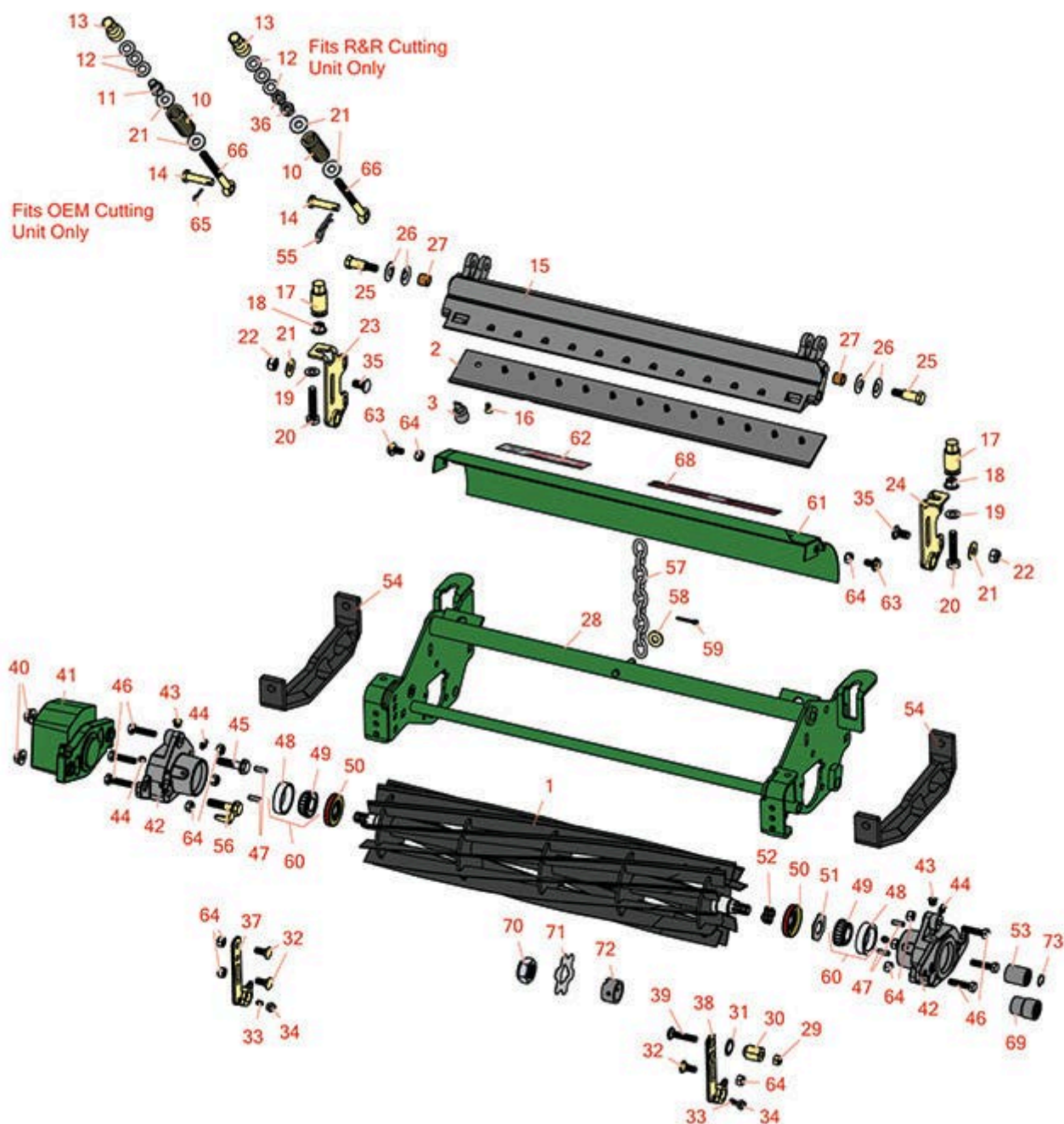




Replaces John Deere 3235B Reel Mower Parts

Medium Cutting Unit
Reel & Bedknife



All original equipment manufacturers names and part numbers are used for identification purposes only, and we are in no way implying that our products are original equipment parts. Prices subject to change without notice.



Replaces John Deere 3235B Reel Mower Parts

Medium Cutting Unit
Reel & Bedknife



Item No	R&R Part No.	OEM Part No.	Description	Qty Req	Order Quantity
---------	--------------	--------------	-------------	---------	----------------

R&R Reels, Lifetime Guaranteed

1	RAET11237	AET11237, AMT2883	Reel - 7 Blade Heavy Duty - External Spline	1	
---	------------------	----------------------	---	---	--

Detail Description: R&R Reel blades are expertly crafted from premium high carbon-boron alloy steel, heat-treated to perfectly complement both R&R and OEM bedknives. Each reel undergoes precision cylindrical grinding on bearing surfaces, followed by relief grinding for optimal performance. Advanced computer balancing ensures extended reel and bearing life. Backed by our lifetime guarantee against defects in materials and craftsmanship under normal use, R&R Reels deliver unmatched durability and cutting precision you can trust.:

1	R101274	AMT2885, AMT538	Reel - 11 Blade - External Spline	1	
---	----------------	--------------------	-----------------------------------	---	--

Detail Description: R&R Reel blades are manufactured from high carbon-boron alloy steel and then hardened to RC46-49 to match the temper of our bedknives and original equipment bedknives. All R&R Reels are cylindrically ground on bearing surfaces and then relief ground. Reels are then precision computer balanced for extended bearing and reel life. R&R Products Reels are guaranteed against defects in material and workmanship for the life of the reel under normal use.:

R&R Bedknives, Lifetime Guaranteed

2	RET17767	ET17767, UC23562	Bedknife - High Cut 5/16	1	
---	-----------------	---------------------	--------------------------	---	--

Detail Description: R&R Bedknives are manufactured from high carbon-boron alloy steel and then hardened to RC46-49 to match the temper of our reel blades and original equipment reels. Bedknives are surface ground on the top and front edge and straightened three times before being packaged with oil for rust prevention. All R&R Bedknives now have an increased front edge grind for added life. All R&R Bedknives are guaranteed against defects in material and workmanship under normal use for the life of the part.:

2	RET17532	ET11066, ET17532	Bedknife - Fairway .189 Min	1	
---	-----------------	---------------------	-----------------------------	---	--

Detail Description: R&R Bedknives are manufactured from high carbon-boron alloy steel and then hardened to RC46-49 to match the temper of our reel blades and original equipment reels. Bedknives are surface ground on the top and front edge and straightened three times before being packaged with oil for rust prevention. All R&R Bedknives now have an increased front edge grind for added life. All R&R Bedknives are guaranteed against defects in material and workmanship under normal use for the life of the part.:

All original equipment manufacturers names and part numbers are used for identification purposes only, and we are in no way implying that our products are original equipment parts. Prices subject to change without notice.



Replaces John Deere 3235B Reel Mower Parts

Medium Cutting Unit
Reel & Bedknife



Item No	R&R Part No.	OEM Part No.	Description	Qty Req	Order Quantity
---------	--------------	--------------	-------------	---------	----------------

2	RET17533	ET14402, ET17533, ET17767, MT4869, MT7351, UC18873	Bedknife - 22in Standard- .126 Min. HOC	1	
---	----------	---	---	---	--

Detail Description: R&R Bedknives are manufactured from high carbon-boron alloy steel and then hardened to RC46-49 to match the temper of our reel blades and original equipment reels. Bedknives are surface ground on the top and front edge and straightened three times before being packaged with oil for rust prevention. All R&R Bedknives now have an increased front edge grind for added life. All R&R Bedknives are guaranteed against defects in material and workmanship under normal use for the life of the part.:

2	RET17534	ET17534	Bedknife - 22in Tounament- .098 Min HOC	1	
---	----------	---------	---	---	--

Detail Description: R&R Bedknives are manufactured from high carbon-boron alloy steel and then hardened to RC46-49 to match the temper of our reel blades and original equipment reels. Bedknives are surface ground on the top and front edge and straightened three times before being packaged with oil for rust prevention. All R&R Bedknives now have an increased front edge grind for added life. All R&R Bedknives are guaranteed against defects in material and workmanship under normal use for the life of the part.:

2	RMT7351	ET17489, MT7351, UC19154, UC28163	Bedknife - 22in Lo-Cut .079 Min. HOC	1	
---	---------	--	--------------------------------------	---	--

Detail Description: R&R Bedknives are manufactured from high carbon-boron alloy steel and then hardened to RC46-49 to match the temper of our reel blades and original equipment reels. Bedknives are surface ground on the top and front edge and straightened three times before being packaged with oil for rust prevention. All R&R Bedknives now have an increased front edge grind for added life. All R&R Bedknives are guaranteed against defects in material and workmanship under normal use for the life of the part.:

R&R Razor Tool Steel Bedknives, Lifetime Guaranteed

2	R130130		Bedknife - Razor Tool Steel - 22 High Cut	1	
---	---------	--	---	---	--

All original equipment manufacturers names and part numbers are used for identification purposes only, and we are in no way implying that our products are original equipment parts. Prices subject to change without notice.



Replaces John Deere 3235B Reel Mower

Parts

Medium Cutting Unit

Reel & Bedknife



Item No	R&R Part No.	OEM Part No.	Description	Qty Req	Order Quantity
---------	--------------	--------------	-------------	---------	----------------

Detail Description: R&R Razor bedknives are manufactured from premium alloy tool steel steel and then hardened to RC48-51 to match the temper of our Razor reel blades and original equipment premium series reels. Bedknives are surface ground on the top and front edge and specially packaged for rust prevention. All R&R Bedknives now have an increased front edge grind for added life. All R&R Bedknives are guaranteed against defects in material and workmanship under normal use for the life of the part. You can expect up to double the life over standard bedknives.:

2	R130116	MT4846, UC18877	Bedknife - Razor Tool Steel - 22 Tournament Cut	1	
---	----------------	--------------------	--	---	--

Detail Description: R&R Razor bedknives are manufactured from premium alloy tool steel steel and then hardened to RC48-51 to match the temper of our Razor reel blades and original equipment premium series reels. Bedknives are surface ground on the top and front edge and specially packaged for rust prevention. All R&R Bedknives now have an increased front edge grind for added life. All R&R Bedknives are guaranteed against defects in material and workmanship under normal use for the life of the part. You can expect up to double the life over standard bedknives.:

Service Tools

3	R101278T		Bedknife Screw Driver Tool	0	
---	-----------------	--	----------------------------	---	--

Tech Note: Easily install and remove bed knife screws with the help of a ratchet. Tool manufactured with hardened alloy steel.:

Detail Description: Easily install and remove bed knife screws with the help of a ratchet. Tool manufactured with hardened alloy steel.:

Other Parts Available

10	RET11070	ET11070	Spring - Bed Bar	2	
11	RMT6486	MT6486	Nut - Bed Bar Adjusting	2	
12	RET16679	ET16679	Washer - Spring	6	
13	RMT6990	MT6990	Nut - Adjusting	2	
14	R45M7060	45M7060	Pin	2	
15	RMT2694	MT2694	Bed Bar	1	
16	R101278	21M7194	Screw - Bedknife	13	

All original equipment manufacturers names and part numbers are used for identification purposes only, and we are in no way implying that our products are original equipment parts. Prices subject to change without notice.



Replaces John Deere 3235B Reel Mower

Parts

Medium Cutting Unit
Reel & Bedknife



Item No	R&R Part No.	OEM Part No.	Description	Qty Req	Order Quantity
17	RMT6483	MT6483	Nut - Adjusting Rear Roller	2	
18	R14M7296	14M7296	Nut - 10mm x 1.5 Flanged	2	
19	R24M7096	24M7096	Washer	2	
20	R19M7383	19M7383	Bolt - Rear Roller Adj 55 mm Long	2	
20	R19M7385	19M7385	Bolt - Rear Roller Adj 70mm Long	2	
21	RP250-52	T105740	Washer - 3/8 USS Flat Zinc	2	
22	R14M7517	14M7517	Locknut - 10mm x 1.5 ESNA	2	
23	RAMT5112	AMT5112	Bracket - Roller RH Rear	1	
24	RAMT5113	AMT5113	Bracket - Roller LH Rear	1	
25	RMT3016	MT3016	Bolt - Bed Bar	2	
26	RN168012	N168012	Washer - Spring	4	
27	RB30499	B30499	Bushing - Bed Bar	2	
28	R130121	AMT1415	Frame - Cutting Unit	1	
29	R14M7166	14M7166	Locknut - 8mm x 1.25 ESNA	1	
30	RMT3881	MT3881	Nut - Eccentric Front Roller Bkt	1	
31	R12M7052	12M7052	Washer - Rib Lock	1	
32	R03M7184	03M7184	Bolt - Carriage M8	3	
33	R22H1004	19H3003	Screw - Set 1/4-28 x 1/2	2	
34	R3219-1	14H860	Nut - 1/4-28	2	
35	R03M7191	03M7191	Bolt - Carriage M10 x 25	2	
36	R130123	130123	Nut - Hex 10mm x 1.0	4	

All original equipment manufacturers names and part numbers are used for identification purposes only, and we are in no way implying that our products are original equipment parts. Prices subject to change without notice.



Replaces John Deere 3235B Reel Mower Parts

Medium Cutting Unit
Reel & Bedknife



Item No	R&R Part No.	OEM Part No.	Description	Qty Req	Order Quantity
37	RMT3015	MT3015	Bracket - RH - Extended	1	
37	RMT7259	MT7259	Bracket - RH	1	
38	RMT3072	MT3072	Bracket - LH - Extended	1	
38	RMT7260	MT7260	Bracket - LH	1	
39	R03M7188	03M7188	Bolt - Carriage M8 x 40	1	
40	RH135891	H135891	Locknut - 10mm x 1.5 Flanged 10.9	2	
<i>Detail Description: High Strength:</i>					
41	RMT6476	MT6476	Counterweight	1	
42	RMT7294	MT2647, MT7294	Housing - Reel	2	
43	R170714	E14814	Fitting - Pressure Relief	2	
44	R302-5	JD7797, JD7842, JD7844	Fitting - Grease	4	
45	R19M7804	19M7804	Bolt - Flanged Hex M10-1.5 x 40	2	
46	R19M8008	19M8008	Bolt - Hex HD M8-1.25 x 35	6	
47	RR30587	30587, R30587	Pin - Dowell 1/4 Dia. x .75	4	
48	R254-79	JD8226	Cup - Bearing	2	
<i>Detail Description: Use R254-79M installation mandrel to properly install race.:</i>					
49	R254-78	JD8188	Tapered Bearing Cone	2	
50	RET14566	ET14566	Seal - Reel	2	
51	RET16704	ET16704	Retainer	1	

All original equipment manufacturers names and part numbers are used for identification purposes only, and we are in no way implying that our products are original equipment parts. Prices subject to change without notice.



Replaces John Deere 3235B Reel Mower Parts

Medium Cutting Unit
Reel & Bedknife



Item No	R&R Part No.	OEM Part No.	Description	Qty Req	Order Quantity
52	RET14592	ET14592	Spring - Reel Bearing	1	
53	RTCA12581	TCA12581	Coupling - Reel 11 Tooth	0	
54	RMT2527	MT2527	Shoe - Skid	2	
55	R130122		Clip - Hitch Pin	1	
56	RAMT2261	AMT2261	Kit - Bolt w/Clip	2	
57	RAMT1479	AMT1479	Chain - Link	1	
58	R24H1682	24H1682	Washer - 13/32 x 7/8 x 1/8	1	
59	R460028	11M7059, 460028	Pin - Cotter 1/8 x 1	1	
60	R500534		Bearing - with Cup	2	
<i>Detail Description: Kit includes: 1 ea R254-78- Bearing Cone & R254-79 Bearing Cone:</i>					
61	RAMT2495	AMT2495, AMT554	Shield - Grass	1	
62	R67-7960		Decal - Warning	2	
63	R19M7865	19M7865	Bolt - Hex Washer M8 x 16	2	
64	RH137328	H137328	Locknut	12	
65	R11M7012	11M7012	Pin - Cotter 1/8 x 5/8	2	
66	RMT3074	MT3074	Eyebolt - Bed Bar	2	
68	RMT6517	MT6517	Label - Warning	1	
69	RMT7067	MT7067	Coupling - Splined 9/11 Tooth	1	
70	RN198341	N198341	Nut - Nyloc 7/8-14	1	
71	RMT2624	MT2624	Knife - Greens Conditioner	38	
72	RET14917	ET14917	Spacer	1	

All original equipment manufacturers names and part numbers are used for identification purposes only, and we are in no way implying that our products are original equipment parts. Prices subject to change without notice.



Replaces John Deere 3235B Reel Mower Parts

*Medium Cutting Unit
Reel & Bedknife*



Item No	R&R Part No.	OEM Part No.	Description	Qty Req	Order Quantity
730	RMT2745	MT2745	Snap Ring	0	

All original equipment manufacturers names and part numbers are used for identification purposes only, and we are in no way implying that our products are original equipment parts. Prices subject to change without notice.