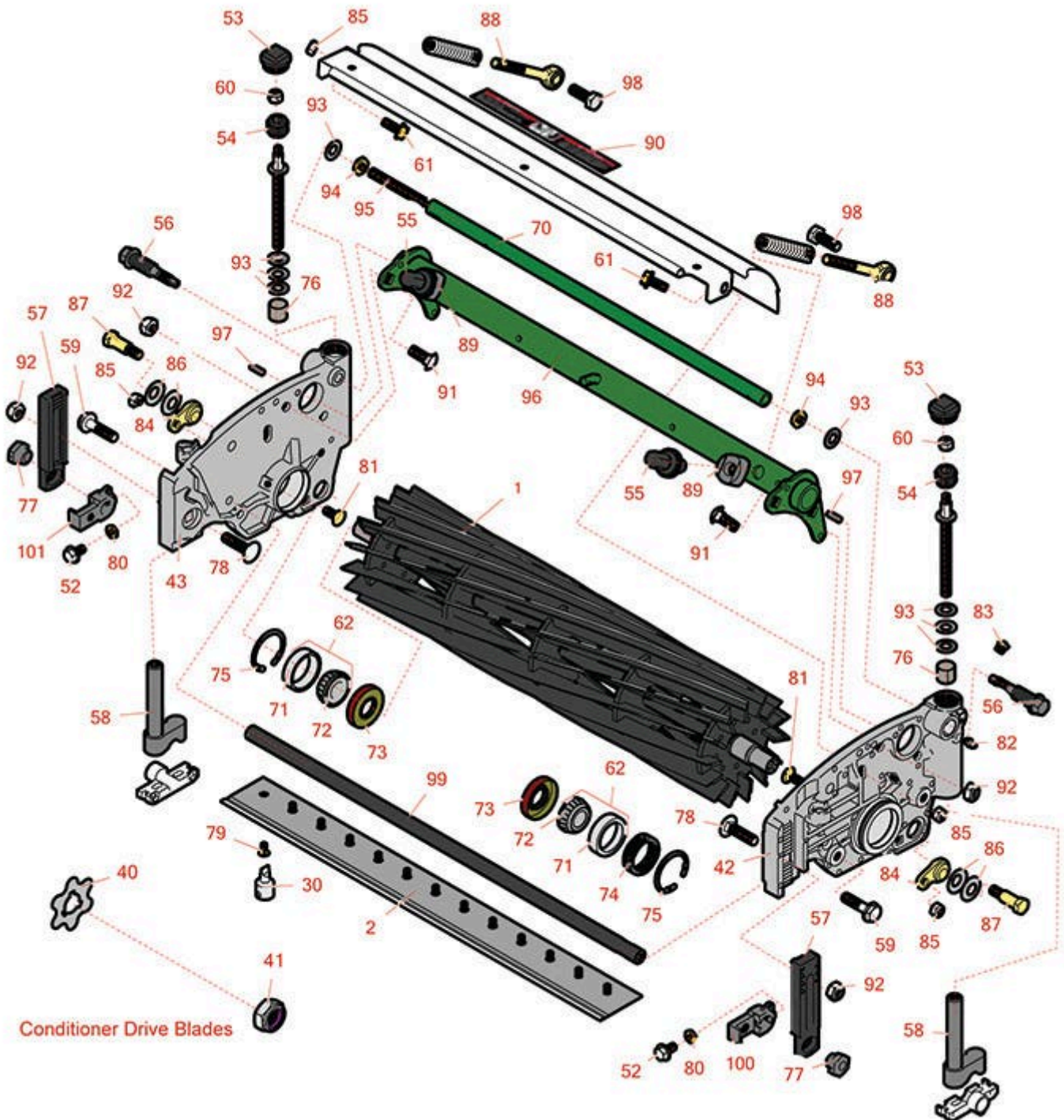




# Replaces John Deere 7500 Reel Mower Parts

Cutting Unit - Serial 020001 & Up  
Reel & Bedknife



All original equipment manufacturers names and part numbers are used for identification purposes only, and we are in no way implying that our products are original equipment parts. Prices subject to change without notice.



# Replaces John Deere 7500 Reel Mower Parts

Cutting Unit - Serial 020001 & Up  
Reel & Bedknife



Item No	R&R Part No.	OEM Part No.	Description	Qty Req	Order Quantity
---------	--------------	--------------	-------------	---------	----------------

## R&R Reels, Lifetime Guranteed

1	RTCA19350	TCA19350	Reel - 7 Blade	1	
---	-----------	----------	----------------	---	--

*Detail Description: R&R Reel blades are expertly crafted from premium high carbon-boron alloy steel, heat-treated to perfectly complement both R&R and OEM bedknives. Each reel undergoes precision cylindrical grinding on bearing surfaces, followed by relief grinding for optimal performance. Advanced computer balancing ensures extended reel and bearing life. Backed by our lifetime guarantee against defects in materials and craftsmanship under normal use, R&R Reels deliver unmatched durability and cutting precision you can trust.:*

1	RTCA19351	TCA19351	Reel - 11 Blade	1	
---	-----------	----------	-----------------	---	--

*Detail Description: R&R Reel blades are expertly crafted from premium high carbon-boron alloy steel, heat-treated to perfectly complement both R&R and OEM bedknives. Each reel undergoes precision cylindrical grinding on bearing surfaces, followed by relief grinding for optimal performance. Advanced computer balancing ensures extended reel and bearing life. Backed by our lifetime guarantee against defects in materials and craftsmanship under normal use, R&R Reels deliver unmatched durability and cutting precision you can trust.:*

1	R130250	TCA23621	Reel - 14 Blade	1	
---	---------	----------	-----------------	---	--

*Detail Description: R&R Reel blades are expertly crafted from premium high carbon-boron alloy steel, heat-treated to perfectly complement both R&R and OEM bedknives. Each reel undergoes precision cylindrical grinding on bearing surfaces, followed by relief grinding for optimal performance. Advanced computer balancing ensures extended reel and bearing life. Backed by our lifetime guarantee against defects in materials and craftsmanship under normal use, R&R Reels deliver unmatched durability and cutting precision you can trust.:*

## R&R Bedknives, Lifetime Guranteed

2	RET17767	ET17767, UC23562	Bedknife - High Cut 5/16	0	
---	----------	---------------------	--------------------------	---	--

*Detail Description: R&R Bedknives are manufactured from high carbon-boron alloy steel and then hardened to RC46-49 to match the temper of our reel blades and original equipment reels. Bedknives are surface ground on the top and front edge and straightened three times before being packaged with oil for rust prevention. All R&R Bedknives now have an increased front edge grind for added life. All R&R Bedknives are guaranteed against defects in material and workmanship under normal use for the life of the part.:*

2	RMT7351	ET17489, MT7351, UC19154, UC28163	Bedknife - 22in Lo-Cut .079 Min. HOC	1	
---	---------	--	---	---	--

All original equipment manufacturers names and part numbers are used for identification purposes only, and we are in no way implying that our products are original equipment parts. Prices subject to change without notice.



# Replaces John Deere 7500 Reel Mower Parts

Cutting Unit - Serial 020001 & Up  
Reel & Bedknife



Item No	R&R Part No.	OEM Part No.	Description	Qty Req	Order Quantity
---------	--------------	--------------	-------------	---------	----------------

*Detail Description: R&R Bedknives are manufactured from high carbon-boron alloy steel and then hardened to RC46-49 to match the temper of our reel blades and original equipment reels. Bedknives are surface ground on the top and front edge and straightened three times before being packaged with oil for rust prevention. All R&R Bedknives now have an increased front edge grind for added life. All R&R Bedknives are guaranteed against defects in material and workmanship under normal use for the life of the part.:*

2	<b>RET17533</b>	ET14402, ET17533, ET17767, MT4869, MT7351, UC18873	Bedknife - 22in Standard- .126 Min. HOC	1	
---	-----------------	---	---	---	--

*Detail Description: R&R Bedknives are manufactured from high carbon-boron alloy steel and then hardened to RC46-49 to match the temper of our reel blades and original equipment reels. Bedknives are surface ground on the top and front edge and straightened three times before being packaged with oil for rust prevention. All R&R Bedknives now have an increased front edge grind for added life. All R&R Bedknives are guaranteed against defects in material and workmanship under normal use for the life of the part.:*

2	<b>R130116</b>	MT4846, UC18877	Bedknife - Razor Tool Steel - 22 Tournament Cut	1	
---	----------------	--------------------	---	---	--

*Detail Description: R&R Razor bedknives are manufactured from premium alloy tool steel steel and then hardened to RC48-51 to match the temper of our Razor reel blades and original equipment premium series reels. Bedknives are surface ground on the top and front edge and specially packaged for rust prevention. All R&R Bedknives now have an increased front edge grind for added life. All R&R Bedknives are guaranteed against defects in material and workmanship under normal use for the life of the part. You can expect up to double the life over standard bedknives.:*

## Overhaul Kits and Tools

30	<b>R101278T</b>		Bedknife Screw Driver Tool	1	
----	-----------------	--	----------------------------	---	--

*Tech Note: Easily install and remove bed knife screws with the help of a ratchet. Tool manufactured with hardened alloy steel.:*

*Detail Description: Easily install and remove bed knife screws with the help of a ratchet. Tool manufactured with hardened alloy steel.:*

## Other Parts Available

40	<b>RMT2624</b>	MT2624	Knife - Greens Conditioner	38	
----	----------------	--------	----------------------------	----	--

All original equipment manufacturers names and part numbers are used for identification purposes only, and we are in no way implying that our products are original equipment parts. Prices subject to change without notice.



# Replaces John Deere 7500 Reel Mower Parts

Cutting Unit - Serial 020001 & Up  
Reel & Bedknife



Item No	R&R Part No.	OEM Part No.	Description	Qty Req	Order Quantity
41	<b>RN198341</b>	N198341	Nut - Nyloc 7/8-14	1	
42	<b>RTC35637</b>	TCU24427, TCU35637	Panel - LH	1	
43	<b>RTC35638</b>	TCU24426, TCU35638	Panel - RH	1	
52	<b>R33114-016</b>	19M7162	Bolt - Hx HD 8mm x 1.25 x 15	2	
53	<b>RUC16102</b>	TCU24949, UC16102	Cap	2	
54	<b>RTC40491</b>	TCU24683, TCU40491	Worm Gear	2	
55	<b>RUC16137</b>	TCU24955, UC16137	Adjuster	2	
56	<b>RTC26458</b>	TCU26458	Worm Gear	2	
57	<b>RUC16108</b>	TCU24460, UC16108	Bracket	2	
58	<b>RAUC13512</b>	AUC13512, TCA18706	Adjuster	2	
59	<b>R19M7804</b>	19M7804	Bolt - Flanged Hex M10-1.5 x 40	4	
60	<b>RM148268</b>	M148268	Lock Nut	2	
61	<b>R19M7866</b>	19M7866	Bolt - Flanged Hex M8-1.25 x 20	2	
62	<b>R500534</b>		Bearing - with Cup	2	
<i>Detail Description: Kit includes: 1 ea R254-78- Bearing Cone &amp; R254-79 Bearing Cone:</i>					
70	<b>RTC26729</b>	TCU26729	Tube	1	
71	<b>R254-79</b>	JD8226	Cup - Bearing	2	

*Detail Description: Use R254-79M installation mandrel to properly install race.:*

All original equipment manufacturers names and part numbers are used for identification purposes only, and we are in no way implying that our products are original equipment parts. Prices subject to change without notice.



# Replaces John Deere 7500 Reel Mower Parts

Cutting Unit - Serial 020001 & Up  
Reel & Bedknife



Item No	R&R Part No.	OEM Part No.	Description	Qty Req	Order Quantity
72	<b>R254-78</b>	JD8188	Tapered Bearing Cone	2	
73	<b>RET14566</b>	ET14566	Seal - Reel	2	
74	<b>RTC23880</b>	TCU23880, TCU28964	Compression Spring - Reel Bearing	1	
75	<b>R40M7226</b>	40M1862, 40M7226	Ring - Retaining	2	
76	<b>RMT74</b>	MT74	Bushing - Roller Bkt	2	
77	<b>RTC28635</b>	TCU24555, TCU28635	Eccentric	2	
78	<b>R03M7194</b>	03M7194	Bolt	2	
79	<b>R101278</b>	21M7194	Screw - Bedknife	13	
80	<b>R14M7151</b>	14M7151	Nut - Jam Roller Adj	2	
81	<b>R03M7184</b>	03M7184	Bolt - Carriage M8	2	
82	<b>R302-5</b>	JD7797, JD7842, JD7844	Fitting - Grease	2	
83	<b>R170714</b>	E14814	Fitting - Pressure Relief	2	
84	<b>RTC24334</b>	TCU24334	Retainer	2	
85	<b>RH137328</b>	H137328	Locknut	2	
86	<b>RN168012</b>	N168012	Washer - Spring	4	
87	<b>RMT3016</b>	MT3016	Bolt - Bed Bar	2	
88	<b>RTC25223</b>	TCU25223, TCU30798	Spherical Rod End	2	
89	<b>RTC25394</b>	TCU25394, TCU27453	Base	2	

All original equipment manufacturers names and part numbers are used for identification purposes only, and we are in no way implying that our products are original equipment parts. Prices subject to change without notice.



# Replaces John Deere 7500 Reel Mower Parts

*Cutting Unit - Serial 020001 & Up  
Reel & Bedknife*



Item No	R&R Part No.	OEM Part No.	Description	Qty Req	Order Quantity
90	<b>RMT6517</b>	MT6517	Label - Warning	1	
91	<b>R03M7191</b>	03M7191	Bolt - Carriage M10 x 25	4	
92	<b>R14M7517</b>	14M7517	Locknut - 10mm x 1.5 ESNA	4	
93	<b>RET16679</b>	ET16679	Washer - Spring	8	
94	<b>R14M7152</b>	14M7152	Nut - 10mm x 1.5 Jam	2	
95	<b>RTC25398</b>	TCU25398	Compression Spring	1	
96	<b>RAUC13891</b>	AUC13891, TCA18291	Frame	1	
97	<b>RR30587</b>	30587, R30587	Pin - Dowell 1/4 Dia. x .75	4	
98	<b>R19M7168</b>	19M7168	Bolt - M10-1.5 x 30 mm Hex Head Class 8.8	2	
99	<b>RUC13425</b>	UC13425	Rod - Hardened	1	
100	<b>RUC16109</b>	TCU24461, UC16109	Bracket - RH	1	
101	<b>RUC18211</b>	TCU24461, UC18211	Bracket - LH	1	

All original equipment manufacturers names and part numbers are used for identification purposes only, and we are in no way implying that our products are original equipment parts. Prices subject to change without notice.