

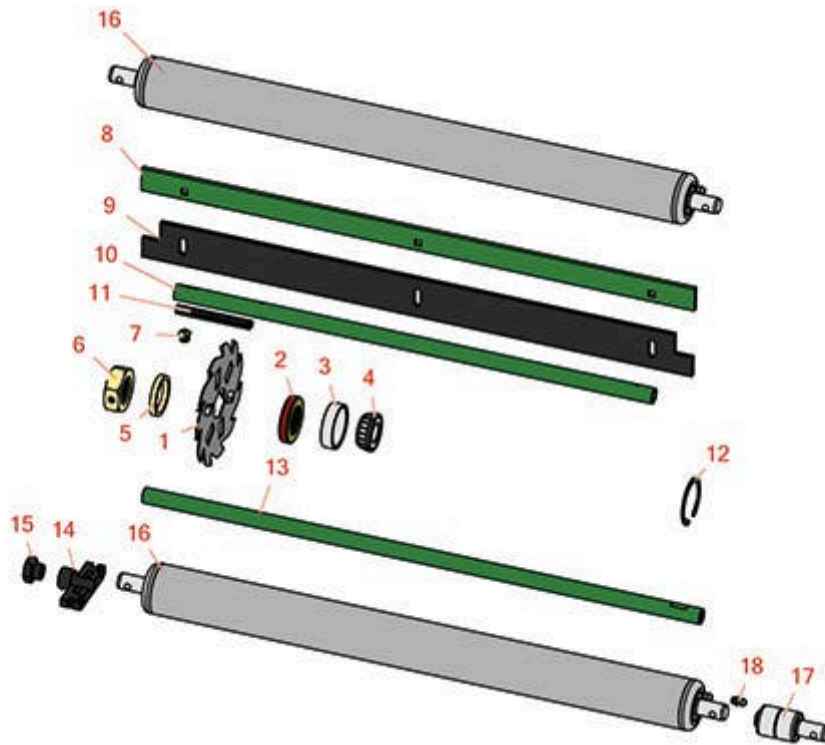
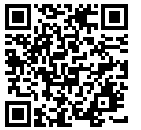


Replaces John Deere 7500A Reel Mower

Parts

Verti-Cut Unit

Verti-Cut Reel & Frame



All original equipment manufacturers names and part numbers are used for identification purposes only, and we are in no way implying that our products are original equipment parts. Prices subject to change without notice.



Replaces John Deere 7500A Reel Mower

Parts

Verti-Cut Unit

Verti-Cut Reel & Frame



Item No	R&R Part No.	OEM Part No.	Description	Qty Req	Order Quantity
1	R150109C		Verti-Cut Blade - Carbide Tipped 1.2mm	27	
1	R150209C	TCU26776	Verti-Cut Blade - Carbide Tipped 2mm	27	
2	RET14566	ET14566	Seal - Reel	2	
3	R254-79	JD8226	Cup - Bearing	2	
<i>Tech Note: Use R254-79M installation mandrel to properly install race.:</i>					
4	R254-78	JD8188	Tapered Bearing Cone	2	
5	RET17713	ET17713	Spacer - Vertical Mower Shaft	78	
6	RET17053	ET17053	Nut - 1-1/8-7 Jam Incl Set Screw	2	
7	R170714	E14814	Fitting - Pressure Relief	2	
8	RAMT2704	AMT2704, MT169	Strap - Verticut Shield	1	
9	RET17914	ET17914	Rubber Isolator - Verticut	1	
10	RTC26729	TCU26729	Tube	1	
11	RTC25398	TCU25398	Compression Spring	1	
12	R40M7226	40M1862, 40M7226	Ring - Retaining	2	
13	RTC26727	TCU26727	Rod	1	
14	RTC28987	TCU28987	Half Clamp - Roller Bkt	2	
15	RTC28635	TCU24555, TCU28635	Eccentric	2	
16	RAET10111	AET10111, AMT2876	Roller - Smooth Tubular Steel	2	

Tech Note: This tubular steel roller uses greasable "water-pump" style bearings.:

All original equipment manufacturers names and part numbers are used for identification purposes only, and we are in no way implying that our products are original equipment parts. Prices subject to change without notice.

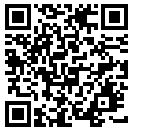


Replaces John Deere 7500A Reel Mower

Parts

Verti-Cut Unit

Verti-Cut Reel & Frame



Item No	R&R Part No.	OEM Part No.	Description	Qty Req	Order Quantity
16	RAMT1442	AMT1442, AMT2878	Roller - Smooth Solid Steel	2	
<i>Tech Note: Machined from solid steel, this heavy weight roller uses greasable "water-pump" style bearings.:</i>					
17	RAA35741	AA35741, AET10129, TCA22836	Bearing	4	
<i>Tech Note: 1/4" Side Hole:</i>					
18	R302-5	JD7797, JD7842, JD7844	Fitting - Grease	4	

All original equipment manufacturers names and part numbers are used for identification purposes only, and we are in no way implying that our products are original equipment parts. Prices subject to change without notice.