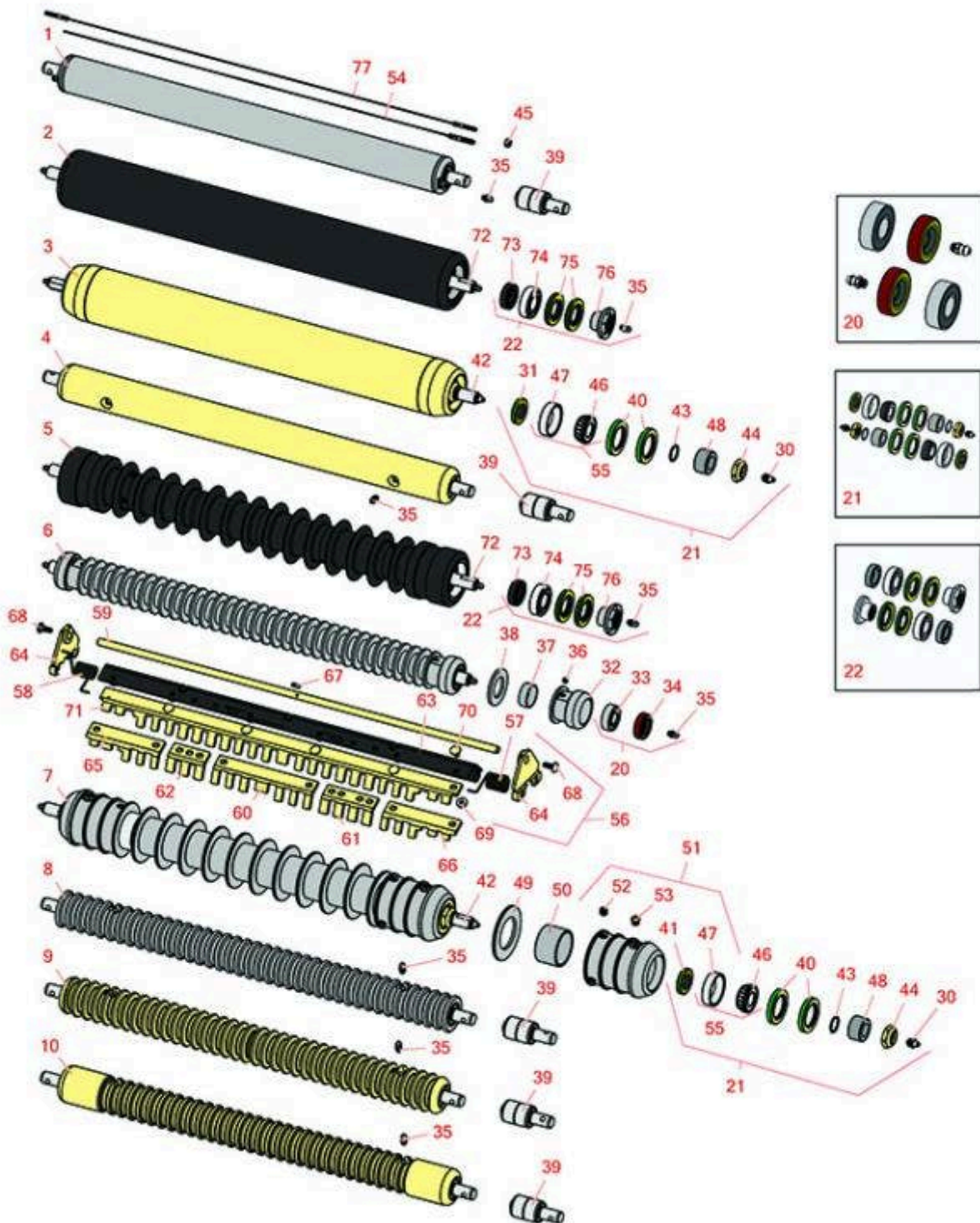




# Replaces John Deere 8500 E-Cut Hybrid Reel Mower Parts

Cutting Unit  
Rollers



All original equipment manufacturers names and part numbers are used for identification purposes only, and we are in no way implying that our products are original equipment parts. Prices subject to change without notice.



# Replaces John Deere 8500 E-Cut Hybrid Reel Mower Parts

Cutting Unit  
Rollers



| Item No  | R&R Part No.     | OEM Part No.         | Description                               | Qty Req | Order Quantity |
|--|------------------|----------------------|---|---------|----------------|
| <b>R&amp;R Rollers</b>   |                  |                      |   |         |                |
| 1  | <b>RAET10111</b> | AET10111,<br>AMT2876 | Roller - Smooth Tubular Steel             | 0       |                |
| <i>Tech Note: This tubular steel roller uses greasable "water-pump" style bearings.:</i>   |                  |                      |   |         |                |
| 2  | <b>R1203825</b>  |                      | Roller - Fusion Smooth UHMW Polyethylene  | 0       |                |
| <i>Tech Note: Fusion Rollers combine the best features of our UHMW plastic rollers with a heavy-duty internal bearing system. Machined from solid UHMW plastic that prevents build-up of debris. This roller turns on precision stainless ball bear... &lt;Click Part# for more&gt;:</i> |                  |                      |   |         |                |
| 3  | <b>RAET11263</b> | AET11263,<br>AMT2967 | Roller - Smooth Tubular Steel             | 0       |                |
| <i>Tech Note: Constructed with a through shaft, this heavy duty roller uses greasable tapered bearings for extended life.:</i>   |                  |                      |   |         |                |
| 4  | <b>RAMT1442</b>  | AMT1442,<br>AMT2878  | Roller - Smooth Solid Steel               | 0       |                |
| <i>Tech Note: Machined from solid steel, this heavy weight roller uses greasable "water-pump" style bearings.:</i>   |                  |                      |   |         |                |
| 5  | <b>R1203820</b>  | 1203752              | Roller - Fusion Grooved UHMW Polyethylene | 0       |                |
| <i>Tech Note: Fusion Rollers combine the best features of our UHMW plastic rollers with a heavy-duty internal bearing system. Machined from solid UHMW plastic that prevents build-up of debris. This roller has a patented deep groove design and ... &lt;Click Part# for more&gt;:</i> |                  |                      |   |         |                |
| 6  | <b>R68527R</b>   |                      | Roller - Grooved Repairable Steel         | 0       |                |
| <i>Tech Note: Constructed with a through shaft and greasable ball bearings, this roller can be repaired by unscrewing the ends and replacing the series of washers and spacers.:</i>   |                  |                      |   |         |                |
| 7  | <b>R500512</b>   | AMT2966,<br>BM25317  | Roller - Grooved Repairable Steel         | 0       |                |
| <i>Tech Note: Constructed with a through shaft and greasable ball bearings. This roller can be repaired by unscrewing the ends and replacing the series of washers and spacers.:</i>   |                  |                      |   |         |                |

All original equipment manufacturers names and part numbers are used for identification purposes only, and we are in no way implying that our products are original equipment parts. Prices subject to change without notice.



# Replaces John Deere 8500 E-Cut Hybrid Reel Mower Parts

Cutting Unit  
Rollers



| Item No   | R&R Part No.     | OEM Part No.                     | Description                           | Qty Req | Order Quantity |
|---|------------------|----------------------------------|---------------------------------------|---------|----------------|
| 8   | <b>RAMT1061</b>  | AET10557,<br>AMT1061,<br>AMT2877 | Roller - Grooved Machined Solid Steel | 0       |                |
| <i>Tech Note: Machined from solid steel, this heavy weight roller uses greasable "water-pump" style bearings.:</i>  |                  |                                  |                                       |         |                |
| 9   | <b>RAET10954</b> | AET10954,<br>AMT2875,<br>AMT2879 | Roller - Grooved Machined Solid Steel | 0       |                |
| <i>Tech Note: Machined from solid steel, this heavy weight roller uses greasable "water-pump" style bearings.:</i>  |                  |                                  |                                       |         |                |
| 10  | <b>RAMT1443</b>  | AMT1443,<br>AMT2879              | Roller - Grooved Machined Solid Steel | 0       |                |
| <i>Tech Note: Machined from solid steel, this heavy weight roller uses greasable "water-pump" style bearings. Extended length body.:</i>  |                  |                                  |                                       |         |                |
| <b>Overhaul Kits</b>  |                  |                                  |                                       |         |                |
| 20  | <b>R100130</b>   |                                  | Overhaul Kit - Roller                 | 0       |                |
| <i>Tech Note: Includes 2 ea.: R302-5 Grease Fittings, R303558 Bearings, &amp; R305115 Seals:</i>  |                  |                                  |                                       |         |                |
| 21  | <b>RAET10632</b> | AET10632                         | Overhaul Kit - Roller                 | 0       |                |
| <i>Tech Note: Includes 4 ea: RET15755 Seal; 2 ea: R237-54 O-Ring, R253-122 Seal, R254-78 Bearing, R254-79 Cup, R3296-15 Locknut, R471219 Grease Zerk, RET15726 Sleeve, RET15756 Seal:</i> |                  |                                  |                                       |         |                |
| 22  | <b>R114-5430</b> |                                  | Overhaul Kit - Roller                 | 0       |                |
| <i>Tech Note: Includes 4 ea.: R112-7494 Seals; 2 ea.: R302-5 Grease Zerks, R114-3717 Seals, R112-5290 Bearings &amp; R114-3745 Locknuts:</i>  |                  |                                  |                                       |         |                |
| <b>Other Parts Available</b>  |                  |                                  |                                       |         |                |
| 30  | <b>R471219</b>   | 471219,<br>JD7759,<br>JD7798     | Zerk - Grease                         | 2       |                |
| 31  | <b>RET15756</b>  | ET15756,<br>MT1739,<br>MT739     | Seal                                  | 2       |                |

All original equipment manufacturers names and part numbers are used for identification purposes only, and we are in no way implying that our products are original equipment parts. Prices subject to change without notice.



# Replaces John Deere 8500 E-Cut Hybrid Reel Mower Parts

Cutting Unit  
Rollers



| Item No  | R&R Part No. | OEM Part No.                      | Description                | Qty Req | Order Quantity |
|--|--------------|-----------------------------------|----------------------------|---------|----------------|
| 32   | R150650      |                                   | Roller End - 2 Repairable  | 2       |                |
| 33   | R303558      | ET15220                           | Bearing - Roller           | 2       |                |
| 34   | R305115      | ET15219                           | Seal - Roller              | 2       |                |
| 35   | R302-5       | JD7797,<br>JD7842,<br>JD7844      | Fitting - Grease           | 2       |                |
| 36   | R150690      |                                   | Screw - Set 1/4-20 x 1/4   | 4       |                |
| 37   | R150651      |                                   | Spacer - 2-3/8 Roller      | 34      |                |
| 38   | R150653      |                                   | Washer - 2-3/8 Roller      | 33      |                |
| 39   | RAA35741     | AA35741,<br>AET10129,<br>TCA22836 | Bearing                    | 2       |                |
| <i>Tech Note: 1/4" Side Hole:</i>  |              |                                   |                            |         |                |
| 40   | RET15755     | ET15755                           | Seal - Oil                 | 4       |                |
| 41   | R253-122     | 253-122                           | Seal                       | 2       |                |
| 42   | RET17515     | ET17515                           | Shaft - Roller             | 1       |                |
| 43   | R237-54      | U46731,<br>U6731                  | O-Ring - Small             | 2       |                |
| 44   | R3296-15     | N101345                           | Locknut - 3/4-16 Nylon Jam | 2       |                |
| 45   | RU45916      | 14M7298,<br>U45916                | Locknut - 10-24 ESNA       | 2       |                |
| 46   | R254-78      | JD8188                            | Tapered Bearing Cone       | 2       |                |
| 47   | R254-79      | JD8226                            | Cup - Bearing              | 2       |                |
| <i>Tech Note: Use R254-79M installation mandrel to properly install race.:</i> |              |                                   |                            |         |                |
| 48   | RET15726     | ET15726,<br>RET15726              | Sleeve - Wear Hardened     | 2       |                |

All original equipment manufacturers names and part numbers are used for identification purposes only, and we are in no way implying that our products are original equipment parts. Prices subject to change without notice.



# Replaces John Deere 8500 E-Cut Hybrid Reel Mower Parts

Cutting Unit  
Rollers



| Item No  | R&R Part No.     | OEM Part No.        | Description                       | Qty Req | Order Quantity |
|--|------------------|---------------------|-----------------------------------|---------|----------------|
| 49   | <b>R150673</b>   |                     | Washer - 3 Repairable Roller      | 11      |                |
| 50   | <b>R150676</b>   |                     | Spacer - 2-3/4 Dia x 1-1/4 L      | 10      |                |
| 51   | <b>R500511</b>   |                     | Roller End - Threaded 3           | 2       |                |
| 52   | <b>R150691</b>   |                     | Screw - Set Nyloc 3/8-16 x 3/8    | 4       |                |
| 53   | <b>R170714</b>   | E14814              | Fitting - Pressure Relief         | 2       |                |
| 54   | <b>RAET10139</b> | AET10139            | Cable - Roller Scraper            | 1       |                |
| 54   | <b>RTCA19566</b> | TCA19566            | Cable - Smooth Roller Scraper     | 1       |                |
| 55   | <b>R500534</b>   |                     | Bearing - with Cup                | 2       |                |
| 56   | <b>R500559</b>   | BM18680,<br>MT18680 | Scraper Kit - Grooved Roller      | 1       |                |
| <i>Tech Note: Fits John Deere AET11262 &amp; AMT2966 Grooved Roller Only:</i>  |                  |                     |                                   |         |                |
| 56   | <b>R500573</b>   |                     | Scraper Kit - SET/5               | 1       |                |
| <i>Tech Note: Fits R&amp;R R500512 Roller Only &amp; Incl R500572 Scraper:</i> |                  |                     |                                   |         |                |
| 57   | <b>RET17629</b>  | ET17629             | Spring - Torsion LH               | 1       |                |
| 58   | <b>RET17630</b>  | ET17630             | Spring - Torsion RH               | 1       |                |
| 59   | <b>RET17757</b>  | ET11757,<br>ET17757 | Pin - Scraper                     | 1       |                |
| 60   | <b>RMT2340</b>   | MT2340              | Scraper - Fits J.D. Center        | 1       |                |
| 61   | <b>RMT2341</b>   | MT2341              | Section - Grooved Scraper 4 Tooth | 1       |                |
| 62   | <b>RMT2342</b>   | MT2342              | Section - Grooved Scraper 3 Tooth | 1       |                |
| 63   | <b>R500571</b>   | MT2369              | Bar - Scraper                     | 1       |                |
| 64   | <b>RMT2407</b>   | MT2407              | Bracket - Roller Scraper          | 2       |                |
| 65   | <b>RMT5158</b>   | MT5158              | Scraper - Fits J.D. RH End        | 1       |                |

All original equipment manufacturers names and part numbers are used for identification purposes only, and we are in no way implying that our products are original equipment parts. Prices subject to change without notice.



# Replaces John Deere 8500 E-Cut Hybrid Reel Mower Parts

Cutting Unit  
Rollers



| Item No   | R&R Part No.     | OEM Part No. | Description                   | Qty Req | Order Quantity |
|---|------------------|--------------|-------------------------------|---------|----------------|
| 66  | <b>RMT5159</b>   | MT5159       | Scraper - Fits J.D. LH End    | 1       |                |
| 67  | <b>R34M7010</b>  | 34M7010      | Pin - Spring                  | 1       |                |
| 68  | <b>R03M7221</b>  | 03M7221      | Bolt - Carriage M6 x 16       | 14      |                |
| 69  | <b>R14M7303</b>  | 14M7303      | Nut - 6mm x 1.0 Flanged       | 14      |                |
| 70  | <b>R03M7251</b>  | 03M7251      | Bolt - Gr. Roller Scraper     | 2       |                |
| 71  | <b>R500558</b>   |              | Scraper - Grooved Roller      | 1       |                |
| <i>Tech Note: 1 Piece Scraper fits OEM AET11262 &amp; AMT2966 Grooved Roller:</i> |                  |              |                               |         |                |
| 71  | <b>R500572</b>   |              | Scraper - Fits R500512 Only   | 1       |                |
| 72  | <b>R1203821</b>  |              | Shaft - Fusion Roller         | 1       |                |
| 73  | <b>R114-3717</b> |              | Seal                          | 2       |                |
| 74  | <b>R112-5290</b> |              | Bearing - Stainless           | 2       |                |
| 75  | <b>R112-7494</b> |              | Seal                          | 4       |                |
| 76  | <b>R114-3745</b> |              | Locknut - Bearing - Stainless | 2       |                |

All original equipment manufacturers names and part numbers are used for identification purposes only, and we are in no way implying that our products are original equipment parts. Prices subject to change without notice.