

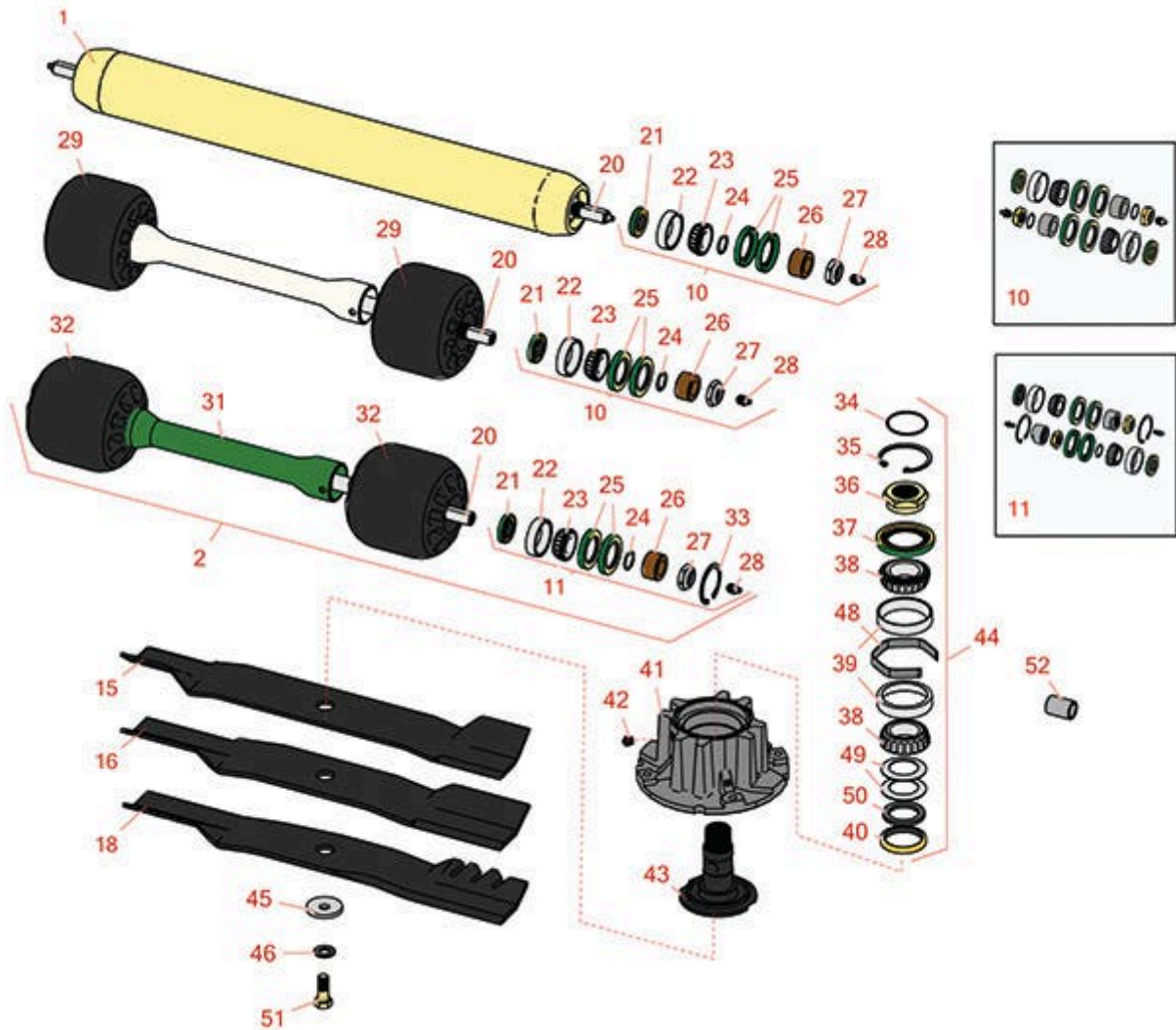


Replaces John Deere 8800A Rotary

Mower Parts

Rotary Cutting Unit

Rotary Cutting Unit



All original equipment manufacturers names and part numbers are used for identification purposes only, and we are in no way implying that our products are original equipment parts. Prices subject to change without notice.



Replaces John Deere 8800A Rotary

Mower Parts

Rotary Cutting Unit

Rotary Cutting Unit



Item No	R&R Part No.	OEM Part No.	Description	Qty Req	Order Quantity
---------	--------------	--------------	-------------	---------	----------------

R&R Rollers

1	RTCA16183	TCA16183	Roller - Rear - Solid - HD Steel	5	
2	RTCA26180	TCA19028, TCA26180	Roller Assy	5	

Overhaul Kits

10	RAET10632	AET10632	Overhaul Kit - Roller	5	
<i>Tech Note: Includes 4 ea: RET15755 Seal; 2 ea: R237-54 O-Ring, R253-122 Seal, R254-78 Bearing, R254-79 Cup, R3296-15 Locknut, R471219 Grease Zerk, RET15726 Sleeve, RET15756 Seal:</i>					
11	R500578		Overhaul Kit - Roller	5	

Rotary Blades

15	R500581	TCU32775	Mower Blade - 20.75 in High Lift w/Hard Facing	5	
<i>Tech Note: Heavy Duty .203" x 3" Blade with hard faced edges for added wear:</i>					
16	R500582	TCU32776	Mower Blade - 20.75 in Med Lift w/Hard Facing	5	
<i>Tech Note: Heavy Duty 1/4" x 3" Blade with hard faced edges for added wear:</i>					
18	R500584	TCU32778	Mower Blade - 20.75 Mulcher w/Hard Facing	5	
<i>Tech Note: Heavy Duty 1/4" x 3" Mulcher Blade with hard faced edges for added wear:</i>					

Other Parts Available

20	RTC20818	TCU20818	Shaft - Roller	10	
21	RET15756	ET15756, MT1739, MT739	Seal	20	
22	R254-79	JD8226	Cup - Bearing	20	

Tech Note: Use R254-79M installation mandrel to properly install race.:

All original equipment manufacturers names and part numbers are used for identification purposes only, and we are in no way implying that our products are original equipment parts. Prices subject to change without notice.



Replaces John Deere 8800A Rotary

Mower Parts

Rotary Cutting Unit

Rotary Cutting Unit



Item No	R&R Part No.	OEM Part No.	Description	Qty Req	Order Quantity
23	R254-78	JD8188	Tapered Bearing Cone	20	
24	R237-54	U46731, U6731	O-Ring - Small	20	
25	RET15755	ET15755	Seal - Oil	40	
26	RET15726	ET15726, RET15726	Sleeve - Wear Hardened	20	
27	R3296-15	N101345	Locknut - 3/4-16 Nylon Jam	20	
28	R471219	471219, JD7759, JD7798	Zerk - Grease	20	
29	RTCUC25955	TCU25955	Roller - Front Gauge	10	
31	RTCA26181	TCA19375, TCA26181	Spacer - Axle	5	
32	RTCUC38614	TCU38614	Roller - Front Gauge	10	
33	R40M1863	40M1863	Ring - Snap	10	
34	RH142234	H142234	O - Ring	5	
35	R32120-2	M42702	Ring - Retaining	5	
36	RTCUC27862	TCU27862	Nut - Spindle	5	
37	RTCUC32975	TCU32975	Seal	5	
38	RJD8194	JD8194	Tapered Bearing Cone	10	
39	RJD8230	JD8230	Tapered Bearing Cup	10	
40	RTCUC32974	TCU32974	Seal	5	
41	RTCUC32112	TCU32112	Housing - Spindle	5	
42	R170714	E14814	Fitting - Pressure Relief	5	

All original equipment manufacturers names and part numbers are used for identification purposes only, and we are in no way implying that our products are original equipment parts. Prices subject to change without notice.



Replaces John Deere 8800A Rotary

Mower Parts

Rotary Cutting Unit

Rotary Cutting Unit



Item No	R&R Part No.	OEM Part No.	Description	Qty Req	Order Quantity
43	RTC39253	TCU32113, TCU39253	Spindle - Blade	5	
44	RTCA25685	TCA25685	Spindle Assy	5	
45	RM147138	M147138	Washer - Belville	5	
46	RTC27937	TCU27937	Washer - Anti Friction	5	
48	RTC32114	TCU32114	Spacer - Spindle	5	
49	RUC10061	RUC10061, UC10061	Disk Spring	10	
50	RUC10057	RUC10057, SU303558, UC10057	Thrust Washer - Hardened	5	
51	RTC28104	TCU28104	Bolt - Blade 10.9 Hardness	5	
52	RTC27014	TCU27014	Bushing	20	

All original equipment manufacturers names and part numbers are used for identification purposes only, and we are in no way implying that our products are original equipment parts. Prices subject to change without notice.