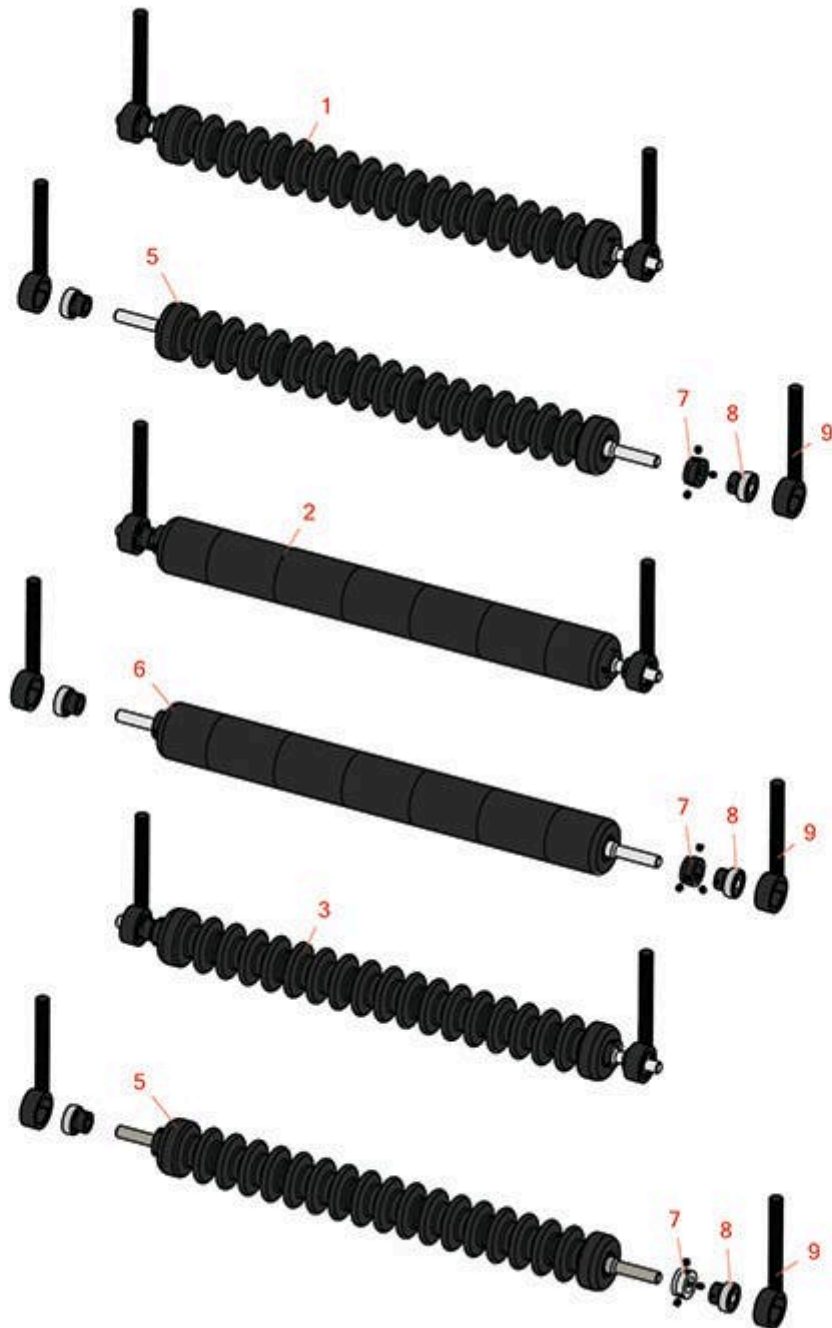




Replaces Ransomes 185, 285, 300, 305 & 405 Parts

Cutting Unit
Minuteman Roller System



All original equipment manufacturers names and part numbers are used for identification purposes only, and we are in no way implying that our products are original equipment parts. Prices subject to change without notice.



Replaces Ransomes 185, 285, 300, 305 & 405 Parts

Cutting Unit

Minuteman Roller System



Item No	R&R Part No.	OEM Part No.	Description	Qty Req	Order Quantity
---------	--------------	--------------	-------------	---------	----------------

Complete Minuteman Roller Systems

1	RMR3001	MR3001	Minuteman Front Grooved Roller System	0	
<i>Detail Description: Complete roller systems include roller and two brackets with bearings.:</i>					
2	RMR3003	MR3003	Minuteman Rear Smooth Roller System	0	
<i>Detail Description: Complete roller systems include roller and two brackets with bearings.:</i>					
3	RMR3002	MR3002	Minuteman Rear Grooved Roller System	0	
<i>Detail Description: Complete roller systems include roller and two brackets with bearings.:</i>					

Minuteman Rollers Only

5	RM524	M524	Minuteman Grooved Roller Only	0	
<i>Detail Description: Use with Minuteman Roller Bracket System Only:</i>					
6	RM525	M525	Minuteman Smooth Roller Only	0	
<i>Detail Description: Use with Minuteman Roller Bracket System Only:</i>					

Other Parts Available

7	RMM3	MM3	End Hub - 7/8 ID	0	
8	RMMB157	MMB157	Bearing w/Locking Collar	0	
9	RR118	R118	Bracket - Front/Rear 18mm	0	

All original equipment manufacturers names and part numbers are used for identification purposes only, and we are in no way implying that our products are original equipment parts. Prices subject to change without notice.