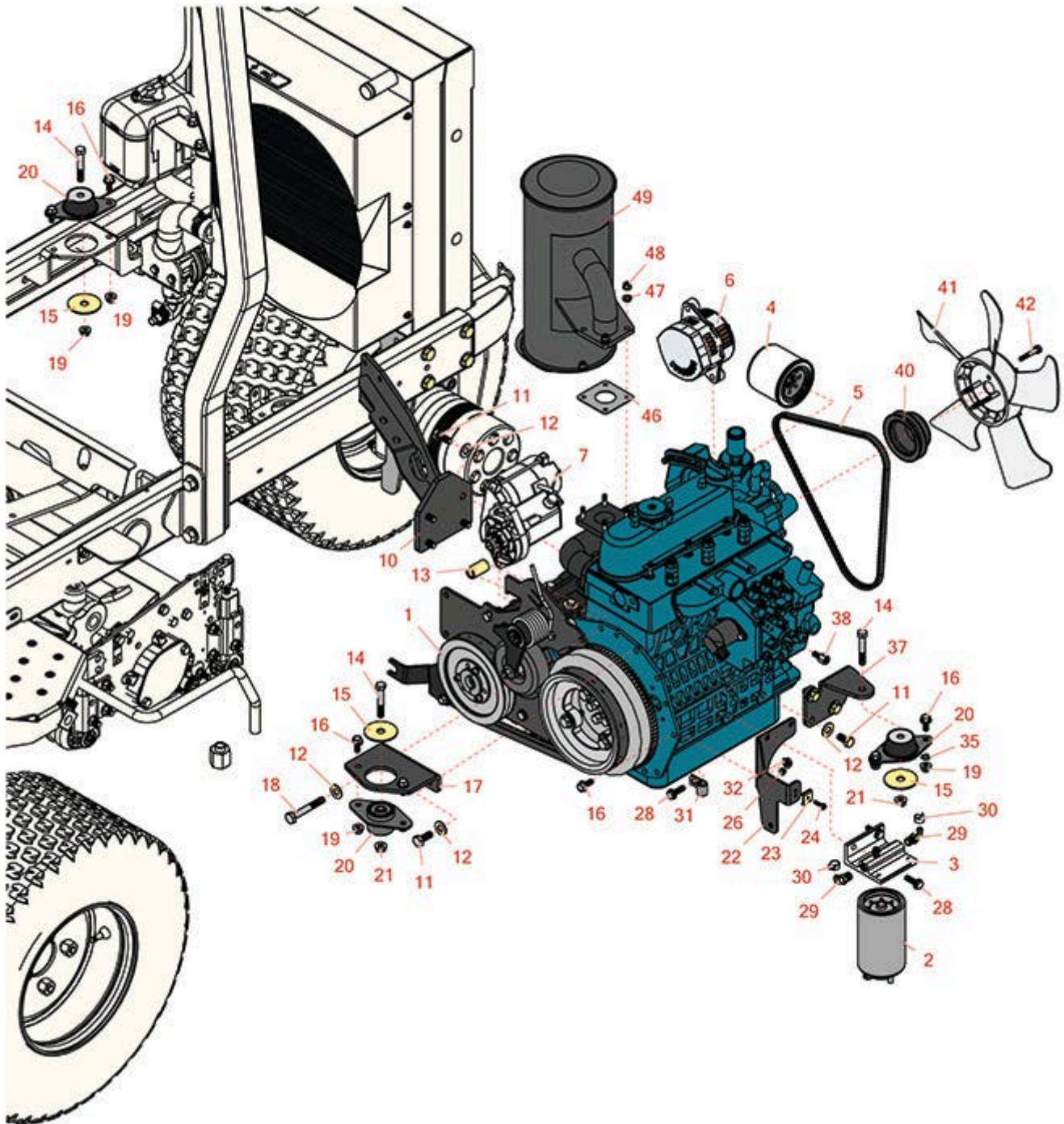




Replaces R&R Products Reel Max 331D

Parts

*Traction Unit
Engine*



All original equipment manufacturers names and part numbers are used for identification purposes only, and we are in no way implying that our products are original equipment parts. Prices subject to change without notice.



Replaces R&R Products Reel Max 331D

Parts

Traction Unit
Engine



Item No	R&R Part No.	OEM Part No.	Description	Qty Req	Order Quantity
---------	--------------	--------------	-------------	---------	----------------

Engine

1	RX1J99500000	R104-4899, R107-7830, R112-9906	Kubota Engine D1105 E	1	
---	---------------------	---------------------------------------	-----------------------	---	--

Detail Description: Quality and dependability drive Kubota's name recognition as the market leader and describes Kubota's out-of-the-box reputation and field history. Kubota's engineers ensure that the technical integrity and engine quality are met and maintained to Kubota's standards. This is the Kubota way.:

Filters

2	R110-9049		Donaldson Fuel Filter - Spin On	1	
---	------------------	--	---------------------------------	---	--

2	RRF10515		SilverGuard Fuel Filter	1	
---	-----------------	--	-------------------------	---	--

3	R110-9044		Donaldson Water/Fuel Seperator Assy	1	
---	------------------	--	----------------------------------------	---	--

4	RRF10625		SilverGuard Oil Filter	1	
---	-----------------	--	------------------------	---	--

4	RX7000074034	R888921, R99-8384, RX1524132090, RX1524132099	Kubota Oil Filter	1	
---	---------------------	--------------------------------------------------------	-------------------	---	--

Belts

5	RX1624197010	R130-1241, R99-3467	V-Belt - Fan - Bestorq	1	
---	---------------------	------------------------	------------------------	---	--

Gauges and Controls

6	RX1624164012	RX1624164010	Kubota Alternator - Assy 40A	1	
---	---------------------	--------------	------------------------------	---	--

7	RX3756063010	R557888, R98-9705, RX1661263010, RX1661463010	Kubota Starter	1	
---	---------------------	--------------------------------------------------------	----------------	---	--

Other Parts Available

10	R100-4838-03		Mount-Engine	1	
----	---------------------	--	--------------	---	--

All original equipment manufacturers names and part numbers are used for identification purposes only, and we are in no way implying that our products are original equipment parts. Prices subject to change without notice.



Replaces R&R Products Reel Max 331D

Parts

*Traction Unit
Engine*



Item No	R&R Part No.	OEM Part No.	Description	Qty Req	Order Quantity
11	R43-0090		Bolt - 10mm x 1.25 x 25 Hex HD	5	
12	R80-6990		Washer - Hardened	10	
13	R95-8736		Spacer	1	
14	R323-11	R01-150-1440, R01-178-0618, R20-52-AD, R3224-7	Bolt - 3/8-16 x 2 1/4 GR5	3	
15	R80-8560		Washer - Hardened	3	
16	R3234-5	R62-3310	Bolt - 5/16-18x3/4 Hx Ser Was HD	7	
17	R95-8926-03	R95-8926	Mount - Engine - Front	1	
18	R42-9370		Bolt - Hex HD 10mm x 70mm	1	
19	R445722	R30-8980, R32128-2, R32128-20	Nut - Serrated Washer	6	
20	R83-1030	R108-6879, R121-9076, R83-1031, RZS484148	Mount - Engine	1	
21	R3296-39	3296-39, R32127-25, R32128-36, R3296-17, R3296-22, R915663P, R99-7443	Locknut - 3/8-16 Nylon	3	
22	R100-4867-03		Support - Throttle	1	
23	R81-1690		Clamp - Cable	1	
24	R32105-13		Screw - Hx Was HD 10-32 x 3/4	1	

All original equipment manufacturers names and part numbers are used for identification purposes only, and we are in no way implying that our products are original equipment parts. Prices subject to change without notice.



Replaces R&R Products Reel Max 331D

Parts

*Traction Unit
Engine*



Item No	R&R Part No.	OEM Part No.	Description	Qty Req	Order Quantity
26	R3296-2	R32127-10, R9157404	Nut - #10 Lock	1	
28	R3234-29		Bolt - 5/16-18x1 Serr Hex	3	
29	R353-781		Fitting-Elbow	2	
30	R92-2379		Clamp - Hose	3	
31	R2412-10	R3-3206	R-Clamp	1	
32	R32128-44		Nut	2	
35	R3255-8		Washer - Lock 5/16 Ext	4	
37	R95-8937-03	R95-8937	Mount - Engine - LH	1	
38	R98-9311		Swivel-Throttle	1	
40	RX1624174250	R110-0972, R99-3453	Kubota Pulley - Fan	1	
41	RX1628374110	R99-3461	Kubota Fan	1	
42	RX0175450620	R33113-025, R43-2600, R48-7640, R99-8363	Kubota Bolt - Flange	4	
46	RX1526312370	R98-9611, R99-8343, RX1537112370	Kubota Gasket - Muffler	1	
47	R3253-4	R01-166-0110, R01-166-0510, R09053, R23-10-GD, R24-7170, R30-8520, R42-9850, R48-9350, R48-9360, R48-9570, R68-9420, R99-7577	Washer - Lock 5/16 Zinc	4	

All original equipment manufacturers names and part numbers are used for identification purposes only, and we are in no way implying that our products are original equipment parts. Prices subject to change without notice.



Replaces R&R Products Reel Max 331D

Parts

*Traction Unit
Engine*



Item No	R&R Part No.	OEM Part No.	Description	Qty Req	Order Quantity
48	R104-2612		Nut - 8mm x 1.25 Fl Lock	4	
49	R104-4834	R95-8942	Muffler	1	

All original equipment manufacturers names and part numbers are used for identification purposes only, and we are in no way implying that our products are original equipment parts. Prices subject to change without notice.