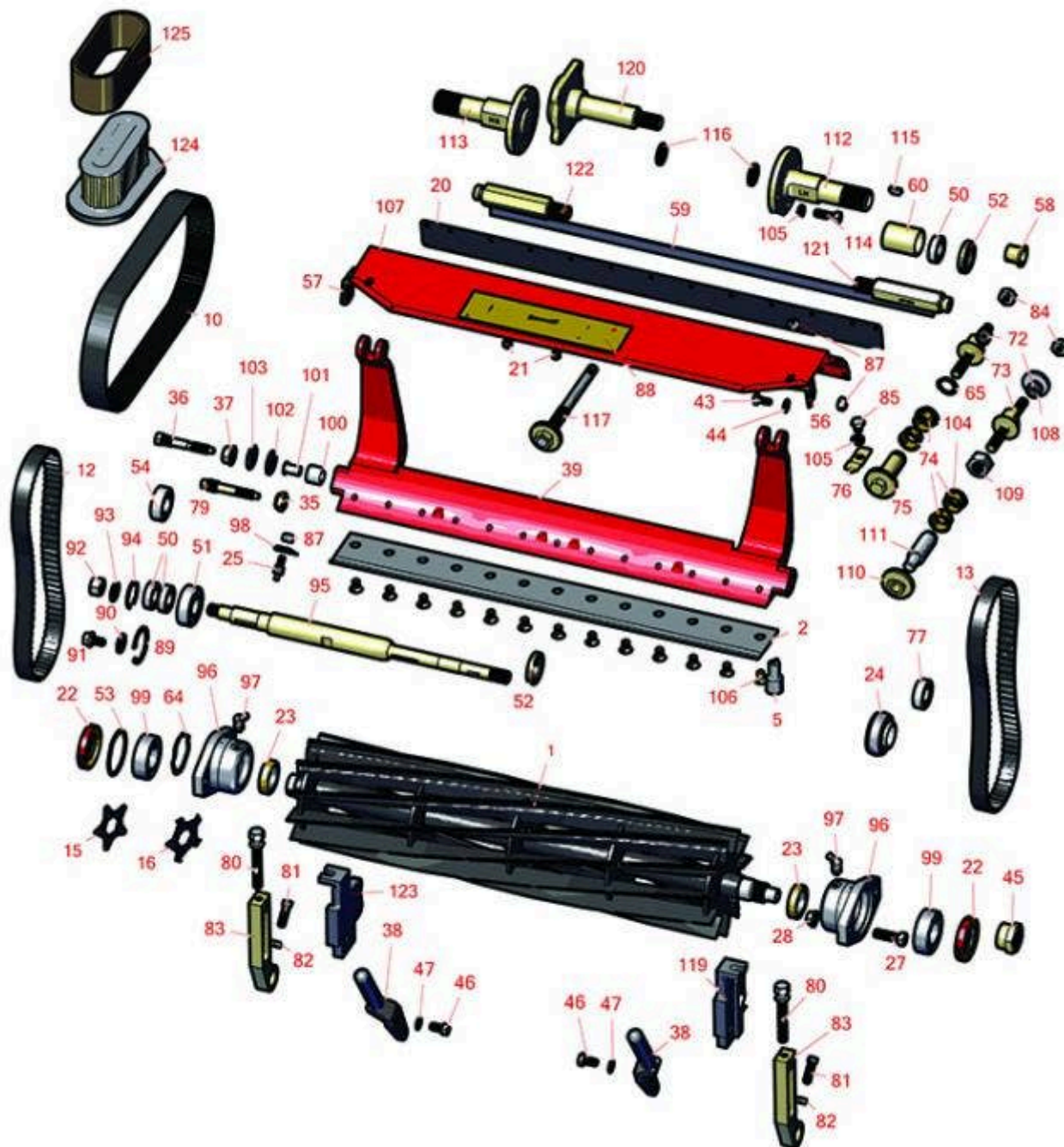




# Replaces Toro Greensmaster 1000 Parts

Mower - Model 04052

Reel & Bedknife



All original equipment manufacturers names and part numbers are used for identification purposes only, and we are in no way implying that our products are original equipment parts. Prices subject to change without notice.



# Replaces Toro Greensmaster 1000 Parts

Mower - Model 04052

Reel & Bedknife



Item No	R&R Part No.	OEM Part No.	Description	Qty Req	Order Quantity
---------	--------------	--------------	-------------	---------	----------------

## R&R Reels, Lifetime Guaranteed

1	<b>R92-9672</b>	92-9672, 93-6087	Reel - 8 Blade	1	
---	-----------------	---------------------	----------------	---	--

*Detail Description: R&R Reel blades are expertly crafted from premium high carbon-boron alloy steel, heat-treated to perfectly complement both R&R and OEM bedknives. Each reel undergoes precision cylindrical grinding on bearing surfaces, followed by relief grinding for optimal performance. Advanced computer balancing ensures extended reel and bearing life. Backed by our lifetime guarantee against defects in materials and craftsmanship under normal use, R&R Reels deliver unmatched durability and cutting precision you can trust.:*

1	<b>R13-8519</b>	13-8519, 14-0839, 65-8200, 92-8653, 93-6097	Reel - 11 Blade	1	
---	-----------------	---	-----------------	---	--

*Detail Description: R&R Reel blades are expertly crafted from premium high carbon-boron alloy steel, heat-treated to perfectly complement both R&R and OEM bedknives. Each reel undergoes precision cylindrical grinding on bearing surfaces, followed by relief grinding for optimal performance. Advanced computer balancing ensures extended reel and bearing life. Backed by our lifetime guarantee against defects in materials and craftsmanship under normal use, R&R Reels deliver unmatched durability and cutting precision you can trust.:*

1	<b>R150755</b>	117-1449	Reel - 14 Blade	1	
---	----------------	----------	-----------------	---	--

*Detail Description: R&R Reel blades are expertly crafted from premium high carbon-boron alloy steel, heat-treated to perfectly complement both R&R and OEM bedknives. Each reel undergoes precision cylindrical grinding on bearing surfaces, followed by relief grinding for optimal performance. Advanced computer balancing ensures extended reel and bearing life. Backed by our lifetime guarantee against defects in materials and craftsmanship under normal use, R&R Reels deliver unmatched durability and cutting precision you can trust.:*

## R&R Bedknives, Lifetime Guaranteed

2	<b>R93-4262</b>	65-8250, 93-4262, 93-4263	Bedknife - Micro Cut .062 - .187 HOC	1	
---	-----------------	---------------------------------	---	---	--

*Detail Description: R&R Bedknives are manufactured from high carbon-boron alloy steel and then hardened to RC46-49 to match the temper of our reel blades and original equipment reels. Bedknives are surface ground on the top and front edge and straightened three times before being packaged with oil for rust prevention. All R&R Bedknives now have an increased front edge grind for added life. All R&R Bedknives are guaranteed against defects in material and workmanship under normal use for the life of the part.:*

All original equipment manufacturers names and part numbers are used for identification purposes only, and we are in no way implying that our products are original equipment parts. Prices subject to change without notice.



## Replaces Toro Greensmaster 1000 Parts

Mower - Model 04052

Reel & Bedknife



Item No	R&R Part No.	OEM Part No.	Description	Qty Req	Order Quantity
2	<b>R108-4303</b>	104-7720, 108-4303	Bedknife - Micro Cut Extended .062 - .187 HOC	1	
<i>Detail Description: R&amp;R Bedknives are manufactured from high carbon-boron alloy steel and then hardened to RC46-49 to match the temper of our reel blades and original equipment reels. Bedknives are surface ground on the top and front edge and straightened three times before being packaged with oil for rust prevention. All R&amp;R Bedknives now have an increased front edge grind for added life. All R&amp;R Bedknives are guaranteed against defects in material and workmanship under normal use for the life of the part.:</i>					
2	<b>R93-4263</b>	63-8560, 66-9320, 93-4263, 93-6039	Bedknife - Tournament Cut .125 - .500 HOC	1	
<i>Detail Description: R&amp;R Bedknives are manufactured from high carbon-boron alloy steel and then hardened to RC46-49 to match the temper of our reel blades and original equipment reels. Bedknives are surface ground on the top and front edge and straightened three times before being packaged with oil for rust prevention. All R&amp;R Bedknives now have an increased front edge grind for added life. All R&amp;R Bedknives are guaranteed against defects in material and workmanship under normal use for the life of the part.:</i>					
2	<b>R108-4302</b>	108-4301, 108-4302	Bedknife - Tournament Cut Extended .125 - .500 HOC	1	
<i>Detail Description: R&amp;R Bedknives are manufactured from high carbon-boron alloy steel and then hardened to RC46-49 to match the temper of our reel blades and original equipment reels. Bedknives are surface ground on the top and front edge and straightened three times before being packaged with oil for rust prevention. All R&amp;R Bedknives now have an increased front edge grind for added life. All R&amp;R Bedknives are guaranteed against defects in material and workmanship under normal use for the life of the part.:</i>					
2	<b>R93-4264</b>	57-4960, 63-8470, 93-4264	Bedknife - Low Cut .187 - 1.00 HOC	1	
<i>Detail Description: R&amp;R Bedknives are manufactured from high carbon-boron alloy steel and then hardened to RC46-49 to match the temper of our reel blades and original equipment reels. Bedknives are surface ground on the top and front edge and straightened three times before being packaged with oil for rust prevention. All R&amp;R Bedknives now have an increased front edge grind for added life. All R&amp;R Bedknives are guaranteed against defects in material and workmanship under normal use for the life of the part.:</i>					
2	<b>R94-6392</b>	62-2500, 94-6392	Bedknife - High Cut .312 - 1.00 HOC	1	

All original equipment manufacturers names and part numbers are used for identification purposes only, and we are in no way implying that our products are original equipment parts. Prices subject to change without notice.



# Replaces Toro Greensmaster 1000 Parts

Mower - Model 04052

Reel & Bedknife



Item No	R&R Part No.	OEM Part No.	Description	Qty Req	Order Quantity
---------	--------------	--------------	-------------	---------	----------------

*Detail Description: R&R Bedknives are manufactured from high carbon-boron alloy steel and then hardened to RC46-49 to match the temper of our reel blades and original equipment reels. Bedknives are surface ground on the top and front edge and straightened three times before being packaged with oil for rust prevention. All R&R Bedknives now have an increased front edge grind for added life. All R&R Bedknives are guaranteed against defects in material and workmanship under normal use for the life of the part.:*

2	<b>R150466</b>	63-8600, 64-6393, 94-6393	Bedknife - Super Thick .312 - 1.00 HOC	1	
---	----------------	---------------------------------	---	---	--

*Detail Description: R&R Bedknives are manufactured from high carbon-boron alloy steel and then hardened to RC46-49 to match the temper of our reel blades and original equipment reels. Bedknives are surface ground on the top and front edge and straightened three times before being packaged with oil for rust prevention. All R&R Bedknives now have an increased front edge grind for added life. All R&R Bedknives are guaranteed against defects in material and workmanship under normal use for the life of the part.:*

2	<b>R63-8610</b>	63-8610	Bedknife - Fairway Cut .375 - 1.00 HOC	1	
---	-----------------	---------	---	---	--

*Detail Description: R&R Bedknives are manufactured from high carbon-boron alloy steel and then hardened to RC46-49 to match the temper of our reel blades and original equipment reels. Bedknives are surface ground on the top and front edge and straightened three times before being packaged with oil for rust prevention. All R&R Bedknives now have an increased front edge grind for added life. All R&R Bedknives are guaranteed against defects in material and workmanship under normal use for the life of the part.:*

## R&R Razor Tool Steel Bedknives, Lifetime Guaranteed

2	<b>R115-1880</b>	115-1880	Bedknife - Razor Tool Steel - 21 Micro Cut .062 - .187 HOC	1	
---	------------------	----------	---	---	--

*Detail Description: R&R Razor bedknives are manufactured from premium alloy tool steel steel and then hardened to RC48-51 to match the temper of our Razor reel blades and original equipment premium series reels. Bedknives are surface ground on the top and front edge and specially packaged for rust prevention. All R&R Bedknives now have an increased front edge grind for added life. All R&R Bedknives are guaranteed against defects in material and workmanship under normal use for the life of the part. You can expect up to double the life over standard bedknives.:*

2	<b>R115-1881</b>	115-1881	Bedknife - Razor Tool Steel - 21 Tournament Cut .125 - .500 HOC	1	
---	------------------	----------	---	---	--

All original equipment manufacturers names and part numbers are used for identification purposes only, and we are in no way implying that our products are original equipment parts. Prices subject to change without notice.



# Replaces Toro Greensmaster 1000 Parts

Mower - Model 04052

Reel & Bedknife



Item No	R&R Part No.	OEM Part No.	Description	Qty Req	Order Quantity
---------	--------------	--------------	-------------	---------	----------------

*Detail Description: R&R Razor bedknives are manufactured from premium alloy tool steel steel and then hardened to RC48-51 to match the temper of our Razor reel blades and original equipment premium series reels. Bedknives are surface ground on the top and front edge and specially packaged for rust prevention. All R&R Bedknives now have an increased front edge grind for added life. All R&R Bedknives are guaranteed against defects in material and workmanship under normal use for the life of the part. You can expect up to double the life over standard bedknives.:*

## Overhaul Kits & Service Tools

5	<b>R51-0880</b>	51-0880	Bedknife Screw Driver Tool	0
---	-----------------	---------	----------------------------	---

*Detail Description: Easily install and remove bed knife screws with the help of a ratchet with 3/8" drive. Tool manufactured with hardened alloy steel.:*

## Belts

10	<b>R65-9080</b>	65-9080	Belt - Countershaft	1
12	<b>R150525</b>	65-6200	Belt - Reel Drive	1
13	<b>R150527</b>	65-6210	Belt - Drum Drive	2

## Verti-Cut Blades

15	<b>R70-1170</b>	70-1170	Verti-Cut Blade - 2-3/8 w/7/8 Hex	42
16	<b>R110-2393</b>	110-2393	Verti-Cut Blade - 2-3/8 w/7/8 Hex Carbide Tipped	42

## Other Parts Available

20	<b>R36-7260</b>	36-7260	Bar - Cut Off Grass Shield	1
21	<b>R32144-73</b>	104-2065, 32144-73	Screw - Machine Hex Washer Head	5
22	<b>R253-163</b>	253-163	Seal - Reel	2
23	<b>R253-96</b>	253-96	Seal - Oil Single Lip Reel	2

All original equipment manufacturers names and part numbers are used for identification purposes only, and we are in no way implying that our products are original equipment parts. Prices subject to change without notice.





# Replaces Toro Greensmaster 1000 Parts

Mower - Model 04052

Reel & Bedknife



Item No	R&R Part No.	OEM Part No.	Description	Qty Req	Order Quantity
24	R71-1360	251-219, 251-253, 251-254, 251-320, 71-1360, 88-7880, 94-3405	Bearing	2	
25	R93-9014	65-7020, 92-7676, 93-9014	Pin-Clutch, Actuat	2	
27	R400264	01-150-0180, 01-178-0610, 20-48-AD, 20-48-AGD, 32-9160, 3224-3, 323-29, 323-7, 400264, 908035P	Bolt - Hex HD 3/8-16 x 1-1/4	4	
28	R3296-39	32127-25, 32128-36, 3290-357, 3296-17, 3296-22, 3296-39, 915663P, 99-7443	Locknut - 3/8-16 Nylon	4	
35	R3296-28	119-4154, 140-9234, 32127-34, 32128-7, 32128-8, 32136-7, 3296-28	Nut - 1/2-20 ESNA Jam	2	
<i>Tech Note: 2010 &amp; Up:</i>					
36	R65-6270	119-4050, 65-6270	Bolt - Bed Bar	2	
<i>Tech Note: Up to 2009:</i>					

All original equipment manufacturers names and part numbers are used for identification purposes only, and we are in no way implying that our products are original equipment parts. Prices subject to change without notice.



# Replaces Toro Greensmaster 1000 Parts

Mower - Model 04052

Reel & Bedknife



Item No	R&R Part No.	OEM Part No.	Description	Qty Req	Order Quantity
37	<b>R32128-48</b>	32128-48	Locknut - 7/16-20 Flanged	2	
<i>Tech Note: Up to 2009:</i>					
38	<b>R65-8570</b>	65-7250, 65-8570	Rod - Mounting Grass Basket	2	
39	<b>R93-6053-01</b>	65-6240, 93-6053, 93-6053-01	Bed Bar	1	
39	<b>R112-9279-03</b>	112-9279-03	Bedbar - Aggressive	1	
43	<b>R400106</b>	321-3, 513315, 908002P	Bolt - Hex HD 1/4-20 x 5/8	4	
44	<b>R3256-22</b>	24-9-BD, 3-1032, 3256-1, 3256-22, 93-0954, 93-0989	Washer - Flat 1/4 Yellow	6	
45	<b>R92-7302</b>	65-8240, 86-7160, 92-7302	Locknut - Reel	2	
46	<b>R322-2</b>	322-2, 513338P	Bolt - Hex HD 5/16-18 x 5/8	2	
47	<b>R3255-8</b>	3255-8	Washer - Lock 5/16 Ext	2	
50	<b>R251-336</b>	251-336	Bearing	2	
51	<b>R251-318</b>	251-11, 251-204, 251-318, 251-38, 251-89	Bearing - Ball	1	
52	<b>R364170</b>	253-118, 62-3400	Seal	1	
53	<b>R32151-92</b>	32151-92	Retaining Ring	1	

All original equipment manufacturers names and part numbers are used for identification purposes only, and we are in no way implying that our products are original equipment parts. Prices subject to change without notice.



# Replaces Toro Greensmaster 1000 Parts

Mower - Model 04052

Reel & Bedknife



Item No	R&R Part No.	OEM Part No.	Description	Qty Req	Order Quantity
54	<b>R38-7820</b>	100-1048, 251-277, 251-5, 38-7820	Bearing - Ball	2	
56	<b>R65-6460</b>	65-6460	Bracket - RH	1	
57	<b>R65-6450</b>	65-6450	Bracket - LH	1	
58	<b>R65-8770</b>	65-8770	Bushing	2	
59	<b>R106-2619</b>	106-2619	Seal - Strip	1	
60	<b>R65-6520</b>	65-6520	Spacer	1	
64	<b>R3290-485</b>	3290-485	Washer - Wave	1	
65	<b>R32120-93</b>	32120-93	Snap Ring - HD	2	
72	<b>R99-3755</b>	99-3755	Spring - Bed Bar Adjusting	2	
73	<b>R99-2096</b>	99-2096	Screw - Bed Bar Adjustment - M10 Thrd 1 End	2	
74	<b>R106-5344</b>	106-5344	Bushing - Flanged and Keyed	2	
75	<b>R106-5363</b>	106-5363	Shaft - Adjusting - Bed Bar - Stainless	2	
76	<b>R99-2097</b>	99-2097	Detent - Bed Bar Adjuster	2	
77	<b>R251-338</b>	251-338	Bearing - Ball	2	
79	<b>R117-9493</b>	117-9493	Bolt - Bed Bar - Hardened	2	
<i>Tech Note: 2009 &amp; Up:</i>					
80	<b>R93-6051</b>	93-6051	Bolt - HOC	2	
81	<b>R3242-4</b>	3242-4	Screw - Set Sq HD 5/16-18 x 1	2	

All original equipment manufacturers names and part numbers are used for identification purposes only, and we are in no way implying that our products are original equipment parts. Prices subject to change without notice.





## Replaces Toro Greensmaster 1000 Parts

Mower - Model 04052

Reel & Bedknife



Item No	R&R Part No.	OEM Part No.	Description	Qty Req	Order Quantity
82	RP457-2	01-191-0518, 22-12-AJK, 3218-2, 513299, P457-2	Nut - Jam 5/16-18 Zinc	2	
83	R93-6090	93-6090	Arm - Roller HOC	2	
84	R33025-00	32025-00, 33025-00	Locknut - 10mm x 1.5 Jam	2	
85	R322-26	322-26	Bolt - Hx HD 5/16-18 x 3/8	2	
87	R301504	2296-42, 301504, 32127-24, 32128-33, 32146-17, 3296-16, 3296-42, 3296-42 , 915661P	Locknut - ESNA 1/4-20	4	
88	R93-8064	93-8064	Decal - Warning	1	
89	RA170040	32120-42, 52-6640, 74-9900, SG427625	Ring - Snap	1	
90	R88-7200	88-7200	Washer - Flat	1	
91	R3234-14	3234-14, 3234-23	Bolt - Hex Serrated Washer HD	1	
92	R3219-5	01-188-0820, 22-15-BJD, 22-15-BJKD, 3219-5	Nut - 1/2-20	1	
93	R3254-4	21-3890, 26-8050, 3254-4	Washer - Lock 1/2 Z Int Star	1	
94	R32151-89	32151-89	Retaining Ring - Bowed	1	

All original equipment manufacturers names and part numbers are used for identification purposes only, and we are in no way implying that our products are original equipment parts. Prices subject to change without notice.



# Replaces Toro Greensmaster 1000 Parts

Mower - Model 04052

Reel & Bedknife



Item No	R&R Part No.	OEM Part No.	Description	Qty Req	Order Quantity
95	<b>R93-6056</b>	93-6056	Shaft - Power	1	
96	<b>R65-8640</b>	65-6090, 65-8640	Housing - Bearing	1	
97	<b>R700414</b>	302-11, 302-19, 302-4, 32-8170	Zerk - Grease 1/4-28 45 Deg	1	
98	<b>R65-6290</b>	65-6259, 65-6290	Spring-Detent	1	
99	<b>R251-342</b>	251-342	Bearing - Reel	2	
100	<b>R63-9510</b>	63-9480, 63-9510	Bushing - Rubber For Bed Bar	2	
101	<b>R52-2890</b>	52-2890	Bushing - Flanged	2	
102	<b>R52-2900</b>	52-2900	Washer - Nylon	2	
103	<b>R52-2860</b>	119-4150, 52-2860	Washer - Bed Bar Pivot	2	
104	<b>R106-5335</b>	106-5335	Wave Washer - Reel Adjusting	2	
105	<b>R3253-4</b>	01-166-0110, 01-166-0510, 23-10-GD, 24-7170, 30-8520, 3253-4, 48-9350, 48-9360, 48-9570, 68-9420, 99-7577	Washer - Lock 5/16 Zinc	2	
106	<b>R150477</b>	57-4910	Screw - Bedknife 5/16-18 x 1/2	13	
107	<b>R93-6069</b>	93-6069	Shield - Grass	1	
107	<b>R112-9471</b>	112-9471	Grass Shield	1	

All original equipment manufacturers names and part numbers are used for identification purposes only, and we are in no way implying that our products are original equipment parts. Prices subject to change without notice.



## Replaces Toro Greensmaster 1000 Parts

Mower - Model 04052

Reel & Bedknife



Item No	R&R Part No.	OEM Part No.	Description	Qty Req	Order Quantity
108	<b>R99-2098</b>	99-2098	Washer - Bed Bar Adjuster	2	
109	<b>R106-5336</b>	106-5336	Nut - 5/8-18 Jam Bed Bar Adj	2	
110	<b>R93-2549</b>	93-2549	Knob - Bed Bar Adjustment	2	
111	<b>R106-6921</b>	106-5334, 106-6921, 114-4634	Shaft - Bed Bar Adjustment Assy	2	
112	<b>R88-7520</b>	88-7520	Shaft - Extension LH Drum	1	
113	<b>R88-7510</b>	88-7510	Shaft - Extension RH Drum	1	
114	<b>R322-5</b>	01-178-0508, 20-26-AD, 20-26-AGD, 30-9000, 322-5, 513341, 519755, 908019P, N/A	Bolt - Hex HD 5/16-18 x 1	1	
115	<b>R3257-32</b>	13-2840, 3257-32	Key - Woodruff	2	
116	<b>R253-84</b>	253-84, 7-0044	Seal - Micro Adj.	2	
117	<b>R94-5873</b>	94-5873	Handle - Adjusting Bed Bar	2	
119	<b>R93-6049</b>	93-6049	Bracket - HOC LH	1	
120	<b>R94-5850</b>	94-5850	Spindle - Rear Roller Drum	1	
121	<b>R88-7580</b>	88-7580	Shaft - Transport Wheel LH	1	
122	<b>R88-7590</b>	88-7590	Shaft - Transport Wheel RH	1	
123	<b>R93-6048</b>	93-6048	Bracket - HOC RH	1	
124	<b>RAK11013-2132</b>	93-8636	Kawasaki Element-Air Filter	1	

All original equipment manufacturers names and part numbers are used for identification purposes only, and we are in no way implying that our products are original equipment parts. Prices subject to change without notice.



# Replaces Toro Greensmaster 1000 Parts

Mower - Model 04052  
Reel & Bedknife



Item No	R&R Part No.	OEM Part No.	Description	Qty Req	Order Quantity
125	RAK11013-2133	93-8637	Kawasaki Pre Cleaner Foam - Air Filter	1	

All original equipment manufacturers names and part numbers are used for identification purposes only, and we are in no way implying that our products are original equipment parts. Prices subject to change without notice.