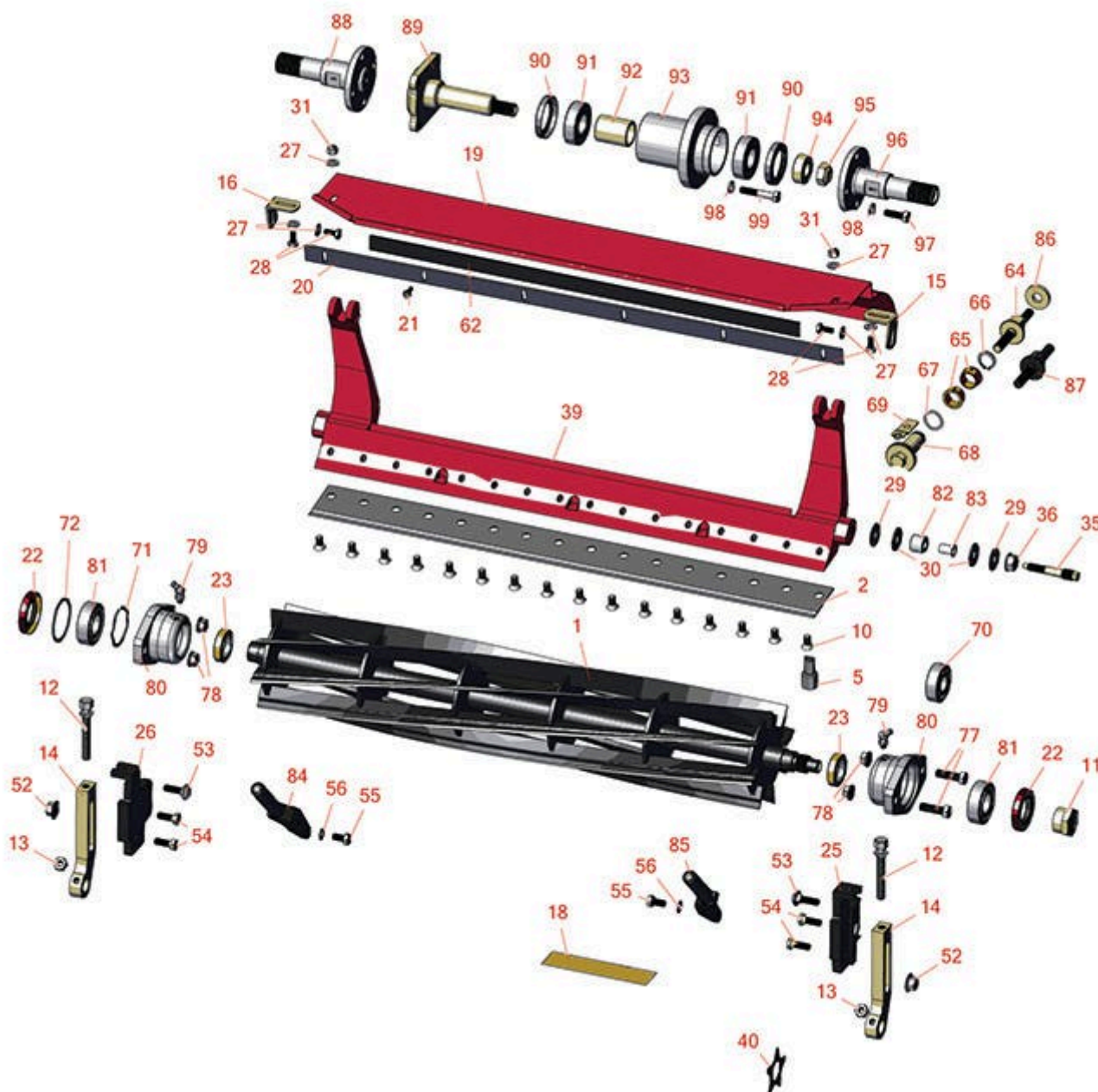




# Replaces Toro Greensmaster 1600 Parts

Mower - Model 04056

Reel & Bedknife



All original equipment manufacturers names and part numbers are used for identification purposes only, and we are in no way implying that our products are original equipment parts. Prices subject to change without notice.



# Replaces Toro Greensmaster 1600 Parts

Mower - Model 04056

Reel & Bedknife



Item No	R&R Part No.	OEM Part No.	Description	Qty Req	Order Quantity
---------	--------------	--------------	-------------	---------	----------------

## R&R Reels, Lifetime Guaranteed

1	<b>R95-0900</b>	93-9029, 95-0900	Reel - 8 Blade 26 in	1	
---	-----------------	---------------------	----------------------	---	--

*Detail Description: R&R Reel blades are expertly crafted from premium high carbon-boron alloy steel, heat-treated to perfectly complement both R&R and OEM bedknives. Each reel undergoes precision cylindrical grinding on bearing surfaces, followed by relief grinding for optimal performance. Advanced computer balancing ensures extended reel and bearing life. Backed by our lifetime guarantee against defects in materials and craftsmanship under normal use, R&R Reels deliver unmatched durability and cutting precision you can trust.:*

1	<b>R112-9276</b>	112-9276	Reel - 11 Blade 26 in	1	
---	------------------	----------	-----------------------	---	--

*Detail Description: R&R Reel blades are manufactured from high carbon-boron alloy steel and then hardened to RC46-49 to match the temper of our bedknives and original equipment bedknives. All R&R Reels are cylindrically ground on bearing surfaces and then relief ground. Reels are then precision computer balanced for extended bearing and reel life. R&R Products Reels are guaranteed against defects in material and workmanship for the life of the reel under normal use.:*

## R&R Bedknives, Lifetime Guaranteed

2	<b>R94-5885</b>	94-5885	Bedknife - Tournament	1	
---	-----------------	---------	-----------------------	---	--

*Detail Description: R&R Bedknives are manufactured from high carbon-boron alloy steel and then hardened to RC46-49 to match the temper of our reel blades and original equipment reels. Bedknives are surface ground on the top and front edge and straightened three times before being packaged with oil for rust prevention. All R&R Bedknives now have an increased front edge grind for added life. All R&R Bedknives are guaranteed against defects in material and workmanship under normal use for the life of the part.:*

2	<b>R93-9015</b>	93-9015	Bedknife - Thin	1	
---	-----------------	---------	-----------------	---	--

*Detail Description: R&R Bedknives are manufactured from high carbon-boron alloy steel and then hardened to RC46-49 to match the temper of our reel blades and original equipment reels. Bedknives are surface ground on the top and front edge and straightened three times before being packaged with oil for rust prevention. All R&R Bedknives now have an increased front edge grind for added life. All R&R Bedknives are guaranteed against defects in material and workmanship under normal use for the life of the part.:*

2	<b>R150467</b>		Bedknife - Thick	1	
---	----------------	--	------------------	---	--

All original equipment manufacturers names and part numbers are used for identification purposes only, and we are in no way implying that our products are original equipment parts. Prices subject to change without notice.



# Replaces Toro Greensmaster 1600 Parts

Mower - Model 04056

Reel & Bedknife



Item No	R&R Part No.	OEM Part No.	Description	Qty Req	Order Quantity
---------	--------------	--------------	-------------	---------	----------------

*Detail Description: R&R Bedknives are manufactured from high carbon-boron alloy steel and then hardened to RC46-49 to match the temper of our reel blades and original equipment reels. Bedknives are surface ground on the top and front edge and straightened three times before being packaged with oil for rust prevention. All R&R Bedknives now have an increased front edge grind for added life. All R&R Bedknives are guaranteed against defects in material and workmanship under normal use for the life of the part.:*

2	<b>R104-2646</b>	104-2646	Bedknife - High Cut 5/16-1 in	1
---	------------------	----------	-------------------------------	---

*Detail Description: R&R Bedknives are manufactured from high carbon-boron alloy steel and then hardened to RC46-49 to match the temper of our reel blades and original equipment reels. Bedknives are surface ground on the top and front edge and straightened three times before being packaged with oil for rust prevention. All R&R Bedknives now have an increased front edge grind for added life. All R&R Bedknives are guaranteed against defects in material and workmanship under normal use for the life of the part.:*

2	<b>R107-8181</b>	107-8181	Bedknife - Super Thick Cut	1
---	------------------	----------	----------------------------	---

*Detail Description: R&R Bedknives are manufactured from high carbon-boron alloy steel and then hardened to RC46-49 to match the temper of our reel blades and original equipment reels. Bedknives are surface ground on the top and front edge and straightened three times before being packaged with oil for rust prevention. All R&R Bedknives now have an increased front edge grind for added life. All R&R Bedknives are guaranteed against defects in material and workmanship under normal use for the life of the part.:*

2	<b>R112-9275</b>	112-9275	Bedknife - Micro Cut	1
---	------------------	----------	----------------------	---

*Detail Description: R&R Bedknives are manufactured from high carbon-boron alloy steel and then hardened to RC46-49 to match the temper of our reel blades and original equipment reels. Bedknives are surface ground on the top and front edge and straightened three times before being packaged with oil for rust prevention. All R&R Bedknives now have an increased front edge grind for added life. All R&R Bedknives are guaranteed against defects in material and workmanship under normal use for the life of the part.:*

## Overhaul Kits & Service Tools

5	<b>R51-0880</b>	51-0880	Bedknife Screw Driver Tool	0
---	-----------------	---------	----------------------------	---

*Detail Description: Easily install and remove bed knife screws with the help of a ratchet with 3/8" drive. Tool manufactured with hardened alloy steel.:*

## Blades

40	<b>R110-2343</b>	110-2343	Groomer Blade - Carbide Tipped - Helix 1.5mm	52
----	------------------	----------	--	----

All original equipment manufacturers names and part numbers are used for identification purposes only, and we are in no way implying that our products are original equipment parts. Prices subject to change without notice.



# Replaces Toro Greensmaster 1600 Parts

Mower - Model 04056

Reel & Bedknife



Item No	R&R Part No.	OEM Part No.	Description	Qty Req	Order Quantity
40	<b>R121-9531</b>	121-9531	Groomer Blade - Carbide Tipped - Helix 1mm	52	
<b>Other Parts Available</b>					
10	<b>R150477</b>	57-4910	Screw - Bedknife 5/16-18 x 1/2	16	
11	<b>R92-7302</b>	65-8240, 86-7160, 92-7302	Locknut - Reel	1	
12	<b>R93-6051</b>	93-6051	Bolt - HOC	2	
13	<b>R443106</b>	01-188-0518, 22-12-AJD, 32111-4, 3217-4, 3217-6, 3218-2, 513295, 513412, 915112P, 915978, 915979	Nut - 5/16-18 Y/Zinc Plated	2	
14	<b>R93-6090</b>	93-6090	Arm - Roller HOC	2	
15	<b>R65-6450</b>	65-6450	Bracket - LH	1	
16	<b>R65-6460</b>	65-6460	Bracket - RH	1	
18	<b>R93-8064</b>	93-8064	Decal - Warning	1	
19	<b>R110-7370</b>	110-7370	Grass Shield Assy	1	
20	<b>R94-5879</b>	94-5879	Bar - Cut-Off	1	
21	<b>R32144-73</b>	104-2065, 32144-73	Screw - Machine Hex Washer Head	6	
22	<b>R253-163</b>	253-163	Seal - Reel	2	
23	<b>R253-96</b>	253-96	Seal - Oil Single Lip Reel	2	

All original equipment manufacturers names and part numbers are used for identification purposes only, and we are in no way implying that our products are original equipment parts. Prices subject to change without notice.



# Replaces Toro Greensmaster 1600 Parts

Mower - Model 04056

Reel & Bedknife



Item No	R&R Part No.	OEM Part No.	Description	Qty Req	Order Quantity
25	<b>R93-6049</b>	93-6049	Bracket - HOC LH	1	
26	<b>R93-6048</b>	93-6048	Bracket - HOC RH	1	
27	<b>R3256-22</b>	24-9-BD, 3-1032, 3256-1, 3256-22, 93-0954, 93-0989	Washer - Flat 1/4 Yellow	6	
28	<b>R400106</b>	321-3, 513315, 908002P	Bolt - Hex HD 1/4-20 x 5/8	4	
29	<b>R52-2860</b>	119-4150, 52-2860	Washer - Bed Bar Pivot	4	
30	<b>R52-2900</b>	52-2900	Washer - Nylon	4	
31	<b>R301504</b>	2296-42, 301504, 32127-24, 32128-33, 32146-17, 3296-16, 3296-42, 3296-42 , 915661P	Locknut - ESNA 1/4-20	4	
35	<b>R117-9493</b>	117-9493	Bolt - Bed Bar - Hardened	2	
36	<b>R32128-48</b>	32128-48	Locknut - 7/16-20 Flanged	2	
39	<b>R93-9049-01</b>	93-9049, 93-9049-01	Bed Bar	1	
39	<b>R112-9279-03</b>	112-9279-03	Bedbar - Aggressive	1	
52	<b>R32128-21</b>	32128-21	Locknut - Flanged 3/8-16 Whiz Top Lock	2	
53	<b>R3231-5</b>	3231-5	Bolt - Carriage 3/8-16 x 1-3/4	2	

All original equipment manufacturers names and part numbers are used for identification purposes only, and we are in no way implying that our products are original equipment parts. Prices subject to change without notice.



# Replaces Toro Greensmaster 1600 Parts

Mower - Model 04056

Reel & Bedknife



Item No	R&R Part No.	OEM Part No.	Description	Qty Req	Order Quantity
54	<b>R92-8914</b>	3231-5, 65-8530, 92-8914	Bolt - Tapered Face 5/16-18 x 7/8	4	
55	<b>R322-2</b>	322-2, 513338P	Bolt - Hex HD 5/16-18 x 5/8	4	
56	<b>R3255-8</b>	3255-8	Washer - Lock 5/16 Ext	4	
62	<b>R95-1636</b>	95-1636	Seal - Strip Grass Shield	1	
64	<b>R99-2096</b>	99-2096	Screw - Bed Bar Adjustment - M10 Thrd 1 End	2	
65	<b>R106-5344</b>	106-5344	Bushing - Flanged and Keyed	4	
66	<b>R32120-93</b>	32120-93	Snap Ring - HD	2	
67	<b>R106-5335</b>	106-5335	Wave Washer - Reel Adjusting	2	
68	<b>R106-5363</b>	106-5363	Shaft - Adjusting - Bed Bar - Stainless	2	
69	<b>R99-2097</b>	99-2097	Detent - Bed Bar Adjuster	2	
70	<b>R251-318</b>	251-11, 251-204, 251-318, 251-38, 251-89	Bearing - Ball	1	
71	<b>R3290-485</b>	3290-485	Washer - Wave	1	
72	<b>R32151-92</b>	32151-92	Retaining Ring	1	
77	<b>R400264</b>	01-150-0180, 01-178-0610, 20-48-AD, 20-48-AGD, 32-9160, 3224-3, 323-29, 323-7, 400264, 908035P	Bolt - Hex HD 3/8-16 x 1-1/4	4	

All original equipment manufacturers names and part numbers are used for identification purposes only, and we are in no way implying that our products are original equipment parts. Prices subject to change without notice.



## Replaces Toro Greensmaster 1600 Parts

Mower - Model 04056

Reel & Bedknife



Item No	R&R Part No.	OEM Part No.	Description	Qty Req	Order Quantity
78	R3296-39	32127-25, 32128-36, 3290-357, 3296-17, 3296-22, 3296-39, 915663P, 99-7443	Locknut - 3/8-16 Nylon	4	
79	R700414	302-11, 302-19, 302-4, 32-8170	Zerk - Grease 1/4-28 45 Deg	2	
80	R65-8640	65-6090, 65-8640	Housing - Bearing	2	
81	R251-342	251-342	Bearing - Reel	2	
82	R63-9510	63-9480, 63-9510	Bushing - Rubber For Bed Bar	2	
83	R52-2890	52-2890	Bushing - Flanged	2	
84	R93-9017	93-9017	Rod - RH Basket	1	
85	R93-9018	93-9018	Rod - Basket LH	1	
86	R119-4155	119-4155	Washer - Hardened	2	
87	R115-7039	115-7039	Screw - Adjuster - Bedbar	2	
88	R132-3842	132-3842	Shaft- Drum Extension - LH	1	
89	R94-5850	94-5850	Spindle - Rear Roller Drum	1	
90	R253-159	253-159	Seal - Drum	2	
91	RA203605	251-82, 6610	Bearing	2	
92	R65-6520	65-6520	Spacer	1	

All original equipment manufacturers names and part numbers are used for identification purposes only, and we are in no way implying that our products are original equipment parts. Prices subject to change without notice.



## Replaces Toro Greensmaster 1600 Parts

Mower - Model 04056

Reel & Bedknife



Item No	R&R Part No.	OEM Part No.	Description	Qty Req	Order Quantity
93	<b>R132-6971</b>	132-6971, 94-5852	Hub-Drum	1	
94	<b>R65-6530</b>	65-6530	Spacer - Seal	1	
95	<b>R3296-33</b>	3296-33	Locknut - 5/8-18 ESNA Jam	1	
96	<b>R132-3841</b>	132-3841	Shaft- Drum Extension - RH	1	
97	<b>R322-5</b>	01-178-0508, 20-26-AD, 20-26-AGD, 30-9000, 322-5, 513341, 519755, 908019P, N/A	Bolt - Hex HD 5/16-18 x 1	8	
98	<b>R3253-4</b>	01-166-0110, 01-166-0510, 23-10-GD, 24-7170, 30-8520, 3253-4, 48-9350, 48-9360, 48-9570, 68-9420, 99-7577	Washer - Lock 5/16 Zinc	16	
99	<b>R19H3130</b>	322-9, 3223-5	Bolt - Hex HD 5/16-18 x 1-3/4	8	

All original equipment manufacturers names and part numbers are used for identification purposes only, and we are in no way implying that our products are original equipment parts. Prices subject to change without notice.