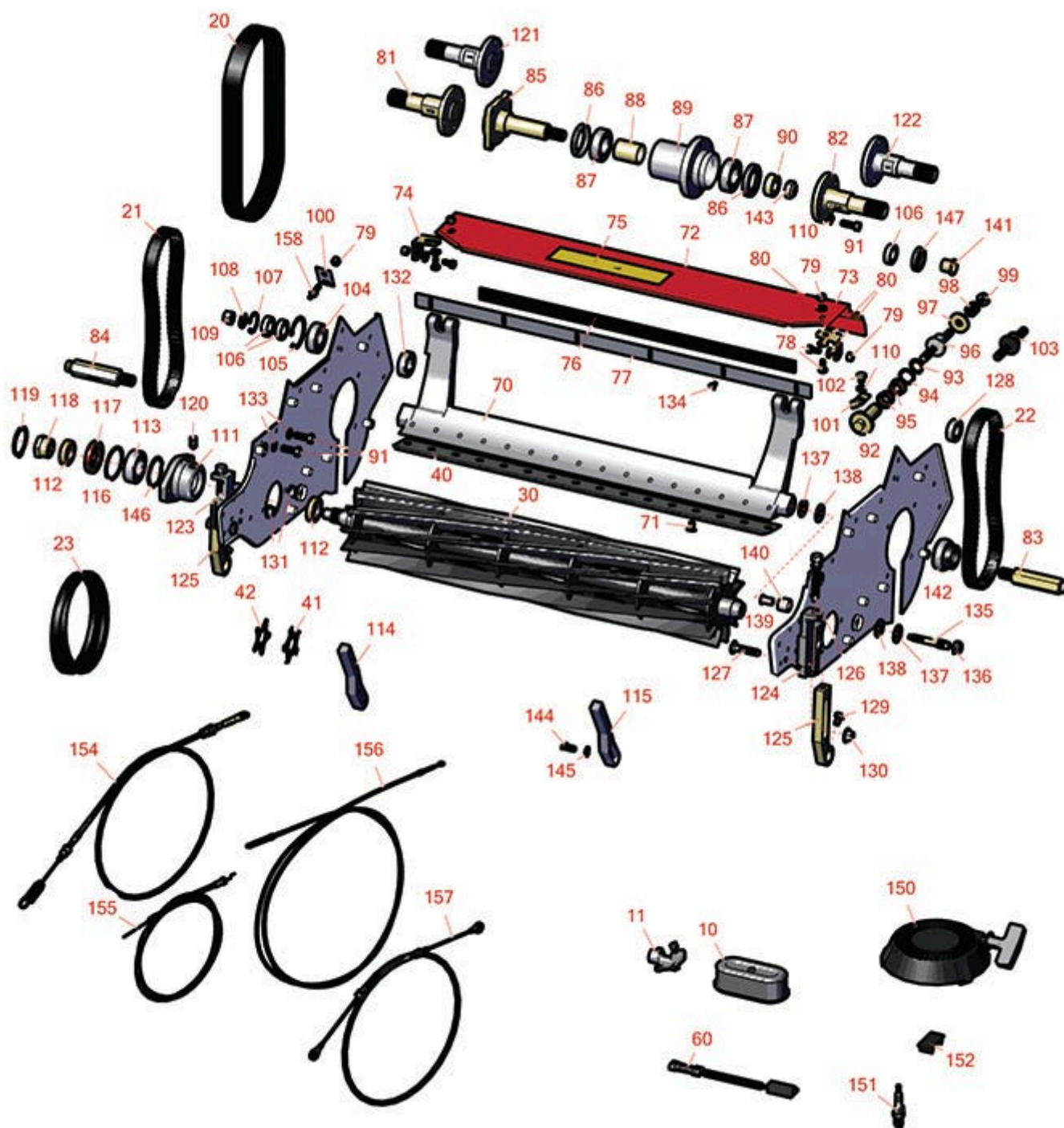




# Replaces Toro Greensmaster 1610 Parts

Mower - Model 04039

Reel & Bedknife



All original equipment manufacturers names and part numbers are used for identification purposes only, and we are in no way implying that our products are original equipment parts. Prices subject to change without notice.



# Replaces Toro Greensmaster 1610 Parts

Mower - Model 04039

Reel & Bedknife



Item No	R&R Part No.	OEM Part No.	Description	Qty Req	Order Quantity
---------	--------------	--------------	-------------	---------	----------------

10	<b>RRF10204</b>	121-0618	SilverGuard Air Filter - Inner	0	
11	<b>R121-0675</b>	121-0675	Fuel Strainer Assy	1	

## Belts

20	<b>R65-9080</b>	65-9080	Belt - Countershaft	1	
21	<b>R150525</b>	65-6200	Belt - Reel Drive	1	
22	<b>R150527</b>	65-6210	Belt - Drum Drive	2	
23	<b>R92-9218</b>	92-9218	Belt - Engine Set of 2	1	

## R&R Reels, Lifetime Guaranteed

30	<b>R95-0900</b>	93-9029, 95-0900	Reel - 8 Blade 26 in	1	
----	-----------------	---------------------	----------------------	---	--

*Detail Description: R&R Reel blades are expertly crafted from premium high carbon-boron alloy steel, heat-treated to perfectly complement both R&R and OEM bedknives. Each reel undergoes precision cylindrical grinding on bearing surfaces, followed by relief grinding for optimal performance. Advanced computer balancing ensures extended reel and bearing life. Backed by our lifetime guarantee against defects in materials and craftsmanship under normal use, R&R Reels deliver unmatched durability and cutting precision you can trust.:*

30	<b>R112-9276</b>	112-9276	Reel - 11 Blade 26 in	1	
----	------------------	----------	-----------------------	---	--

*Detail Description: R&R Reel blades are manufactured from high carbon-boron alloy steel and then hardened to RC46-49 to match the temper of our bedknives and original equipment bedknives. All R&R Reels are cylindrically ground on bearing surfaces and then relief ground. Reels are then precision computer balanced for extended bearing and reel life. R&R Products Reels are guaranteed against defects in material and workmanship for the life of the reel under normal use.:*

## R&R Bedknives, Lifetime Guaranteed

40	<b>R104-2646</b>	104-2646	Bedknife - High Cut 5/16-1 in	1	
----	------------------	----------	-------------------------------	---	--

All original equipment manufacturers names and part numbers are used for identification purposes only, and we are in no way implying that our products are original equipment parts. Prices subject to change without notice.



# Replaces Toro Greensmaster 1610 Parts

Mower - Model 04039

Reel & Bedknife



Item No	R&R Part No.	OEM Part No.	Description	Qty Req	Order Quantity
---------	--------------	--------------	-------------	---------	----------------

*Detail Description: R&R Bedknives are manufactured from high carbon-boron alloy steel and then hardened to RC46-49 to match the temper of our reel blades and original equipment reels. Bedknives are surface ground on the top and front edge and straightened three times before being packaged with oil for rust prevention. All R&R Bedknives now have an increased front edge grind for added life. All R&R Bedknives are guaranteed against defects in material and workmanship under normal use for the life of the part.:*

40	<b>R112-9275</b>	112-9275	Bedknife - Micro Cut	1
----	------------------	----------	----------------------	---

*Detail Description: R&R Bedknives are manufactured from high carbon-boron alloy steel and then hardened to RC46-49 to match the temper of our reel blades and original equipment reels. Bedknives are surface ground on the top and front edge and straightened three times before being packaged with oil for rust prevention. All R&R Bedknives now have an increased front edge grind for added life. All R&R Bedknives are guaranteed against defects in material and workmanship under normal use for the life of the part.:*

40	<b>R107-8181</b>	107-8181	Bedknife - Super Thick Cut	1
----	------------------	----------	----------------------------	---

*Detail Description: R&R Bedknives are manufactured from high carbon-boron alloy steel and then hardened to RC46-49 to match the temper of our reel blades and original equipment reels. Bedknives are surface ground on the top and front edge and straightened three times before being packaged with oil for rust prevention. All R&R Bedknives now have an increased front edge grind for added life. All R&R Bedknives are guaranteed against defects in material and workmanship under normal use for the life of the part.:*

40	<b>R93-9015</b>	93-9015	Bedknife - Thin	1
----	-----------------	---------	-----------------	---

*Detail Description: R&R Bedknives are manufactured from high carbon-boron alloy steel and then hardened to RC46-49 to match the temper of our reel blades and original equipment reels. Bedknives are surface ground on the top and front edge and straightened three times before being packaged with oil for rust prevention. All R&R Bedknives now have an increased front edge grind for added life. All R&R Bedknives are guaranteed against defects in material and workmanship under normal use for the life of the part.:*

40	<b>R94-5885</b>	94-5885	Bedknife - Tournament	1
----	-----------------	---------	-----------------------	---

*Detail Description: R&R Bedknives are manufactured from high carbon-boron alloy steel and then hardened to RC46-49 to match the temper of our reel blades and original equipment reels. Bedknives are surface ground on the top and front edge and straightened three times before being packaged with oil for rust prevention. All R&R Bedknives now have an increased front edge grind for added life. All R&R Bedknives are guaranteed against defects in material and workmanship under normal use for the life of the part.:*

## Blades

All original equipment manufacturers names and part numbers are used for identification purposes only, and we are in no way implying that our products are original equipment parts. Prices subject to change without notice.



# Replaces Toro Greensmaster 1610 Parts

Mower - Model 04039

Reel & Bedknife



Item No	R&R Part No.	OEM Part No.	Description	Qty Req	Order Quantity
41	<b>R121-9531</b>	121-9531	Groomer Blade - Carbide Tipped - Helix 1mm	0	
42	<b>R110-2333</b>	110-2333	Groomer Blade - Helix .028 Thick	0	
<b>Gauges and Controls</b>					
60	<b>R100-1270</b>	100-1270	Sensor - Proximity	1	
<b>Other Parts Available</b>					
70	<b>R112-9278-03</b>	112-9278-03	Bedbar - Aggressive - 26 in	1	
71	<b>R119-4151</b>	119-4151	Screw - Bedknife 5/16-18 x 17/32	16	
72	<b>R110-7370</b>	110-7370	Grass Shield Assy	1	
73	<b>R65-6450</b>	65-6450	Bracket - LH	1	
74	<b>R65-6460</b>	65-6460	Bracket - RH	1	
75	<b>R93-8064</b>	93-8064	Decal - Warning	1	
76	<b>R95-1636</b>	95-1636	Seal - Strip Grass Shield	1	
77	<b>R94-5879</b>	94-5879	Bar - Cut-Off	1	
78	<b>R400106</b>	321-3, 513315, 908002P	Bolt - Hex HD 1/4-20 x 5/8	4	
79	<b>R301504</b>	2296-42, 301504, 32127-24, 32128-33, 32146-17, 3296-16, 3296-42, 3296-42 , 915661P	Locknut - ESNA 1/4-20	6	

All original equipment manufacturers names and part numbers are used for identification purposes only, and we are in no way implying that our products are original equipment parts. Prices subject to change without notice.



# Replaces Toro Greensmaster 1610 Parts

Mower - Model 04039

Reel & Bedknife



Item No	R&R Part No.	OEM Part No.	Description	Qty Req	Order Quantity
80	R3256-22	24-9-BD, 3-1032, 3256-1, 3256-22, 93-0954, 93-0989	Washer - Flat 1/4 Yellow	6	
81	R88-7510	88-7510	Shaft - Extension RH Drum	1	
82	R88-7520	88-7520	Shaft - Extension LH Drum	1	
83	R88-7580	88-7580	Shaft - Transport Wheel LH	1	
84	R88-7590	88-7590	Shaft - Transport Wheel RH	1	
85	R94-5850	94-5850	Spindle - Rear Roller Drum	1	
86	R253-159	253-159	Seal - Drum	2	
87	RA203605	251-82, 6610	Bearing	2	
88	R65-6520	65-6520	Spacer	1	
89	R132-6971	132-6971, 94-5852	Hub-Drum	1	
90	R65-6530	65-6530	Spacer - Seal	1	
91	R322-5	01-178-0508, 20-26-AD, 20-26-AGD, 30-9000, 322-5, 513341, 519755, 908019P, N/A	Bolt - Hex HD 5/16-18 x 1	3	
92	R106-5363	106-5363	Shaft - Adjusting - Bed Bar - Stainless	2	
93	R32120-93	32120-93	Snap Ring - HD	2	

All original equipment manufacturers names and part numbers are used for identification purposes only, and we are in no way implying that our products are original equipment parts. Prices subject to change without notice.



# Replaces Toro Greensmaster 1610 Parts

Mower - Model 04039

Reel & Bedknife



Item No	R&R Part No.	OEM Part No.	Description	Qty Req	Order Quantity
94	<b>R119-4164</b>	119-4164	Washer - Wave	2	
95	<b>R106-5344</b>	106-5344	Bushing - Flanged and Keyed	4	
96	<b>R99-2096</b>	99-2096	Screw - Bed Bar Adjustment - M10 Thrd 1 End	2	
97	<b>R99-2098</b>	99-2098	Washer - Bed Bar Adjuster	2	
98	<b>R119-4156</b>	119-4156	Spring - Compression	2	
99	<b>R33025-00</b>	32025-00, 33025-00	Locknut - 10mm x 1.5 Jam	2	
100	<b>R65-6290</b>	65-6259, 65-6290	Spring-Detent	1	
101	<b>R99-2097</b>	99-2097	Detent - Bed Bar Adjuster	2	
102	<b>R322-26</b>	322-26	Bolt - Hx HD 5/16-18 x 3/8	2	
103	<b>R115-7039</b>	115-7039	Screw - Adjuster - Bedbar	2	
104	<b>R251-318</b>	251-11, 251-204, 251-318, 251-38, 251-89	Bearing - Ball	1	
105	<b>R32151-75</b>	100-6594, 19-4590, 32120-11, 32120-75, 32151-75	Retaining Ring	1	
106	<b>R251-336</b>	251-336	Bearing	2	
107	<b>R32151-89</b>	32151-89	Retaining Ring - Bowed	1	
108	<b>R3254-4</b>	21-3890, 26-8050, 3254-4	Washer - Lock 1/2 Z Int Star	1	

All original equipment manufacturers names and part numbers are used for identification purposes only, and we are in no way implying that our products are original equipment parts. Prices subject to change without notice.



# Replaces Toro Greensmaster 1610 Parts

Mower - Model 04039

Reel & Bedknife



Item No	R&R Part No.	OEM Part No.	Description	Qty Req	Order Quantity
109	R3219-5	01-188-0820, 22-15-BJD, 22-15-BJKD, 3219-5	Nut - 1/2-20	1	
110	R3253-4	01-166-0110, 01-166-0510, 23-10-GD, 24-7170, 30-8520, 3253-4, 48-9350, 48-9360, 48-9570, 68-9420, 99-7577	Washer - Lock 5/16 Zinc	2	
111	R65-8640	65-6090, 65-8640	Housing - Bearing	2	
112	R253-96	253-96	Seal - Oil Single Lip Reel	2	
113	R251-342	251-342	Bearing - Reel	2	
114	R93-9017	93-9017	Rod - RH Basket	1	
115	R93-9018	93-9018	Rod - Basket LH	1	
116	R32151-92	32151-92	Retaining Ring	1	
117	R253-163	253-163	Seal - Reel	2	
118	R92-7302	65-8240, 86-7160, 92-7302	Locknut - Reel	1	
119	R32151-95	32151-90, 32151-95	Retaining Ring	2	
120	R700414	302-11, 302-19, 302-4, 32-8170	Zerk - Grease 1/4-28 45 Deg	2	
121	R132-3841	132-3841	Shaft- Drum Extension - RH	1	

All original equipment manufacturers names and part numbers are used for identification purposes only, and we are in no way implying that our products are original equipment parts. Prices subject to change without notice.



## Replaces Toro Greensmaster 1610 Parts

Mower - Model 04039

Reel & Bedknife



Item No	R&R Part No.	OEM Part No.	Description	Qty Req	Order Quantity
122	<b>R132-3842</b>	132-3842	Shaft- Drum Extension - LH	1	
123	<b>R93-6048</b>	93-6048	Bracket - HOC RH	1	
124	<b>R93-6049</b>	93-6049	Bracket - HOC LH	1	
125	<b>R93-6090</b>	93-6090	Arm - Roller HOC	2	
126	<b>R93-6051</b>	93-6051	Bolt - HOC	2	
127	<b>R3231-5</b>	3231-5	Bolt - Carriage 3/8-16 x 1-3/4	2	
128	<b>R251-338</b>	251-338	Bearing - Ball	2	
129	<b>R322-1</b>	01-178-0504, 20-22-AD, 20-22-AGD, 322-1, 513337	Bolt - Hex HD 5/16-18 x 1/2	2	
130	<b>R32128-21</b>	32128-21	Locknut - Flanged 3/8-16 Whiz Top Lock	2	
131	<b>R3296-39</b>	32127-25, 32128-36, 3290-357, 3296-17, 3296-22, 3296-39, 915663P, 99-7443	Locknut - 3/8-16 Nylon	2	
132	<b>R38-7820</b>	100-1048, 251-277, 251-5, 38-7820	Bearing - Ball	1	
133	<b>R3254-2</b>	3254-2	Washer-Lock, 5/16 Int Star	2	
134	<b>R32144-73</b>	104-2065, 32144-73	Screw - Machine Hex Washer Head	6	
135	<b>R117-9493</b>	117-9493	Bolt - Bed Bar - Hardened	2	

All original equipment manufacturers names and part numbers are used for identification purposes only, and we are in no way implying that our products are original equipment parts. Prices subject to change without notice.





# Replaces Toro Greensmaster 1610 Parts

Mower - Model 04039

Reel & Bedknife



Item No	R&R Part No.	OEM Part No.	Description	Qty Req	Order Quantity
136	R3296-28	119-4154, 140-9234, 32127-34, 32128-7, 32128-8, 32136-7, 3296-28	Nut - 1/2-20 ESNA Jam	2	
137	R52-2860	119-4150, 52-2860	Washer - Bed Bar Pivot	4	
138	R52-2900	52-2900	Washer - Nylon	4	
139	R52-2890	52-2890	Bushing - Flanged	2	
140	R63-9510	63-9480, 63-9510	Bushing - Rubber For Bed Bar	2	
141	R65-8770	65-8770	Bushing	2	
142	R71-1360	251-219, 251-253, 251-254, 251-320, 71-1360, 88-7880, 94-3405	Bearing	2	
143	R3296-33	3296-33	Locknut - 5/8-18 ESNA Jam	1	
144	R322-2	322-2, 513338P	Bolt - Hex HD 5/16-18 x 5/8	2	
145	R3255-8	3255-8	Washer - Lock 5/16 Ext	4	
146	R3290-485	3290-485	Washer - Wave	1	
147	R364170	253-118, 62-3400	Seal	1	
150	R133-8897	121-6355, 133-8897	Recoil Starter Assy	1	
151	RN3922	121-0547	NGK Spark Plug - BR6HS	1	

All original equipment manufacturers names and part numbers are used for identification purposes only, and we are in no way implying that our products are original equipment parts. Prices subject to change without notice.



## Replaces Toro Greensmaster 1610 Parts

Mower - Model 04039

Reel & Bedknife



Item No	R&R Part No.	OEM Part No.	Description	Qty Req	Order Quantity
152	<b>R99-7420</b>	100-8493, 99-7420	Plug-Hole	1	
154	<b>R130-0107</b>	130-0107	Cable Assy - Clutch Control	1	
155	<b>R120-2709</b>	120-2709	Cable- Throttle	1	
156	<b>R115-1714</b>	115-1714	Cable - Brake	1	
157	<b>R94-5870</b>	94-5870	Cable - Clutch Assy	1	
158	<b>R93-9014</b>	65-7020, 92-7676, 93-9014	Pin-Clutch, Actuat	1	

All original equipment manufacturers names and part numbers are used for identification purposes only, and we are in no way implying that our products are original equipment parts. Prices subject to change without notice.