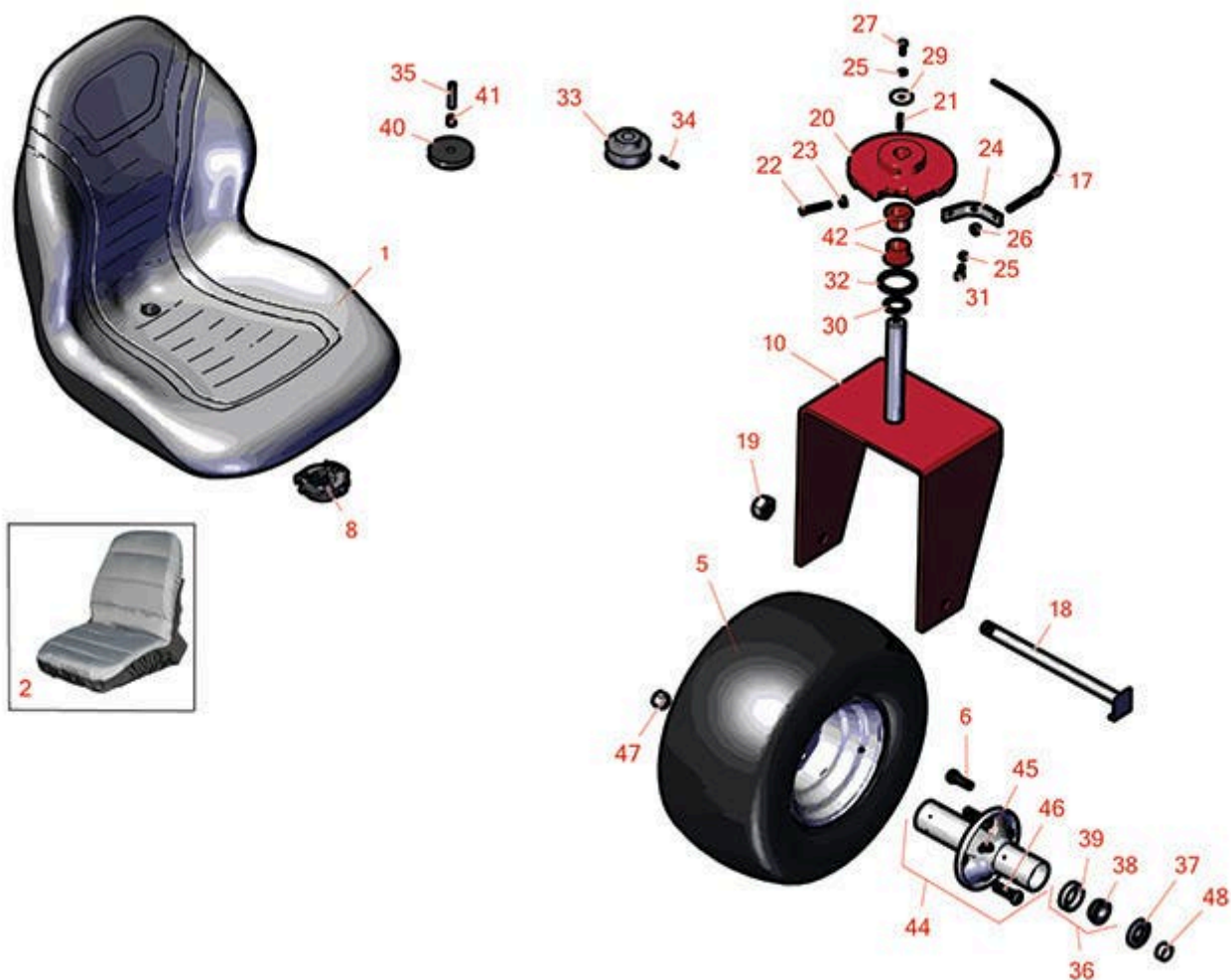




# Replaces Toro Greensmaster 3000 Parts

Traction Unit - Model 04350

Seat & Rear Wheel



All original equipment manufacturers names and part numbers are used for identification purposes only, and we are in no way implying that our products are original equipment parts. Prices subject to change without notice.



# Replaces Toro Greensmaster 3000 Parts

Traction Unit - Model 04350

Seat & Rear Wheel



Item No	R&R Part No.	OEM Part No.	Description	Qty Req	Order Quantity
---------	--------------	--------------	-------------	---------	----------------

1	RMXB200GY	100-3187, 104-4620, 104-7620, 21-4880, 351-59, 351-76, 49-8130, 63-9410, 66-5400, 75-9190, 750105, 92-6280, MXB200GY	Milsco Seat XB200 - Grey	1	
---	-----------	--	--------------------------	---	--

*Tech Note: This seat will not accept seat belts:*

*Detail Description: The Milsco XB200 high back seat features a comfortable vacuum formed, waterproof vinyl cover with central drain hole. Ergonomic foam cushion provides operator comfort. Cover will not crack or peel. Rugged blow-molded plastic frame construction. Allows for Twist-in operator presence switch. Seat: 19in W x 24in D x 21in H. Multiple pre-drilled mounting patterns. Grey. Made in U.S.A.<BR>Please note: Due to excessive air freight charges, this item will be shipped ground freight.:*

2	R120-5179	120-5179	Large Seat Cover - Gray	1	
---	-----------	----------	-------------------------	---	--

## Tires

0	TIRES		<a href="#">Click Here to View Complete Tire Selection</a>	0	
---	-------	--	--	---	--

5	R150314		Tire & Wheel - 18x9.50-8 (2 Ply) Carlisle Smooth	2	
---	---------	--	--	---	--

5	R217-60	217-60, 242-49	Wheel - with Valve Stem - White	2	
---	---------	-------------------	---------------------------------	---	--

6	R232-24	232-24, 232-35	Stem - Valve w/ Cap	2	
---	---------	-------------------	---------------------	---	--

## Gauges and Controls

8	R151541	R&R ON, LY	Delta Seat Switch - Twist Mount 1 Pole Normally Open	1	
---	---------	---------------	---	---	--

All original equipment manufacturers names and part numbers are used for identification purposes only, and we are in no way implying that our products are original equipment parts. Prices subject to change without notice.



## Replaces Toro Greensmaster 3000 Parts

Traction Unit - Model 04350

Seat & Rear Wheel



Item No	R&R Part No.	OEM Part No.	Description	Qty Req	Order Quantity
<b>Other Parts Available</b>					
10	<b>R62-2220</b>	62-2220	Caster Fork - Fits GM3000	1	
17	<b>R62-2180</b>	62-2180	Cable - Steering Fits GM3000	1	
18	<b>R5-3934</b>	5-3934	Bolt - Steering Caster Fork	1	
19	<b>R3296-67</b>	3296-67	Locknut - 3/4-16 Heavy Jam RH Thread	1	
20	<b>R61-9390</b>	61-9390	Drum - Steering 1-3/8 Bore	1	
21	<b>R5-0698</b>	21-704-0521, 32-504-0801, 5-0698, 65-004-1841, 66-004-2291, 67-004-1401, 80-004-0341, 82-004-1171, 83-004-0431	Key - 1/4 x 1/4 x 1-1/8	1	
22	<b>R3242-9</b>	3242-9	Screw - Sq. HD Set 5/16-18	1	
23	<b>R443106</b>	01-188-0518, 22-12-AJD, 32111-4, 3217-4, 3217-6, 3218-2, 513295, 513412, 915112P, 915978, 915979	Nut - 5/16-18 Y/Zinc Plated	1	
24	<b>R3-8516</b>	3-8516	Anchor - Steering Drum Cable	1	

All original equipment manufacturers names and part numbers are used for identification purposes only, and we are in no way implying that our products are original equipment parts. Prices subject to change without notice.



# Replaces Toro Greensmaster 3000 Parts

Traction Unit - Model 04350

Seat & Rear Wheel



Item No	R&R Part No.	OEM Part No.	Description	Qty Req	Order Quantity
25	R3253-4	01-166-0110, 01-166-0510, 23-10-GD, 24-7170, 30-8520, 3253-4, 48-9350, 48-9360, 48-9570, 68-9420, 99-7577	Washer - Lock 5/16 Zinc	6	
26	R444754	01-189-0518, 3296-4	Locknut - 5/16-24 Center	2	
27	R321-4	01-150-1030, 01-178-0406, 20-3-AGD, 321-4, 3222-1	Bolt - Hex HD 1/4-20 x 3/4	1	
27	R400184	322-2, 322-3	Screw - 5/16-18 x 3/4 Hex	1	
29	R62-2190	62-2190	Washer	1	
30	R62-2170	62-2170	Washer - Thrust	1	
31	R322-5	01-178-0508, 20-26-AD, 20-26-AGD, 30-9000, 322-5, 513341, 519755, 908019P, N/A	Bolt - Hex HD 5/16-18 x 1	1	
32	R237-148	237-148	Seal - Steering Fork	1	
33	R62-2160	62-2160	Pulley - Fits Gm 3000	1	
34	R32121-34	32121-34	Pin - Roll 3/16 x 1-1/2	1	
35	R10-7240	10-7240	Spacer - Steering Pulley	1	

All original equipment manufacturers names and part numbers are used for identification purposes only, and we are in no way implying that our products are original equipment parts. Prices subject to change without notice.



# Replaces Toro Greensmaster 3000 Parts

Traction Unit - Model 04350

Seat & Rear Wheel



Item No	R&R Part No.	OEM Part No.	Description	Qty Req	Order Quantity
36	<b>R500534</b>	1-633585	Bearing - with Cup	1	
<i>Detail Description: Kit includes: 1 ea R254-78- Bearing Cone &amp; R254-79 Bearing Cone:</i>					
37	<b>R253-111</b>	253-108, 253-111	Seal	2	
38	<b>R254-78</b>	01-102-0060, 01-102-0130, 1-633585, 254-78, 32-7790, 32-9580, 93-4813	Tapered Bearing Cone	2	
39	<b>R254-79</b>	01-103-0060, 01-103-0130, 1-633584, 252-106, 254-79, 32-7800, 32-9590	Cup - Bearing	2	
<i>Detail Description: Use R254-79M installation mandrel to properly install race.:</i>					
40	<b>R5-2653</b>	5-2653	Pulley - Idler Steering Cable	4	
41	<b>R256-2</b>	256-2	Bushing - Idler Pulley	4	
42	<b>R256-290</b>	256-290	Bushing - Fits GM3M Only	2	
44	<b>R75-9440</b>	217-95, 75-9440	Hub - Rear Wheel - Incl Wheel Studs	1	
<i>Detail Description: Hub includes 4ea R10-6830 Wheel Studs:</i>					

All original equipment manufacturers names and part numbers are used for identification purposes only, and we are in no way implying that our products are original equipment parts. Prices subject to change without notice.



# Replaces Toro Greensmaster 3000 Parts

Traction Unit - Model 04350

Seat & Rear Wheel



Item No	R&R Part No.	OEM Part No.	Description	Qty Req	Order Quantity
45	R302-5	21-6010, 302-11, 302-37, 302-47, 302-5, 302-57, 302-58, 302-6, 31-0300, 32-9660, 60-0800, 62-3880, 92-4181	Fitting - Grease	1	
46	R10-6830	10-6830	Stud - 1/2-20 x 1 3/4	4	
47	R242-50	242-50	Nut - 1/2-20 Wheel	4	
48	R74-3730	217-96, 74-3730	Spacer	1	

All original equipment manufacturers names and part numbers are used for identification purposes only, and we are in no way implying that our products are original equipment parts. Prices subject to change without notice.