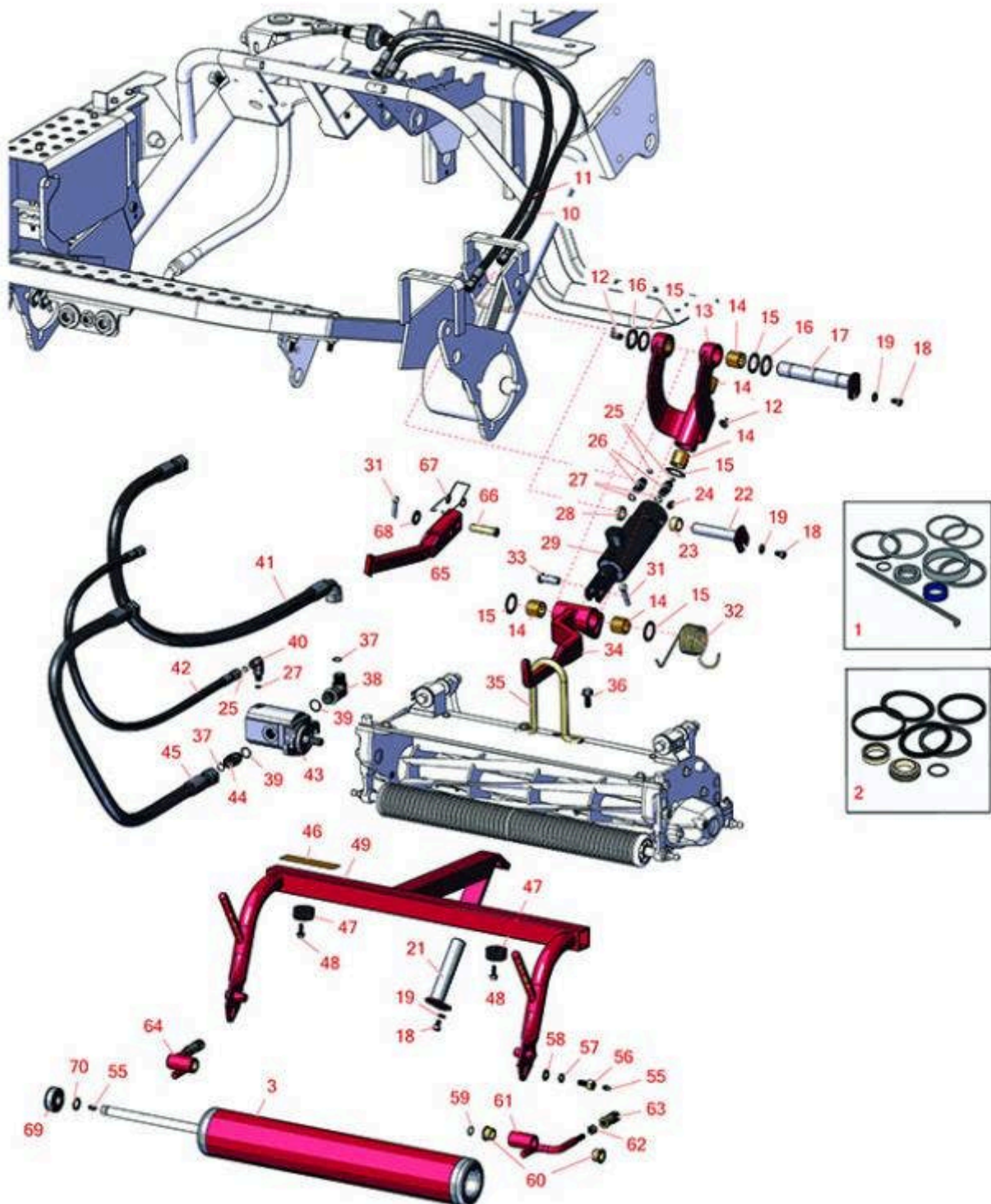




# Replaces Toro Greensmaster 3150-Q

## Parts

Traction Unit  
Left Pull Frame



All original equipment manufacturers names and part numbers are used for identification purposes only, and we are in no way implying that our products are original equipment parts. Prices subject to change without notice.



# Replaces Toro Greensmaster 3150-Q

## Parts

Traction Unit

Left Pull Frame



Item No	R&R Part No.	OEM Part No.	Description	Qty Req	Order Quantity
---------	--------------	--------------	-------------	---------	----------------

### Overhaul Kits

1	<b>R107-2564</b>	107-2564	Seal Kit - Fits 107-1981 Hyd Cyl	1	
2	<b>R132-9515</b>	132-9515	Seal Kit Fits 131-2787 Cyl	1	

### Roller

3	<b>R133-2337</b>	133-2337	Roller Assy	1	
---	------------------	----------	-------------	---	--

### Other Parts Available

10	<b>R108-6508</b>	108-6508	Hydraulic Hose Assy	1	
11	<b>R108-6507</b>	108-6507	Hydraulic Hose Assy	1	
12	<b>R323016</b>	302-33, 323016	1/8"-NPT 90 Degree Grease Fitting	1	

*Tech Note: Fits Models 04357/2002-2011 & 04358/2012 & Newer:*

12	<b>R302-60</b>	302-60	Zerk - Grease 90 Deg.	1	
----	----------------	--------	-----------------------	---	--

*Tech Note: Fits Model 04357/2006:*

13	<b>R10-7820</b>	10-7820	Pivot Hinge Assy	1	
----	-----------------	---------	------------------	---	--

14	<b>R3-0348</b>	3-0348	Bushing	6	
----	----------------	--------	---------	---	--

*Tech Note: Fits Models 04357/2002-2011 & 04358/2012:*

14	<b>R125-5196</b>	125-5196	Bushing - Copper Coated	6	
----	------------------	----------	-------------------------	---	--

*Tech Note: Fits Model 04358/2013 & Newer:*

15	<b>R10-8110</b>	10-8110	Washer - Pivot Pin	6	
----	-----------------	---------	--------------------	---	--

16	<b>R5-1226</b>	5-1226	Spacer	2	
----	----------------	--------	--------	---	--

17	<b>R114-4683</b>	114-4683	Pin - Hinge 6-1/4 Long w/ No Zerk	1	
----	------------------	----------	-----------------------------------	---	--

*Tech Note: Fits Models 04357/2008-2011 & 04358/2012 & Newer:*

All original equipment manufacturers names and part numbers are used for identification purposes only, and we are in no way implying that our products are original equipment parts. Prices subject to change without notice.



# Replaces Toro Greensmaster 3150-Q

## Parts

*Traction Unit  
Left Pull Frame*



Item No	R&R Part No.	OEM Part No.	Description	Qty Req	Order Quantity
17	<b>R10-6110</b>	10-6110	Pin - Hinge 6 1/4 Long w/No Zerk	1	
<i>Tech Note: Fits Model 04357/2002-2007:</i>					
18	<b>R322-1</b>	01-178-0504, 20-22-AD, 20-22-AGD, 322-1, 513337	Bolt - Hex HD 5/16-18 x 1/2	3	
19	<b>R453009</b>	01-166-0400, 24-10-BD, 24-9-AD, 32-9650, 3256-2, 3256-23, 3256-3, 3256-67, 3290-217, 3556-3, 4-2390, 7-0152	Washer - Flat 5/16 SAE	3	
21	<b>R10-6090</b>	10-6090	Pin - Pivot 4 7/8 Long	1	
22	<b>R10-6060</b>	10-6060, 120-3199, 140-5248	Pin - Pivot 3-7/8 Long	1	
22	<b>R115-3259</b>	115-3259	Pin - Hinge Assy w/90 Deg Zerk	1	
23	<b>R74-3730</b>	217-96, 74-3730	Spacer	1	
24	<b>R471219</b>	30-8360, 302-2, 302-24, 302-31, 302-52	Zerk - Grease	1	
25	<b>R237-21</b>	237-21, 327-21	O-Ring	3	
26	<b>R340-92</b>	340-92	Hydraulic Fitting - Striaight	2	

All original equipment manufacturers names and part numbers are used for identification purposes only, and we are in no way implying that our products are original equipment parts. Prices subject to change without notice.



# Replaces Toro Greensmaster 3150-Q

## Parts

Traction Unit  
Left Pull Frame



Item No	R&R Part No.	OEM Part No.	Description	Qty Req	Order Quantity
27	<b>R237-22</b>	107-8844, 237-22, 237-78	O-Ring	3	
28	<b>R105-3828</b>	105-3828	Spacer - Lift Cyl	1	
29	<b>R106-9066</b>	106-9066	Hydraulic Cylinder - LH / RH	1	
<i>Tech Note: Fits Model 04357/2004-2011-04358/2012-2015:</i>					
29	<b>R105-3822</b>	105-3822, 83-2580, 99-8159	Hydraulic Cylinder - Front	1	
<i>Tech Note: Fits Model 04357/2002-2003:</i>					
29	<b>R131-2787</b>	131-2787	Hyd Cylinder Assy	1	
<i>Tech Note: Fits Ser# 400000000 and Up:</i>					
31	<b>R3272-11</b>	01-151-0010, 01-151-0040, 28-18-D, 28-28-D, 3211-72, 3272-11	Pin - Cotter	1	
<i>Tech Note: Fits Model 04357/2002-2010:</i>					
32	<b>R110-3952</b>	106-9079, 110-3952	Spring - Torsion - LH	1	
33	<b>R283-8</b>	17-3670, 283-8, Jul-35	Clevis Pin - 1/2 x 1-27/64	1	
34	<b>R107-2598</b>	107-2598	Lift Arm Assy - LH	1	
34	<b>R62-2460</b>	62-2460	Arm - Lift LH	1	
<i>Tech Note: Fits Model 04357/2002-2003:</i>					
35	<b>R105-5740</b>	105-5740	Hook - Lift	1	

All original equipment manufacturers names and part numbers are used for identification purposes only, and we are in no way implying that our products are original equipment parts. Prices subject to change without notice.



# Replaces Toro Greensmaster 3150-Q

## Parts

*Traction Unit  
Left Pull Frame*



Item No	R&R Part No.	OEM Part No.	Description	Qty Req	Order Quantity
36	<b>R33115-025</b>	33115-025, 48-7780	Bolt - Hex HD M10-1.5 x 25	2	
37	<b>R237-30</b>	23-6320, 237-30	O-Ring - Seal	2	
38	<b>R340-98</b>	340-98	Hydraulic Fitting	1	
39	<b>R237-79</b>	237-79	O-Ring	2	
40	<b>R340-132</b>	340-132	Hydraulic Fitting - 90 Deg	1	
41	<b>R95-2909</b>	93-2263, 95-2909	Hydraulic Hose Assy - Reel Motor	1	
42	<b>R106-9674</b>	106-9674	Hydraulic Hose Assy	1	
43	<b>R120-2072</b>	100-6426, 108-6487, 112-9200, 120-2072, 93-1375	Hydraulic Gear Motor	1	
<i>Tech Note: Fits Model 04357/2007-2011 &amp; 04358:</i>					
44	<b>R340-4</b>	340-4	Hydraulic Fitting - Male Connector	1	
45	<b>R95-2908</b>	105-5403, 93-2262, 95-2908	Hydraulic Hose Assy - Reel Motor	1	
46	<b>R67-7960</b>	27-2890, 62-5070, 67-7960	Decal - Warning	1	
<i>Tech Note: Fits Model 04357/2006:</i>					
46	<b>R93-6688</b>	93-6688	Decal - Warning	1	
<i>Tech Note: Fits Model 04357/2007-2011 &amp; 04358/2012 &amp; Newer:</i>					
47	<b>R94-4548</b>	94-4548	Rubber Bumper	2	

All original equipment manufacturers names and part numbers are used for identification purposes only, and we are in no way implying that our products are original equipment parts. Prices subject to change without notice.



# Replaces Toro Greensmaster 3150-Q

## Parts

*Traction Unit*

*Left Pull Frame*



Item No	R&R Part No.	OEM Part No.	Description	Qty Req	Order Quantity
48	<b>R49-2040</b>	32104-42, 32104-95, 32144-44, 49-2040	Bolt - Hex Washer 1/4-20 x 3/4	2	
49	<b>R112-0283</b>	108-8632, 112-0283, 117-9542	Frame - Pull LH	1	
49	<b>R86-9810</b>	104-2054, 104-2064, 86-9810, 86-9810-01, 92-9176, 92-9176-01, Oct-10	Frame - Pull LH	1	
<i>Tech Note: Fits Model 04357/2002-2006:</i>					
55	<b>R302-5</b>	21-6010, 302-11, 302-37, 302-47, 302-5, 302-57, 302-58, 302-6, 31-0300, 32-9660, 60-0800, 62-3880, 92-4181	Fitting - Grease	4	
56	<b>R11-0160</b>	11-0160	Screw - Roller Shaft	2	
57	<b>R3253-21</b>	215-51, 30-8470, 3253-21, Jul-12	Washer - Lock 3/8	2	

All original equipment manufacturers names and part numbers are used for identification purposes only, and we are in no way implying that our products are original equipment parts. Prices subject to change without notice.



# Replaces Toro Greensmaster 3150-Q

## Parts

*Traction Unit  
Left Pull Frame*



Item No	R&R Part No.	OEM Part No.	Description	Qty Req	Order Quantity
58	<b>R453011</b>	01-166-0100, 01-166-0120, 01-166-0270, 01-166-0500, 01-166-0600, 01-166-0620, 132-4593, 2356-3, 237-12, 24-10-AD, 24-11-AD, 24-11-BD, 24-12-AD, 24-12-BD, 30-9310, 32-8190, 3256-24, 3256-3, 3256-36, 3256-4, 453011, 47-9950, 48-9220, 513458, 7-0052	Washer - Flat 3/8 SAE Y/Zinc	2	
59	<b>R3290-317</b>	3290-317	Washer - Wave	2	
60	<b>R3-1506</b>	256-287, 3-1506, 75-2160, Apr-50	Bushing - Bronze	4	
<i>Tech Note: Fits Model 04357/2006-2011 &amp; 04358/2012:</i>					
60	<b>R125-5178</b>	125-5178	Bushing - Sintered Iron	4	
<i>Tech Note: Fits Model 04358/2013 &amp; Newer:</i>					
61	<b>R92-0586</b>	138-6311, 92-0586	Arm - Pull LH w/Bushings	1	
62	<b>R3220-3</b>	01-191-0624, 3220-3, 3290-149	Nut - Jam Ball Joint	2	

All original equipment manufacturers names and part numbers are used for identification purposes only, and we are in no way implying that our products are original equipment parts. Prices subject to change without notice.



# Replaces Toro Greensmaster 3150-Q Parts

Traction Unit  
Left Pull Frame



Item No	R&R Part No.	OEM Part No.	Description	Qty Req	Order Quantity
63	<b>R99-1460</b>	2411-28, 2411-29, 2411-30, 2411-8, 8-7710, 94-2959, 99-1460	Receiver - Ball Joint	2	
64	<b>R92-0585</b>	138-6303, 92-0585	Arm - Pull RH - w/Bushings	1	
65	<b>R94-5586-01</b>	94-5586, 94-5586-01	Bar - Lift LH	1	
<i>Tech Note: Fits Model 04357/2002-2003:</i>					
66	<b>R63-8750</b>	57-7630, 63-8750	Clevis Pin	1	
<i>Tech Note: Fits Model 04357/2002-2003:</i>					
67	<b>R57-7650</b>	57-7650	Spring - Torsion Lift Arm	1	
<i>Tech Note: Fits Model 04357/2002-2003:</i>					
68	<b>R3256-26</b>	01-166-0540, 01-166-0820, 17-2530, 24-13-BD, 30-8570, 3256-26, 356206, 48-9390	Washer - 1/2 in	1	
<i>Tech Note: Fits Model 04357/2002-2003:</i>					
69	<b>R133-2378</b>	133-2378	Bearing - Roller	2	
70	<b>R253-83</b>	253-83	Seal - Oil 7/8 OD x 5/8 ID	2	

All original equipment manufacturers names and part numbers are used for identification purposes only, and we are in no way implying that our products are original equipment parts. Prices subject to change without notice.