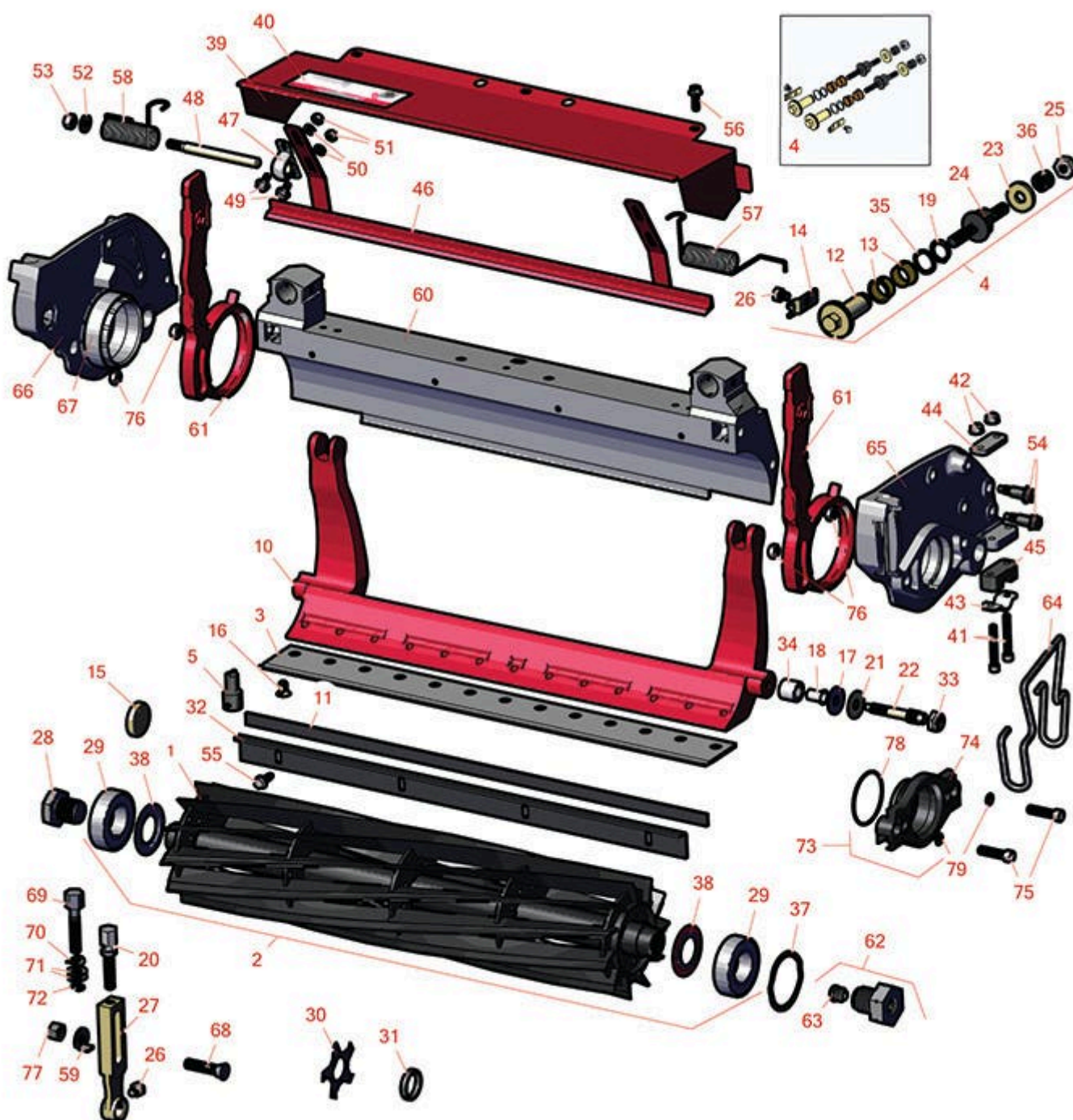




# Replaces Toro Greensmaster eTriFlex 3360 Parts

DPA Cutting Unit - Models 04651, 04653 & 04655  
Reel & Bedknife



All original equipment manufacturers names and part numbers are used for identification purposes only, and we are in no way implying that our products are original equipment parts. Prices subject to change without notice.



# Replaces Toro Greensmaster eTriFlex 3360 Parts

DPA Cutting Unit - Models 04651, 04653 & 04655  
Reel & Bedknife



Item No	R&R Part No.	OEM Part No.	Description	Qty Req	Order Quantity
---------	--------------	--------------	-------------	---------	----------------

## R&R Reels, Lifetime Guaranteed

1	<b>R119-4103</b>	119-4103	Reel - 8 Blade	1
---	------------------	----------	----------------	---

*Detail Description: R&R Reel blades are manufactured from high carbon-boron alloy steel and then hardened to RC46-49 to match the temper of our bedknives and original equipment bedknives. All R&R Reels are cylindrically ground on bearing surfaces and then relief ground. Reels are then precision computer balanced for extended bearing and reel life. R&R Products Reels are guaranteed against defects in material and workmanship for the life of the reel under normal use.:*

1	<b>R127-2200</b>	127-2200	Reel - 8 Blade Low Drag	1
---	------------------	----------	-------------------------	---

*Tech Note: Low Drag:*

*Detail Description: R&R Reel blades are manufactured from high carbon-boron alloy steel and then hardened to RC46-49 to match the temper of our bedknives and original equipment bedknives. All R&R Reels are cylindrically ground on bearing surfaces and then relief ground. Reels are then precision computer balanced for extended bearing and reel life. R&R Products Reels are guaranteed against defects in material and workmanship for the life of the reel under normal use.:*

1	<b>R132-7340</b>	132-7340	Reel - 8 Blade Razor Series Low Drag	1
---	------------------	----------	--------------------------------------	---

*Detail Description: R&R Razor Reels are manufactured from a special high alloy steel and then hardened to RC48-51 to match the temper of our Razor bedknives and original equipment premium series bedknives. All R&R Reels are cylindrically ground on bearing surfaces, relief ground and precision computer balanced for extended bearing and reel life. R&R Products Reels are guaranteed against defects in material and workmanship for the life of the reel under normal use. You can expect up to double the life from Razor reels over standard reels.:*

1	<b>R119-4104</b>	119-4104	Reel - 11 Blade	1
---	------------------	----------	-----------------	---

*Detail Description: R&R Reel blades are manufactured from high carbon-boron alloy steel and then hardened to RC46-49 to match the temper of our bedknives and original equipment bedknives. All R&R Reels are cylindrically ground on bearing surfaces and then relief ground. Reels are then precision computer balanced for extended bearing and reel life. R&R Products Reels are guaranteed against defects in material and workmanship for the life of the reel under normal use.:*

1	<b>R127-2201</b>	127-2201	Reel - 11 Blade Low Drag	1
---	------------------	----------	--------------------------	---

*Tech Note: Low Drag:*

All original equipment manufacturers names and part numbers are used for identification purposes only, and we are in no way implying that our products are original equipment parts. Prices subject to change without notice.



# Replaces Toro Greensmaster eTriFlex 3360 Parts

DPA Cutting Unit - Models 04651, 04653 & 04655  
Reel & Bedknife



Item No	R&R Part No.	OEM Part No.	Description	Qty Req	Order Quantity
---------	--------------	--------------	-------------	---------	----------------

*Detail Description:* R&R Reel blades are manufactured from high carbon-boron alloy steel and then hardened to RC46-49 to match the temper of our bedknives and original equipment bedknives. All R&R Reels are cylindrically ground on bearing surfaces and then relief ground. Reels are then precision computer balanced for extended bearing and reel life. R&R Products Reels are guaranteed against defects in material and workmanship for the life of the reel under normal use.:

1	<b>R132-7341</b>	132-7341	Reel - 11 Blade Razor Series Low Drag 21	1
---	------------------	----------	---	---

*Detail Description:* R&R Razor Reels are manufactured from a special high alloy steel and then hardened to RC48-51 to match the temper of our Razor bedknives and original equipment premium series bedknives. All R&R Reels are cylindrically ground on bearing surfaces, relief ground and precision computer balanced for extended bearing and reel life. R&R Products Reels are guaranteed against defects in material and workmanship for the life of the reel under normal use. You can expect up to double the life from Razor reels over standard reels.:

1	<b>R119-4105</b>	119-4105	Reel - 14 Blade	1
---	------------------	----------	-----------------	---

*Detail Description:* R&R Reel blades are manufactured from high carbon-boron alloy steel and then hardened to RC46-49 to match the temper of our bedknives and original equipment bedknives. All R&R Reels are cylindrically ground on bearing surfaces and then relief ground. Reels are then precision computer balanced for extended bearing and reel life. R&R Products Reels are guaranteed against defects in material and workmanship for the life of the reel under normal use.:

1	<b>R127-2202</b>	127-2202	Reel - 14 Blade Low Drag 21	1
---	------------------	----------	-----------------------------	---

*Tech Note:* Low Drag:

*Detail Description:* R&R Reel blades are manufactured from high carbon-boron alloy steel and then hardened to RC46-49 to match the temper of our bedknives and original equipment bedknives. All R&R Reels are cylindrically ground on bearing surfaces and then relief ground. Reels are then precision computer balanced for extended bearing and reel life. R&R Products Reels are guaranteed against defects in material and workmanship for the life of the reel under normal use.:

1	<b>R132-7342</b>	132-7342	Reel - 14 Blade Razor Series Low Drag 21	1
---	------------------	----------	---	---

*Detail Description:* R&R Razor Reels are manufactured from a special high alloy steel and then hardened to RC48-51 to match the temper of our Razor bedknives and original equipment premium series bedknives. All R&R Reels are cylindrically ground on bearing surfaces, relief ground and precision computer balanced for extended bearing and reel life. R&R Products Reels are guaranteed against defects in material and workmanship for the life of the reel under normal use. You can expect up to double the life from Razor reels over standard reels.:

All original equipment manufacturers names and part numbers are used for identification purposes only, and we are in no way implying that our products are original equipment parts. Prices subject to change without notice.



# Replaces Toro Greensmaster eTriFlex 3360 Parts

DPA Cutting Unit - Models 04651, 04653 & 04655  
Reel & Bedknife



Item No	R&R Part No.	OEM Part No.	Description	Qty Req	Order Quantity
---------	--------------	--------------	-------------	---------	----------------

## R&R Razor Reels, Lifetime Guaranteed

2	<b>R137-8511</b>	137-8511	Reel - 8 Blade Razor Series w/Bearings and Seals 21x5	1	
---	------------------	----------	---	---	--

*Detail Description: R&R Razor Reels are manufactured from a special high alloy steel and then hardened to RC48-51 to match the temper of our Razor bedknives and original equipment premium series bedknives. All R&R Reels are cylindrically ground on bearing surfaces, relief ground and precision computer balanced for extended bearing and reel life. R&R Products Reels are guaranteed against defects in material and workmanship for the life of the reel under normal use. You can expect up to double the life from Razor reels over standard reels.:*

2	<b>R137-8512</b>	137-8512	Reel - 11 Blade Razor Series w/Bearings and Seals 21x5	1	
---	------------------	----------	--	---	--

*Detail Description: R&R Razor Reels are manufactured from a special high alloy steel and then hardened to RC48-51 to match the temper of our Razor bedknives and original equipment premium series bedknives. All R&R Reels are cylindrically ground on bearing surfaces, relief ground and precision computer balanced for extended bearing and reel life. R&R Products Reels are guaranteed against defects in material and workmanship for the life of the reel under normal use. You can expect up to double the life from Razor reels over standard reels.:*

2	<b>R137-8513</b>	137-8513	Reel - 14 Blade Razor Series w/Bearings and Seals 21x5	1	
---	------------------	----------	--	---	--

*Detail Description: R&R Razor Reels are manufactured from a special high alloy steel and then hardened to RC48-51 to match the temper of our Razor bedknives and original equipment premium series bedknives. All R&R Reels are cylindrically ground on bearing surfaces, relief ground and precision computer balanced for extended bearing and reel life. R&R Products Reels are guaranteed against defects in material and workmanship for the life of the reel under normal use. You can expect up to double the life from Razor reels over standard reels.:*

## R&R Bedknife, Lifetime Guaranteed

3	<b>R108-4302</b>	108-4301, 108-4302	Bedknife - Tournament Cut Extended .125 - .500 HOC	1	
---	------------------	-----------------------	--	---	--

*Detail Description: R&R Bedknives are manufactured from high carbon-boron alloy steel and then hardened to RC46-49 to match the temper of our reel blades and original equipment reels. Bedknives are surface ground on the top and front edge and straightened three times before being packaged with oil for rust prevention. All R&R Bedknives now have an increased front edge grind for added life. All R&R Bedknives are guaranteed against defects in material and workmanship under normal use for the life of the part.:*

3	<b>R108-4303</b>	104-7720, 108-4303	Bedknife - Micro Cut Extended .062 - .187 HOC	1	
---	------------------	-----------------------	---	---	--

All original equipment manufacturers names and part numbers are used for identification purposes only, and we are in no way implying that our products are original equipment parts. Prices subject to change without notice.





# Replaces Toro Greensmaster eTriFlex 3360 Parts

DPA Cutting Unit - Models 04651, 04653 & 04655  
Reel & Bedknife



Item No	R&R Part No.	OEM Part No.	Description	Qty Req	Order Quantity
---------	--------------	--------------	-------------	---------	----------------

*Detail Description:* R&R Bedknives are manufactured from high carbon-boron alloy steel and then hardened to RC46-49 to match the temper of our reel blades and original equipment reels. Bedknives are surface ground on the top and front edge and straightened three times before being packaged with oil for rust prevention. All R&R Bedknives now have an increased front edge grind for added life. All R&R Bedknives are guaranteed against defects in material and workmanship under normal use for the life of the part.:

3	<b>R150466</b>	63-8600, 64-6393, 94-6393	Bedknife - Super Thick .312 - 1.00 HOC	1	
---	----------------	---------------------------------	---	---	--

*Detail Description:* R&R Bedknives are manufactured from high carbon-boron alloy steel and then hardened to RC46-49 to match the temper of our reel blades and original equipment reels. Bedknives are surface ground on the top and front edge and straightened three times before being packaged with oil for rust prevention. All R&R Bedknives now have an increased front edge grind for added life. All R&R Bedknives are guaranteed against defects in material and workmanship under normal use for the life of the part.:

3	<b>R93-4262</b>	65-8250, 93-4262, 93-4263	Bedknife - Micro Cut .062 - .187 HOC	1	
---	-----------------	---------------------------------	---	---	--

*Detail Description:* R&R Bedknives are manufactured from high carbon-boron alloy steel and then hardened to RC46-49 to match the temper of our reel blades and original equipment reels. Bedknives are surface ground on the top and front edge and straightened three times before being packaged with oil for rust prevention. All R&R Bedknives now have an increased front edge grind for added life. All R&R Bedknives are guaranteed against defects in material and workmanship under normal use for the life of the part.:

3	<b>R93-4264</b>	57-4960, 63-8470, 93-4264	Bedknife - Low Cut .187 - 1.00 HOC	1	
---	-----------------	---------------------------------	---------------------------------------	---	--

*Detail Description:* R&R Bedknives are manufactured from high carbon-boron alloy steel and then hardened to RC46-49 to match the temper of our reel blades and original equipment reels. Bedknives are surface ground on the top and front edge and straightened three times before being packaged with oil for rust prevention. All R&R Bedknives now have an increased front edge grind for added life. All R&R Bedknives are guaranteed against defects in material and workmanship under normal use for the life of the part.:

3	<b>R93-4263</b>	63-8560, 66-9320, 93-4263, 93-6039	Bedknife - Tournament Cut .125 - .500 HOC	1	
---	-----------------	---	--	---	--

All original equipment manufacturers names and part numbers are used for identification purposes only, and we are in no way implying that our products are original equipment parts. Prices subject to change without notice.



# Replaces Toro Greensmaster eTriFlex 3360 Parts

DPA Cutting Unit - Models 04651, 04653 & 04655  
Reel & Bedknife



Item No	R&R Part No.	OEM Part No.	Description	Qty Req	Order Quantity
---------	--------------	--------------	-------------	---------	----------------

*Detail Description: R&R Bedknives are manufactured from high carbon-boron alloy steel and then hardened to RC46-49 to match the temper of our reel blades and original equipment reels. Bedknives are surface ground on the top and front edge and straightened three times before being packaged with oil for rust prevention. All R&R Bedknives now have an increased front edge grind for added life. All R&R Bedknives are guaranteed against defects in material and workmanship under normal use for the life of the part.:*

3	<b>R94-6392</b>	62-2500, 94-6392	Bedknife - High Cut .312 - 1.00 HOC	1	
---	-----------------	---------------------	--	---	--

*Detail Description: R&R Bedknives are manufactured from high carbon-boron alloy steel and then hardened to RC46-49 to match the temper of our reel blades and original equipment reels. Bedknives are surface ground on the top and front edge and straightened three times before being packaged with oil for rust prevention. All R&R Bedknives now have an increased front edge grind for added life. All R&R Bedknives are guaranteed against defects in material and workmanship under normal use for the life of the part.:*

3	<b>R63-8610</b>	63-8610	Bedknife - Fairway Cut .375 - 1.00 HOC	1	
---	-----------------	---------	---	---	--

*Detail Description: R&R Bedknives are manufactured from high carbon-boron alloy steel and then hardened to RC46-49 to match the temper of our reel blades and original equipment reels. Bedknives are surface ground on the top and front edge and straightened three times before being packaged with oil for rust prevention. All R&R Bedknives now have an increased front edge grind for added life. All R&R Bedknives are guaranteed against defects in material and workmanship under normal use for the life of the part.:*

3	<b>R94-6396</b>	10-4900, 54-9150, 94-6396, Oct-00	Bedknife - High Cut 5/16"-1" HOC	1	
---	-----------------	--	-------------------------------------	---	--

*Detail Description: R&R Bedknives are manufactured from high carbon-boron alloy steel and then hardened to RC46-49 to match the temper of our reel blades and original equipment reels. Bedknives are surface ground on the top and front edge and straightened three times before being packaged with oil for rust prevention. All R&R Bedknives now have an increased front edge grind for added life. All R&R Bedknives are guaranteed against defects in material and workmanship under normal use for the life of the part.:*

3	<b>R150462</b>	63-8610, 94-6396	Bedknife - 7 Hole Thick 5/16	1	
---	----------------	---------------------	------------------------------	---	--

All original equipment manufacturers names and part numbers are used for identification purposes only, and we are in no way implying that our products are original equipment parts. Prices subject to change without notice.



# Replaces Toro Greensmaster eTriFlex

## 3360 Parts

DPA Cutting Unit - Models 04651, 04653 & 04655

Reel & Bedknife



Item No	R&R Part No.	OEM Part No.	Description	Qty Req	Order Quantity
---------	--------------	--------------	-------------	---------	----------------

*Detail Description:* R&R Bedknives are manufactured from high carbon-boron alloy steel and then hardened to RC46-49 to match the temper of our reel blades and original equipment reels. Bedknives are surface ground on the top and front edge and straightened three times before being packaged with oil for rust prevention. All R&R Bedknives now have an increased front edge grind for added life. All R&R Bedknives are guaranteed against defects in material and workmanship under normal use for the life of the part.:

### R&R Razor Tool Steel Bedknives, Lifetime Guaranteed

3	<b>R115-1881</b>	115-1881	Bedknife - Razor Tool Steel - 21 Tournament Cut .125 - .500 HOC	1
---	------------------	----------	---	---

*Detail Description:* R&R Razor bedknives are manufactured from premium alloy tool steel steel and then hardened to RC48-51 to match the temper of our Razor reel blades and original equipment premium series reels. Bedknives are surface ground on the top and front edge and specially packaged for rust prevention. All R&R Bedknives now have an increased front edge grind for added life. All R&R Bedknives are guaranteed against defects in material and workmanship under normal use for the life of the part. You can expect up to double the life over standard bedknives.:

3	<b>R115-1880</b>	115-1880	Bedknife - Razor Tool Steel - 21 Micro Cut .062 - .187 HOC	1
---	------------------	----------	---	---

*Detail Description:* R&R Razor bedknives are manufactured from premium alloy tool steel steel and then hardened to RC48-51 to match the temper of our Razor reel blades and original equipment premium series reels. Bedknives are surface ground on the top and front edge and specially packaged for rust prevention. All R&R Bedknives now have an increased front edge grind for added life. All R&R Bedknives are guaranteed against defects in material and workmanship under normal use for the life of the part. You can expect up to double the life over standard bedknives.:

3	<b>R150492</b>	150492	Bedknife - Razor Tool Steel - 21 Micro Cut Ext	1
---	----------------	--------	---	---

*Detail Description:* R&R Razor bedknives are manufactured from premium alloy tool steel steel and then hardened to RC48-51 to match the temper of our Razor reel blades and original equipment premium series reels. Bedknives are surface ground on the top and front edge and specially packaged for rust prevention. All R&R Bedknives now have an increased front edge grind for added life. All R&R Bedknives are guaranteed against defects in material and workmanship under normal use for the life of the part. You can expect up to double the life over standard bedknives.:

3	<b>R112-7475</b>	112-7475	Bedknife - Razor Tool Steel - 22 x 3/8 Fairway	1
---	------------------	----------	---	---

All original equipment manufacturers names and part numbers are used for identification purposes only, and we are in no way implying that our products are original equipment parts. Prices subject to change without notice.



# Replaces Toro Greensmaster eTriFlex 3360 Parts

DPA Cutting Unit - Models 04651, 04653 & 04655  
Reel & Bedknife



Item No	R&R Part No.	OEM Part No.	Description	Qty Req	Order Quantity
---------	--------------	--------------	-------------	---------	----------------

*Detail Description: R&R Razor bedknives are manufactured from premium alloy tool steel steel and then hardened to RC48-51 to match the temper of our Razor reel blades and original equipment premium series reels. Bedknives are surface ground on the top and front edge and specially packaged for rust prevention. All R&R Bedknives now have an increased front edge grind for added life. All R&R Bedknives are guaranteed against defects in material and workmanship under normal use for the life of the part. You can expect up to double the life over standard bedknives.:*

## Overhaul Kit

4	<b>R121-2637</b>	121-2637	Overhaul Kit - DPA Adjusters	1	
---	------------------	----------	------------------------------	---	--

## Service Tools

5	<b>R51-0880</b>	51-0880	Bedknife Screw Driver Tool	0	
---	-----------------	---------	----------------------------	---	--

*Detail Description: Easily install and remove bed knife screws with the help of a ratchet with 3/8" drive. Tool manufactured with hardened alloy steel.:*

## Other Parts Available

10	<b>R106-2648-01</b>	106-2648-01	Bed Bar	1	
10	<b>R99-3794-01</b>	99-3794-01, 99-3794-03	Bed Bar - Aggressive	1	
11	<b>R106-2619</b>	106-2619	Seal - Strip	1	
12	<b>R106-5363</b>	106-5363	Shaft - Adjusting - Bed Bar - Stainless	2	
13	<b>R106-5344</b>	106-5344	Bushing - Flanged and Keyed	4	
14	<b>R99-2097</b>	99-2097	Detent - Bed Bar Adjuster	2	
15	<b>R105-5708</b>	105-5708, 121-4609	Plug - Expansion	1	
16	<b>R119-4151</b>	119-4151	Screw - Bedknife 5/16-18 x 17/32	13	
17	<b>R52-2900</b>	52-2900	Washer - Nylon	4	
18	<b>R52-2890</b>	52-2890	Bushing - Flanged	2	

All original equipment manufacturers names and part numbers are used for identification purposes only, and we are in no way implying that our products are original equipment parts. Prices subject to change without notice.





# Replaces Toro Greensmaster eTriFlex 3360 Parts

DPA Cutting Unit - Models 04651, 04653 & 04655  
Reel & Bedknife



Item No	R&R Part No.	OEM Part No.	Description	Qty Req	Order Quantity
19	<b>R32120-93</b>	32120-93	Snap Ring - HD	2	
20	<b>R110-7352</b>	110-7352	Screw - HOC 2 5/8 Stainless	2	
21	<b>R52-2860</b>	119-4150, 52-2860	Washer - Bed Bar Pivot	4	
22	<b>R117-9493</b>	117-9493	Bolt - Bed Bar - Hardened	2	
23	<b>R119-4155</b>	119-4155	Washer - Hardened	2	
24	<b>R115-7039</b>	115-7039	Screw - Adjuster - Bedbar	2	
<i>Tech Note: Ser# 316000001-999999999:</i>					
24	<b>R137-6130</b>	137-6130	Screw - Adjuster - Hardened - Bedbar	2	
<i>Tech Note: Ser# 405700000-999999999:</i>					
25	<b>R3296-48</b>	119-4039, 32146-7, 3296-34, 3296-48	Locknut - 7/16-14 ESNA	2	
26	<b>R114-9396</b>	114-9396, 119-4067	Bolt - Hex HD 5/16-18 x 3/8	4	
27	<b>R115-7041</b>	115-7041	Bracket - Front Roller 5 1/4 in	2	
28	<b>R115-7263</b>	115-7263	Bolt - Bearing Lock	1	
29	<b>R115-3296</b>	115-3296	Bearing	2	
<i>Tech Note: Ser# 316000001-999999999:</i>					
29	<b>R140-5510</b>	140-5510	Bearing - Sealed Stainless	2	
<i>Tech Note: Ser# 408000000-999999999:</i>					
30	<b>R110-2343</b>	110-2343	Groomer Blade - Carbide Tipped - Helix 1.5mm	42	

All original equipment manufacturers names and part numbers are used for identification purposes only, and we are in no way implying that our products are original equipment parts. Prices subject to change without notice.



# Replaces Toro Greensmaster eTriFlex 3360 Parts

DPA Cutting Unit - Models 04651, 04653 & 04655  
Reel & Bedknife



Item No	R&R Part No.	OEM Part No.	Description	Qty Req	Order Quantity
31	<b>R70-1350</b>	70-1350	Spacer - 1/4 Fits Groomer Shaft	82	
32	<b>R115-3303-03</b>	115-3303-03	Bar - Cutoff	1	
33	<b>R3296-28</b>	119-4154, 140-9234, 32127-34, 32128-7, 32128-8, 32136-7, 3296-28	Nut - 1/2-20 ESNA Jam	2	
34	<b>R119-4153</b>	119-4153	Bushing - Rubber	2	
35	<b>R119-4164</b>	119-4164	Washer - Wave	2	
36	<b>R119-4156</b>	119-4156	Spring - Compression	2	
37	<b>R105-5700</b>	105-5700, 115-5258	Wave Washer - Bearing	1	
38	<b>R115-3299</b>	115-3299	Seal- Flocked	2	
39	<b>R119-4095</b>	119-4095	Grass Shield Assy	1	
40	<b>R354083</b>	104-7729, 354083	Decal - Danger	1	
<i>Tech Note: Ser# 316000001-999999999:</i>					
40	<b>R137-9706</b>	137-9706	Decal- Warning	1	
<i>Tech Note: Ser# 403460001-999999999:</i>					
41	<b>R119-4035</b>	119-4035	Bolt - 1/4-20 x 1 3/4 Soc HD Cap Scr	4	
42	<b>R119-4040</b>	119-4040	Nut - 1/4-20 Fl Locknut	4	
43	<b>R105-5712</b>	105-5712, 119-4157	Retainer - Roller	2	

All original equipment manufacturers names and part numbers are used for identification purposes only, and we are in no way implying that our products are original equipment parts. Prices subject to change without notice.



# Replaces Toro Greensmaster eTriFlex 3360 Parts

DPA Cutting Unit - Models 04651, 04653 & 04655  
Reel & Bedknife



Item No	R&R Part No.	OEM Part No.	Description	Qty Req	Order Quantity
44	R105-5711	105-5711, 119-4165	Shim - Roller	2	
45	R105-5710	105-5710, 119-4166	Spacer - Roller	2	
46	R106-9095-01	106-9095-01	Scraper - Assy	1	
47	R256-239	256-239	Bearing	2	
48	R106-9091	106-9091	Pin - Scraper	2	
49	R33113-016	33113-016, 48-7620	Bolt - Hex Washer M6-1.0 x 12	4	
50	R6050-103	48-8010, 48-8030	Washer - Flat	4	
51	R33023-00	33023-00, 48-7900, 49-7810	Locknut - ESNA 6mm x 1.0	4	
52	R33094-00	33094-00, 93-5914	Washer - Flat - 8mm Hardened	2	
53	R33024-00	33024-00	Locknut - 8mm x 1.25	2	
54	R115-7042	115-7042	Bolt-Shoulder, Flange	4	
55	R131-6150	131-6150	Screw- 1/4-20 x 3/4 Hx Wh Thread Forming	4	
56	R119-4012	119-4012	Screw - Hx Washer HD Self Threading	3	
57	R106-9094	106-9094	Spring - LH - SS	1	
58	R106-9093	106-9093	Spring - RH - SS	1	
59	R104-2603	104-2603, 119-4158	Washer - HOC Bracket	2	
60	R119-9303	105-5799, 119-9303	Frame - Crossmember	1	

All original equipment manufacturers names and part numbers are used for identification purposes only, and we are in no way implying that our products are original equipment parts. Prices subject to change without notice.



# Replaces Toro Greensmaster eTriFlex 3360 Parts

*DPA Cutting Unit - Models 04651, 04653 & 04655  
Reel & Bedknife*



Item No	R&R Part No.	OEM Part No.	Description	Qty Req	Order Quantity
61	<b>R119-9307-01</b>	119-9307-01	Arm - Pitch	2	
62	<b>R120-3221</b>	120-3221	Reel Nut Assy - LH	1	
63	<b>R120-3220</b>	120-3220	Plug - Plastic	1	
64	<b>R117-6706</b>	117-6706	Clamp - Motor	1	
65	<b>R119-4005</b>	119-4005	Side Plate Assy-LH Incl R117-6619	1	
66	<b>R119-4007</b>	119-4007	Side Plate Assy-RH Incl R117-6619	1	
67	<b>R117-6619</b>	117-6619	Bushing	2	
68	<b>R99-3773</b>	99-3773	Bolt- Plow 3/8-16 x 1 3/4	2	
69	<b>R132-4586</b>	132-4586	Screw - HOC - Stainless	2	
70	<b>R121-4605</b>	121-4605	Washer - Spring - Curved	2	

All original equipment manufacturers names and part numbers are used for identification purposes only, and we are in no way implying that our products are original equipment parts. Prices subject to change without notice.



# Replaces Toro Greensmaster eTriFlex 3360 Parts

DPA Cutting Unit - Models 04651, 04653 & 04655  
Reel & Bedknife



Item No	R&R Part No.	OEM Part No.	Description	Qty Req	Order Quantity
71	R453011	01-166-0100, 01-166-0120, 01-166-0270, 01-166-0500, 01-166-0600, 01-166-0620, 132-4593, 2356-3, 237-12, 24-10-AD, 24-11-AD, 24-11-BD, 24-12-AD, 24-12-BD, 30-9310, 32-8190, 3256-24, 3256-3, 3256-36, 3256-4, 453011, 47-9950, 48-9220, 513458, 7-0052	Washer - Flat 3/8 SAE Y/Zinc	4	
72	R1891	1891	E-Ring	2	
73	R115-5227	115-5227	Motor Adapter Assy	1	
74	R115-3294	115-3294	Adaptor - Hyd Motor	1	
75	R434036	3274-18	Screw - Soc HD 5/16-18 x 1-1/4	2	
76	R3296-29	1-804256, 3290-357, 3296-29, 915662P	Locknut - 5/16-18 ESNA	4	

All original equipment manufacturers names and part numbers are used for identification purposes only, and we are in no way implying that our products are original equipment parts. Prices subject to change without notice.





# Replaces Toro Greensmaster eTriFlex 3360 Parts

DPA Cutting Unit - Models 04651, 04653 & 04655  
Reel & Bedknife



Item No	R&R Part No.	OEM Part No.	Description	Qty Req	Order Quantity
76	R32153-3	119-4038, 22-12-AJFD, 32127-35, 32146-5, 32153-3, 3296-18, 3296-29, 3296-31, N/A	Locknut - 5/16-18 ESNA Zinc	4	
77	R115-7193	115-7193	Nut-HOC	2	
<i>Tech Note: Ser# 316000001- 403460000:</i>					
77	R32128-19	104-8301, 104-9301, 32128-19	Locknut - 3/8-16 Flanged Top Lock	2	
<i>Tech Note: Ser# 403460001-:</i>					
77	R104-8301	104-8301, 104-9301, 109-6658, 133-7570	Locknut - 3/8-16 Nylon Flanged	2	
<i>Tech Note: Ser# 403460001-:</i>					
78	R360-0398	360-0398	O-Ring	1	
79	R237-22	107-8844, 237-22, 237-78	O-Ring	2	

All original equipment manufacturers names and part numbers are used for identification purposes only, and we are in no way implying that our products are original equipment parts. Prices subject to change without notice.