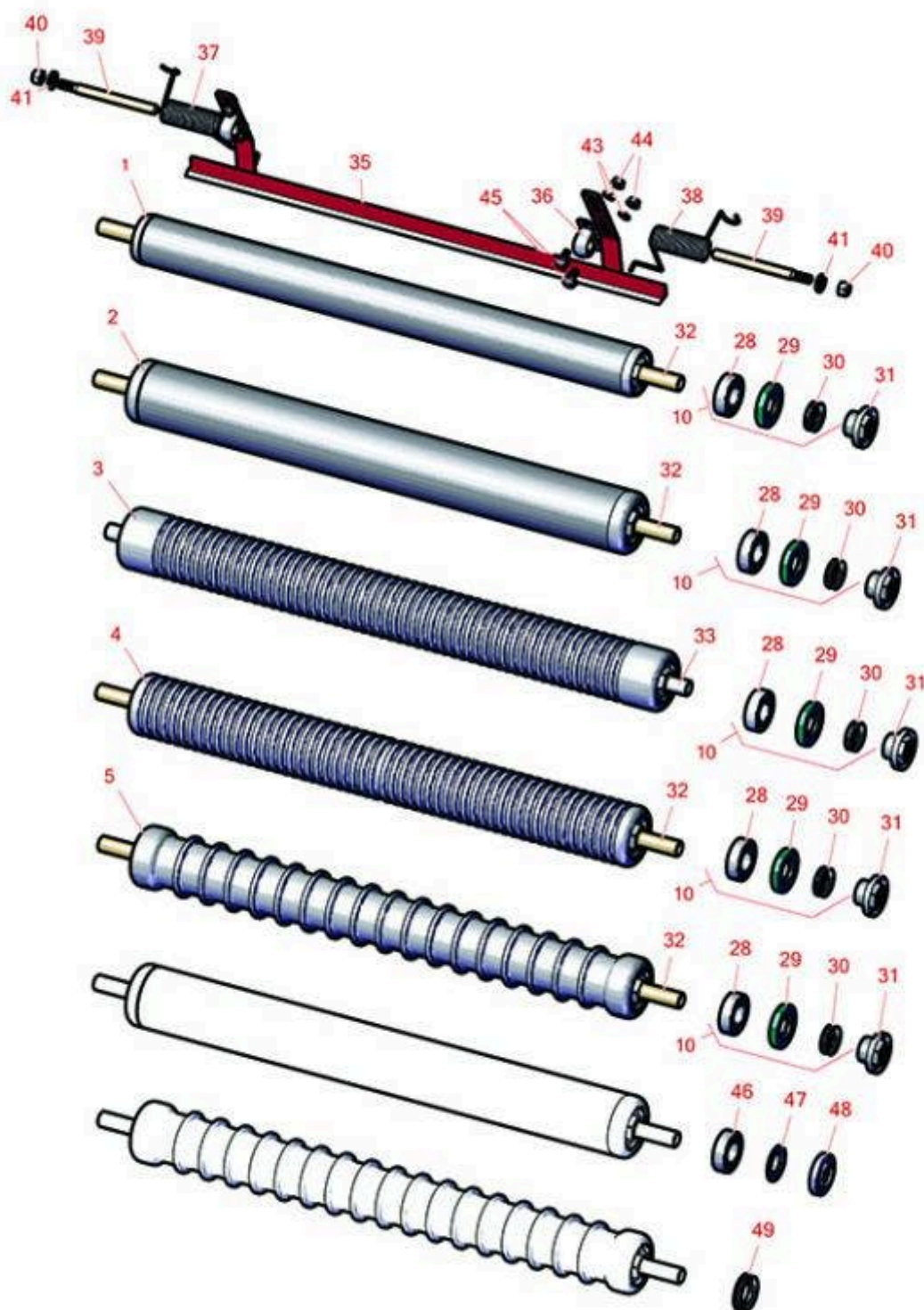




Replaces Toro Greensmaster TriFlex 3420 Parts

DPA Cutting Unit - Models 04613, 04614 & 04615
Rollers



All original equipment manufacturers names and part numbers are used for identification purposes only, and we are in no way implying that our products are original equipment parts. Prices subject to change without notice.



Replaces Toro Greensmaster TriFlex 3420 Parts

DPA Cutting Unit - Models 04613, 04614 & 04615
Rollers



Item No	R&R Part No.	OEM Part No.	Description	Qty Req	Order Quantity
---------	--------------	--------------	-------------	---------	----------------

Rollers

1	R140-5560	105-5776, 106-6945, 107-3509, 119-4093, 120-9595, 140-5560	Roller - Smooth 2 in Steel Rear	1	
---	-----------	---	---------------------------------	---	--

2	R115-7388	115-7388, 140-5681	Roller - Smooth Tubular Steel 2-1/2 in Dia	1	
---	-----------	-----------------------	---	---	--

Detail Description: Constructed with a through shaft, this steel roller uses a through shaft and ball bearings.:

3	R121-4675	121-4675	Roller - Extended Machined Grooved	1	
---	-----------	----------	---------------------------------------	---	--

4	R115-7360	115-7360	Roller - Narrow Grooved Machined Aluminum - 2 1/2	1	
---	-----------	----------	--	---	--

Detail Description: Constructed with a through shaft, this aluminum roller is machined with narrow grooves and uses ball bearings.:

5	R115-7386	115-7386	Roller - Wide Grooved Machined Aluminum - 2-1/2 Dia	1	
---	-----------	----------	---	---	--

Detail Description: Constructed with a through shaft, this aluminum roller is machined with 1-1/8" wide grooves for the least amount of ground contact and uses ball bearings.:

5	R99-6216	99-6216	Tube - Grooved - 1 1/8 Spacing	1	
---	----------	---------	--------------------------------	---	--

Overhaul Kits and Service Tools

10	R107-1594	107-1594	Overhaul Kit - Roller	0	
----	-----------	----------	-----------------------	---	--

Detail Description: Includes 2 ea.: R106-6941 Seals, R106-6942 V-Rings & R251-347 Bearings:

Other Parts Available

28	R251-347	251-347, 72-5690	Bearing - Ball	2	
----	----------	---------------------	----------------	---	--

All original equipment manufacturers names and part numbers are used for identification purposes only, and we are in no way implying that our products are original equipment parts. Prices subject to change without notice.



Replaces Toro Greensmaster TriFlex 3420 Parts

DPA Cutting Unit - Models 04613, 04614 & 04615
Rollers



Item No	R&R Part No.	OEM Part No.	Description	Qty Req	Order Quantity
29	R106-6941	106-6941	Seal - Double Lip	2	
30	R106-6942	106-6942	V-Ring - Roller	2	
31	R114-3745	106-6939, 108-3151, 114-3745, 114-5411	Locknut - Bearing - Stainless	2	
32	R119-4090	119-4090	Shaft - Roller - Hardened	1	
33	R120-5404	120-5404	Shaft- Roller	1	
35	R106-9095-01	106-9095-01	Scraper - Assy	1	
36	R256-239	256-239	Bearing	2	
37	R106-9093	106-9093	Spring - RH - SS	1	
38	R106-9094	106-9094	Spring - LH - SS	1	
39	R106-9091	106-9091	Pin - Scraper	2	
40	R33024-00	33024-00	Locknut - 8mm x 1.25	2	
40	R443102	01-188-0420, 22-11-AJD, 3217-5, 33024-00	Nut - 1/4-20 Yellow Zinc	2	
41	R33094-00	33094-00, 93-5914	Washer - Flat - 8mm Hardened	2	
41	R453023	3256-1, 3256-22, 3256-72, 33094-00	Washer - Flat 1/4	2	
41	R3256-22	24-9-BD, 3-1032, 3256-1, 3256-22, 93-0954, 93-0989	Washer - Flat 1/4 Yellow	2	

All original equipment manufacturers names and part numbers are used for identification purposes only, and we are in no way implying that our products are original equipment parts. Prices subject to change without notice.



Replaces Toro Greensmaster TriFlex 3420 Parts

DPA Cutting Unit - Models 04613, 04614 & 04615
Rollers



Item No	R&R Part No.	OEM Part No.	Description	Qty Req	Order Quantity
41	R3253-3	01-166-0070, 01-166-0410, 23-9-GD, 24-7150, 3253-3, 3256-1, 352-167	Washer - Lock 1/4	2	
43	R24M7139	24M7139, 3256-16, 33093-00, 43-5930	Washer - Flat 6mm	4	
44	R33003-00	33003-00, 65-7980	Hex Nut - Flanged 6-1.0mm	4	
44	R33023-00	33023-00, 48-7900, 49-7810	Locknut - ESNA 6mm x 1.0	4	
45	R33113-016	33113-016, 48-7620	Bolt - Hex Washer M6-1.0 x 12	4	
46	R117-6831	117-6831	Bearing - Stainless	4	
47	R115-5604	115-5604	Washer - Flocked Seal	4	
48	R117-9080	117-9080	Locknut - Stainless with Nyloc	2	
49	R107-3238	107-3238	V-Ring - Reel	2	

All original equipment manufacturers names and part numbers are used for identification purposes only, and we are in no way implying that our products are original equipment parts. Prices subject to change without notice.