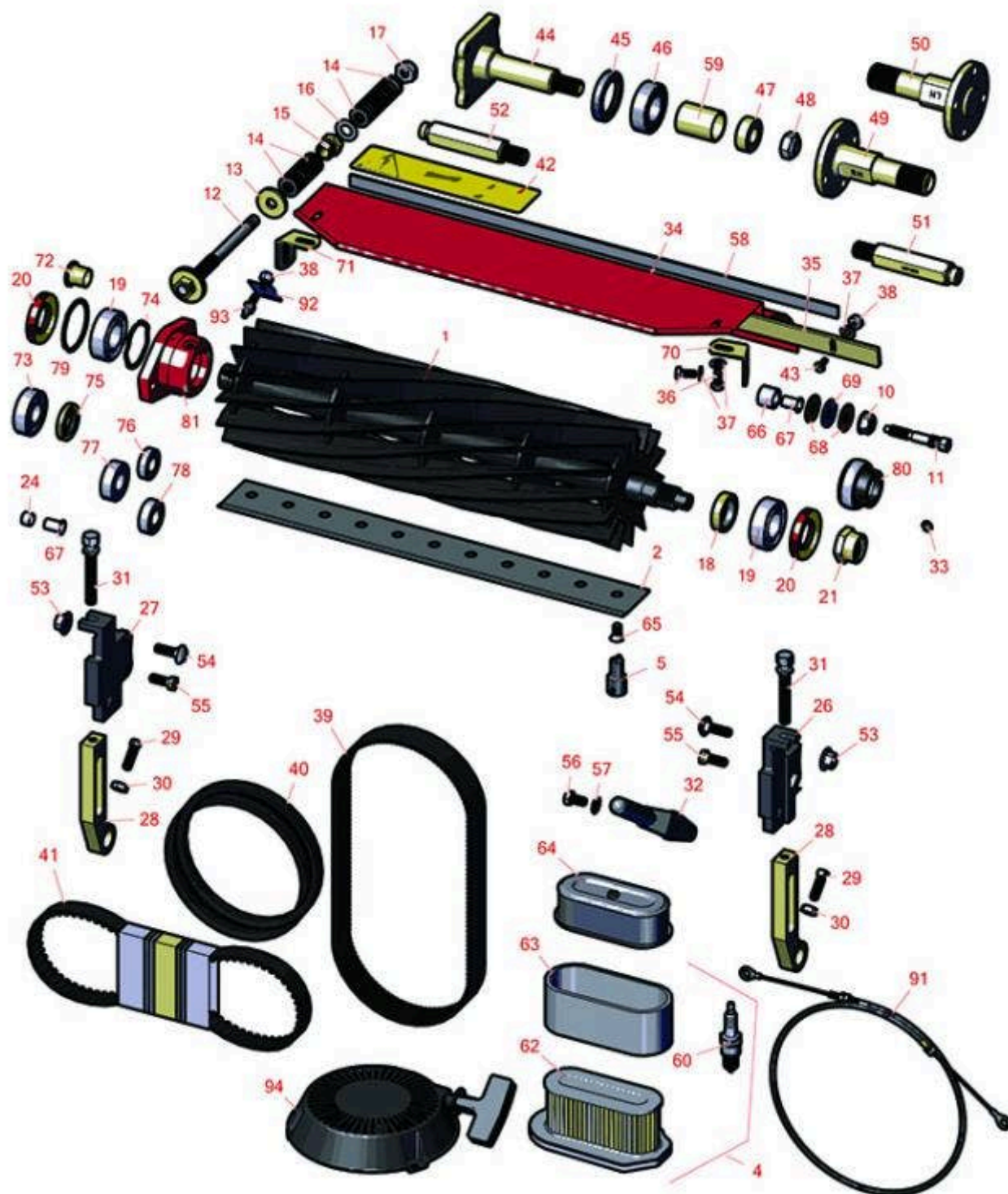




# Replaces Toro Greensmaster 800 Parts

Mower - Model 04048

Reel & Bedknife



All original equipment manufacturers names and part numbers are used for identification purposes only, and we are in no way implying that our products are original equipment parts. Prices subject to change without notice.



# Replaces Toro Greensmaster 800 Parts

Mower - Model 04048

Reel & Bedknife



Item No	R&R Part No.	OEM Part No.	Description	Qty Req	Order Quantity
---------	--------------	--------------	-------------	---------	----------------

## R&R Reels, Lifetime Guaranteed

1	<b>R98-5919</b>	98-5919	Reel - 11 Blade	1
---	-----------------	---------	-----------------	---

*Detail Description: R&R Reel blades are expertly crafted from premium high carbon-boron alloy steel, heat-treated to perfectly complement both R&R and OEM bedknives. Each reel undergoes precision cylindrical grinding on bearing surfaces, followed by relief grinding for optimal performance. Advanced computer balancing ensures extended reel and bearing life. Backed by our lifetime guarantee against defects in materials and craftsmanship under normal use, R&R Reels deliver unmatched durability and cutting precision you can trust.:*

1	<b>R150750</b>	120-2729	Reel - 14 Blade	1
---	----------------	----------	-----------------	---

*Detail Description: R&R Reel blades are expertly crafted from premium high carbon-boron alloy steel, heat-treated to perfectly complement both R&R and OEM bedknives. Each reel undergoes precision cylindrical grinding on bearing surfaces, followed by relief grinding for optimal performance. Advanced computer balancing ensures extended reel and bearing life. Backed by our lifetime guarantee against defects in materials and craftsmanship under normal use, R&R Reels deliver unmatched durability and cutting precision you can trust.:*

1	<b>R127-2160</b>	127-2160	Reel - 11 Blade	1
---	------------------	----------	-----------------	---

*Detail Description: R&R Reel blades are manufactured from high carbon-boron alloy steel and then hardened to RC46-49 to match the temper of our bedknives and original equipment bedknives. All R&R Reels are cylindrically ground on bearing surfaces and then relief ground. Reels are then precision computer balanced for extended bearing and reel life. R&R Products Reels are guaranteed against defects in material and workmanship for the life of the reel under normal use.:*

## R&R Bedknives, Lifetime Guaranteed

2	<b>R98-7260</b>	98-7260, 98-7260-05	Bedknife - Tournament .125 - .500 HOC	1
---	-----------------	------------------------	--	---

*Detail Description: R&R Bedknives are manufactured from high carbon-boron alloy steel and then hardened to RC46-49 to match the temper of our reel blades and original equipment reels. Bedknives are surface ground on the top and front edge and straightened three times before being packaged with oil for rust prevention. All R&R Bedknives now have an increased front edge grind for added life. All R&R Bedknives are guaranteed against defects in material and workmanship under normal use for the life of the part.:*

2	<b>R98-7261</b>	98-7261	Bedknife - Micro Cut .062 - .187 HOC	1
---	-----------------	---------	---	---

All original equipment manufacturers names and part numbers are used for identification purposes only, and we are in no way implying that our products are original equipment parts. Prices subject to change without notice.



# Replaces Toro Greensmaster 800 Parts

Mower - Model 04048

Reel & Bedknife



Item No	R&R Part No.	OEM Part No.	Description	Qty Req	Order Quantity
---------	--------------	--------------	-------------	---------	----------------

*Detail Description: R&R Bedknives are manufactured from high carbon-boron alloy steel and then hardened to RC46-49 to match the temper of our reel blades and original equipment reels. Bedknives are surface ground on the top and front edge and straightened three times before being packaged with oil for rust prevention. All R&R Bedknives now have an increased front edge grind for added life. All R&R Bedknives are guaranteed against defects in material and workmanship under normal use for the life of the part.:*

2	<b>R110-2300</b>	110-2300	Bedknife - Micro Cut Extended .062 - .187 HOC	1	
---	------------------	----------	--	---	--

*Detail Description: R&R Bedknives are manufactured from high carbon-boron alloy steel and then hardened to RC46-49 to match the temper of our reel blades and original equipment reels. Bedknives are surface ground on the top and front edge and straightened three times before being packaged with oil for rust prevention. All R&R Bedknives now have an increased front edge grind for added life. All R&R Bedknives are guaranteed against defects in material and workmanship under normal use for the life of the part.:*

2	<b>R110-2301</b>	110-2301	Bedknife - Low Cut .187 - 1.00 HOC	1	
---	------------------	----------	---------------------------------------	---	--

*Detail Description: R&R Bedknives are manufactured from high carbon-boron alloy steel and then hardened to RC46-49 to match the temper of our reel blades and original equipment reels. Bedknives are surface ground on the top and front edge and straightened three times before being packaged with oil for rust prevention. All R&R Bedknives now have an increased front edge grind for added life. All R&R Bedknives are guaranteed against defects in material and workmanship under normal use for the life of the part.:*

## R&R Razor Tool Steel Bedknives

2	<b>R117-1530</b>	117-1530	Bedknife - Razor Tool Steel - 18 Micro Cut .062 - .187 HOC	1	
---	------------------	----------	---	---	--

*Detail Description: R&R Razor bedknives are manufactured from premium alloy tool steel steel and then hardened to RC48-51 to match the temper of our Razor reel blades and original equipment premium series reels. Bedknives are surface ground on the top and front edge and specially packaged for rust prevention. All R&R Bedknives now have an increased front edge grind for added life. All R&R Bedknives are guaranteed against defects in material and workmanship under normal use for the life of the part. You can expect up to double the life over standard bedknives.:*

2	<b>R117-1532</b>	117-1532	Bedknife - Razor Tool Steel - Tournament .125 - .500 HOC	1	
---	------------------	----------	---	---	--

All original equipment manufacturers names and part numbers are used for identification purposes only, and we are in no way implying that our products are original equipment parts. Prices subject to change without notice.



# Replaces Toro Greensmaster 800 Parts

Mower - Model 04048

Reel & Bedknife



Item No	R&R Part No.	OEM Part No.	Description	Qty Req	Order Quantity
---------	--------------	--------------	-------------	---------	----------------

*Detail Description: R&R Razor bedknives are manufactured from premium alloy tool steel steel and then hardened to RC48-51 to match the temper of our Razor reel blades and original equipment premium series reels. Bedknives are surface ground on the top and front edge and specially packaged for rust prevention. All R&R Bedknives now have an increased front edge grind for added life. All R&R Bedknives are guaranteed against defects in material and workmanship under normal use for the life of the part. You can expect up to double the life over standard bedknives.:*

## Overhaul Kits & Service Tools

4	<b>R30067</b>	30067	Filter Kit - 400 Hour Maintenance	1
---	---------------	-------	-----------------------------------	---

*Detail Description: Includes: 1 ea: RAK11013-2132 Air Filter, RAK11013-2133 Air Filter & RN7734 NGK Spark Plug:*

5	<b>R51-0880</b>	51-0880	Bedknife Screw Driver Tool	1
---	-----------------	---------	----------------------------	---

*Detail Description: Easily install and remove bed knife screws with the help of a ratchet with 3/8" drive. Tool manufactured with hardened alloy steel.:*

## Other Parts Available

10	<b>R32128-48</b>	32128-48	Locknut - 7/16-20 Flanged	2
11	<b>R65-6270</b>	119-4050, 65-6270	Bolt - Bed Bar	2
11	<b>R117-9493</b>	117-9493	Bolt - Bed Bar - Hardened	2
12	<b>R94-5873</b>	94-5873	Handle - Adjusting Bed Bar	2
13	<b>R94-5859</b>	94-5859	Washer - Hardened	2
14	<b>R93-9043</b>	93-9043	Washer - Spring Belleville	32
15	<b>R98-5913</b>	105-5379, 94-5855, 98-5913	Locknut - Special	2
16	<b>R94-5858</b>	94-5858	Washer - Flat 7/16 SAE	2

All original equipment manufacturers names and part numbers are used for identification purposes only, and we are in no way implying that our products are original equipment parts. Prices subject to change without notice.



## Replaces Toro Greensmaster 800 Parts

Mower - Model 04048

Reel & Bedknife



Item No	R&R Part No.	OEM Part No.	Description	Qty Req	Order Quantity
17	R3296-48	119-4039, 32146-7, 3296-34, 3296-48	Locknut - 7/16-14 ESNA	2	
17	R33025-00	32025-00, 33025-00	Locknut - 10mm x 1.5 Jam	2	
18	R253-96	253-96	Seal - Oil Single Lip Reel	2	
19	R251-342	251-342	Bearing - Reel	2	
20	R253-163	253-163	Seal - Reel	2	
21	R92-7302	65-8240, 86-7160, 92-7302	Locknut - Reel	1	
24	R65-7910	65-7910	Spacer - Latch	2	
26	R93-6049	93-6049	Bracket - HOC LH	1	
27	R93-6048	93-6048	Bracket - HOC RH	1	
28	R93-6090	93-6090	Arm - Roller HOC	2	
29	R3242-4	3242-4	Screw - Set Sq HD 5/16-18 x 1	2	
30	R443106	01-188-0518, 22-12-AJD, 32111-4, 3217-4, 3217-6, 3218-2, 513295, 513412, 915112P, 915978, 915979	Nut - 5/16-18 Y/Zinc Plated	2	
31	R93-6051	93-6051	Bolt - HOC	2	
32	R65-8570	65-7250, 65-8570	Rod - Mounting Grass Basket	2	

All original equipment manufacturers names and part numbers are used for identification purposes only, and we are in no way implying that our products are original equipment parts. Prices subject to change without notice.



# Replaces Toro Greensmaster 800 Parts

Mower - Model 04048

Reel & Bedknife



Item No	R&R Part No.	OEM Part No.	Description	Qty Req	Order Quantity
33	R302-5	21-6010, 302-11, 302-37, 302-47, 302-5, 302-57, 302-58, 302-6, 31-0300, 32-9660, 60-0800, 62-3880, 92-4181	Fitting - Grease	2	
34	R98-5918	98-5918, 98-5944-01	Shield - Grass	1	
35	R98-5933	98-5933	Bar - Cut Off Grass Shield	1	
36	R400106	321-3, 513315, 908002P	Bolt - Hex HD 1/4-20 x 5/8	4	
37	R3256-22	24-9-BD, 3-1032, 3256-1, 3256-22, 93-0954, 93-0989	Washer - Flat 1/4 Yellow	6	
38	R301504	2296-42, 301504, 32127-24, 32128-33, 32146-17, 3296-16, 3296-42, 3296-42 , 915661P	Locknut - ESNA 1/4-20	5	
39	R65-9080	65-9080	Belt - Countershaft	1	
39	R150525	65-6200	Belt - Reel Drive	1	
40	R92-9218	92-9218	Belt - Engine Set of 2	1	

All original equipment manufacturers names and part numbers are used for identification purposes only, and we are in no way implying that our products are original equipment parts. Prices subject to change without notice.



## Replaces Toro Greensmaster 800 Parts

Mower - Model 04048

Reel & Bedknife



Item No	R&R Part No.	OEM Part No.	Description	Qty Req	Order Quantity
41	R150527	65-6210	Belt - Drum Drive	2	
42	R93-8064	93-8064	Decal - Warning	1	
43	R32144-73	104-2065, 32144-73	Screw - Machine Hex Washer Head	5	
44	R94-5850	94-5850	Spindle - Rear Roller Drum	1	
45	R253-159	253-159	Seal - Drum	2	
46	RA203605	251-82, 6610	Bearing	2	
47	R65-6530	65-6530	Spacer - Seal	1	
48	R3296-33	3296-33	Locknut - 5/8-18 ESNA Jam	1	
49	R88-7510	88-7510	Shaft - Extension RH Drum	1	
50	R88-7520	88-7520	Shaft - Extension LH Drum	1	
51	R88-7580	88-7580	Shaft - Transport Wheel LH	1	
52	R88-7590	88-7590	Shaft - Transport Wheel RH	1	
53	R32128-21	32128-21	Locknut - Flanged 3/8-16 Whiz Top Lock	2	
54	R3231-5	3231-5	Bolt - Carriage 3/8-16 x 1-3/4	2	
55	R92-8914	3231-5, 65-8530, 92-8914	Bolt - Tapered Face 5/16-18 x 7/8	4	
56	R322-2	322-2, 513338P	Bolt - Hex HD 5/16-18 x 5/8	4	
57	R3255-8	3255-8	Washer - Lock 5/16 Ext	4	
58	R106-2619	106-2619	Seal - Strip	1	
59	R65-6520	65-6520	Spacer	1	

All original equipment manufacturers names and part numbers are used for identification purposes only, and we are in no way implying that our products are original equipment parts. Prices subject to change without notice.



## Replaces Toro Greensmaster 800 Parts

Mower - Model 04048

Reel & Bedknife



Item No	R&R Part No.	OEM Part No.	Description	Qty Req	Order Quantity
60	<b>RN7131</b>	108-2557	NGK Spark Plug - BPR6ES	1	
60	<b>RN7734</b>	108-2557, 93-8584	NGK Spark Plug - BPR5ES	1	
62	<b>RAK11013-2132</b>	93-8636	Kawasaki Element-Air Filter	1	
62	<b>RRF10182</b>	93-8636	SilverGuard Air Filter	1	
63	<b>RAK11013-2133</b>	93-8637	Kawasaki Pre Cleaner Foam - Air Filter	1	
63	<b>RRF10410</b>	93-8637	SilverGuard Foam Filter	1	
64	<b>RRF10204</b>	121-0618	SilverGuard Air Filter - Inner	1	
65	<b>R150476</b>	3-3816, 3-6462, 57-4910	Screw - Bedknife 5/16-18 x 5/8	11	
65	<b>R150477</b>	57-4910	Screw - Bedknife 5/16-18 x 1/2	11	
66	<b>R63-9510</b>	63-9480, 63-9510	Bushing - Rubber For Bed Bar	2	
67	<b>R52-2890</b>	52-2890	Bushing - Flanged	4	
68	<b>R52-2860</b>	119-4150, 52-2860	Washer - Bed Bar Pivot	4	
69	<b>R52-2900</b>	52-2900	Washer - Nylon	4	
70	<b>R65-6450</b>	65-6450	Bracket - LH	1	
71	<b>R65-6460</b>	65-6460	Bracket - RH	1	
72	<b>R65-8770</b>	65-8770	Bushing	2	
73	<b>R251-318</b>	251-11, 251-204, 251-318, 251-38, 251-89	Bearing - Ball	1	

All original equipment manufacturers names and part numbers are used for identification purposes only, and we are in no way implying that our products are original equipment parts. Prices subject to change without notice.



## Replaces Toro Greensmaster 800 Parts

Mower - Model 04048

Reel & Bedknife



Item No	R&R Part No.	OEM Part No.	Description	Qty Req	Order Quantity
74	<b>R3290-485</b>	3290-485	Washer - Wave	1	
75	<b>R364170</b>	253-118, 62-3400	Seal	1	
76	<b>R251-336</b>	251-336	Bearing	2	
77	<b>R38-7820</b>	100-1048, 251-277, 251-5, 38-7820	Bearing - Ball	4	
78	<b>R251-338</b>	251-338	Bearing - Ball	3	
79	<b>R32151-92</b>	32151-92	Retaining Ring	1	
80	<b>R71-1360</b>	251-219, 251-253, 251-254, 251-320, 71-1360, 88-7880, 94-3405	Bearing	2	
81	<b>R65-8640</b>	65-6090, 65-8640	Housing - Bearing	2	
91	<b>R94-5870</b>	94-5870	Cable - Clutch Assy	1	
92	<b>R65-6290</b>	65-6259, 65-6290	Spring-Detent	1	
93	<b>R93-9014</b>	65-7020, 92-7676, 93-9014	Pin-Clutch, Actuat	1	
94	<b>R93-8552</b>	93-8552	Recoil Starter Assy	1	

All original equipment manufacturers names and part numbers are used for identification purposes only, and we are in no way implying that our products are original equipment parts. Prices subject to change without notice.