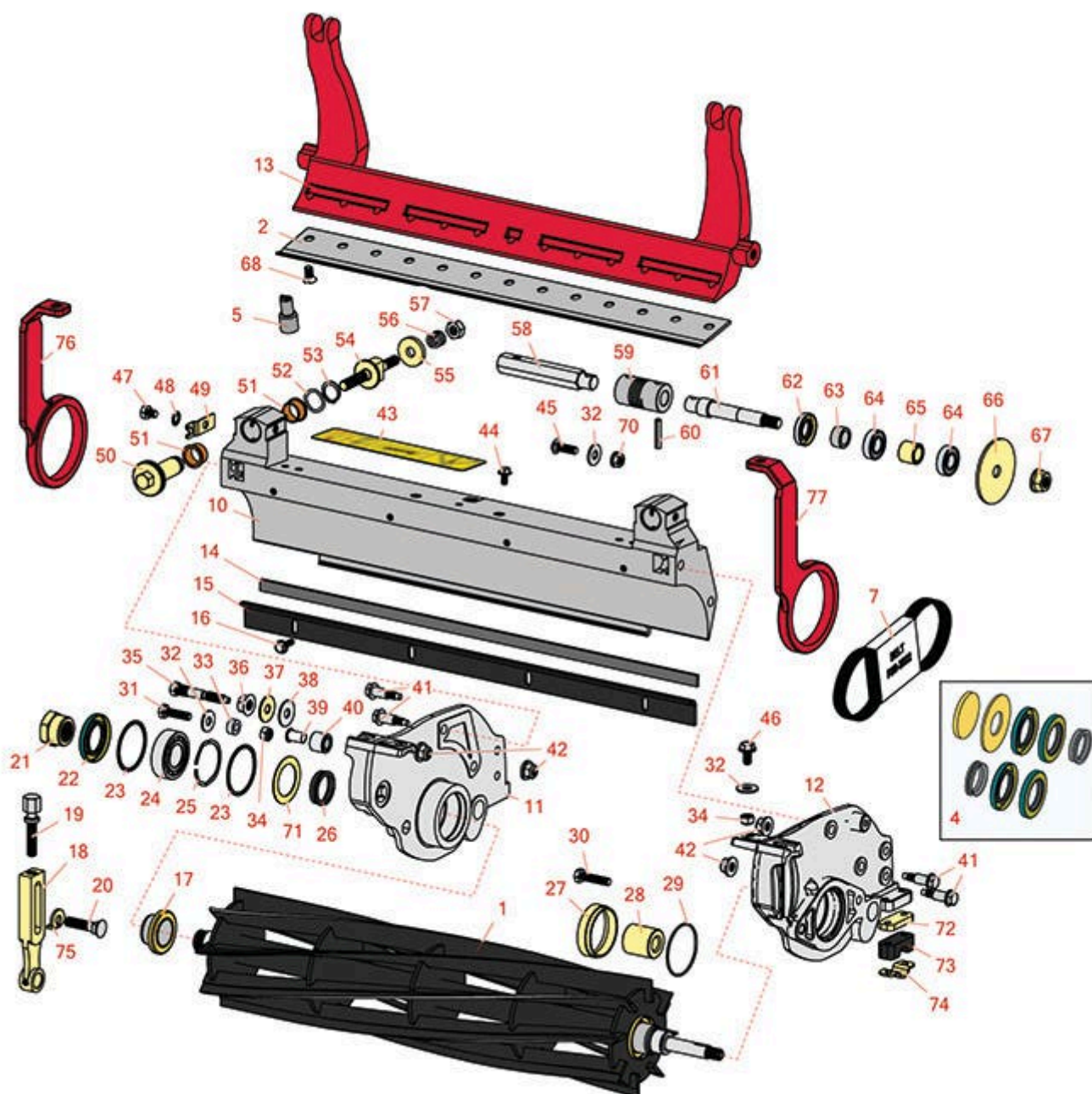




Replaces Toro Greensmaster Flex 21 Parts

DPA Cutting Unit - Model 04202 & 04208
Reel & Bedknife



All original equipment manufacturers names and part numbers are used for identification purposes only, and we are in no way implying that our products are original equipment parts. Prices subject to change without notice.



Replaces Toro Greensmaster Flex 21 Parts

DPA Cutting Unit - Model 04202 & 04208
Reel & Bedknife



Item No	R&R Part No.	OEM Part No.	Description	Qty Req	Order Quantity
---------	--------------	--------------	-------------	---------	----------------

R&R Reels, Lifetime Guaranteed

1	R107-7634	107-7634	Reel - 8 Blade	1	
---	------------------	----------	----------------	---	--

Detail Description: R&R Reel blades are manufactured from high carbon-boron alloy steel and then hardened to RC46-49 to match the temper of our bedknives and original equipment bedknives. All R&R Reels are cylindrically ground on bearing surfaces and then relief ground. Reels are then precision computer balanced for extended bearing and reel life. R&R Products Reels are guaranteed against defects in material and workmanship for the life of the reel under normal use.:

1	R107-7635	107-7635	Reel - 11 Blade	1	
---	------------------	----------	-----------------	---	--

Detail Description: R&R Reel blades are manufactured from high carbon-boron alloy steel and then hardened to RC46-49 to match the temper of our bedknives and original equipment bedknives. All R&R Reels are cylindrically ground on bearing surfaces and then relief ground. Reels are then precision computer balanced for extended bearing and reel life. R&R Products Reels are guaranteed against defects in material and workmanship for the life of the reel under normal use.:

1	R115-4289	115-4289	Reel - 14 Blade	1	
---	------------------	----------	-----------------	---	--

Detail Description: R&R Reel blades are manufactured from high carbon-boron alloy steel and then hardened to RC46-49 to match the temper of our bedknives and original equipment bedknives. All R&R Reels are cylindrically ground on bearing surfaces and then relief ground. Reels are then precision computer balanced for extended bearing and reel life. R&R Products Reels are guaranteed against defects in material and workmanship for the life of the reel under normal use.:

R&R Bedknives, Lifetime Guaranteed

2	R93-4264	57-4960, 63-8470, 93-4264	Bedknife - Low Cut .187 - 1.00 HOC	1	
---	-----------------	---------------------------------	---------------------------------------	---	--

Detail Description: R&R Bedknives are manufactured from high carbon-boron alloy steel and then hardened to RC46-49 to match the temper of our reel blades and original equipment reels. Bedknives are surface ground on the top and front edge and straightened three times before being packaged with oil for rust prevention. All R&R Bedknives now have an increased front edge grind for added life. All R&R Bedknives are guaranteed against defects in material and workmanship under normal use for the life of the part.:

2	R108-4302	108-4301, 108-4302	Bedknife - Tournament Cut Extended .125 - .500 HOC	1	
---	------------------	-----------------------	---	---	--

All original equipment manufacturers names and part numbers are used for identification purposes only, and we are in no way implying that our products are original equipment parts. Prices subject to change without notice.



Replaces Toro Greensmaster Flex 21 Parts

DPA Cutting Unit - Model 04202 & 04208
Reel & Bedknife



Item No	R&R Part No.	OEM Part No.	Description	Qty Req	Order Quantity
---------	--------------	--------------	-------------	---------	----------------

Detail Description: R&R Bedknives are manufactured from high carbon-boron alloy steel and then hardened to RC46-49 to match the temper of our reel blades and original equipment reels. Bedknives are surface ground on the top and front edge and straightened three times before being packaged with oil for rust prevention. All R&R Bedknives now have an increased front edge grind for added life. All R&R Bedknives are guaranteed against defects in material and workmanship under normal use for the life of the part.:

2	R93-4263	63-8560, 66-9320, 93-4263, 93-6039	Bedknife - Tournament Cut .125 - .500 HOC	1	
---	-----------------	---	--	---	--

Detail Description: R&R Bedknives are manufactured from high carbon-boron alloy steel and then hardened to RC46-49 to match the temper of our reel blades and original equipment reels. Bedknives are surface ground on the top and front edge and straightened three times before being packaged with oil for rust prevention. All R&R Bedknives now have an increased front edge grind for added life. All R&R Bedknives are guaranteed against defects in material and workmanship under normal use for the life of the part.:

2	R93-4262	65-8250, 93-4262, 93-4263	Bedknife - Micro Cut .062 - .187 HOC	1	
---	-----------------	---------------------------------	---	---	--

Detail Description: R&R Bedknives are manufactured from high carbon-boron alloy steel and then hardened to RC46-49 to match the temper of our reel blades and original equipment reels. Bedknives are surface ground on the top and front edge and straightened three times before being packaged with oil for rust prevention. All R&R Bedknives now have an increased front edge grind for added life. All R&R Bedknives are guaranteed against defects in material and workmanship under normal use for the life of the part.:

2	R108-4303	104-7720, 108-4303	Bedknife - Micro Cut Extended .062 - .187 HOC	1	
---	------------------	-----------------------	--	---	--

Detail Description: R&R Bedknives are manufactured from high carbon-boron alloy steel and then hardened to RC46-49 to match the temper of our reel blades and original equipment reels. Bedknives are surface ground on the top and front edge and straightened three times before being packaged with oil for rust prevention. All R&R Bedknives now have an increased front edge grind for added life. All R&R Bedknives are guaranteed against defects in material and workmanship under normal use for the life of the part.:

2	R94-6392	62-2500, 94-6392	Bedknife - High Cut .312 - 1.00 HOC	1	
---	-----------------	---------------------	--	---	--

All original equipment manufacturers names and part numbers are used for identification purposes only, and we are in no way implying that our products are original equipment parts. Prices subject to change without notice.



Replaces Toro Greensmaster Flex 21 Parts

DPA Cutting Unit - Model 04202 & 04208
Reel & Bedknife



Item No	R&R Part No.	OEM Part No.	Description	Qty Req	Order Quantity
---------	--------------	--------------	-------------	---------	----------------

Detail Description: R&R Bedknives are manufactured from high carbon-boron alloy steel and then hardened to RC46-49 to match the temper of our reel blades and original equipment reels. Bedknives are surface ground on the top and front edge and straightened three times before being packaged with oil for rust prevention. All R&R Bedknives now have an increased front edge grind for added life. All R&R Bedknives are guaranteed against defects in material and workmanship under normal use for the life of the part.:

2	R150466	63-8600, 64-6393, 94-6393	Bedknife - Super Thick .312 - 1.00 HOC	1	
---	----------------	---------------------------------	---	---	--

Detail Description: R&R Bedknives are manufactured from high carbon-boron alloy steel and then hardened to RC46-49 to match the temper of our reel blades and original equipment reels. Bedknives are surface ground on the top and front edge and straightened three times before being packaged with oil for rust prevention. All R&R Bedknives now have an increased front edge grind for added life. All R&R Bedknives are guaranteed against defects in material and workmanship under normal use for the life of the part.:

R&R Razor Tool Steel Bedknives, Lifetime Guaranteed

2	R115-1881	115-1881	Bedknife - Razor Tool Steel - 21 Tournament Cut .125 - .500 HOC	1	
---	------------------	----------	---	---	--

Detail Description: R&R Razor bedknives are manufactured from premium alloy tool steel steel and then hardened to RC48-51 to match the temper of our Razor reel blades and original equipment premium series reels. Bedknives are surface ground on the top and front edge and specially packaged for rust prevention. All R&R Bedknives now have an increased front edge grind for added life. All R&R Bedknives are guaranteed against defects in material and workmanship under normal use for the life of the part. You can expect up to double the life over standard bedknives.:

2	R115-1880	115-1880	Bedknife - Razor Tool Steel - 21 Micro Cut .062 - .187 HOC	1	
---	------------------	----------	---	---	--

Detail Description: R&R Razor bedknives are manufactured from premium alloy tool steel steel and then hardened to RC48-51 to match the temper of our Razor reel blades and original equipment premium series reels. Bedknives are surface ground on the top and front edge and specially packaged for rust prevention. All R&R Bedknives now have an increased front edge grind for added life. All R&R Bedknives are guaranteed against defects in material and workmanship under normal use for the life of the part. You can expect up to double the life over standard bedknives.:

2	R150492	150492	Bedknife - Razor Tool Steel - 21 Micro Cut Ext	1	
---	----------------	--------	---	---	--

All original equipment manufacturers names and part numbers are used for identification purposes only, and we are in no way implying that our products are original equipment parts. Prices subject to change without notice.



Replaces Toro Greensmaster Flex 21 Parts

DPA Cutting Unit - Model 04202 & 04208
Reel & Bedknife



Item No	R&R Part No.	OEM Part No.	Description	Qty Req	Order Quantity
---------	--------------	--------------	-------------	---------	----------------

Detail Description: R&R Razor bedknives are manufactured from premium alloy tool steel steel and then hardened to RC48-51 to match the temper of our Razor reel blades and original equipment premium series reels. Bedknives are surface ground on the top and front edge and specially packaged for rust prevention. All R&R Bedknives now have an increased front edge grind for added life. All R&R Bedknives are guaranteed against defects in material and workmanship under normal use for the life of the part. You can expect up to double the life over standard bedknives.:

2	R112-7475	112-7475	Bedknife - Razor Tool Steel - 22 x 3/8 Fairway	1	
---	------------------	----------	---	---	--

Detail Description: R&R Razor bedknives are manufactured from premium alloy tool steel steel and then hardened to RC48-51 to match the temper of our Razor reel blades and original equipment premium series reels. Bedknives are surface ground on the top and front edge and specially packaged for rust prevention. All R&R Bedknives now have an increased front edge grind for added life. All R&R Bedknives are guaranteed against defects in material and workmanship under normal use for the life of the part. You can expect up to double the life over standard bedknives.:

Overhaul Kits and Service Tools

4	R108-3160	108-3160	Overhaul Kit - Reel	1	
---	------------------	----------	---------------------	---	--

Detail Description: Includes: 4 ea: R107-3233 Reel Seal; 2 ea: R107-3238 V-Ring; 1 ea: R20-9500 Washer & R108-3162:

5	R51-0880	51-0880	Bedknife Screw Driver Tool	0	
---	-----------------	---------	----------------------------	---	--

Detail Description: Easily install and remove bed knife screws with the help of a ratchet with 3/8" drive. Tool manufactured with hardened alloy steel.:

Belts

7	R99-2022	99-2022	Belt - Reel Drive	1	
---	-----------------	---------	-------------------	---	--

Other Parts Available

10	R119-9303	105-5799, 119-9303	Frame - Crossmember	1	
----	------------------	-----------------------	---------------------	---	--

11	R106-8428	106-8428	Side Plate - RH	1	
----	------------------	----------	-----------------	---	--

12	R106-8429	106-8429	Side Plate - LH	1	
----	------------------	----------	-----------------	---	--

13	R106-2648-01	106-2648-01	Bed Bar	1	
----	---------------------	-------------	---------	---	--

All original equipment manufacturers names and part numbers are used for identification purposes only, and we are in no way implying that our products are original equipment parts. Prices subject to change without notice.



Replaces Toro Greensmaster Flex 21 Parts

*DPA Cutting Unit - Model 04202 & 04208
Reel & Bedknife*



Item No	R&R Part No.	OEM Part No.	Description	Qty Req	Order Quantity
13	R99-3794-01	99-3794-01, 99-3794-03	Bed Bar - Aggressive	1	
14	R106-2619	106-2619	Seal - Strip	1	
15	R106-6924-03	106-2617-03, 106-6924-03	Cut-Off Bar	1	
16	R110-3986	110-3986, 48-8870, 56-6380	Screw - M6 x 1.0 x 20mm	4	
17	R108-3150	106-8435, 108-3150	Sleeve Assy - Reel	2	
18	R110-7351	110-7351	Bracket - High HOC - 5 1/4	2	
19	R110-7352	110-7352	Screw - HOC 2 5/8 Stainless	2	
20	R150647	105-5342	Plow Bolt - HOC - Front Roller	2	
21	R107-3227	107-3227	Locknut - Reel	1	
22	R107-3233	107-3233	Seal - Reel	4	
23	R32151-92	32151-92	Retaining Ring	2	
24	R251-342	251-342	Bearing - Reel	2	
25	R3290-485	3290-485	Washer - Wave	1	
26	R107-3238	107-3238	V-Ring - Reel	2	
27	R99-2087	99-2087	Spacer	1	
28	R107-3228	107-3228	Spacer - Seal	1	
29	R107-3244	107-3244	O-Ring	1	
30	R33114-035	33114-035	Bolt	2	

All original equipment manufacturers names and part numbers are used for identification purposes only, and we are in no way implying that our products are original equipment parts. Prices subject to change without notice.



Replaces Toro Greensmaster Flex 21 Parts

DPA Cutting Unit - Model 04202 & 04208
Reel & Bedknife



Item No	R&R Part No.	OEM Part No.	Description	Qty Req	Order Quantity
31	R33114-030	33114-030, 42-9520, 48-7730	Bolt - Hex HD M8-1.25 x 30	2	
32	R453009	01-166-0400, 24-10-BD, 24-9-AD, 32-9650, 3256-2, 3256-23, 3256-3, 3256-67, 3290-217, 3556-3, 4-2390, 7-0152	Washer - Flat 5/16 SAE	2	
33	R107-3237	107-3237	Spacer	2	
34	R33024-00	33024-00	Locknut - 8mm x 1.25	2	
35	R65-6270	119-4050, 65-6270	Bolt - Bed Bar	2	
35	R117-9493	117-9493	Bolt - Bed Bar - Hardened	2	
36	R32128-48	32128-48	Locknut - 7/16-20 Flanged	2	
37	R52-2860	119-4150, 52-2860	Washer - Bed Bar Pivot	4	
38	R52-2900	52-2900	Washer - Nylon	4	
39	R52-2890	52-2890	Bushing - Flanged	2	
40	R63-9510	63-9480, 63-9510	Bushing - Rubber For Bed Bar	2	
41	R105-5774	105-5774	Bolt - Shoulder	4	
42	R98-0668	98-0668	Nut - Whiz Lock	4	
43	R93-8064	93-8064	Decal - Warning	1	

All original equipment manufacturers names and part numbers are used for identification purposes only, and we are in no way implying that our products are original equipment parts. Prices subject to change without notice.



Replaces Toro Greensmaster Flex 21 Parts

*DPA Cutting Unit - Model 04202 & 04208
Reel & Bedknife*



Item No	R&R Part No.	OEM Part No.	Description	Qty Req	Order Quantity
44	R104-2628	104-2628	Bolt - Hex Washer M6-1.0 x 12	3	
45	R33124-025	33124-025	Bolt - Carriage M8-1.25 x 25	2	
46	R33114-016	33114-016, 42-9230, 42-9270, 48-7680, 48-7690, 48-7700	Bolt - Hx HD 8mm x 1.25 x 15	2	
47	R33114-010	33114-010	Bolt - Hex HD M8-1.25 x 10	2	
48	R3255-8	3255-8	Washer - Lock 5/16 Ext	2	
49	R99-2097	99-2097	Detent - Bed Bar Adjuster	2	
50	R106-5363	106-5363	Shaft - Adjusting - Bed Bar - Stainless	2	
51	R106-5344	106-5344	Bushing - Flanged and Keyed	4	
52	R106-5335	106-5335	Wave Washer - Reel Adjusting	2	
53	R32120-93	32120-93	Snap Ring - HD	2	
54	R99-2096	99-2096	Screw - Bed Bar Adjustment - M10 Thrd 1 End	2	
55	R99-2098	99-2098	Washer - Bed Bar Adjuster	2	
56	R99-3755	99-3755	Spring - Bed Bar Adjusting	2	
57	R33025-00	32025-00, 33025-00	Locknut - 10mm x 1.5 Jam	2	
58	R110-2389	110-2389	Shaft - Hex	1	
59	R99-3757	99-3757	Coupling - Flex	1	
60	R32121-69	119-4033, 120-8095, 32121-69	Pin - Roll 1/4 x 1-1/4	2	

All original equipment manufacturers names and part numbers are used for identification purposes only, and we are in no way implying that our products are original equipment parts. Prices subject to change without notice.



Replaces Toro Greensmaster Flex 21 Parts

*DPA Cutting Unit - Model 04202 & 04208
Reel & Bedknife*



Item No	R&R Part No.	OEM Part No.	Description	Qty Req	Order Quantity
61	R110-2382	110-2382	Shaft - Reel Drive	1	
62	R338763	107-3205	Seal	1	
63	R110-2381	110-2381	Spacer	1	
64	R251-336	251-336	Bearing	2	
65	R99-2079	99-2079	Spacer	1	
66	R110-2391	110-2391	Washer	1	
67	R104-2610	104-2610	Nut - HF M12 x 1.75	2	
68	R150476	3-3816, 3-6462, 57-4910	Screw - Bedknife 5/16-18 x 5/8	13	
70	R14M7298	104-2612, 33004-00	Nut - 8mm x 1.25 Flanged	3	
71	R105-9943	105-9943	Washer - Thrust	1	
72	R105-5711	105-5711, 119-4165	Shim - Roller	2	
73	R105-5710	105-5710, 119-4166	Spacer - Roller	2	
74	R105-5712	105-5712, 119-4157	Retainer - Roller	2	
75	R104-2603	104-2603, 119-4158	Washer - HOC Bracket	2	
76	R107-3226-01	107-3226-01	Pitch Arm - RH	1	
77	R107-7602-01	107-7602-01	Pitch Arm - LH	1	

All original equipment manufacturers names and part numbers are used for identification purposes only, and we are in no way implying that our products are original equipment parts. Prices subject to change without notice.