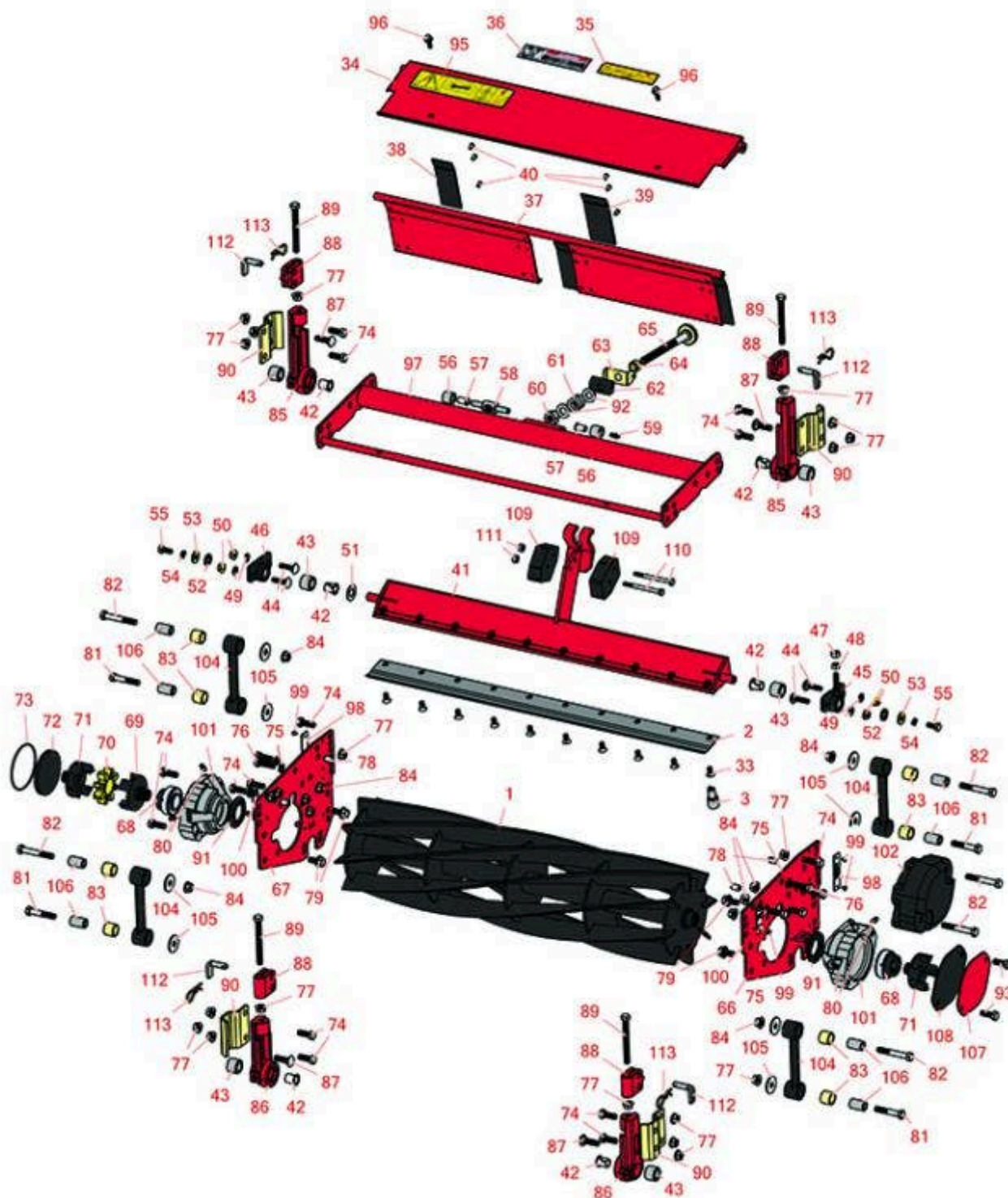




## Replaces Toro Reelmaster 3100-D Parts

27in Cutting Unit - Models 03210, 03237 & 03239

Reel & Bedknife



All original equipment manufacturers names and part numbers are used for identification purposes only, and we are in no way implying that our products are original equipment parts. Prices subject to change without notice.



## Replaces Toro Reelmaster 3100-D Parts

27in Cutting Unit - Models 03210, 03237 & 03239  
Reel & Bedknife



| Item No | R&R Part No. | OEM Part No. | Description | Qty Req | Order Quantity |
|---------|--------------|--------------|-------------|---------|----------------|
|---------|--------------|--------------|-------------|---------|----------------|

### R&R Reels, Lifetime Guaranteed

|   |                 |   |                          |   |  |
|---|-----------------|---|--------------------------|---|--|
| 1 | <b>R94-3631</b> | 93-8839,<br>94-3631,<br>99-3468,<br>99-3482 | Reel - 5 Blade Fits 27x7 | 1 |  |
|---|-----------------|---|--------------------------|---|--|

*Detail Description: R&R Reel blades are expertly crafted from premium high carbon-boron alloy steel, heat-treated to perfectly complement both R&R and OEM bedknives. Each reel undergoes precision cylindrical grinding on bearing surfaces, followed by relief grinding for optimal performance. Advanced computer balancing ensures extended reel and bearing life. Backed by our lifetime guarantee against defects in materials and craftsmanship under normal use, R&R Reels deliver unmatched durability and cutting precision you can trust.:*

|   |                 |   |                          |   |  |
|---|-----------------|---|--------------------------|---|--|
| 1 | <b>R94-3630</b> | 93-8833,<br>94-3630,<br>99-3469,<br>99-3483 | Reel - 8 Blade Fits 27x7 | 1 |  |
|---|-----------------|---|--------------------------|---|--|

*Detail Description: R&R Reel blades are expertly crafted from premium high carbon-boron alloy steel, heat-treated to perfectly complement both R&R and OEM bedknives. Each reel undergoes precision cylindrical grinding on bearing surfaces, followed by relief grinding for optimal performance. Advanced computer balancing ensures extended reel and bearing life. Backed by our lifetime guarantee against defects in materials and craftsmanship under normal use, R&R Reels deliver unmatched durability and cutting precision you can trust.:*

|   |                  |          |                      |   |  |
|---|------------------|----------|----------------------|---|--|
| 1 | <b>R105-6768</b> | 105-6768 | Reel - 11 Blade 27x7 | 1 |  |
|---|------------------|----------|----------------------|---|--|

*Detail Description: R&R Reel blades are manufactured from high carbon-boron alloy steel and then hardened to RC46-49 to match the temper of our bedknives and original equipment bedknives. All R&R Reels are cylindrically ground on bearing surfaces and then relief ground. Reels are then precision computer balanced for extended bearing and reel life. R&R Products Reels are guaranteed against defects in material and workmanship for the life of the reel under normal use.:*

### R&R Bedknives, Lifetime Guaranteed

|   |                 |                                  |                                |   |  |
|---|-----------------|----------------------------------|--------------------------------|---|--|
| 2 | <b>R62-5180</b> | 105-6785,<br>61-0800,<br>62-5180 | Bedknife - Lowcut - 27 in Unit | 1 |  |
|---|-----------------|----------------------------------|--------------------------------|---|--|

All original equipment manufacturers names and part numbers are used for identification purposes only, and we are in no way implying that our products are original equipment parts. Prices subject to change without notice.



## Replaces Toro Reelmaster 3100-D Parts

27in Cutting Unit - Models 03210, 03237 & 03239  
Reel & Bedknife



| Item No | R&R Part No. | OEM Part No. | Description | Qty Req | Order Quantity |
|---------|--------------|--------------|-------------|---------|----------------|
|---------|--------------|--------------|-------------|---------|----------------|

*Detail Description:* R&R Bedknives are manufactured from high carbon-boron alloy steel and then hardened to RC46-49 to match the temper of our reel blades and original equipment reels. Bedknives are surface ground on the top and front edge and straightened three times before being packaged with oil for rust prevention. All R&R Bedknives now have an increased front edge grind for added life. All R&R Bedknives are guaranteed against defects in material and workmanship under normal use for the life of the part.:

|   |                  |          |                                 |   |  |
|---|------------------|----------|---------------------------------|---|--|
| 2 | <b>R104-1380</b> | 104-1380 | Bedknife - Highcut - 27 in Unit | 1 |  |
|---|------------------|----------|---------------------------------|---|--|

*Detail Description:* R&R Bedknives are manufactured from high carbon-boron alloy steel and then hardened to RC46-49 to match the temper of our reel blades and original equipment reels. Bedknives are surface ground on the top and front edge and straightened three times before being packaged with oil for rust prevention. All R&R Bedknives now have an increased front edge grind for added life. All R&R Bedknives are guaranteed against defects in material and workmanship under normal use for the life of the part.:

### R&R Razor Tool Steel Bedknives, Lifetime Guaranteed

|   |                |  |  |   |  |
|---|----------------|--|--|---|--|
| 2 | <b>R150469</b> |  | Bedknife - Razor Tool Steel - 27 x 1/2 Fairway | 1 |  |
|---|----------------|--|--|---|--|

*Detail Description:* R&R Razor bedknives are manufactured from premium alloy tool steel steel and then hardened to RC48-51 to match the temper of our Razor reel blades and original equipment premium series reels. Bedknives are surface ground on the top and front edge and specially packaged for rust prevention. All R&R Bedknives now have an increased front edge grind for added life. All R&R Bedknives are guaranteed against defects in material and workmanship under normal use for the life of the part. You can expect up to double the life over standard bedknives.:

|   |                  |          |   |   |  |
|---|------------------|----------|---|---|--|
| 2 | <b>R112-8910</b> | 112-8910 | Bedknife - Razor Tool Steel - 27 High Cut | 0 |  |
|---|------------------|----------|---|---|--|

*Detail Description:* R&R Razor bedknives are manufactured from premium alloy tool steel steel and then hardened to RC48-51 to match the temper of our Razor reel blades and original equipment premium series reels. Bedknives are surface ground on the top and front edge and specially packaged for rust prevention. All R&R Bedknives now have an increased front edge grind for added life. All R&R Bedknives are guaranteed against defects in material and workmanship under normal use for the life of the part. You can expect up to double the life over standard bedknives.:

### Service Tools

|   |                 |         |                            |   |  |
|---|-----------------|---------|----------------------------|---|--|
| 3 | <b>R51-0880</b> | 51-0880 | Bedknife Screw Driver Tool | 0 |  |
|---|-----------------|---------|----------------------------|---|--|

*Detail Description:* Easily install and remove bed knife screws with the help of a ratchet with 3/8" drive. Tool manufactured with hardened alloy steel.:

All original equipment manufacturers names and part numbers are used for identification purposes only, and we are in no way implying that our products are original equipment parts. Prices subject to change without notice.



## Replaces Toro Reelmaster 3100-D Parts

27in Cutting Unit - Models 03210, 03237 & 03239  
Reel & Bedknife



| Item No | R&R Part No. | OEM Part No. | Description | Qty Req | Order Quantity |
|---------|--------------|--------------|-------------|---------|----------------|
|---------|--------------|--------------|-------------|---------|----------------|

### Other Parts Available

|  |                 |                                 |   |    |  |
|--|-----------------|---------------------------------|---|----|--|
| 33   | <b>R150476</b>  | 3-3816,<br>3-6462,<br>57-4910   | Screw - Bedknife 5/16-18 x 5/8              | 10 |  |
| 33   | <b>R150475</b>  | 3-6462                          | Screw - Bedknife Stainless<br>5/16-18 x 5/8 | 10 |  |
| <i>Detail Description: Pre-Packaged in bags of 50:</i> |                 |                                 |   |    |  |
| 34   | <b>R94-3621</b> | 94-3621                         | Shield - Top Incl. Safety Decal 27 in       | 1  |  |
| 34   | <b>R94-5053</b> | 94-5053                         | Shield - Top - Fits 32 in Units             | 1  |  |
| 35   | <b>R93-6688</b> | 93-6688                         | Decal - Warning                             | 1  |  |
| 36   | <b>R67-7960</b> | 27-2890,<br>62-5070,<br>67-7960 | Decal - Warning                             | 1  |  |
| 37   | <b>R93-8849</b> | 61-1130,<br>93-8817,<br>93-8849 | Shield - Rear Grass Fits 27 in Units        | 1  |  |
| 37   | <b>R94-4969</b> | 94-4969                         | Shield - Rear Grass 32 in Units             | 1  |  |
| 38   | <b>R61-3280</b> | 61-3280                         | Cover - Rubber Side                         | 2  |  |
| 39   | <b>R61-3290</b> | 61-3290                         | Cover - Rubber Center                       | 2  |  |
| 40   | <b>R700382</b>  | 700382                          | Rivet - Guard                               | 12 |  |
| 41   | <b>R95-8739</b> | 95-8739,<br>95-8739-01          | Bed Bar - Fits 27 Units                     | 1  |  |
| 41   | <b>R95-8748</b> | 95-8748-01                      | Bed Bar - Fits 32 Units                     | 1  |  |
| 42   | <b>R56-9520</b> | 56-9520                         | Bushing - Nyliner                           | 2  |  |
| 43   | <b>R56-9510</b> | 56-9510                         | Bushing - Rubber For Bed Bar / RI           | 2  |  |

All original equipment manufacturers names and part numbers are used for identification purposes only, and we are in no way implying that our products are original equipment parts. Prices subject to change without notice.



## Replaces Toro Reelmaster 3100-D Parts

27in Cutting Unit - Models 03210, 03237 & 03239  
Reel & Bedknife



| Item No | R&R Part No. | OEM Part No.  | Description                      | Qty Req | Order Quantity |
|---------|--------------|---|----------------------------------|---------|----------------|
| 44      | R3230-2      | 01-173-0508,<br>25-25-AGD,<br>3230-16,<br>3230-2,<br>513624,<br>513633,<br>513635,<br>900038P   | Bolt - Carriage                  | 4       |                |
| 45      | R16-9769     | 16-9769   | Housing - Bed Bar - Adj. Side    | 1       |                |
| 46      | R14-4459     | 14-4459   | Housing - w/Bushing For Bed Bar  | 1       |                |
| 47      | R444754      | 01-189-0518,<br>3296-4  | Locknut - 5/16-24 Center         | 1       |                |
| 48      | R3219-2      | 01-188-0524,<br>22-12-BJKD,<br>3219-2,<br>915720  | Nut - 5/16-24 Zinc               | 1       |                |
| 49      | R3256-74     | 3256-74   | Washer - Flat                    | 4       |                |
| 50      | R104-8300    | 104-8300,<br>104-8300 ,<br>119-4041   | Locknut - 5/16-18 Flanged Y/Zinc | 4       |                |
| 51      | R61-1950     | 61-1950   | Washer - Nylon - Bed Bar         | 1       |                |
| 52      | R62-7120     | 62-7120   | Washer                           | 1       |                |
| 53      | R3256-56     | 3256-56,<br>60-4750   | Washer                           | 1       |                |
| 54      | R3253-4      | 01-166-0110,<br>01-166-0510,<br>23-10-GD,<br>24-7170,<br>30-8520,<br>3253-4,<br>48-9350,<br>48-9360,<br>48-9570,<br>68-9420,<br>99-7577 | Washer - Lock 5/16 Zinc          | 1       |                |

All original equipment manufacturers names and part numbers are used for identification purposes only, and we are in no way implying that our products are original equipment parts. Prices subject to change without notice.



## Replaces Toro Reelmaster 3100-D Parts

27in Cutting Unit - Models 03210, 03237 & 03239  
Reel & Bedknife



| Item No | R&R Part No. | OEM Part No.  | Description                  | Qty Req | Order Quantity |
|---------|--------------|---|------------------------------|---------|----------------|
| 55      | R322-3       | 01-150-1420,<br>01-178-0506,<br>20-24-AD,<br>20-24-AGD,<br>322-3,<br>48-9270,<br>513339,<br>908017P | Bolt - Hex HD 5/16-18 x 3/4  | 1       |                |
| 56      | R62-5510     | 52-2870,<br>62-5510   | Bushing                      | 2       |                |
| 57      | R52-2890     | 52-2890   | Bushing - Flanged            | 2       |                |
| 58      | R57-5260     | 107-7409,<br>57-5260  | Pivot - 1/2-20 - Bed Bar     | 1       |                |
| 59      | R302-18      | 302-18  | Zerk - Grease Press Style    | 1       |                |
| 60      | R3296-62     | 3296-62   | Locknut - 1/2-20 LH Jam      | 1       |                |
| 61      | R57-5270     | 57-5270   | Spring - Adjusting Handle    | 1       |                |
| 62      | R93-2892     | 93-2892   | Pivot - Plastic - Bed Bar    | 1       |                |
| 63      | R95-8752     | 93-9767,<br>95-8752   | Arm - Spring                 | 1       |                |
| 64      | R93-2959     | 93-2959   | Spacer - Bed Bar Assy        | 1       |                |
| 65      | R95-8877     | 106-7536,<br>93-2957,<br>95-2762,<br>95-8877  | Handle - Bed Bar Adjustment  | 1       |                |
| 66      | R94-3697-01  | 94-3697,<br>94-3697-01  | Plate - Side Reel LH         | 1       |                |
| 67      | R94-3695-01  | 94-3695,<br>94-3695-01  | Plate - Side Reel RH         | 1       |                |
| 68      | R100-4926    | 100-4926  | Bearing - Reel Self Aligning | 2       |                |
| 69      | R93-8825     | 93-8825   | Coupling - RH Reel           | 1       |                |

All original equipment manufacturers names and part numbers are used for identification purposes only, and we are in no way implying that our products are original equipment parts. Prices subject to change without notice.



## Replaces Toro Reelmaster 3100-D Parts

27in Cutting Unit - Models 03210, 03237 & 03239  
Reel & Bedknife



| Item No | R&R Part No.    | OEM Part No.  | Description                     | Qty Req | Order Quantity |
|---------|-----------------|---|---------------------------------|---------|----------------|
| 70      | <b>R93-8827</b> | 93-8827   | Spider - Reel Coupling          | 1       |                |
| 71      | <b>R93-8826</b> | 93-8826   | Coupling - LH Reel              | 1       |                |
| 72      | <b>R94-2703</b> | 94-2703   | Plug - Plastic Spindle Housing  | 1       |                |
| 73      | <b>R353-949</b> | 353-949,<br>60-3520   | O-Ring                          | 2       |                |
| 74      | <b>R323-6</b>   | 01-150-0010,<br>01-178-0608,<br>20-47-AD,<br>20-47-AGD,<br>3224-2,<br>323-6,<br>49-3510,<br>908034P,<br>908332            | Bolt - Hex HD 3/8-16 x 1 GR5 YZ | 10      |                |
| 75      | <b>R3254-6</b>  | 01-166-0010,<br>01-166-0280,<br>01-166-0610,<br>3253-5,<br>3254-18,<br>3254-6,<br>3290-223,<br>48-9370                    | Washer - Lock 3/8               | 4       |                |
| 76      | <b>R400264</b>  | 01-150-0180,<br>01-178-0610,<br>20-48-AD,<br>20-48-AGD,<br>32-9160,<br>3224-3,<br>323-29,<br>323-7,<br>400264,<br>908035P | Bolt - Hex HD 3/8-16 x 1-1/4    | 2       |                |

All original equipment manufacturers names and part numbers are used for identification purposes only, and we are in no way implying that our products are original equipment parts. Prices subject to change without notice.



## Replaces Toro Reelmaster 3100-D Parts

27in Cutting Unit - Models 03210, 03237 & 03239  
Reel & Bedknife



| Item No | R&R Part No. | OEM Part No.   | Description              | Qty Req | Order Quantity |
|---------|--------------|--|--------------------------|---------|----------------|
| 77      | R3296-39     | 32127-25,<br>32128-36,<br>3290-357,<br>3296-17,<br>3296-22,<br>3296-39,<br>915663P,<br>99-7443   | Locknut - 3/8-16 Nylon   | 6       |                |
| 78      | R32121-36    | 32121-36   | Pin-Spring               | 4       |                |
| 79      | R110-1718    | 110-1718   | Screw-HHF                | 4       |                |
| 80      | R302-5       | 21-6010,<br>302-11,<br>302-37,<br>302-47,<br>302-5,<br>302-57,<br>302-58,<br>302-6,<br>31-0300,<br>32-9660,<br>60-0800,<br>62-3880,<br>92-4181 | Fitting - Grease         | 4       |                |
| 81      | R323-10      | 01-150-0680,<br>01-178-0616,<br>100-6663,<br>100-8320,<br>1489,<br>20-51-AD,<br>20-51-AGD,<br>3224-6,<br>323-10,<br>323-35,<br>908336          | Bolt - Hex HD 3/8-16 x 2 | 4       |                |

All original equipment manufacturers names and part numbers are used for identification purposes only, and we are in no way implying that our products are original equipment parts. Prices subject to change without notice.



## Replaces Toro Reelmaster 3100-D Parts

27in Cutting Unit - Models 03210, 03237 & 03239  
Reel & Bedknife



| Item No | R&R Part No. | OEM Part No.  | Description                       | Qty Req | Order Quantity |
|---------|--------------|---|-----------------------------------|---------|----------------|
| 82      | R101526      | 01-150-0970,<br>01-178-0620,<br>20-53-AGD,<br>321-11,<br>3224-8,<br>323-11,<br>323-12,<br>323-31,<br>323-4,<br>323-47 | Bolt - Hex HD 3/8-16 x 2-1/2 GR5  | 6       |                |
| 83      | R94-8945     | 94-8945   | Bushing - Bronze - Link Bar       | 2       |                |
| 84      | R32128-19    | 104-8301,<br>104-9301,<br>32128-19  | Locknut - 3/8-16 Flanged Top Lock | 8       |                |
| 85      | R14-4479     | 14-4479   | Bracket - Assy - Rear Roller      | 2       |                |
| 86      | R14-4489     | 14-4489   | Bracket - Assy - Front Roller     | 2       |                |
| 87      | R3231-25     | 01-173-0610,<br>30-9970,<br>3231-25,<br>3231-3,<br>900064P  | Bolt - Carriage 3/8-16 x 1-1/4    | 4       |                |
| 88      | R61-0420     | 61-0420,<br>61-0420-01  | Support - HOC                     | 4       |                |
| 89      | R61-0790     | 323-57,<br>61-0790  | Bolt - Roller Adjustment          | 4       |                |
| 90      | R61-0910     | 61-0910   | Bracket                           | 4       |                |
| 91      | R105-6761    | 105-6761  | Seal                              | 2       |                |
| 92      | R29-8910-01  | 29-8910   | Washer - Flat 1/2                 | 2       |                |
| 93      | R323-2       | 01-178-0604,<br>323-2   | Bolt - Hex HD 3/8-16 x 1          | 2       |                |
| 95      | R93-8064     | 93-8064   | Decal - Warning                   | 1       |                |

All original equipment manufacturers names and part numbers are used for identification purposes only, and we are in no way implying that our products are original equipment parts. Prices subject to change without notice.



## Replaces Toro Reelmaster 3100-D Parts

27in Cutting Unit - Models 03210, 03237 & 03239  
Reel & Bedknife



| Item No | R&R Part No.        | OEM Part No.                                      | Description                          | Qty Req | Order Quantity |
|---------|---------------------|---|--------------------------------------|---------|----------------|
| 96      | <b>R32144-10</b>    | 32140-81,<br>32144-10,<br>32144-3,<br>34-140-AMVD | Bolt - 1/4-20 x 3/4 Serrated Hx Wshr | 2       |                |
| 97      | <b>R95-8753-01</b>  | 95-8753,<br>95-8753-01                            | Reel Frame - 27 in                   | 1       |                |
| 97      | <b>R95-8755-01</b>  | 95-8755,<br>95-8755-01                            | Reel Frame - 32 in                   | 1       |                |
| 98      | <b>R61-3800</b>     | 61-3800   | Plate - HOC Rear                     | 2       |                |
| 99      | <b>R3290-55</b>     | 3290-55   | Rivet - 5/32 x 3/8 Pop Rivet         | 8       |                |
| 100     | <b>R61-3790</b>     | 61-3790   | Plate-HOC, Front                     | 2       |                |
| 101     | <b>R99-3404</b>     | 93-6930,<br>99-3404                               | Housing-Bearing                      | 2       |                |
| 102     | <b>R105-0171-03</b> | 105-0171-03                                       | Weight-End                           | 1       |                |
| 104     | <b>R16-9759</b>     | 16-9759   | Link Assy                            | 4       |                |
| 105     | <b>R93-8806</b>     | 93-8806   | Washer-Hardened                      | 16      |                |
| 106     | <b>R93-6981</b>     | 93-6981   | Spacer                               | 8       |                |
| 107     | <b>R93-6960</b>     | 93-6960   | Cover - Bearing Holder               | 1       |                |
| 108     | <b>R94-5979</b>     | 94-5979   | Gasket                               | 1       |                |
| 109     | <b>R99-3472</b>     | 99-3472   | Weight                               | 2       |                |
| 110     | <b>R321-23</b>      | 321-23  | Bolt - Hx HD 1/4-20 x 3              | 0       |                |
| 110     | <b>R400124</b>      | 01-178-0420,<br>20-11-AD,<br>321-15               | Bolt - Hex HD 1/4-20 x 2-1/2 GR5     | 2       |                |

All original equipment manufacturers names and part numbers are used for identification purposes only, and we are in no way implying that our products are original equipment parts. Prices subject to change without notice.



## Replaces Toro Reelmaster 3100-D Parts

27in Cutting Unit - Models 03210, 03237 & 03239  
Reel & Bedknife



| Item No | R&R Part No.     | OEM Part No.   | Description           | Qty Req | Order Quantity |
|---------|------------------|--|-----------------------|---------|----------------|
| 111     | <b>R301504</b>   | 2296-42,<br>301504,<br>32127-24,<br>32128-33,<br>32146-17,<br>3296-16,<br>3296-42,<br>3296-42 ,<br>915661P | Locknut - ESNA 1/4-20 | 2       |                |
| 112     | <b>R71-3690</b>  | 61-0630,<br>71-3690  | Spade - Bent          | 4       |                |
| 113     | <b>R3290-467</b> | 3290-467   | Pin-Hair              | 4       |                |

All original equipment manufacturers names and part numbers are used for identification purposes only, and we are in no way implying that our products are original equipment parts. Prices subject to change without notice.