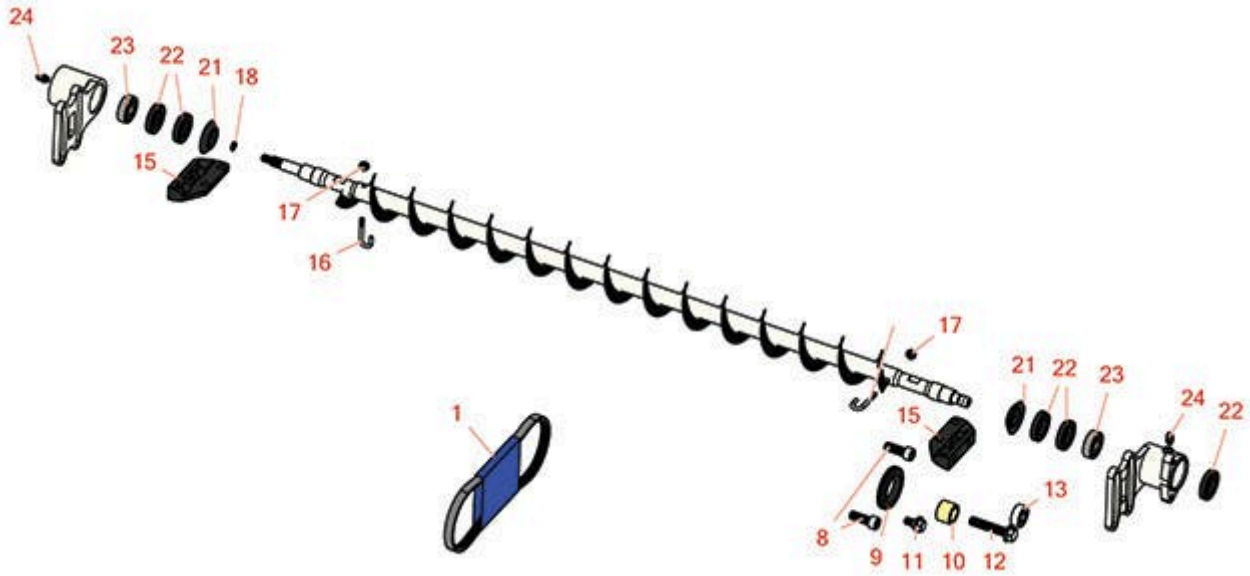




# Replaces Toro Reelmaster 3100-D Parts

32in DPA Cutting Unit - Model 03191

Rear Roller Brush



All original equipment manufacturers names and part numbers are used for identification purposes only, and we are in no way implying that our products are original equipment parts. Prices subject to change without notice.



# Replaces Toro Reelmaster 3100-D Parts

32in DPA Cutting Unit - Model 03191

Rear Roller Brush



Item No	R&R Part No.	OEM Part No.	Description	Qty Req	Order Quantity
<b>Belts</b>					
1	<b>R150622</b>	115-0828	Belt- Brush Fits 7in Reels	1	
<b>Other Parts Available</b>					
8	<b>R3274-7</b>	3247-7, 3274-7	Bolt - Soc HD Cap 3/8-16 x 1	2	
9	<b>R240-7</b>	240-7	Grommet - Rubber - 2 in OD	1	
10	<b>R108-4477</b>	108-4477	Spacer	1	
11	<b>R27-0411</b>	27-0411	Bolt - Shoulder	1	
12	<b>R66-9302</b>	3234-20, 66-9302	Screw - HHF, Whiz	1	
13	<b>R110-1701</b>	110-1701	Bearing	1	
15	<b>R108-4480</b>	108-4480	Bracket - Rear Roller Brush	2	
16	<b>R105-9632</b>	105-9632	Bolt - J	2	
17	<b>R3296-2</b>	32127-10, 3296-2, 9157404	Nut - #10 Lock	2	
18	<b>R237-22</b>	107-8844, 237-22, 237-78	O-Ring	1	
21	<b>R108-4172</b>	108-4172	Seal - Excluder	2	
22	<b>R106-8530</b>	106-8530	Seal - Oil	5	
23	<b>R95-0707</b>	95-0707	Bearing - Self Aligning	2	

All original equipment manufacturers names and part numbers are used for identification purposes only, and we are in no way implying that our products are original equipment parts. Prices subject to change without notice.



# Replaces Toro Reelmaster 3100-D Parts

32in DPA Cutting Unit - Model 03191

Rear Roller Brush



Item No	R&R Part No.	OEM Part No.	Description	Qty Req	Order Quantity
24	<b>R302-5</b>	21-6010, 302-11, 302-37, 302-47, 302-5, 302-57, 302-58, 302-6, 31-0300, 32-9660, 60-0800, 62-3880, 92-4181	Fitting - Grease	2	

All original equipment manufacturers names and part numbers are used for identification purposes only, and we are in no way implying that our products are original equipment parts. Prices subject to change without notice.