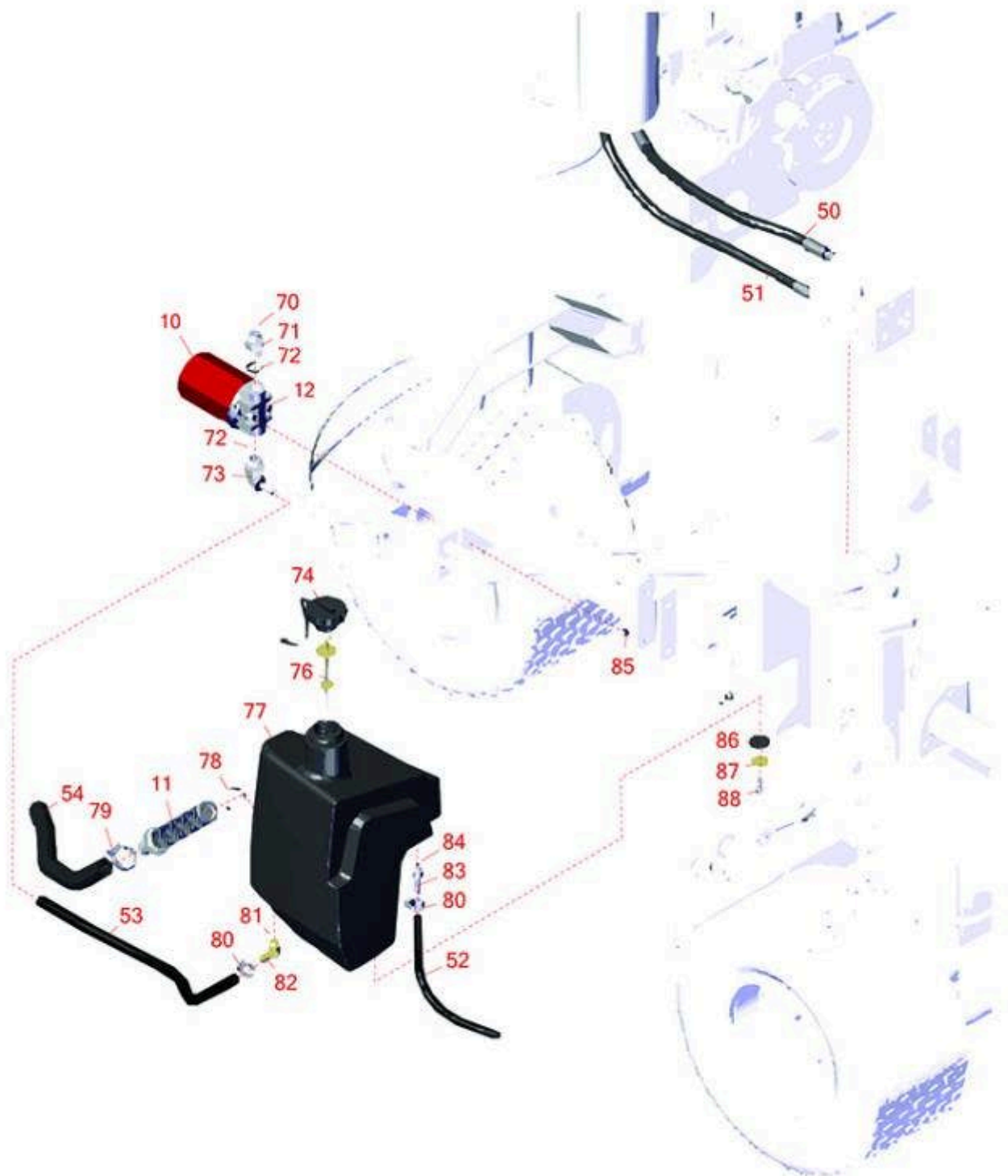




# Replaces Toro Reelmaster 3100-D Parts

Traction Unit - Model 03200

Hydraulic Tank



All original equipment manufacturers names and part numbers are used for identification purposes only, and we are in no way implying that our products are original equipment parts. Prices subject to change without notice.



# Replaces Toro Reelmaster 3100-D Parts

Traction Unit - Model 03200

Hydraulic Tank



Item No	R&R Part No.	OEM Part No.	Description	Qty Req	Order Quantity
---------	--------------	--------------	-------------	---------	----------------

## Filters

10	<b>R86-3010</b>	23-9740, 239470, 28-1370, 281370, 353-387, 353387, 54-0110, 540110, 76-6490, 86-3010, 863010, Dec-70	Baldwin Hydraulic Oil Filter	1	
10	<b>RRF10611</b>	01-317-0240, 23-9740, 54-0110	SilverGuard Hydraulic Oil Filter	1	
10	<b>RRF10610</b>	28-1370, 353-387, 353387, 54-0110, 76-6490, 86-3010	SilverGuard Oil Filter	1	
11	<b>R104-7546</b>	104-7546, 104-7546`	Strainer - Tank	1	
12	<b>R150924</b>		Filter Head Assy	1	
12	<b>R92-5821</b>	86-3000, 92-5821	Filter - Head	1	

## Hoses

50	<b>R95-8829</b>	95-8829	Hydraulic Hose Assy	1	
51	<b>R106-4197</b>	106-4197	Hydraulic Hose Assy	1	
52	<b>R104-4846</b>	104-4846	Hose	1	
53	<b>R99-3501</b>	99-3501	Hose	1	
54	<b>R104-4845</b>	104-4845	Hose - Suction	1	

All original equipment manufacturers names and part numbers are used for identification purposes only, and we are in no way implying that our products are original equipment parts. Prices subject to change without notice.



# Replaces Toro Reelmaster 3100-D Parts

Traction Unit - Model 03200

Hydraulic Tank



Item No	R&R Part No.	OEM Part No.	Description	Qty Req	Order Quantity
---------	--------------	--------------	-------------	---------	----------------

## Other Parts Available

70	<b>R237-65</b>	237-65, 237.65	O-Ring	1	
71	<b>R340-8</b>	340-8	Adapter	1	
72	<b>R237-81</b>	237-81, 237.81, 327-81	O-Ring	2	
73	<b>R95-8814</b>	95-8814	Fitting - Barbed 90 Deg	1	
74	<b>R93-7160</b>	93-3103, 93-7160	Cap - Hyd Oil w/Tether	1	
76	<b>R75-3710</b>	75-3710	Dipstick - Hyd Oil	1	
77	<b>R104-4840</b>	104-4840	Tank - Hyd	1	
78	<b>R340-136</b>	340-136	O-Ring	1	
79	<b>R2412-34</b>	2412-34, 31-0120	Clamp - Hose .75-1.5	1	

*Detail Description: Stainless steel hose clamp with 5/16" slotted hex head, heat treated carbon steel, plated with zinc plus trivalent chromate for long lasting protection.:*

79	<b>RG116</b>	2412-34, 31-0120, 94-3188, 94-3189, 94-3193, 94-3203, 94-3204	Clamp - Hose 3/4" x 1-1/2" - Box/10	2	
----	--------------	---	--	---	--

*Detail Description: Stainless steel hose clamps with 5/16" slotted hex head, heat treated carbon steel, plated with zinc plus trivalent chromate for long lasting protection. Good general-purpose clamp. Box of 10.:*

All original equipment manufacturers names and part numbers are used for identification purposes only, and we are in no way implying that our products are original equipment parts. Prices subject to change without notice.



## Replaces Toro Reelmaster 3100-D Parts

*Traction Unit - Model 03200*

*Hydraulic Tank*



Item No	R&R Part No.	OEM Part No.	Description	Qty Req	Order Quantity
79	<b>R2412-129</b>	2412-129, 94-3188, 94-3189, 94-3193, 94-3203, 94-3204	Clamp - Worm 9/16-1 1/4	2	
80	<b>R2412-36</b>	2210-87, 2412-36, 31-9140, 93-5818, 99-0772	Clamp - Hose 1/2	3	
81	<b>R237-79</b>	237-79	O-Ring	1	
82	<b>R354-126</b>	354-126	Hydraulic Fitting - 45 Deg	1	
83	<b>R353-979</b>	353-979	Fitting - Straight	1	
84	<b>R237-42</b>	237-42, 31-4160	O-Ring	1	
85	<b>R3234-13</b>	3234-13, 960151P	Bolt - Flanged Hex 1/4-20	2	
86	<b>R240-11</b>	240-11	Bushing - Rubber - Flanged	4	
87	<b>R63-8410</b>	53-6380, 63-4810, 63-8410	Washer - Isolator Bushing	4	
88	<b>R3234-11</b>	3234-11	Bolt - Hex Washer HD	4	

All original equipment manufacturers names and part numbers are used for identification purposes only, and we are in no way implying that our products are original equipment parts. Prices subject to change without notice.