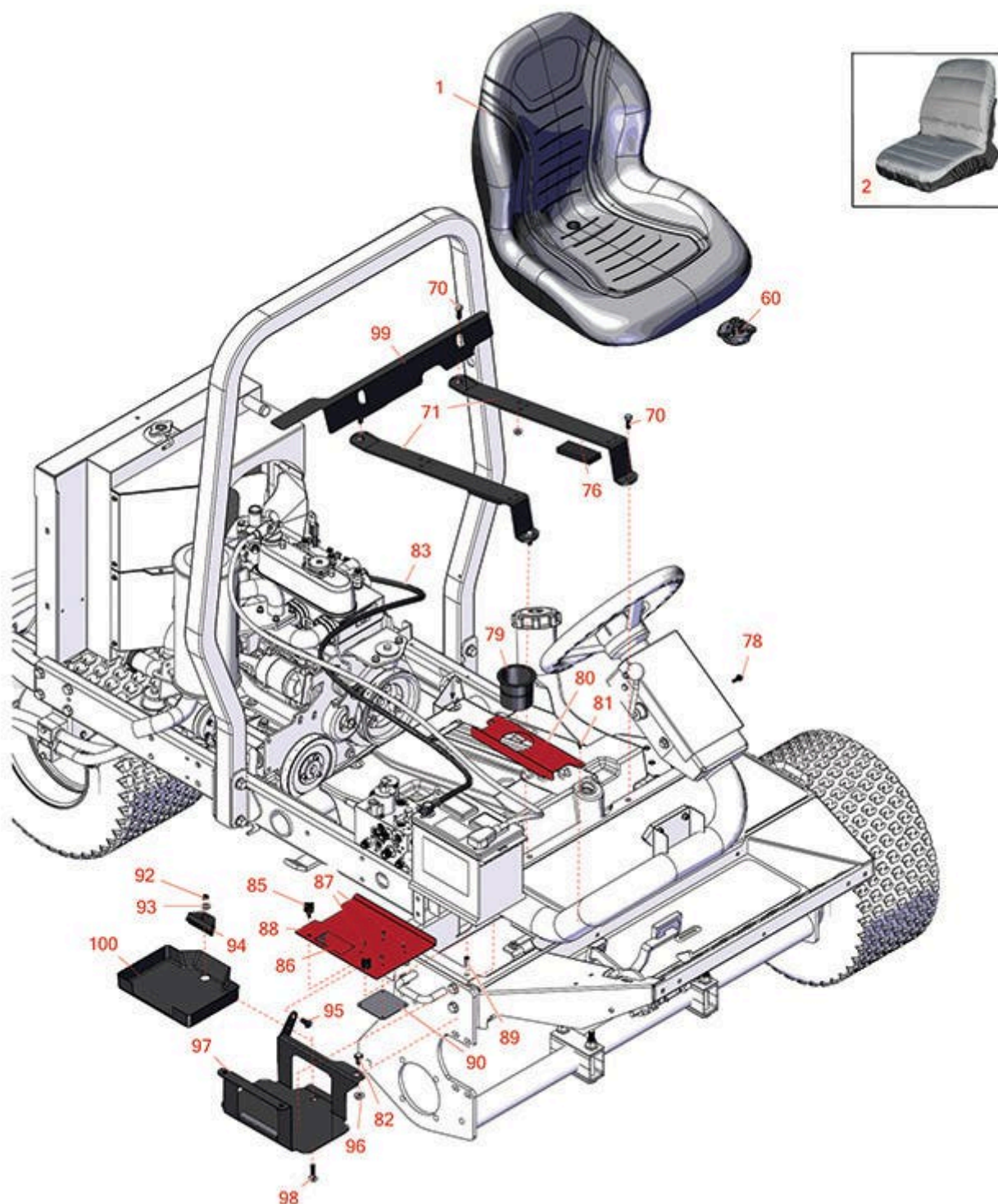




Replaces Toro Reelmaster 3100-D Parts

Traction Unit - Model 03201

Battery & Seat



All original equipment manufacturers names and part numbers are used for identification purposes only, and we are in no way implying that our products are original equipment parts. Prices subject to change without notice.



Replaces Toro Reelmaster 3100-D Parts

Traction Unit - Model 03201

Battery & Seat



| Item No | R&R Part No. | OEM Part No. | Description | Qty Req | Order Quantity |
|---------|--------------|--|--------------------------|---------|----------------|
| 1 | RMXB200GY | 100-3187, 104-4620, 104-7620, 21-4880, 351-59, 351-76, 49-8130, 63-9410, 66-5400, 75-9190, 750105, 92-6280, MXB200GY | Milsco Seat XB200 - Grey | 1 | |

Tech Note: This seat will not accept seat belts:

*Detail Description: The Milsco XB200 high back seat features a comfortable vacuum formed, waterproof vinyl cover with central drain hole. Ergonomic foam cushion provides operator comfort. Cover will not crack or peel. Rugged blow-molded plastic frame construction. Allows for Twist-in operator presence switch. Seat: 19in W x 24in D x 21in H. Multiple pre-drilled mounting patterns. Grey. Made in U.S.A.
Please note: Due to excessive air freight charges, this item will be shipped ground freight.:*

| | | | | | |
|---|-----------|----------|-------------------------|---|--|
| 2 | R120-5179 | 120-5179 | Large Seat Cover - Gray | 1 | |
|---|-----------|----------|-------------------------|---|--|

Gauges and controls

| | | | | | |
|----|---------|---------------|---|---|--|
| 60 | R151541 | R&R ON, LY | Delta Seat Switch - Twist Mount 1 Pole Normally Open | 1 | |
|----|---------|---------------|---|---|--|

Other Parts Available

| | | | | | |
|----|--------------|---|---|---|--|
| 70 | R3234-11 | 3234-11 | Bolt - Hex Washer HD | 4 | |
| 71 | R104-4847-03 | 104-4847-03, 121-3655-03 | Strap - Seat Support | 2 | |
| 76 | R95-8896 | 95-8896 | Foam | 2 | |
| 78 | R32144-10 | 32140-81, 32144-10, 32144-3, 34-140-AMVD | Bolt - 1/4-20 x 3/4 Serrated Hx Wshr | 2 | |

All original equipment manufacturers names and part numbers are used for identification purposes only, and we are in no way implying that our products are original equipment parts. Prices subject to change without notice.



Replaces Toro Reelmaster 3100-D Parts

Traction Unit - Model 03201

Battery & Seat



| Item No | R&R Part No. | OEM Part No. | Description | Qty Req | Order Quantity |
|---------|--------------------|---|--|---------|----------------|
| 79 | R94-1410 | 94-1410 | Holder - Beverage Can | 1 | |
| 80 | R95-8817-01 | 95-8817, 95-8817-01 | Cover - Battery - Inner | 1 | |
| 81 | R300403 | 32144-4, 32144-63, 49-2040 | Bolt - Hex HD 1/4-20 x 1/2 | 2 | |
| 82 | R3234-1 | 321-11, 3234-1 | Bolt - Flanged Serrated Hex HD 3/8-16 x 3/4 | 3 | |
| 83 | R95-8854 | 95-8854 | Cable - Battery - Neg | 1 | |
| 85 | R233-70 | 233-70, 42619 | Knob - Star - Three Prong | 2 | |
| 86 | R93-7276 | 93-7276 | Decal - Danger | 1 | |
| 87 | R3269-27 | 3269-27 | Rivet - Snap | 4 | |
| 88 | R99-3602 | 95-8807, 95-8807-01, 99-3602 | Battery Cover Assy | 1 | |
| 89 | R32148-6 | 32148-6 | Insert - Nut | 2 | |
| 90 | R87-7620 | 87-7620 | Shield - Terminal | 1 | |
| 92 | R3296-29 | 1-804256, 3290-357, 3296-29, 915662P | Locknut - 5/16-18 ESNA | 1 | |

All original equipment manufacturers names and part numbers are used for identification purposes only, and we are in no way implying that our products are original equipment parts. Prices subject to change without notice.



Replaces Toro Reelmaster 3100-D Parts

Traction Unit - Model 03201

Battery & Seat



| Item No | R&R Part No. | OEM Part No. | Description | Qty Req | Order Quantity |
|---------|--------------|--|-----------------------------|---------|----------------|
| 93 | R453009 | 01-166-0400, 24-10-BD, 24-9-AD, 32-9650, 3256-2, 3256-23, 3256-3, 3256-67, 3290-217, 3556-3, 4-2390, 7-0152 | Washer - Flat 5/16 SAE | 1 | |
| 94 | R66-2490 | 66-2490 | Retainer - Battery | 1 | |
| 95 | R32144-15 | 32144-15 | Bolt - Hex Washer HD | 1 | |
| 96 | R32128-43 | 30-8990, 32128-43, 3290-357 | Nut - Flanged Whiz - 3/8-16 | 3 | |
| 97 | R95-8796-03 | 95-8796, 95-8796-03 | Support -Battery | 1 | |
| 98 | R3230-6 | 3230-6 | Bolt - Carraige | 1 | |
| 99 | R104-4833-03 | 104-4833-03 | Shield - Heat | 1 | |
| 100 | R99-3513 | 99-3513 | Tray - Battery | 1 | |

All original equipment manufacturers names and part numbers are used for identification purposes only, and we are in no way implying that our products are original equipment parts. Prices subject to change without notice.