

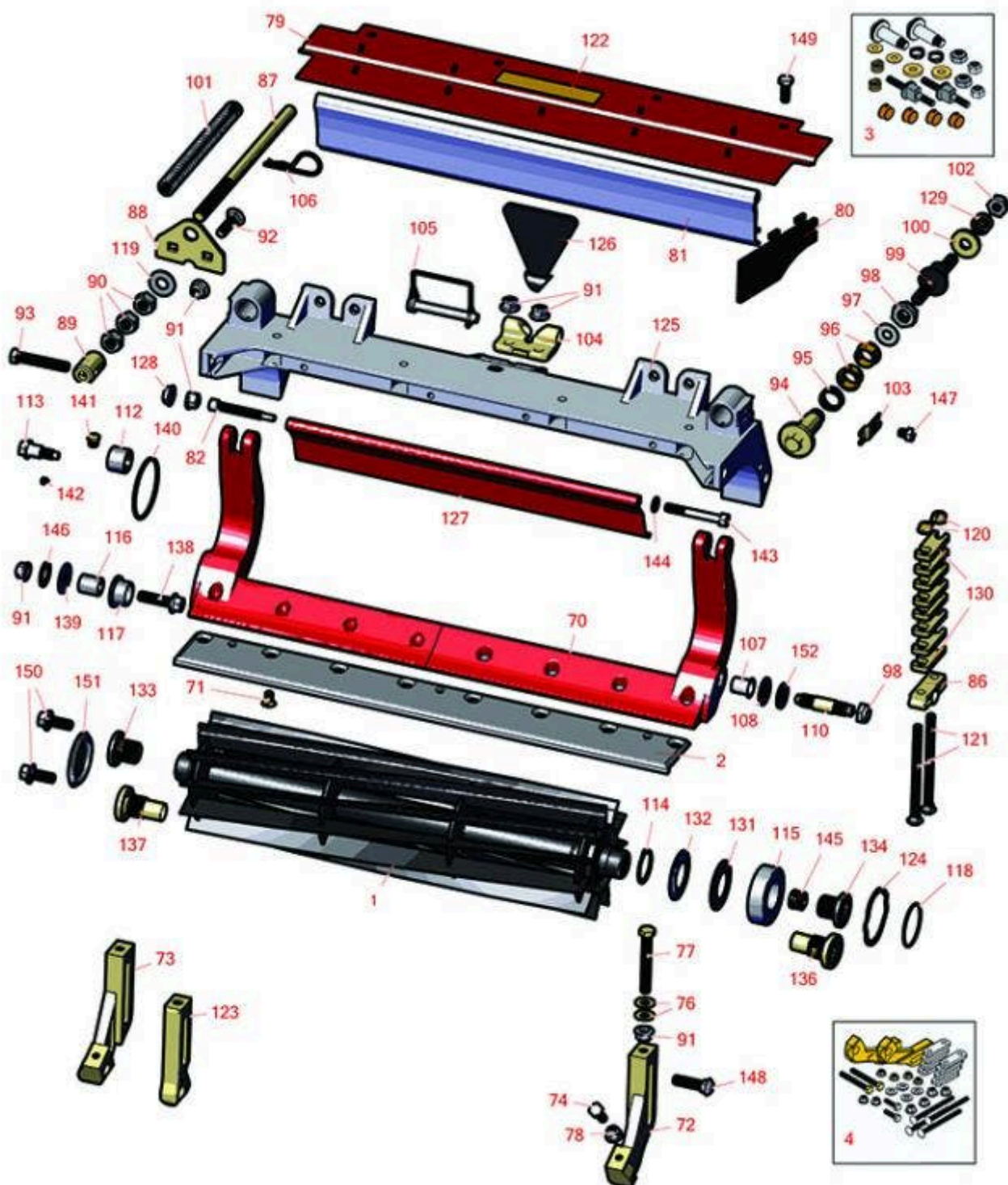


Replaces Toro Reelmaster 3550-D Parts

22in Cutting Unit - Model 03913, 03482, 03483, 03487,

03488 & 03489

Reel & Bedknife



All original equipment manufacturers names and part numbers are used for identification purposes only, and we are in no way implying that our products are original equipment parts. Prices subject to change without notice.



Replaces Toro Reelmaster 3550-D Parts

22in Cutting Unit - Model 03913, 03482, 03483, 03487,
03488 & 03489
Reel & Bedknife



Item No	R&R Part No.	OEM Part No.	Description	Qty Req	Order Quantity
---------	--------------	--------------	-------------	---------	----------------

R&R Reels, Lifetime Guaranteed

1	R132-7109	132-7109	Reel - 8 Blade Razor Series Radial w/Bearings and Seals 22x5	1	
---	------------------	----------	--------------------------------------------------------------	---	--

Detail Description: R&R Razor Reels are manufactured from a special high alloy steel and then hardened to RC48-51 to match the temper of our Razor bedknives and original equipment premium series bedknives. All R&R Reels are cylindrically ground on bearing surfaces, relief ground and precision computer balanced for extended bearing and reel life. R&R Products Reels are guaranteed against defects in material and workmanship for the life of the reel under normal use. You can expect up to double the life from Razor reels over standard reels.:

1	R131-3203	131-3203	Reel - 8 Blade Radial w/Bearings and Seals 22x5	1	
---	------------------	----------	-------------------------------------------------	---	--

Detail Description: R&R Reel blades are expertly crafted from premium high carbon-boron alloy steel, heat-treated to perfectly complement both R&R and OEM bedknives. Each reel undergoes precision cylindrical grinding on bearing surfaces, followed by relief grinding for optimal performance. Advanced computer balancing ensures extended reel and bearing life. Backed by our lifetime guarantee against defects in materials and craftsmanship under normal use, R&R Reels deliver unmatched durability and cutting precision you can trust.:

1	R137-8426	137-8426	Reel - 8 Blade Razor Radial (RR) w/Bearings and Seals 22x5	1	
---	------------------	----------	------------------------------------------------------------	---	--

Detail Description: R&R Razor Reels are manufactured from a special high alloy steel and then hardened to RC48-51 to match the temper of our Razor bedknives and original equipment premium series bedknives. All R&R Reels are cylindrically ground on bearing surfaces, relief ground and precision computer balanced for extended bearing and reel life. R&R Products Reels are guaranteed against defects in material and workmanship for the life of the reel under normal use. You can expect up to double the life from Razor reels over standard reels.:

1	R131-3204	131-3204	Reel - 11 Blade Radial (RR) w/Bearings and Seals 22x5	1	
---	------------------	----------	-------------------------------------------------------	---	--

Detail Description: R&R Reel blades are expertly crafted from premium high carbon-boron alloy steel, heat-treated to perfectly complement both R&R and OEM bedknives. Each reel undergoes precision cylindrical grinding on bearing surfaces, followed by relief grinding for optimal performance. Advanced computer balancing ensures extended reel and bearing life. Backed by our lifetime guarantee against defects in materials and craftsmanship under normal use, R&R Reels deliver unmatched durability and cutting precision you can trust.:

1	R137-8427	137-8427	Reel - 11 Blade Razor Series Forward Swept Low Drag w/Bearings and Seals 22x5	1	
---	------------------	----------	-------------------------------------------------------------------------------	---	--

All original equipment manufacturers names and part numbers are used for identification purposes only, and we are in no way implying that our products are original equipment parts. Prices subject to change without notice.



Replaces Toro Reelmaster 3550-D Parts

22in Cutting Unit - Model 03913, 03482, 03483, 03487,
03488 & 03489
Reel & Bedknife



Item No	R&R Part No.	OEM Part No.	Description	Qty Req	Order Quantity
---------	--------------	--------------	-------------	---------	----------------

Detail Description: R&R Razor Reels are manufactured from a special high alloy steel and then hardened to RC48-51 to match the temper of our Razor bedknives and original equipment premium series bedknives. All R&R Reels are cylindrically ground on bearing surfaces, relief ground and precision computer balanced for extended bearing and reel life. R&R Products Reels are guaranteed against defects in material and workmanship for the life of the reel under normal use. You can expect up to double the life from Razor reels over standard reels.:

1	R132-7112	132-7112	Reel - 11 Blade Razor Series Forward Swept w/Bearings and Seals 22x5	1	
---	------------------	----------	----------------------------------------------------------------------------	---	--

Detail Description: R&R Razor Reels are manufactured from a special high alloy steel and then hardened to RC48-51 to match the temper of our Razor bedknives and original equipment premium series bedknives. All R&R Reels are cylindrically ground on bearing surfaces, relief ground and precision computer balanced for extended bearing and reel life. R&R Products Reels are guaranteed against defects in material and workmanship for the life of the reel under normal use. You can expect up to double the life from Razor reels over standard reels.:

1	R137-8429	137-8429	Reel - 11 Blade Razor Series Radial (RR) w/Bearings and Seals 22x5	1	
---	------------------	----------	--------------------------------------------------------------------------	---	--

Detail Description: R&R Razor Reels are manufactured from a special high alloy steel and then hardened to RC48-51 to match the temper of our Razor bedknives and original equipment premium series bedknives. All R&R Reels are cylindrically ground on bearing surfaces, relief ground and precision computer balanced for extended bearing and reel life. R&R Products Reels are guaranteed against defects in material and workmanship for the life of the reel under normal use. You can expect up to double the life from Razor reels over standard reels.:

R&R Bedknives, Lifetime Guaranteed

2	R110-4074	110-4074	Bedknife - High Cut	1	
---	------------------	----------	---------------------	---	--

Detail Description: R&R Bedknives are manufactured from high carbon-boron alloy steel and then hardened to RC46-49 to match the temper of our reel blades and original equipment reels. Bedknives are surface ground on the top and front edge and straightened three times before being packaged with oil for rust prevention. All R&R Bedknives now have an increased front edge grind for added life. All R&R Bedknives are guaranteed against defects in material and workmanship under normal use for the life of the part.:

2	R108-9096	108-9096	Bedknife - Standard	1	
---	------------------	----------	---------------------	---	--

All original equipment manufacturers names and part numbers are used for identification purposes only, and we are in no way implying that our products are original equipment parts. Prices subject to change without notice.



Replaces Toro Reelmaster 3550-D Parts

22in Cutting Unit - Model 03913, 03482, 03483, 03487,
03488 & 03489
Reel & Bedknife



Item No	R&R Part No.	OEM Part No.	Description	Qty Req	Order Quantity
---------	--------------	--------------	-------------	---------	----------------

Detail Description: R&R Bedknives are manufactured from high carbon-boron alloy steel and then hardened to RC46-49 to match the temper of our reel blades and original equipment reels. Bedknives are surface ground on the top and front edge and straightened three times before being packaged with oil for rust prevention. All R&R Bedknives now have an increased front edge grind for added life. All R&R Bedknives are guaranteed against defects in material and workmanship under normal use for the life of the part.:

2	R110-4084	110-4084	Bedknife - Low Cut	1	
---	------------------	----------	--------------------	---	--

Detail Description: R&R Bedknives are manufactured from high carbon-boron alloy steel and then hardened to RC46-49 to match the temper of our reel blades and original equipment reels. Bedknives are surface ground on the top and front edge and straightened three times before being packaged with oil for rust prevention. All R&R Bedknives now have an increased front edge grind for added life. All R&R Bedknives are guaranteed against defects in material and workmanship under normal use for the life of the part.:

R&R Razor Tool Steel Bedknives, Lifetime Guaranteed

2	R108-9095	108-9095, 137-0833	Bedknife - Razor Tool Steel - 22 High Cut	1	
---	------------------	-----------------------	----------------------------------------------	---	--

Detail Description: R&R Razor bedknives are manufactured from premium alloy tool steel steel and then hardened to RC48-51 to match the temper of our Razor reel blades and original equipment premium series reels. Bedknives are surface ground on the top and front edge and specially packaged for rust prevention. All R&R Bedknives now have an increased front edge grind for added life. All R&R Bedknives are guaranteed against defects in material and workmanship under normal use for the life of the part. You can expect up to double the life over standard bedknives.:

2	R137-0832	125-2771, 127-7132, 137-0832	Bedknife - Razor Tool Steel - 3/8 x 22 Lowcut	1	
---	------------------	------------------------------------	--------------------------------------------------	---	--

2	R119-4280	119-4280	Bedknife - Razor Tool Steel - 22 x 3/8 Extended	1	
---	------------------	----------	----------------------------------------------------	---	--

Detail Description: R&R Razor bedknives are manufactured from premium alloy tool steel steel and then hardened to RC48-51 to match the temper of our Razor reel blades and original equipment premium series reels. Bedknives are surface ground on the top and front edge and specially packaged for rust prevention. All R&R Bedknives now have an increased front edge grind for added life. All R&R Bedknives are guaranteed against defects in material and workmanship under normal use for the life of the part. You can expect up to double the life over standard bedknives.:

Overhaul Kits

All original equipment manufacturers names and part numbers are used for identification purposes only, and we are in no way implying that our products are original equipment parts. Prices subject to change without notice.



Replaces Toro Reelmaster 3550-D Parts

22in Cutting Unit - Model 03913, 03482, 03483, 03487,
03488 & 03489
Reel & Bedknife



Item No	R&R Part No.	OEM Part No.	Description	Qty Req	Order Quantity
3	R120-7230	120-7230	Overhaul Kit - Fits DPA Units	0	
<i>Detail Description: Incl 2 ea.: R108-0015, R115-7039, R119-4155, R120-5116, R120-5118, R120-5120, R3296-33, R3296-48 & 4 ea: R106-5344:</i>					
4	R110-9600	110-9600	High HOC Kit	0	
<i>Detail Description: Includes 1 ea.: R120-0404, R120-0405 & 2 ea: R112-7451, R322-16, R445722 & 4 ea.: R106-9758, R104-8300, R453011, R104-8301 & 8 ea: R106-3925:</i>					
Other Parts Available					
70	R105-8095-01	105-8095-01	Bed Bar - Fits OEM Units Only	1	
70	R131-3220-03	131-3220-03	Bedbar-Aggressive - 5 Inch Reel	1	
71	R119-4151	119-4151	Screw - Bedknife 5/16-18 x 17/32	8	
72	R120-0404	120-0404	Bracket- High HOC - LH	1	
<i>Detail Description: Fits 2011 & Newer:</i>					
73	R120-0405	120-0405	Bracket - High HOC - RH	1	
<i>Detail Description: Fits 2011 & Newer:</i>					
74	R322-16	322-16, Apr-00	Bolt - Hex HD 5/16-18 x 1-1/8	2	

All original equipment manufacturers names and part numbers are used for identification purposes only, and we are in no way implying that our products are original equipment parts. Prices subject to change without notice.



Replaces Toro Reelmaster 3550-D Parts

22in Cutting Unit - Model 03913, 03482, 03483, 03487,

03488 & 03489

Reel & Bedknife



Item No	R&R Part No.	OEM Part No.	Description	Qty Req	Order Quantity
76	R453011	01-166-0100, 01-166-0120, 01-166-0270, 01-166-0500, 01-166-0600, 01-166-0620, 132-4593, 2356-3, 237-12, 24-10-AD, 24-11-AD, 24-11-BD, 24-12-AD, 24-12-BD, 30-9310, 32-8190, 3256-24, 3256-3, 3256-36, 3256-4, 453011, 47-9950, 48-9220, 513458, 7-0052	Washer - Flat 3/8 SAE Y/Zinc	4	
77	R112-7451	100-9429, 112-7451	Bolt - Hex Tap 3/8-16 x 2-3/4	2	
78	R445722	30-8980, 32128-2, 32128-20, 32128-20	Nut - Serrated Washer	2	
79	R107-2996	107-2996	Grass Shield - Front	1	
80	R110-1706	110-1706	Deflector	5	
81	R125-2098	125-2098	Grass Shield - Rear 22" Unit	1	
82	R107-7773	107-7773	Bolt - Soc HD Cap 5/16-18 x 2-1/2	1	
86	R106-3924	106-3924	Bracket - Rear Roller	2	
87	R107-2970	107-2970	Rod - Spring	1	

All original equipment manufacturers names and part numbers are used for identification purposes only, and we are in no way implying that our products are original equipment parts. Prices subject to change without notice.



Replaces Toro Reelmaster 3550-D Parts

22in Cutting Unit - Model 03913, 03482, 03483, 03487,
03488 & 03489
Reel & Bedknife



Item No	R&R Part No.	OEM Part No.	Description	Qty Req	Order Quantity
88	R110-4069	110-4069	Bracket	1	
89	R99-8662	99-8662	Tube - Spring	1	
90	R443818	01-191-0813, 3218-18, 3218-5	Nut - 1/2-13 Hex Jam Zinc	3	
91	R104-8301	104-8301, 104-9301, 109-6658, 133-7570	Locknut - 3/8-16 Nylon Flanged	2	
92	R3231-25	01-173-0610, 30-9970, 3231-25, 3231-3, 900064P	Bolt - Carriage 3/8-16 x 1-1/4	4	
93	R104-3396	104-3396	Bolt - Hex HD 3/8-16 x 2-1/4	1	
94	R120-5118	120-5118	Shaft - Adjuster	2	
<i>Detail Description: 2012 & Newer:</i>					
95	R120-5116	120-5116	Washer - Wave	2	
96	R106-5344	106-5344	Bushing - Flanged and Keyed	4	
97	R108-0015	108-0015	Washer - Flat	2	
98	R3296-33	3296-33	Locknut - 5/8-18 ESNA Jam	4	
99	R115-7039	115-7039	Screw - Adjuster - Bedbar	2	
99	R137-6130	137-6130	Screw - Adjuster - Hardened - Bedbar	2	
100	R119-4155	119-4155	Washer - Hardened	2	
101	R112-1725	112-1725	Spring - Compression	1	

All original equipment manufacturers names and part numbers are used for identification purposes only, and we are in no way implying that our products are original equipment parts. Prices subject to change without notice.



Replaces Toro Reelmaster 3550-D Parts

22in Cutting Unit - Model 03913, 03482, 03483, 03487,
03488 & 03489
Reel & Bedknife



Item No	R&R Part No.	OEM Part No.	Description	Qty Req	Order Quantity
102	R3296-48	119-4039, 32146-7, 3296-34, 3296-48	Locknut - 7/16-14 ESNA	2	
103	R99-2097	99-2097	Detent - Bed Bar Adjuster	2	
104	R110-4058	110-4058	Bracket - Chain	1	
105	R107-7400	107-7400	Pin - Lynch	1	
106	R92-2762	92-2762	Pin - Snap	1	
107	R56-9520	56-9520	Bushing - Nyliner	2	
108	R61-1950	61-1950	Washer - Nylon - Bed Bar	4	
110	R106-9623	106-9623	Bolt - Bedbar	2	
112	R106-9618	106-9618	Bushing - Rubber	2	
113	R107-2979	107-2979	Bolt - Shoulder	4	
114	R92-2601	92-2601	Snap Ring	2	
115	R115-3296	115-3296	Bearing	2	
115	R140-5510	140-5510	Bearing - Sealed Stainless	0	
116	R108-4279	108-4279	Spacer - Frame	2	
117	R93-2877	93-2877	Bushing - Flanged	2	
118	R237-68	237-68	O-Ring	2	
119	R87-7270-01	87-7270	Washer - Flat 1/2	1	
120	R104-8300	104-8300, 104-8300 , 119-4041	Locknut - 5/16-18 Flanged Y/Zinc	4	
121	R3230-30	3230-30	Bolt - Carriage 5/16x4 1/2	4	

All original equipment manufacturers names and part numbers are used for identification purposes only, and we are in no way implying that our products are original equipment parts. Prices subject to change without notice.



Replaces Toro Reelmaster 3550-D Parts

22in Cutting Unit - Model 03913, 03482, 03483, 03487,
03488 & 03489
Reel & Bedknife



Item No	R&R Part No.	OEM Part No.	Description	Qty Req	Order Quantity
122	R93-6688	93-6688	Decal - Warning	1	
122	R137-9706	137-9706	Decal- Warning	1	
123	R125-2796	125-2796	Bracket- Front HOC	2	
<i>Detail Description: Fits 2013 & Newer:</i>					
124	R105-5700	105-5700, 115-5258	Wave Washer - Bearing	1	
125	R107-2951	107-2951	Frame	1	
126	R110-4088-03	110-4088-03, 119-8010-03	Kickstand	1	
127	R107-7777-01	107-7777-01	Grass Shield Assy - Rear	1	
128	R32128-43	30-8990, 32128-43, 3290-357	Nut - Flanged Whiz - 3/8-16	5	
128	R3296-39	32127-25, 32128-36, 3290-357, 3296-17, 3296-22, 3296-39, 915663P, 99-7443	Locknut - 3/8-16 Nylon	5	
129	R120-5120	120-5120	Spring - Compression	2	
130	R119-0626	119-0626	Shim - Roller - 1/4 in - Slotted	8	
131	R115-3299	115-3299	Seal- Flocked	2	
132	R127-4284	127-4284	Washer - Special	2	
132	R121-6953	121-6953	Washer - Rubber - Special	2	
133	R130-0063	130-0063	Insert-Threaded, 5 Inch (RH)	1	

All original equipment manufacturers names and part numbers are used for identification purposes only, and we are in no way implying that our products are original equipment parts. Prices subject to change without notice.



Replaces Toro Reelmaster 3550-D Parts

22in Cutting Unit - Model 03913, 03482, 03483, 03487,
03488 & 03489
Reel & Bedknife



Item No	R&R Part No.	OEM Part No.	Description	Qty Req	Order Quantity
<i>Tech Note: Ser# 315000001-315999999:</i>					
134	R130-0064	130-0064	Insert-Threaded, 5 Inch (LH)	1	
<i>Tech Note: Ser# 315000001-315999999:</i>					
136	R125-2772	125-2772	Insert Assy - LH	1	
<i>Tech Note: Ser# 313000001-313999999:</i>					
137	R125-2773	125-2773	Insert Assy - RH	1	
<i>Tech Note: Ser# 313000001-313999999:</i>					
138	R3234-19	3234-19	Bolt - Hex Washer 3/8-16x1-3/4	2	
139	R130-8094	130-8094	Washer	2	
140	R117-8177	117-8177	O-Ring	2	
141	R170714	302-34, 302-39, 62-3520	Fitting - Pressure Relief	2	
142	R3245-35	3245-35	Screw - Set 1/4-28 x 1/4	2	
143	R322-14	01-150-0830, 01-178-0524, 30-8900, 322-14	Bolt - Hex HD 5/16-18 x 3 GR5	1	
144	R3256-74	3256-74	Washer - Flat	1	
145	R125-5609	125-5609	Plug - Plastic	1	
146	R67-9410	67-9410	Washer - Clevis Pin	1	
147	R114-9396	114-9396, 119-4067	Bolt - Hex HD 5/16-18 x 3/8	2	
148	R3231-4	01-157-0440, 01-173-0612, 3231-4	Bolt - Carriage 3/8-16 x 1-1/2	2	

All original equipment manufacturers names and part numbers are used for identification purposes only, and we are in no way implying that our products are original equipment parts. Prices subject to change without notice.



Replaces Toro Reelmaster 3550-D Parts

22in Cutting Unit - Model 03913, 03482, 03483, 03487,

03488 & 03489

Reel & Bedknife



Item No	R&R Part No.	OEM Part No.	Description	Qty Req	Order Quantity
149	R3234-7	3234-7	Bolt - Hex Washer HD 5/16-18 x 5/8	4	
150	R3234-11	3234-11	Bolt - Hex Washer HD	2	
151	R150485	2410-30	Cap - Protective Bearing Housing	1	
152	R3256-26	01-166-0540, 01-166-0820, 17-2530, 24-13-BD, 30-8570, 3256-26, 356206, 48-9390	Washer - 1/2 in	2	
152	R453017	01-166-0050, 01-166-0240, 01-166-0800, 24-13-AD, 24-14-AD, 32-8110, 3256-26, 3256-6, 453017, 69-8980, 87-7270	Washer - Flat 1/2	2	

All original equipment manufacturers names and part numbers are used for identification purposes only, and we are in no way implying that our products are original equipment parts. Prices subject to change without notice.