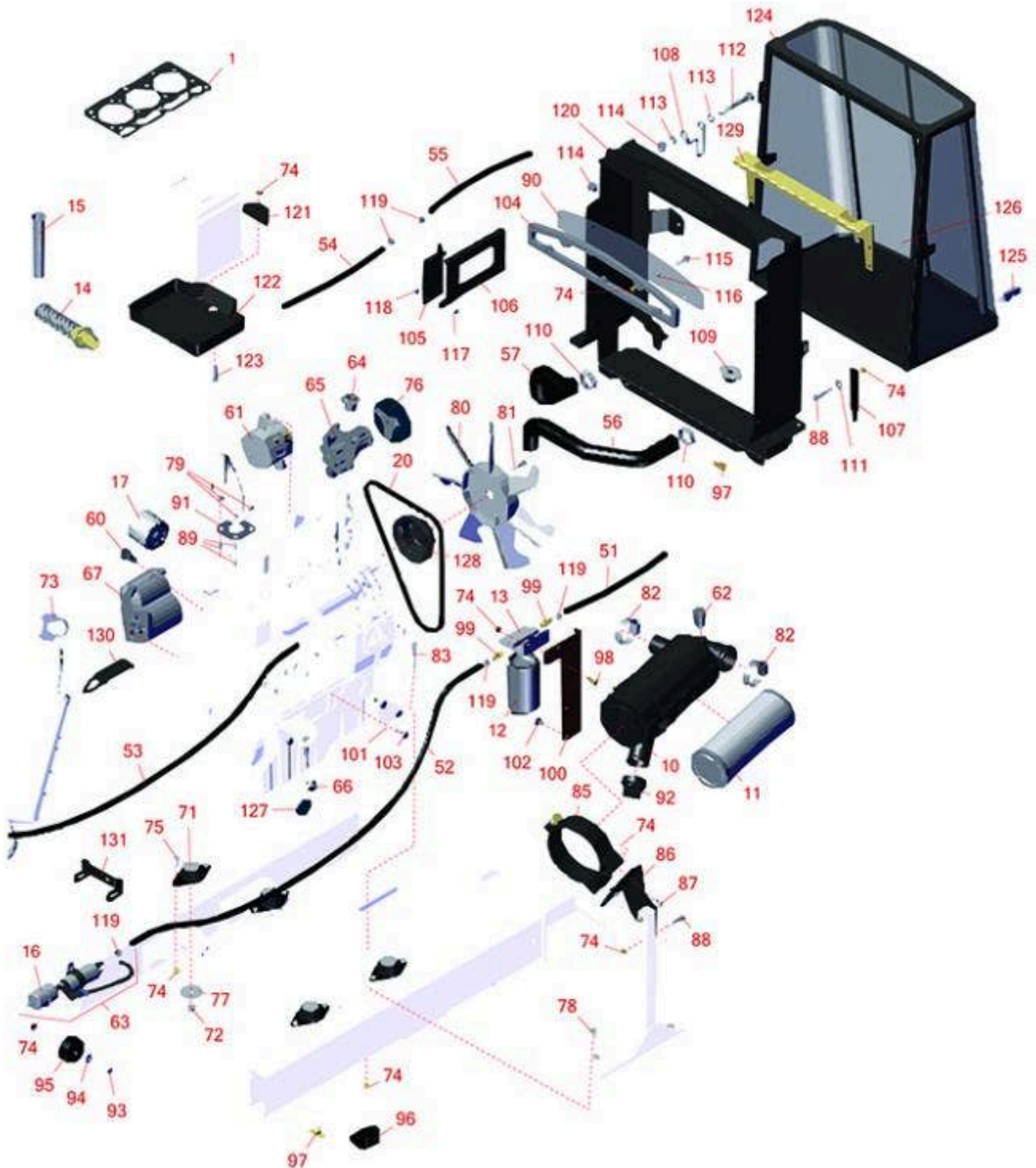




Replaces Toro Reelmaster 5010-H Parts

Traction Unit

Engine, Intake, Radiator & Exhaust



All original equipment manufacturers names and part numbers are used for identification purposes only, and we are in no way implying that our products are original equipment parts. Prices subject to change without notice.



Replaces Toro Reelmaster 5010-H Parts

Traction Unit

Engine, Intake, Radiator & Exhaust



Item No	R&R Part No.	OEM Part No.	Description	Qty Req	Order Quantity
Other Parts Available					
1	R108-6573	108-6573	Gasket - Cylinder Head	1	
71	R120-6274	120-6274	Mount - Motor - 215 lb Rating	4	
72	R104-8301	104-8301, 104-9301, 109-6658, 133-7570	Locknut - 3/8-16 Nylon Flanged	4	
73	R348856	2112-9, 2412-42, 348856	Clamp - Muffler - 1-1/2	1	
74	R104-8300	104-8300, 104-8300, 119-4041	Locknut - 5/16-18 Flanged Y/Zinc	38	
75	R322-4	322-4, 3290-115, 908018P	Bolt - Hex HD 5/16-18 x 7/8	8	
76	RX1624974280	105-3745, X1624974280	Kubota Fan Drive Pulley	1	
77	R87-5100	87-5100	Washer - Snubbing	4	
78	R3234-29	3234-17, 3234-29	Bolt - 5/16-18x1 Serr Hex	5	
79	R104-2612	104-2612	Nut - 8mm x 1.25 Fl Lock	4	
80	RX1629274110		Kubota Fan	1	
80	RX1628574110	110-0966	Kubota Fan - Suction 370mm	1	
81	RX0175450620	108-2873, 33113-025, 43-2600, 48-7640, 99-8363	Kubota Bolt - Flange	4	

All original equipment manufacturers names and part numbers are used for identification purposes only, and we are in no way implying that our products are original equipment parts. Prices subject to change without notice.



Replaces Toro Reelmaster 5010-H Parts

Traction Unit

Engine, Intake, Radiator & Exhaust



Item No	R&R Part No.	OEM Part No.	Description	Qty Req	Order Quantity
82	R2412-130	2412-130, 2412-92	Clamp - Hose 1 5/16-2 1/2	4	
83	R101526	01-150-0970, 01-178-0620, 101526, 20-53-AGD, 321-11, 3224-8, 323-11, 323-12, 323-31, 323-4, 323-47	Bolt - Hex HD 3/8-16 x 2-1/2 GR5	4	
85	R100-4825	100-4825	Band-Mounting,-Air Filter	1	
86	R110-8980-03	110-8980-03	Bracket - Mount	1	
87	R3234-14	3234-14, 3234-23	Bolt - Hex Serrated Washer HD	2	
88	R322-10	20-30-AD, 24-7180, 322-10, 322-10 , 3223-6, 513347	Bolt - Hex HD 5/16-18 x 2	6	
89	R98-7769	98-7769	Stud	4	
90	R108-1843-03	108-1843-03	Screen-Intake, Air	1	
91	RX1526312370	98-9611, 99-8343	Kubota Gasket - Muffler	1	
92	R87-9400	87-9400	Valve - Vacuator	1	
93	R400190	01-150-0720, 01-178-0510, 30-8680, 322-6, 513343	Bolt - Hex HD 5/16-18 x 1-1/4 GR5	4	

All original equipment manufacturers names and part numbers are used for identification purposes only, and we are in no way implying that our products are original equipment parts. Prices subject to change without notice.



Replaces Toro Reelmaster 5010-H Parts

Traction Unit

Engine, Intake, Radiator & Exhaust



Item No	R&R Part No.	OEM Part No.	Description	Qty Req	Order Quantity
94	R453011	01-166-0100, 01-166-0120, 01-166-0270, 01-166-0500, 01-166-0600, 01-166-0620, 132-4593, 2356-3, 237-12, 24-10-AD, 24-11-AD, 24-11-BD, 24-12-AD, 24-12-BD, 30-9310, 32-8190, 3256-24, 3256-3, 3256-36, 3256-4, 453011, 47-9950, 48-9220, 513458, 7-0052	Washer - Flat 3/8 SAE Y/Zinc	4	
95	R108-1605	108-1605	Bumper-Recess	2	
96	R107-4543	107-4543	Clamp	2	
97	R304-46	304-46, 304-60	Draincock	1	
98	R3230-22	3230-22, R3230-22	Bolt - Carriage 5/16-18 x 1	2	
99	R353-783	353-783	Fitting - Straight	2	
100	R110-8968-01	110-8968-01	Mount - Water Separator	1	
102	R32144-14	32104-32, 32104-49, 32144-14	Bolt - Hex Washer 5/16-18 x 5/8	4	
103	R43-0090	43-0090, 95-8812	Bolt - 10mm x 1.25 x 25 Hex HD	12	

All original equipment manufacturers names and part numbers are used for identification purposes only, and we are in no way implying that our products are original equipment parts. Prices subject to change without notice.



Replaces Toro Reelmaster 5010-H Parts

Traction Unit

Engine, Intake, Radiator & Exhaust



Item No	R&R Part No.	OEM Part No.	Description	Qty Req	Order Quantity
104	R110-5324	110-5324	Seal-Foam	1	
105	R108-1665-03	108-1665-03	Bracket-Reservior	1	
106	R108-1666-03	108-1666-03	Bracket-Reservoir	1	
107	R104-5460-03	104-5460-03	Plate-Mount, Oil Cooler	2	
108	R104-5429	104-5429	Clamp - Form, Wire	2	
109	R93-5957	93-5957	Cap - Radiator	1	
110	R2412-34	2412-34, 31-0120	Clamp - Hose .75-1.5	4	
111	R453009	01-166-0400, 24-10-BD, 24-9-AD, 32-9650, 3256-2, 3256-23, 3256-3, 3256-67, 3290-217, 3556-3, 4-2390, 7-0152	Washer - Flat 5/16 SAE	8	
112	R325-17	01-150-0640, 01-150-0850, 01-178-0832, 01-178-0836, 20-97-AGD, 325-17, 325-18, 48-9260	Bolt - Hex Head	2	
113	R455012	3256-26, 41-8440	Washer - Flat 1/2 x 3/4	4	
114	R32128-49	32128-49	Nut - 1/2-13 Hex Flange	4	
115	R3234-36	3234-36	Bolt - 5/16-18 x 1 1/4 Hx HD Flange	5	
116	R1-603903	1-603903	Spacer	5	

All original equipment manufacturers names and part numbers are used for identification purposes only, and we are in no way implying that our products are original equipment parts. Prices subject to change without notice.



Replaces Toro Reelmaster 5010-H Parts

Traction Unit

Engine, Intake, Radiator & Exhaust



Item No	R&R Part No.	OEM Part No.	Description	Qty Req	Order Quantity
117	R3234-13	3234-13, 960151P	Bolt - Flanged Hex 1/4-20	1	
118	R301504	2296-42, 301504, 32127-24, 32128-33, 32146-17, 3296-16, 3296-42, 3296-42 , 915661P	Locknut - ESNA 1/4-20	3	
119	R92-2379	92-2379	Clamp - Hose	3	
120	R108-1617-03	108-1617-03	Frame-Radiator	1	
121	R66-2490	66-2490	Retainer - Battery	1	
122	R99-3513	99-3513	Tray - Battery	1	
123	R3230-6	3230-6	Bolt - Carraige	1	
124	R110-0952-03	110-0952-03	Screen Assy	1	
125	R115-1554	105-3912, 115-1554, 115-1554-01	Latch-Draw	1	
126	R3290-382	3269-15, 3290-382	Rivet - 5/32 x 1/2 Pop Rivet	2	
127	R99-3514	99-3514	Cover	1	
128	R130-1567	130-1567	Pulley - Fan	1	
129	R107-2043-03	107-2043-03	Bracket-Oil Cooler	1	
130	R110-8999	110-8999	Muffler Guard	1	
131	R108-1801-01	108-1801-01	Bracket-Support - Pump	1	

Filters

All original equipment manufacturers names and part numbers are used for identification purposes only, and we are in no way implying that our products are original equipment parts. Prices subject to change without notice.



Replaces Toro Reelmaster 5010-H Parts

Traction Unit

Engine, Intake, Radiator & Exhaust



Item No	R&R Part No.	OEM Part No.	Description	Qty Req	Order Quantity
10	R106-5277	106-5277	Air Cleaner Assy	1	
11	R5000919	108-3810, 1083810, 98-9763, 989763	Baldwin Air Filter Element	1	
11	RRF10143	108-3810, 1083810, 98-9763, 989763	SilverGuard Air Filter Element	1	
12	R110-9049	110-9049	Donaldson Fuel Filter - Spin On	1	
12	RRF10515	105-8045, 108-3854, 110-9049	SilverGuard Fuel Filter	1	
13	R110-9044	110-9044	Donaldson Water/Fuel Separator Assy	1	
14	R105-0131	105-0131	Strainer-Tank - Oil	1	
15	R61-2790	61-2790	Screen - Filler - Hyd Oil	1	
16	R112-7836	112-7836, RR ONLY	Baldwin Fuel Filter - in Line	1	
16	RRF10534	112-7836, RR ONLY, RRONLY	SilverGuard Fuel Filter - Inline	1	
16	R825619	108-3832, 94-2690, 95-2926, 99-9404	Filter - Fuel	1	
17	R42-9030	104-5167, 108-3841, 127-0511, 42-9030, 67-4330, 98-9651	Baldwin Oil Filter - Engine	1	

Belts

All original equipment manufacturers names and part numbers are used for identification purposes only, and we are in no way implying that our products are original equipment parts. Prices subject to change without notice.



Replaces Toro Reelmaster 5010-H Parts

Traction Unit

Engine, Intake, Radiator & Exhaust



Item No	R&R Part No.	OEM Part No.	Description	Qty Req	Order Quantity
20	RX1620697010	104-3494	V -Belt - Fan - Kubota	1	

Hoses

51	R109-0309	109-0309	Hose-Fuel	1	
52	R110-3259	110-3259	Hose-Fuel	1	
53	R117-0298	117-0298, 125-8808	Hose-Fuel	1	
54	R110-3257	110-3257, 63-7630	Hose-Fuel	1	
55	R110-4104	110-4104, 27-5340	Hose-Fuel	1	
56	R108-1696	108-1696	Hose - Formed	1	
57	R108-1697	108-1697	Hose - Formed	1	

Gauges and Controls

60	R100-4918	100-4818, 100-4918	Diode	1	
61	R131-6557	131-6557	Alternator Assy	1	
62	R93-9164	93-9164	Indicator - Service - Air Filter	1	
63	R110-8806	110-8806	Fuel Pump and Filter Assy	1	
64	RX1943473014	105-2881, 98-7438, 98-7778, 98-9715	Kubota Thermostat Assy	1	
65	R107-9089	104-4885, 107-9089, 108-4426	Water Pump Assy	1	
66	RX1545139012	98-91416, 98-9416	Kubota Sensor - Oil Pressure	0	

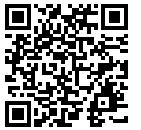
All original equipment manufacturers names and part numbers are used for identification purposes only, and we are in no way implying that our products are original equipment parts. Prices subject to change without notice.



Replaces Toro Reelmaster 5010-H Parts

Traction Unit

Engine, Intake, Radiator & Exhaust



Item No	R&R Part No.	OEM Part No.	Description	Qty Req	Order Quantity
67	RX3756063010	98-9705	Kubota Starter	1	
67	R131-6561	131-6561	Starter	1	

All original equipment manufacturers names and part numbers are used for identification purposes only, and we are in no way implying that our products are original equipment parts. Prices subject to change without notice.