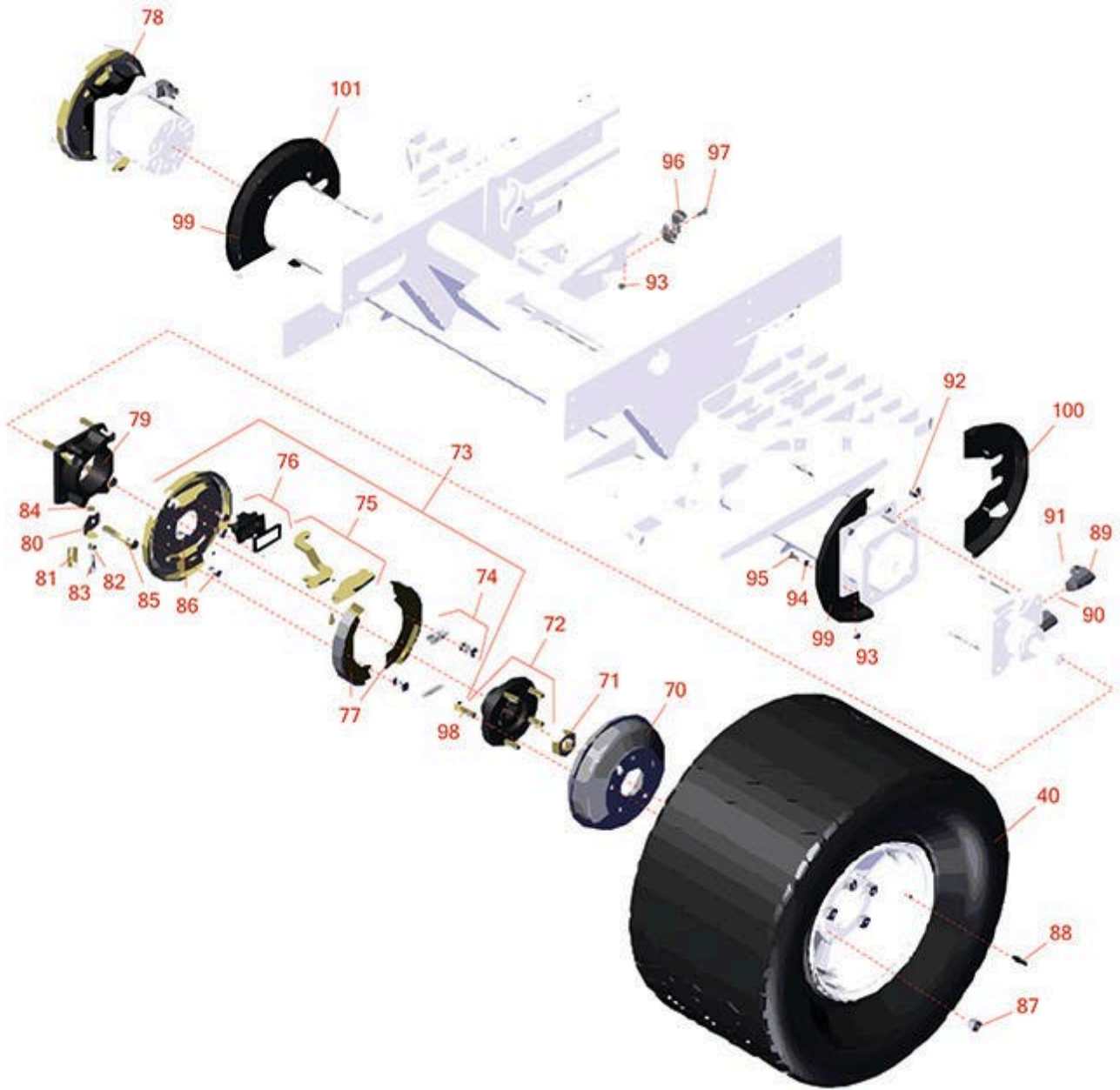




Replaces Toro Reelmaster 5010-H Parts

Traction Unit

Front Wheel, Brakes & Hydraulics



All original equipment manufacturers names and part numbers are used for identification purposes only, and we are in no way implying that our products are original equipment parts. Prices subject to change without notice.



Replaces Toro Reelmaster 5010-H Parts

Traction Unit

Front Wheel, Brakes & Hydraulics



| Item No | R&R Part No. | OEM Part No. | Description | Qty Req | Order Quantity |
|------------------------------|----------------------|--|--|---------|----------------|
| Tires | | | | | |
| 40 | RTK2612-4LG-I | 117-5196 | Tire - 26.5x14.00-12 Nhs (4 Ply) K507 Turf | 2 | |
| 40 | RCT529386 | | Tire - 26.5x14.00-12 Nhs (4 Ply) Carlisle Ultra Trac | 2 | |
| Other Parts Available | | | | | |
| 70 | R114-8864 | 114-8864 | Drum - Brake | 2 | |
| 71 | R117-3290 | 117-3290 | Nut - Hex | 2 | |
| 72 | R121-5631 | 121-5621, 121-5631 | Hub Assy | 2 | |
| 73 | R120-6261 | 120-6261 | Brake Assy - LH | 1 | |
| 74 | R108-6983 | 108-6983 | Brake Hardware Kit | 2 | |
| 75 | R110-8910 | 110-8910 | Actuator Kit - LH | 1 | |
| 75 | R110-8884 | 110-8884 | Actuator Kit - RH | 1 | |
| 76 | R110-8885 | 110-8885 | Dust Boot Kit - Brake | 2 | |
| 77 | R108-6981 | 108-6981 | Brake Shoe Kit - Set/2 | 2 | |
| 78 | R120-6260 | 120-6260 | Brake Assy - RH | 1 | |
| 79 | R120-6253-03 | 120-6253-03 | Adapter-Brake | 2 | |
| 80 | R120-6267 | 120-6267 | Clip - Spring - LH | 1 | |
| 80 | R120-6266 | 120-6266 | Clip - Spring - RH | 1 | |
| 81 | R87-4020 | 87-4020 | Spring - Extension | 2 | |
| 82 | RP457-2 | 01-191-0518, 22-12-AJK, 3218-2, 513299, P457-2 | Nut - Jam 5/16-18 Zinc | 2 | |

All original equipment manufacturers names and part numbers are used for identification purposes only, and we are in no way implying that our products are original equipment parts. Prices subject to change without notice.



Replaces Toro Reelmaster 5010-H Parts

Traction Unit

Front Wheel, Brakes & Hydraulics



| Item No | R&R Part No. | OEM Part No. | Description | Qty Req | Order Quantity |
|---------|------------------|--|----------------------------------|---------|----------------|
| 83 | R322-7 | 01-150-0750, 01-150-0760, 01-178-0512, 20-28-AD, 20-28-AGD, 322-7, 3223-4 | Bolt - Hex HD 5/16-18 x 1-1/2 | 2 | |
| 84 | R104-8300 | 104-8300, 104-8300 , 119-4041 | Locknut - 5/16-18 Flanged Y/Zinc | 2 | |
| 85 | R325-12 | 01-150-0320, 01-150-0880, 01-178-0824, 20-93-AD, 325-12 | Bolt - Hx HD | 8 | |
| 86 | R400258 | 01-150-0800, 01-178-0600, 01-178-0606, 20-45-AD, 31-0200, 31-9910, 3224-1, 323-4, 400258 | Bolt - Hex HD 3/8-16 x 3/4 | 8 | |
| 87 | R242-50 | 242-50 | Nut - 1/2-20 Wheel | 10 | |
| 88 | R232-27 | 232-27, 232-31 | Stem - Valve w/ Cap | 2 | |
| 89 | R340-17 | 340-17 | No 10 Male Orfs x No 10 Male Orb | 4 | |
| 90 | R237-80 | 237-80, 327-80 | O-Ring | 4 | |
| 91 | R237-65 | 237-65, 237.65 | O-Ring | 4 | |
| 92 | RF5003 | 32127-29, 32131-5, 32132-5, 3296-23 | Locknut - ESNA 1/2-13 | 8 | |

All original equipment manufacturers names and part numbers are used for identification purposes only, and we are in no way implying that our products are original equipment parts. Prices subject to change without notice.



Replaces Toro Reelmaster 5010-H Parts

Traction Unit

Front Wheel, Brakes & Hydraulics



| Item No | R&R Part No. | OEM Part No. | Description | Qty Req | Order Quantity |
|---------|------------------|--|-----------------------------------|---------|----------------|
| 93 | R301504 | 2296-42, 301504, 32127-24, 32128-33, 32146-17, 3296-16, 3296-42, 3296-42 , 915661P | Locknut - ESNA 1/4-20 | 10 | |
| 94 | R453009 | 01-166-0400, 24-10-BD, 24-9-AD, 32-9650, 3256-2, 3256-23, 3256-3, 3256-67, 3290-217, 3556-3, 4-2390, 7-0152 | Washer - Flat 5/16 SAE | 8 | |
| 95 | R321-4 | 01-150-1030, 01-178-0406, 20-3-AGD, 321-4, 3222-1 | Bolt - Hex HD 1/4-20 x 3/4 | 8 | |
| 96 | R2412-134 | 2412-134 | R-Clamp | 4 | |
| 97 | R3234-4 | 3234-4 | Bolt - Hx Ser Was HD 1/4-20 x 3/4 | 2 | |
| 98 | R114-3918 | 1-633926, 114-3918 | Stud - Wheel | 10 | |
| 99 | R110-0950 | 110-0950 | Shield - Brake - Front | 2 | |
| 100 | R110-0951 | 110-0951 | Shiel D- Wheel - Rear LH | 1 | |
| 101 | R110-8878 | 110-8878 | Shield-Wheel - Rear RH | 1 | |

All original equipment manufacturers names and part numbers are used for identification purposes only, and we are in no way implying that our products are original equipment parts. Prices subject to change without notice.