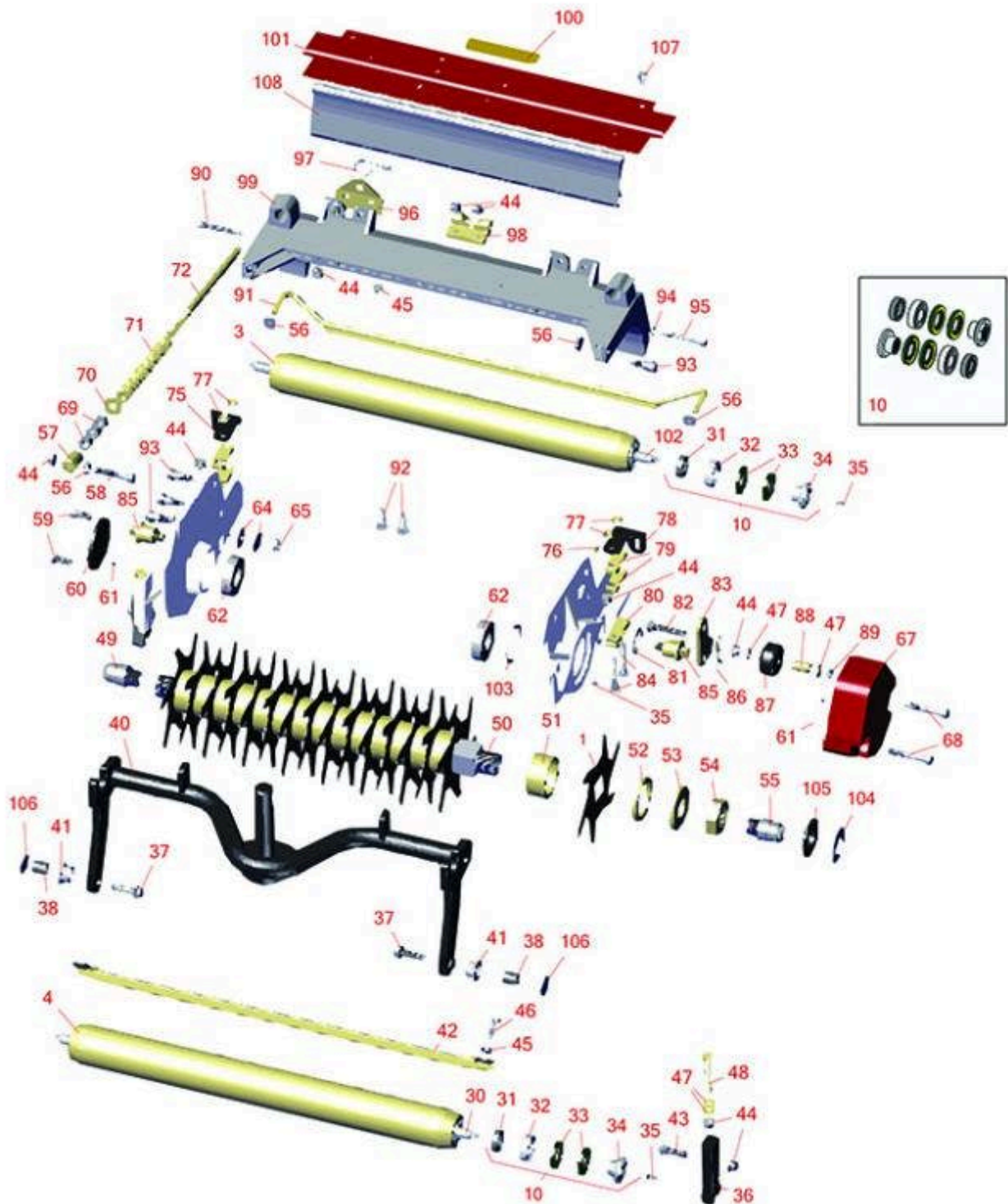




Replaces Toro Reelmaster 5010-H Parts

Verti-Cut Unit with 7" Reel - Model 03619

Verti-Cut Reel & Frame



All original equipment manufacturers names and part numbers are used for identification purposes only, and we are in no way implying that our products are original equipment parts. Prices subject to change without notice.



Replaces Toro Reelmaster 5010-H Parts

Verti-Cut Unit with 7" Reel - Model 03619

Verti-Cut Reel & Frame



Item No	R&R Part No.	OEM Part No.	Description	Qty Req	Order Quantity
---------	--------------	--------------	-------------	---------	----------------

Verti-Cut Blades

1	R93-3038-03	93-3038, 93-3038-03	Blade - Vertical Mower 1/16x7.25	16	
1	R106-8625	106-8625	Blade - Carbide Tip	16	

R&R Rollers

3	R114-5404	114-5404, 137-6107	Roller - Smooth Tubular Steel - Long	1	
<i>Tech Note: Constructed with a through shaft, this heavy-duty roller uses greasable stainless ball bearings. (2006 - 2007):</i>					
4	R114-5419	114-5419, 137-6109	Roller - Smooth Tubular Steel	1	

Overhaul Kits

10	R114-5430	114-5430	Overhaul Kit - Roller	1	
<i>Tech Note: Includes 4 ea.: R112-7494 Seals; 2 ea.: R302-5 Grease Zerks, R114-3717 Seals, R112-5290 Bearings & R114-3745 Locknuts:</i>					

Other Parts Available

30	R114-5403	114-5403	Shaft - Front Roller	1	
31	R114-3717	114-3717	Seal	2	
32	R112-5290	112-5290, 251--346, 251-346, 72-5430	Bearing - Stainless	2	
33	R112-7494	112-7494	Seal	4	
34	R114-3745	114-3745, 114-5411	Locknut - Bearing - Stainless	2	

All original equipment manufacturers names and part numbers are used for identification purposes only, and we are in no way implying that our products are original equipment parts. Prices subject to change without notice.



Replaces Toro Reelmaster 5010-H Parts

Verti-Cut Unit with 7" Reel - Model 03619

Verti-Cut Reel & Frame



Item No	R&R Part No.	OEM Part No.	Description	Qty Req	Order Quantity
35	R302-5	21-6010, 302-11, 302-37, 302-47, 302-5, 302-57, 302-58, 302-6, 31-0300, 32-9660, 60-0800, 62-3880, 92-4181	Fitting - Grease	6	
36	R125-2796	125-2796	Bracket- Front HOC	2	
<i>Tech Note: Fits 2013 & Newer:</i>					
37	R3234-19	3234-19	Bolt - Hex Washer 3/8-16x1-3/4	2	
38	R108-4279	108-4279	Spacer - Frame	2	
40	R107-7433	107-7433	Carrier Frame Assy	1	
41	R93-2877	93-2877	Bushing - Flanged	2	
42	R108-4475-03	108-4475-03	Scraper - Full Front 2.5 in	1	
43	R3231-4	01-157-0440, 01-173-0612, 3231-4	Bolt - Carriage 3/8-16 x 1-1/2	2	
44	R104-8301	104-8301, 104-9301, 109-6658, 133-7570	Locknut - 3/8-16 Nylon Flanged	13	
45	R445722	30-8980, 32128-2, 32128-20, 32128-20, 445722	Nut - Serrated Washer	6	
46	R322-16	322-16, Apr-00	Bolt - Hex HD 5/16-18 x 1-1/8	2	

All original equipment manufacturers names and part numbers are used for identification purposes only, and we are in no way implying that our products are original equipment parts. Prices subject to change without notice.



Replaces Toro Reelmaster 5010-H Parts

Verti-Cut Unit with 7" Reel - Model 03619

Verti-Cut Reel & Frame



Item No	R&R Part No.	OEM Part No.	Description	Qty Req	Order Quantity
47	R453011	01-166-0100, 01-166-0120, 01-166-0270, 01-166-0500, 01-166-0600, 01-166-0620, 132-4593, 2356-3, 237-12, 24-10-AD, 24-11-AD, 24-11-BD, 24-12-AD, 24-12-BD, 30-9310, 32-8190, 3256-24, 3256-3, 3256-36, 3256-4, 453011, 47-9950, 48-9220, 513458, 7-0052	Washer - Flat 3/8 SAE Y/Zinc	8	
48	R112-7451	100-9429, 112-7451	Bolt - Hex Tap 3/8-16 x 2-3/4	2	
49	R108-4978	108-4978, 131-0516	Insert - RH - Verti-Cut Shaft	1	
50	R108-4975	108-4975	Shaft Assy - V-Cut	1	
51	R105-0172	105-0172	Spacer - Verticut Shaft 1.2 in	15	
52	R105-0177	105-0177	Spacer - Verticut Shaft 1/4 in	1	
53	R105-0173	105-0173	Washer - Verticut Shaft 1/4 in	1	
54	R3220-25	3220-25	Nut - Jam 1-3/8-12	1	
55	R108-4977	108-4977, 131-0515	Insert - LH - Verti-Cut Shaft	1	

All original equipment manufacturers names and part numbers are used for identification purposes only, and we are in no way implying that our products are original equipment parts. Prices subject to change without notice.



Replaces Toro Reelmaster 5010-H Parts

Verti-Cut Unit with 7" Reel - Model 03619

Verti-Cut Reel & Frame



Item No	R&R Part No.	OEM Part No.	Description	Qty Req	Order Quantity
56	R32128-43	30-8990, 32128-43, 3290-357	Nut - Flanged Whiz - 3/8-16	9	
57	R99-8662	99-8662	Tube - Spring	1	
58	R104-3396	104-3396	Bolt - Hex HD 3/8-16 x 2-1/4	1	
59	R323-6	01-150-0010, 01-178-0608, 20-47-AD, 20-47-AGD, 3224-2, 323-6, 49-3510, 908034P, 908332	Bolt - Hex HD 3/8-16 x 1 GR5 YZ	2	
60	R94-2703	94-2703	Plug - Plastic Spindle Housing	1	
61	R112-6967	112-6967	O-Ring	2	
62	R115-3296	115-3296	Bearing	2	
64	R453013	01-166-0140, 01-166-0700, 3256-5, 80-4850	Washer - Flat 7/16	4	
65	R3296-28	119-4154, 140-9234, 32127-34, 32128-7, 32128-8, 32136-7, 3296-28	Nut - 1/2-20 ESNA Jam	2	
67	R108-4269-01	108-4269-01	Weight	1	

All original equipment manufacturers names and part numbers are used for identification purposes only, and we are in no way implying that our products are original equipment parts. Prices subject to change without notice.



Replaces Toro Reelmaster 5010-H Parts

Verti-Cut Unit with 7" Reel - Model 03619

Verti-Cut Reel & Frame



Item No	R&R Part No.	OEM Part No.	Description	Qty Req	Order Quantity
68	R101526	01-150-0970, 01-178-0620, 101526, 20-53-AGD, 321-11, 3224-8, 323-11, 323-12, 323-31, 323-4, 323-47	Bolt - Hex HD 3/8-16 x 2-1/2 GR5	2	
69	R443818	01-191-0813, 3218-18, 3218-5, 3248-18	Nut - 1/2-13 Hex Jam Zinc	3	
70	R453017	01-166-0050, 01-166-0240, 01-166-0800, 24-13-AD, 24-14-AD, 32-8110, 3256-26, 3256-6, 453017, 69-8980, 87-7270	Washer - Flat 1/2	1	
71	R110-4079	110-4079	Spring	1	
72	R115-2007	107-7437, 115-2007	Rod - Spring	1	
75	R107-3281	107-3281	Bracket - Scraper - RH	1	
76	R170714	302-34, 302-39, 62-3520	Fitting - Pressure Relief	2	
77	R104-8300	104-8300, 104-8300 , 119-4041	Locknut - 5/16-18 Flanged Y/Zinc	4	
78	R107-3279	107-3279	Bracket - Scraper - LH	1	

All original equipment manufacturers names and part numbers are used for identification purposes only, and we are in no way implying that our products are original equipment parts. Prices subject to change without notice.



Replaces Toro Reelmaster 5010-H Parts

Verti-Cut Unit with 7" Reel - Model 03619

Verti-Cut Reel & Frame



Item No	R&R Part No.	OEM Part No.	Description	Qty Req	Order Quantity
79	R119-0626	119-0626	Shim - Roller - 1/4 in - Slotted	4	
80	R106-3924	106-3924	Bracket - Rear Roller	2	
81	R3254-21	3254-21	Washer - 1 in Interl Star	2	
82	R3231-7	3231-33, 3231-7	Bolt - Carriage 3/8-16 x 2-1/4	2	
83	R108-4286	108-4286	Bracket - Adj	2	
84	RP17609-2	106-9758, 3230-7	Bolt - Carriage 5/16-18 x 1-1/2	4	
85	R108-4289	108-4289	Pin - Roller Mounting	2	
86	R3290-355	01-159-0050, 3290-355, 58-5370	Pin - Bridge - Snap	2	
87	R108-4293	108-4293	Roller - Verti-Cut	2	
88	R59-2580	59-2580	Spacer - Wheel	2	
89	R3296-59	3296-59	Locknut - 3/8-16 Nylon Jam	2	
90	R107-7773	107-7773	Bolt - Soc HD Cap 5/16-18 x 2-1/2	1	
91	R107-2999	107-2999	Scraper - Rear Roller	1	
92	R3231-25	01-173-0610, 30-9970, 3231-25, 3231-3, 900064P	Bolt - Carriage 3/8-16 x 1-1/4	4	
93	R107-2979	107-2979	Bolt - Shoulder	6	
94	R3256-74	3256-74	Washer - Flat	1	
95	R322-14	01-150-0830, 01-178-0524, 30-8900, 322-14	Bolt - Hex HD 5/16-18 x 3 GR5	1	

All original equipment manufacturers names and part numbers are used for identification purposes only, and we are in no way implying that our products are original equipment parts. Prices subject to change without notice.



Replaces Toro Reelmaster 5010-H Parts

Verti-Cut Unit with 7" Reel - Model 03619

Verti-Cut Reel & Frame



Item No	R&R Part No.	OEM Part No.	Description	Qty Req	Order Quantity
96	R110-4069	110-4069	Bracket	1	
97	R92-2762	92-2762	Pin - Snap	1	
98	R110-4058	110-4058	Bracket - Chain	1	
99	R107-3258	107-3258	Frame	1	
100	R93-6688	93-6688	Decal - Warning	1	
101	R107-2996	107-2996	Grass Shield - Front	1	
102	R114-5407	114-5407	Shaft - Long Rear Roller	1	
103	R105-5700	105-5700, 115-5258	Wave Washer - Bearing	1	
104	R115-3299	115-3299	Seal- Flocked	2	
105	R127-4284	127-4284	Washer - Special	2	
106	R130-8094	130-8094	Washer	2	
107	R3234-7	3234-7	Bolt - Hex Washer HD 5/16-18 x 5/8	4	
108	R125-1978	125-1978	Grass Shield - Rear	1	

All original equipment manufacturers names and part numbers are used for identification purposes only, and we are in no way implying that our products are original equipment parts. Prices subject to change without notice.