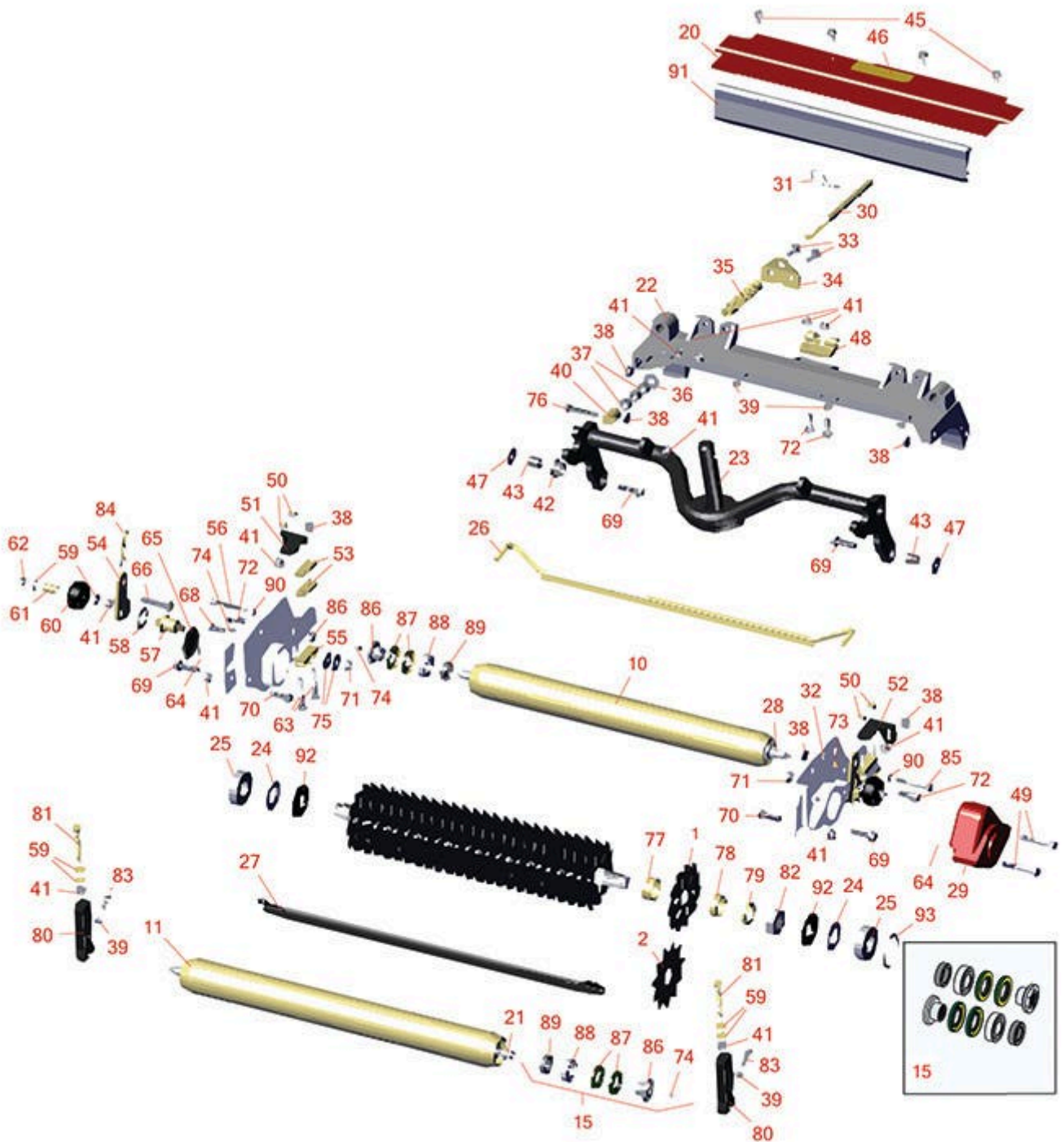




Replaces Toro Reelmaster 5010-H Parts

Verti-Cut Unit with 5" Reel - Model 03618

Verti-Cut Reel & Frame



All original equipment manufacturers names and part numbers are used for identification purposes only, and we are in no way implying that our products are original equipment parts. Prices subject to change without notice.



Replaces Toro Reelmaster 5010-H Parts

Verti-Cut Unit with 5" Reel - Model 03618

Verti-Cut Reel & Frame



Item No	R&R Part No.	OEM Part No.	Description	Qty Req	Order Quantity
---------	--------------	--------------	-------------	---------	----------------

Overhaul Kits

15	R114-5430	114-5430	Overhaul Kit - Roller	1	
----	------------------	----------	-----------------------	---	--

Tech Note: Includes 4 ea.: R112-7494 Seals; 2 ea.: R302-5 Grease Zerks, R114-3717 Seals, R112-5290 Bearings & R114-3745 Locknuts:

Verti-Cut Blades

1	R150109C	106-5422	Verti-Cut Blade - Carbide Tipped 1.2mm	25	
1	R150209C	106-6355	Verti-Cut Blade - Carbide Tipped 2mm	25	
2	R17-1590	17-1590	Verti-Cut Blade	25	

R&R Rollers

10	R114-5404	114-5404, 137-6107	Roller - Smooth Tubular Steel - Long	1	
----	------------------	-----------------------	---	---	--

Tech Note: Constructed with a through shaft, this heavy-duty roller uses greasable stainless ball bearings. (2006 - 2007):

11	R114-5419	114-5419, 137-6109	Roller - Smooth Tubular Steel	1	
----	------------------	-----------------------	-------------------------------	---	--

Other Parts Available

20	R107-2996	107-2996	Grass Shield - Front	1	
21	R114-5403	114-5403	Shaft - Front Roller	1	
22	R107-2951	107-2951	Frame	1	
23	R106-3937	106-3937	Carrier Frame Assy	1	
24	R115-3299	115-3299	Seal- Flocked	2	
25	R115-3296	115-3296	Bearing	2	
26	R107-2999	107-2999	Scraper - Rear Roller	1	

All original equipment manufacturers names and part numbers are used for identification purposes only, and we are in no way implying that our products are original equipment parts. Prices subject to change without notice.



Replaces Toro Reelmaster 5010-H Parts

Verti-Cut Unit with 5" Reel - Model 03618

Verti-Cut Reel & Frame



Item No	R&R Part No.	OEM Part No.	Description	Qty Req	Order Quantity
27	R108-4475-03	108-4475-03	Scraper - Full Front 2.5 in	1	
28	R114-5407	114-5407	Shaft - Long Rear Roller	1	
29	R108-9090-01	108-9090-01	Weight	1	
30	R108-4959	108-4959	Rod - Turf Tension	1	
31	R92-2762	92-2762	Pin - Snap	1	
32	R106-4214	106-4214	Set Screw - 1/4-20 x 1/2 Cone Point	1	
32	R3245-35	3245-35	Screw - Set 1/4-28 x 1/4	1	
33	R3231-25	01-173-0610, 30-9970, 3231-25, 3231-3, 900064P	Bolt - Carriage 3/8-16 x 1-1/4	4	
34	R110-4069	110-4069	Bracket	1	
35	R108-4960	108-4960	Spring - Turf Tension	1	
36	R453017	01-166-0050, 01-166-0240, 01-166-0800, 24-13-AD, 24-14-AD, 32-8110, 3256-26, 3256-6, 453017, 69-8980, 87-7270	Washer - Flat 1/2	1	
37	R443818	01-191-0813, 3218-18, 3218-5, 3248-18	Nut - 1/2-13 Hex Jam Zinc	3	
38	R32128-43	30-8990, 32128-43, 3290-357	Nut - Flanged Whiz - 3/8-16	5	

All original equipment manufacturers names and part numbers are used for identification purposes only, and we are in no way implying that our products are original equipment parts. Prices subject to change without notice.



Replaces Toro Reelmaster 5010-H Parts

Verti-Cut Unit with 5" Reel - Model 03618

Verti-Cut Reel & Frame



Item No	R&R Part No.	OEM Part No.	Description	Qty Req	Order Quantity
39	R445722	30-8980, 32128-2, 32128-20, 32128-20 , 445722	Nut - Serrated Washer	4	
40	R99-8662	99-8662	Tube - Spring	1	
41	R104-8301	104-8301, 104-9301, 109-6658, 133-7570	Locknut - 3/8-16 Nylon Flanged	5	
42	R93-2877	93-2877	Bushing - Flanged	2	
43	R108-4279	108-4279	Spacer - Frame	2	
45	R3234-7	3234-7	Bolt - Hex Washer HD 5/16-18 x 5/8	4	
46	R93-6688	93-6688	Decal - Warning	1	
47	R130-8094	130-8094	Washer	2	
48	R110-4058	110-4058	Bracket - Chain	1	
49	R101526	01-150-0970, 01-178-0620, 101526, 20-53-AGD, 321-11, 3224-8, 323-11, 323-12, 323-31, 323-4, 323-47	Bolt - Hex HD 3/8-16 x 2-1/2 GR5	2	
50	R104-8300	104-8300, 104-8300 , 119-4041	Locknut - 5/16-18 Flanged Y/Zinc	4	
51	R107-3281	107-3281	Bracket - Scraper - RH	1	
52	R107-3279	107-3279	Bracket - Scraper - LH	1	

All original equipment manufacturers names and part numbers are used for identification purposes only, and we are in no way implying that our products are original equipment parts. Prices subject to change without notice.



Replaces Toro Reelmaster 5010-H Parts

Verti-Cut Unit with 5" Reel - Model 03618

Verti-Cut Reel & Frame



Item No	R&R Part No.	OEM Part No.	Description	Qty Req	Order Quantity
53	R119-0626	119-0626	Shim - Roller - 1/4 in - Slotted	4	
54	R108-4286	108-4286	Bracket - Adj	2	
55	R106-3924	106-3924	Bracket - Rear Roller	2	
56	R107-7773	107-7773	Bolt - Soc HD Cap 5/16-18 x 2-1/2	1	
57	R108-4289	108-4289	Pin - Roller Mounting	2	
58	R3254-21	3254-21	Washer - 1 in Interl Star	2	
59	R453011	01-166-0100, 01-166-0120, 01-166-0270, 01-166-0500, 01-166-0600, 01-166-0620, 132-4593, 2356-3, 237-12, 24-10-AD, 24-11-AD, 24-11-BD, 24-12-AD, 24-12-BD, 30-9310, 32-8190, 3256-24, 3256-3, 3256-36, 3256-4, 453011, 47-9950, 48-9220, 513458, 7-0052	Washer - Flat 3/8 SAE Y/Zinc	4	
60	R108-4293	108-4293	Roller - Verti-Cut	2	
61	R59-2580	59-2580	Spacer - Wheel	2	
62	R3296-59	3296-59	Locknut - 3/8-16 Nylon Jam	2	

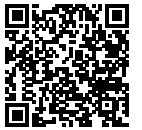
All original equipment manufacturers names and part numbers are used for identification purposes only, and we are in no way implying that our products are original equipment parts. Prices subject to change without notice.



Replaces Toro Reelmaster 5010-H Parts

Verti-Cut Unit with 5" Reel - Model 03618

Verti-Cut Reel & Frame



Item No	R&R Part No.	OEM Part No.	Description	Qty Req	Order Quantity
63	RP17609-2	106-9758, 3230-7	Bolt - Carriage 5/16-18 x 1-1/2	4	
64	R237-68	237-68	O-Ring	2	
65	R150485	2410-30, 2410-30OSS	Cap - Protective Bearing Housing	1	
66	R3231-7	3231-33, 3231-7	Bolt - Carriage 3/8-16 x 2-1/4	2	
68	R3234-11	3234-11	Bolt - Hex Washer HD	2	
69	R3234-19	3234-19	Bolt - Hex Washer 3/8-16x1-3/4	4	
70	R3231-4	01-157-0440, 01-173-0612, 3231-4	Bolt - Carriage 3/8-16 x 1-1/2	2	
71	R3296-28	119-4154, 140-9234, 32127-34, 32128-7, 32128-8, 32136-7, 3296-28	Nut - 1/2-20 ESNA Jam	2	
72	R107-2979	107-2979	Bolt - Shoulder	6	
73	R170714	302-34, 302-39, 62-3520	Fitting - Pressure Relief	2	

All original equipment manufacturers names and part numbers are used for identification purposes only, and we are in no way implying that our products are original equipment parts. Prices subject to change without notice.



Replaces Toro Reelmaster 5010-H Parts

Verti-Cut Unit with 5" Reel - Model 03618

Verti-Cut Reel & Frame



Item No	R&R Part No.	OEM Part No.	Description	Qty Req	Order Quantity
74	R302-5	21-6010, 302-11, 302-37, 302-47, 302-5, 302-57, 302-58, 302-6, 31-0300, 32-9660, 60-0800, 62-3880, 92-4181	Fitting - Grease	4	
75	R453013	01-166-0140, 01-166-0700, 3256-5, 80-4850	Washer - Flat 7/16	4	
76	R104-3396	104-3396	Bolt - Hex HD 3/8-16 x 2-1/4	1	
77	R82-6600	82-6600	Spacer - V-Cut	24	
77	R17-1600	17-1600	Spacer - V-Cut Reel 1/4	1	
78	R17-1580	17-1580	Spacer - V-Cut Reel 1/2	1	
79	R108-4994	108-4994	Spacer - 1/4 in - V-Cut Shaft	1	
80	R125-2796	125-2796	Bracket- Front HOC	2	
<i>Tech Note: Fits 2013 & Newer:</i>					
81	R112-7451	100-9429, 112-7451	Bolt - Hex Tap 3/8-16 x 2-3/4	2	
82	R3220-18	3220-18, 67-5840	Nut - Jam V-Cut Shaft	1	
83	R322-16	322-16, Apr-00	Bolt - Hex HD 5/16-18 x 1-1/8	2	
84	R3290-355	01-159-0050, 3290-355, 58-5370	Pin - Bridge - Snap	2	

All original equipment manufacturers names and part numbers are used for identification purposes only, and we are in no way implying that our products are original equipment parts. Prices subject to change without notice.



Replaces Toro Reelmaster 5010-H Parts

Verti-Cut Unit with 5" Reel - Model 03618

Verti-Cut Reel & Frame



Item No	R&R Part No.	OEM Part No.	Description	Qty Req	Order Quantity
85	R322-14	01-150-0830, 01-178-0524, 30-8900, 322-14	Bolt - Hex HD 5/16-18 x 3 GR5	1	
86	R114-3745	114-3745, 114-5411	Locknut - Bearing - Stainless	2	
87	R112-7494	112-7494	Seal	4	
88	R112-5290	112-5290, 251--346, 251-346, 72-5430	Bearing - Stainless	2	
89	R114-3717	114-3717	Seal	2	
90	R3256-74	3256-74	Washer - Flat	1	
91	R125-2098	125-2098	Grass Shield - Rear 22" Unit	1	
92	R127-4284	127-4284	Washer - Special	2	
93	R105-5700	105-5700, 115-5258	Wave Washer - Bearing	1	

All original equipment manufacturers names and part numbers are used for identification purposes only, and we are in no way implying that our products are original equipment parts. Prices subject to change without notice.