

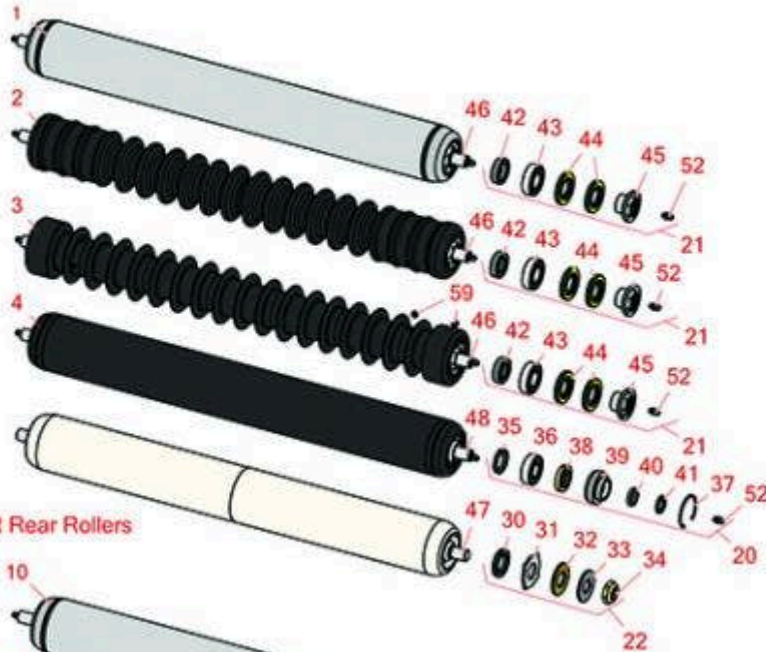


# Replaces Toro Reelmaster 5610-D Parts

DPA Cutting Unit - Models 03681, 03682, 03696 & 03697  
Front Rollers



## R&R Front Rollers



## R&R Rear Rollers



All original equipment manufacturers names and part numbers are used for identification purposes only, and we are in no way implying that our products are original equipment parts. Prices subject to change without notice.



# Replaces Toro Reelmaster 5610-D Parts

DPA Cutting Unit - Models 03681, 03682, 03696 & 03697  
Front Rollers



| Item No   | R&R Part No.     | OEM Part No.                       | Description  | Qty Req | Order Quantity |
|---|------------------|------------------------------------|--|---------|----------------|
| <b>R&amp;R Front Rollers</b>  |                  |                                    |  |         |                |
| 1   | <b>R114-5412</b> | 114-5412                           | Roller - Smooth Tubular Steel                      | 1       |                |
| <i>Detail Description: Constructed with a through shaft, this heavy-duty roller uses greasable stainless ball bearings. (2008 &amp; Up):</i>  |                  |                                    |  |         |                |
| 2   | <b>R1503915</b>  | 110-9608,<br>114-5421              | Roller - Fusion Grooved UHMW Polyethylene Shoulder | 1       |                |
| <i>Detail Description: Fusion Rollers combine the best features of our UHMW plastic rollers with a heavy duty internal bearing system. Machined from solid UHMW plastic that prevents build-up of debris. This roller has a patented deep groove design in the center along with shallow grooves on each end to reduce marking in wet conditions and turns on precision stainless ball bearings and double seals for added life.:</i> |                  |                                    |  |         |                |
| 3   | <b>R1503911</b>  | 110-4050,<br>114-5400,<br>114-5421 | Roller - Fusion Grooved UHMW Polyethylene          | 1       |                |
| <i>Detail Description: Fusion Rollers combine the best features of our UHMW plastic rollers with a heavy-duty internal bearing system. Machined from solid UHMW plastic that prevents build-up of debris. This roller has a patented deep groove design and turns on precision stainless ball bearings and double seals for added life. (2006 &amp; Up):</i>  |                  |                                    |  |         |                |
| 4   | <b>R110-9605</b> | 110-9605                           | Roller - Smooth Tubular Steel                      | 1       |                |
| <i>Detail Description: Constructed with a through shaft, this heavy-duty roller uses greasable ball bearings. (2006 - 2007):</i>  |                  |                                    |  |         |                |
| <b>R&amp;R Rear Rollers</b>   |                  |                                    |  |         |                |
| 10  | <b>R114-5415</b> | 114-5415                           | Roller - Smooth Tubular Steel                      | 1       |                |
| <i>Detail Description: Constructed with a through shaft, this heavy duty roller uses greasable stainless ball bearings. (2008 &amp; Up):</i>  |                  |                                    |  |         |                |
| 11  | <b>R107-4024</b> | 107-4024                           | Smooth Tubular Steel Roller - Long                 | 1       |                |
| <i>Detail Description: Constructed with a through shaft, this heavy-duty roller uses greasable ball bearings. (2006 - 2007):</i>  |                  |                                    |  |         |                |
| 12  | <b>R114-5417</b> | 114-5417                           | Roller - Smooth Solid Steel                        | 1       |                |

All original equipment manufacturers names and part numbers are used for identification purposes only, and we are in no way implying that our products are original equipment parts. Prices subject to change without notice.



# Replaces Toro Reelmaster 5610-D Parts

DPA Cutting Unit - Models 03681, 03682, 03696 & 03697  
Front Rollers



| Item No   | R&R Part No.     | OEM Part No. | Description                              | Qty Req | Order Quantity |
|---|------------------|--------------|--|---------|----------------|
| <i>Detail Description: Constructed with a through shaft, this heavy-duty roller uses greasable stainless ball bearings. (2008 &amp; Up):</i>  |                  |              |  |         |                |
| 13  | <b>R110-4065</b> | 110-4065     | Roller - Smooth Tubular Steel            | 1       |                |
| <i>Detail Description: Constructed with a through shaft, this heavy-duty roller uses greasable ball bearings. (2006 - 2007):</i>  |                  |              |  |         |                |
| 14  | <b>R1503940</b>  | 1503940      | Roller - Smooth UHMW Polyethylene        | 1       |                |
| <i>Detail Description: Machined from solid UHMW, this low maintenance roller uses a 1" solid stainless steel shaft and requires no grease. UHMW material prevents build-up of debris. (2006 &amp; Up):</i>  |                  |              |  |         |                |
| 15  | <b>R1503916</b>  |              | Roller - Fusion Smooth UHMW Polyethylene | 1       |                |
| <i>Detail Description: Fusion Rollers combine the best features of our UHMW plastic rollers with a heavy duty internal bearing system. Machined from solid UHMW plastic that prevents build-up of debris. This roller has stainless precision ball bearings and double seals for added life. (2006 &amp; Up):</i> |                  |              |  |         |                |
| 16  | <b>R1503946</b>  |              | Roller - Smooth UHMW Polyethylene        | 1       |                |
| <i>Detail Description: Machined from solid UHMW, this low maintenance roller uses a 1" solid stainless steel shaft and requires no grease. UHMW material prevents build-up of debris. (2006 &amp; Up):</i>  |                  |              |  |         |                |
| <b>Overhaul Kits</b>  |                  |              |  |         |                |
| 20  | <b>R106-9606</b> | 106-9606     | Overhaul Kit - Roller                    | 0       |                |
| <i>Detail Description: Include 2 ea: R343667 Bearings, R253-70 Seals, R32120-62 Retaining Rings, R93-1251 Seals, R93-1252 Seals, R93-2931 Washers, R93-3007 Seals:</i>  |                  |              |  |         |                |
| 21  | <b>R114-5430</b> | 114-5430     | Overhaul Kit - Roller                    | 0       |                |
| <i>Detail Description: Includes 4 ea.: R112-7494 Seals; 2 ea.: R302-5 Grease Zerks, R114-3717 Seals, R112-5290 Bearings &amp; R114-3745 Locknuts:</i>   |                  |              |  |         |                |
| 22  | <b>R101399</b>   |              | Overhaul Kit - UHMW 2 Pc Roller          | 0       |                |

All original equipment manufacturers names and part numbers are used for identification purposes only, and we are in no way implying that our products are original equipment parts. Prices subject to change without notice.



# Replaces Toro Reelmaster 5610-D Parts

DPA Cutting Unit - Models 03681, 03682, 03696 & 03697  
Front Rollers



| Item No   | R&R Part No.     | OEM Part No.   | Description                   | Qty Req | Order Quantity |
|---|------------------|--|-------------------------------|---------|----------------|
| <i>Detail Description: Fits all R&amp;R 2-1/2" - 3-1/2" Dia. Black UHMW Plastic Rollers that do not use ball bearings.. Includes 2 ea.: R1503230 Star Washers, R1503470 Seals, R150333 Thrust Washers, R3296-15 Locknuts, R1503471 Bronze Thrust Washers:</i> |                  |  |                               |         |                |
| <b>Other Parts Available</b>  |                  |  |                               |         |                |
| 30  | <b>R1503470</b>  |  | Seal - Inner Wiper            | 2       |                |
| 31  | <b>R1503230</b>  |  | Washer - Thrust Outer Keyed   | 2       |                |
| 32  | <b>R1503471</b>  |  | Washer - Thrust SAE660 Bronze | 2       |                |
| 33  | <b>R150333</b>   |  | Washer - Flat Keyed Outer SS  | 2       |                |
| 34  | <b>R3296-15</b>  | 116-7306,<br>32118-5,<br>32127-23,<br>32127-47,<br>3296-15 | Locknut - 3/4-16 Nylon Jam    | 2       |                |
| 35  | <b>R93-3007</b>  | 93-3007  | Seal                          | 4       |                |
| 36  | <b>R343667</b>   | 109966,<br>251-6,<br>38-7820                               | Bearing - Ball                | 4       |                |
| 37  | <b>R32120-62</b> | 32120-62   | Ring - Retaining              | 2       |                |
| 38  | <b>R93-1251</b>  | 93-1251  | Seal                          | 2       |                |
| 39  | <b>R93-1252</b>  | 93-1252  | Seal - Outer                  | 2       |                |
| 40  | <b>R253-70</b>   | 253-70   | Seal                          | 2       |                |
| 41  | <b>R93-2931</b>  | 93-2931  | Washer - Roller Seal          | 2       |                |
| 42  | <b>R114-3717</b> | 114-3717   | Seal                          | 2       |                |
| 43  | <b>R112-5290</b> | 112-5290,<br>251--346,<br>251-346,<br>72-5430              | Bearing - Stainless           | 2       |                |

All original equipment manufacturers names and part numbers are used for identification purposes only, and we are in no way implying that our products are original equipment parts. Prices subject to change without notice.



# Replaces Toro Reelmaster 5610-D Parts

DPA Cutting Unit - Models 03681, 03682, 03696 & 03697  
Front Rollers



| Item No | R&R Part No.     | OEM Part No.   | Description                   | Qty Req | Order Quantity |
|---------|------------------|--|-------------------------------|---------|----------------|
| 44      | <b>R112-7494</b> | 112-7494   | Seal                          | 4       |                |
| 45      | <b>R114-3745</b> | 106-6939,<br>108-3151,<br>114-3745,<br>114-5411  | Locknut - Bearing - Stainless | 2       |                |
| 46      | <b>R114-5403</b> | 114-5403   | Shaft - Front Roller          | 1       |                |
| 47      | <b>R1503923</b>  |  | Shaft - Front Rollers         | 1       |                |
| 48      | <b>R110-4053</b> | 110-4053   | Shaft - Front Roller          | 1       |                |
| 52      | <b>R302-5</b>    | 21-6010,<br>302-11,<br>302-37,<br>302-47,<br>302-5,<br>302-57,<br>302-58,<br>302-6,<br>31-0300,<br>32-9660,<br>60-0800,<br>62-3880,<br>92-4181 | Fitting - Grease              | 2       |                |
| 53      | <b>R114-5410</b> | 114-5410   | Shaft - Short - Rear Roller   | 1       |                |
| 54      | <b>R1503938</b>  |  | Shaft - Short Rear Rollers    | 1       |                |
| 55      | <b>R114-5407</b> | 114-5407   | Shaft - Long Rear Roller      | 1       |                |
| 56      | <b>R1503949</b>  |  | Shaft - Long Rear Rollers     | 1       |                |
| 57      | <b>R107-3296</b> | 107-3296,<br>99-5717   | Shaft - Rear Long Roller      | 1       |                |
| 58      | <b>R110-4060</b> | 110-4060   | Shaft                         | 1       |                |
| 59      | <b>R300106</b>   | 104-1835,<br>300106  | Screw - Set 5/16-18 x 1/4     | 4       |                |

All original equipment manufacturers names and part numbers are used for identification purposes only, and we are in no way implying that our products are original equipment parts. Prices subject to change without notice.