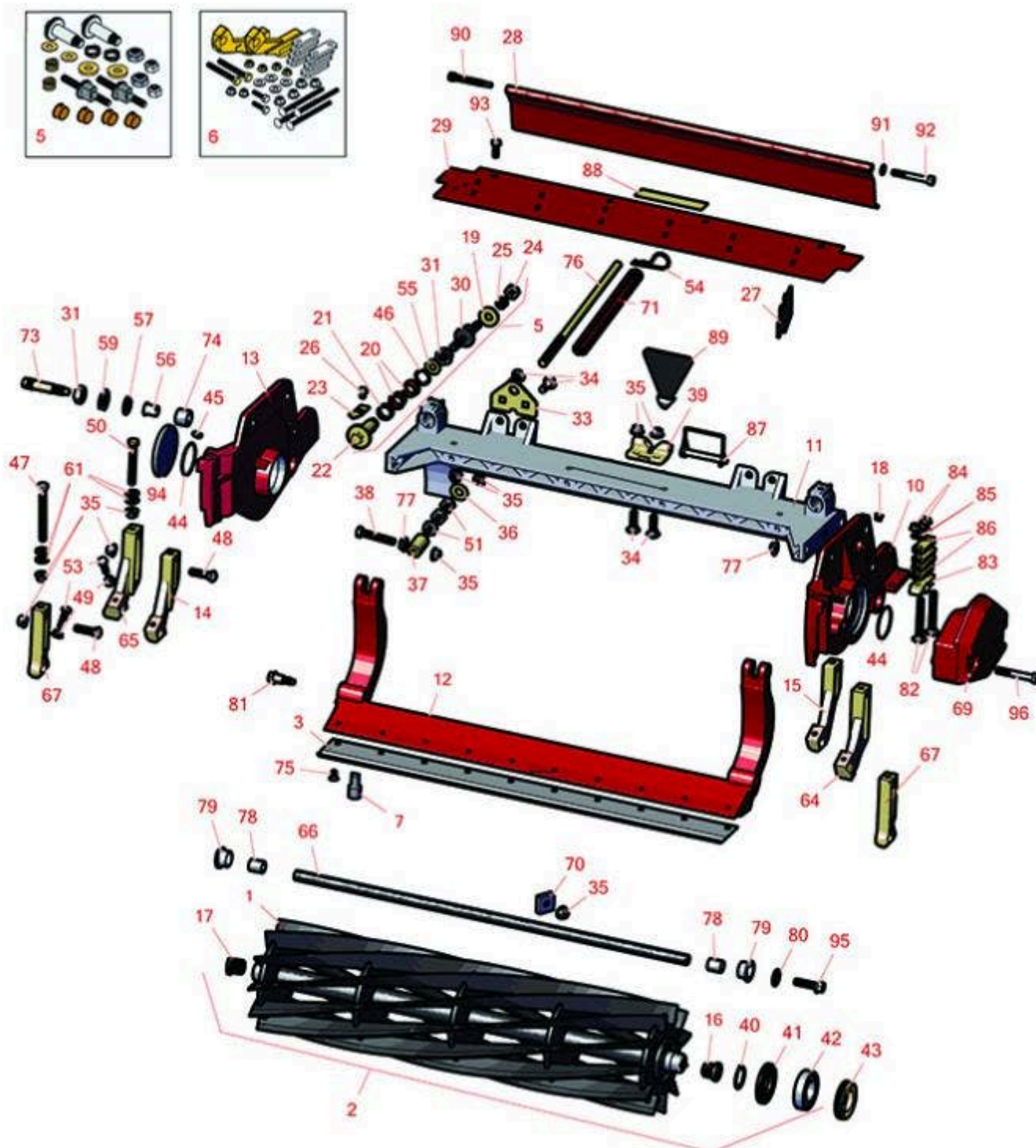




# Replaces Toro Reelmaster 7000-D Parts

27in Cutting Unit - Models 03710 & 03711

Reel & Bedknife



All original equipment manufacturers names and part numbers are used for identification purposes only, and we are in no way implying that our products are original equipment parts. Prices subject to change without notice.



## Replaces Toro Reelmaster 7000-D Parts

27in Cutting Unit - Models 03710 & 03711

Reel & Bedknife



Item No	R&R Part No.	OEM Part No.	Description	Qty Req	Order Quantity
---------	--------------	--------------	-------------	---------	----------------

### R&R Reels Lifetime Guaranteed

1	<b>R115-8270</b>	115-8270	Reel - 5 Blade 27x7	1
---	------------------	----------	---------------------	---

*Detail Description: R&R Reel blades are expertly crafted from premium high carbon-boron alloy steel, heat-treated to perfectly complement both R&R and OEM bedknives. Each reel undergoes precision cylindrical grinding on bearing surfaces, followed by relief grinding for optimal performance. Advanced computer balancing ensures extended reel and bearing life. Backed by our lifetime guarantee against defects in materials and craftsmanship under normal use, R&R Reels deliver unmatched durability and cutting precision you can trust.:*

1	<b>R127-2093</b>	127-2093	Reel - 5 Blade Radial 27x7	1
---	------------------	----------	----------------------------	---

*Detail Description: R&R Reel blades are expertly crafted from premium high carbon-boron alloy steel, heat-treated to perfectly complement both R&R and OEM bedknives. Each reel undergoes precision cylindrical grinding on bearing surfaces, followed by relief grinding for optimal performance. Advanced computer balancing ensures extended reel and bearing life. Backed by our lifetime guarantee against defects in materials and craftsmanship under normal use, R&R Reels deliver unmatched durability and cutting precision you can trust.:*

### R&R Razor Premium Alloy Reels Lifetime Guaranteed

1	<b>R115-8275</b>	115-8275	Reel - 8 Blade 27x7	1
---	------------------	----------	---------------------	---

*Detail Description: R&R Reel blades are expertly crafted from premium high carbon-boron alloy steel, heat-treated to perfectly complement both R&R and OEM bedknives. Each reel undergoes precision cylindrical grinding on bearing surfaces, followed by relief grinding for optimal performance. Advanced computer balancing ensures extended reel and bearing life. Backed by our lifetime guarantee against defects in materials and craftsmanship under normal use, R&R Reels deliver unmatched durability and cutting precision you can trust.:*

1	<b>R133-8269</b>		Reel - 8 Blade Razor Series Radial 27x7	1
---	------------------	--	---	---

*Detail Description: R&R Razor Reels are manufactured from a special high alloy steel and then hardened to RC48-51 to match the temper of our Razor bedknives and original equipment premium series bedknives. All R&R Reels are cylindrically ground on bearing surfaces, relief ground and precision computer balanced for extended bearing and reel life. R&R Products Reels are guaranteed against defects in material and workmanship for the life of the reel under normal use. You can expect up to double the life from Razor reels over standard reels.:*

1	<b>R133-8271</b>	133-8271	Reel - 11 Blade Razor Series Radial 27x7	1
---	------------------	----------	--	---

All original equipment manufacturers names and part numbers are used for identification purposes only, and we are in no way implying that our products are original equipment parts. Prices subject to change without notice.



## Replaces Toro Reelmaster 7000-D Parts

27in Cutting Unit - Models 03710 & 03711

Reel & Bedknife



Item No	R&R Part No.	OEM Part No.	Description	Qty Req	Order Quantity
---------	--------------	--------------	-------------	---------	----------------

*Detail Description: R&R Razor Reels are manufactured from a special high alloy steel and then hardened to RC48-51 to match the temper of our Razor bedknives and original equipment premium series bedknives. All R&R Reels are cylindrically ground on bearing surfaces, relief ground and precision computer balanced for extended bearing and reel life. R&R Products Reels are guaranteed against defects in material and workmanship for the life of the reel under normal use. You can expect up to double the life from Razor reels over standard reels.:*

1	<b>R127-2094</b>	127-2094	Reel - 8 Blade Radial 27x7	1
---	------------------	----------	----------------------------	---

*Detail Description: R&R Reel blades are expertly crafted from premium high carbon-boron alloy steel, heat-treated to perfectly complement both R&R and OEM bedknives. Each reel undergoes precision cylindrical grinding on bearing surfaces, followed by relief grinding for optimal performance. Advanced computer balancing ensures extended reel and bearing life. Backed by our lifetime guarantee against defects in materials and craftsmanship under normal use, R&R Reels deliver unmatched durability and cutting precision you can trust.:*

1	<b>R115-8278</b>	115-8278	Reel - 11 Blade 27x7	1
---	------------------	----------	----------------------	---

*Detail Description: R&R Reel blades are expertly crafted from premium high carbon-boron alloy steel, heat-treated to perfectly complement both R&R and OEM bedknives. Each reel undergoes precision cylindrical grinding on bearing surfaces, followed by relief grinding for optimal performance. Advanced computer balancing ensures extended reel and bearing life. Backed by our lifetime guarantee against defects in materials and craftsmanship under normal use, R&R Reels deliver unmatched durability and cutting precision you can trust.:*

1	<b>R127-2095</b>	127-2095	Reel - 11 Blade Radial 27x7	1
---	------------------	----------	-----------------------------	---

*Detail Description: R&R Reel blades are expertly crafted from premium high carbon-boron alloy steel, heat-treated to perfectly complement both R&R and OEM bedknives. Each reel undergoes precision cylindrical grinding on bearing surfaces, followed by relief grinding for optimal performance. Advanced computer balancing ensures extended reel and bearing life. Backed by our lifetime guarantee against defects in materials and craftsmanship under normal use, R&R Reels deliver unmatched durability and cutting precision you can trust.:*

2	<b>R137-8460</b>		Reel - 8 Blade Razor Radial (RR) w/Bearings and Seals 27x7	1
---	------------------	--	--	---

*Detail Description: R&R Razor Reels are manufactured from a special high alloy steel and then hardened to RC48-51 to match the temper of our Razor bedknives and original equipment premium series bedknives. All R&R Reels are cylindrically ground on bearing surfaces, relief ground and precision computer balanced for extended bearing and reel life. R&R Products Reels are guaranteed against defects in material and workmanship for the life of the reel under normal use. You can expect up to double the life from Razor reels over standard reels.:*

All original equipment manufacturers names and part numbers are used for identification purposes only, and we are in no way implying that our products are original equipment parts. Prices subject to change without notice.



## Replaces Toro Reelmaster 7000-D Parts

27in Cutting Unit - Models 03710 & 03711

Reel & Bedknife



Item No	R&R Part No.	OEM Part No.	Description	Qty Req	Order Quantity
2	<b>R137-8461</b>		Reel - 11 Blade Razor Radial (RR) w/Bearings and Seals 27x7	1	

*Detail Description: R&R Razor Reels are manufactured from a special high alloy steel and then hardened to RC48-51 to match the temper of our Razor bedknives and original equipment premium series bedknives. All R&R Reels are cylindrically ground on bearing surfaces, relief ground and precision computer balanced for extended bearing and reel life. R&R Products Reels are guaranteed against defects in material and workmanship for the life of the reel under normal use. You can expect up to double the life from Razor reels over standard reels.:*

### R&R Bed Knives

3	<b>R114-9388</b>	114-9388	Bedknife - 27 in Unit - Standard	1	
---	------------------	----------	----------------------------------	---	--

*Detail Description: R&R Bedknives are manufactured from high carbon-boron alloy steel and then hardened to RC46-49 to match the temper of our reel blades and original equipment reels. Bedknives are surface ground on the top and front edge and straightened three times before being packaged with oil for rust prevention. All R&R Bedknives now have an increased front edge grind for added life. All R&R Bedknives are guaranteed against defects in material and workmanship under normal use for the life of the part.:*

3	<b>R114-9390</b>	114-9390	Bedknife - 27 in Unit - Heavy Duty	1	
---	------------------	----------	------------------------------------	---	--

*Detail Description: R&R Bedknives are manufactured from high carbon-boron alloy steel and then hardened to RC46-49 to match the temper of our reel blades and original equipment reels. Bedknives are surface ground on the top and front edge and straightened three times before being packaged with oil for rust prevention. All R&R Bedknives now have an increased front edge grind for added life. All R&R Bedknives are guaranteed against defects in material and workmanship under normal use for the life of the part.:*

### R&R Razor Tool Steel Bedknives, Lifetime Guaranteed

3	<b>R112-8910</b>	112-8910	Bedknife - Razor Tool Steel - 27 High Cut	1	
---	------------------	----------	---	---	--

*Detail Description: R&R Razor bedknives are manufactured from premium alloy tool steel and then hardened to RC48-51 to match the temper of our Razor reel blades and original equipment premium series reels. Bedknives are surface ground on the top and front edge and specially packaged for rust prevention. All R&R Bedknives now have an increased front edge grind for added life. All R&R Bedknives are guaranteed against defects in material and workmanship under normal use for the life of the part. You can expect up to double the life over standard bedknives.:*

All original equipment manufacturers names and part numbers are used for identification purposes only, and we are in no way implying that our products are original equipment parts. Prices subject to change without notice.





## Replaces Toro Reelmaster 7000-D Parts

27in Cutting Unit - Models 03710 & 03711

Reel & Bedknife



Item No	R&R Part No.	OEM Part No.	Description	Qty Req	Order Quantity
---------	--------------	--------------	-------------	---------	----------------

### Overhaul Kits

5	<b>R120-7230</b>	120-7230	Overhaul Kit - Fits DPA Units	0	
---	------------------	----------	-------------------------------	---	--

*Detail Description: Incl 2 ea.: R108-0015, R115-7039, R119-4155, R120-5116, R120-5118, R120-5120, R3296-33, R3296-48 & 4 ea: R106-5344:*

6	<b>R110-9600</b>	110-9600	High HOC Kit	0	
---	------------------	----------	--------------	---	--

*Tech Note: Incl: 1 ea #64,65, 2 ea. #49,50,53, 4 ea #35,61,82,84, 8 ea #82:*

*Detail Description: Includes 1 ea.: R120-0404, R120-0405 & 2 ea: R112-7451, R322-16, R445722 & 4 ea.: R106-9758, R104-8300, R453011, R104-8301 & 8 ea: R106-3925:*

7	<b>R51-0880</b>	51-0880	Bedknife Screw Driver Tool	0	
---	-----------------	---------	----------------------------	---	--

*Detail Description: Easily install and remove bed knife screws with the help of a ratchet with 3/8" drive. Tool manufactured with hardened alloy steel.:*

8	<b>R117-0975</b>	117-0975	Tool- Reel Bearing Installation	1	
---	------------------	----------	---------------------------------	---	--

### Other Parts Available

10	<b>R108-9082</b>	108-9082	Side Plate - LH - Fits OEM Units Only	1	
----	------------------	----------	---------------------------------------	---	--

11	<b>R112-8935</b>	112-8935	Frame - Center - 27 in Unit	1	
----	------------------	----------	-----------------------------	---	--

12	<b>R112-8908-01</b>	112-8908-01	Bedbar - 27 in - Fits OEM Units Only	1	
----	---------------------	-------------	--------------------------------------	---	--

13	<b>R108-9083</b>	108-9083	Side Plate - RH - Fits OEM Units Only	1	
----	------------------	----------	---------------------------------------	---	--

14	<b>R108-4214</b>	108-4214	Bracket-HOC - RH - Groomer	1	
----	------------------	----------	----------------------------	---	--

15	<b>R108-4213</b>	108-4213	Bracket- HOC - LH - Groomer	1	
----	------------------	----------	-----------------------------	---	--

16	<b>R107-3276</b>	107-3276	Insert - Threaded - LH - 9 Tooth	1	
----	------------------	----------	----------------------------------	---	--

17	<b>R107-3275</b>	107-3275	Insert - Threaded - RH - 9 Tooth	1	
----	------------------	----------	----------------------------------	---	--

All original equipment manufacturers names and part numbers are used for identification purposes only, and we are in no way implying that our products are original equipment parts. Prices subject to change without notice.



## Replaces Toro Reelmaster 7000-D Parts

27in Cutting Unit - Models 03710 & 03711

Reel & Bedknife



Item No	R&R Part No.	OEM Part No.	Description	Qty Req	Order Quantity
18	<b>R170714</b>	302-34, 302-39, 62-3520	Fitting - Pressure Relief	2	
19	<b>R119-4155</b>	119-4155	Washer - Hardened	2	
<i>Tech Note: 2012 &amp; Newer:</i>					
19	<b>R99-2098</b>	99-2098	Washer - Bed Bar Adjuster	2	
<i>Tech Note: 2011 Only:</i>					
20	<b>R106-5344</b>	106-5344	Bushing - Flanged and Keyed	4	
21	<b>R120-5116</b>	120-5116	Washer - Wave	2	
<i>Tech Note: 2012 &amp; Newer:</i>					
22	<b>R120-5118</b>	120-5118	Shaft - Adjuster	2	
<i>Detail Description: 2012 &amp; Newer:</i>					
22	<b>R106-5363</b>	106-5363	Shaft - Adjusting - Bed Bar - Stainless	2	
<i>Tech Note: 2011 Only:</i>					
23	<b>R99-2097</b>	99-2097	Detent - Bed Bar Adjuster	2	
24	<b>R3296-48</b>	119-4039, 32146-7, 3296-34, 3296-48	Locknut - 7/16-14 ESNA	2	
<i>Tech Note: 2012 &amp; Newer:</i>					
24	<b>R33025-00</b>	32025-00, 33025-00	Locknut - 10mm x 1.5 Jam	2	
<i>Tech Note: 2011 Only:</i>					
25	<b>R120-5120</b>	120-5120	Spring - Compression	2	
<i>Tech Note: 2012 &amp; Newer:</i>					

All original equipment manufacturers names and part numbers are used for identification purposes only, and we are in no way implying that our products are original equipment parts. Prices subject to change without notice.



## Replaces Toro Reelmaster 7000-D Parts

27in Cutting Unit - Models 03710 & 03711  
Reel & Bedknife



Item No	R&R Part No.	OEM Part No.	Description	Qty Req	Order Quantity
25	<b>R99-3755</b>	99-3755	Spring - Bed Bar Adjusting	2	
<i>Tech Note: 2011 Only:</i>					
26	<b>R114-9396</b>	114-9396, 119-4067	Bolt - Hex HD 5/16-18 x 3/8	2	
27	<b>R110-1706</b>	110-1706	Deflector	6	
28	<b>R112-8944-01</b>	112-8944-01	Rear Grass Shield Assy - 27 in Units	1	
29	<b>R112-8942</b>	112-8942	Front Grass Shield Assy - 27 in Units	1	
30	<b>R115-7039</b>	115-7039	Screw - Adjuster - Bedbar	2	
<i>Tech Note: 2012 &amp; Newer:</i>					
30	<b>R99-2096</b>	99-2096	Screw - Bed Bar Adjustment - M10 Thrd 1 End	2	
<i>Tech Note: 2011 Only:</i>					
31	<b>R3296-33</b>	3296-33	Locknut - 5/8-18 ESNA Jam	2	
<i>Tech Note: 2012 &amp; Newer:</i>					
33	<b>R110-4069</b>	110-4069	Bracket	1	
34	<b>R3231-25</b>	01-173-0610, 30-9970, 3231-25, 3231-3, 900064P	Bolt - Carriage 3/8-16 x 1-1/4	4	
35	<b>R104-8301</b>	104-8301, 104-9301, 109-6658, 133-7570	Locknut - 3/8-16 Nylon Flanged	5	
36	<b>R87-7270-01</b>	87-7270	Washer - Flat 1/2	1	
37	<b>R99-8662</b>	99-8662	Tube - Spring	1	

All original equipment manufacturers names and part numbers are used for identification purposes only, and we are in no way implying that our products are original equipment parts. Prices subject to change without notice.



## Replaces Toro Reelmaster 7000-D Parts

27in Cutting Unit - Models 03710 & 03711

Reel & Bedknife



Item No	R&R Part No.	OEM Part No.	Description	Qty Req	Order Quantity
38	<b>R104-3396</b>	104-3396	Bolt - Hex HD 3/8-16 x 2-1/4	1	
39	<b>R110-4058</b>	110-4058	Bracket - Chain	1	
40	<b>R92-2601</b>	92-2601	Snap Ring	2	
41	<b>R107-4028</b>	105-6757, 107-4028	Seal - Grease	2	
42	<b>R93-2489</b>	93-2489	Bearing - Reel	2	
43	<b>R107-2954</b>	107-2954	Nut - Bearing Adjuster	1	
44	<b>R112-6967</b>	112-6967	O-Ring	2	
45	<b>R302-5</b>	21-6010, 302-11, 302-37, 302-47, 302-5, 302-57, 302-58, 302-6, 31-0300, 32-9660, 60-0800, 62-3880, 92-4181	Fitting - Grease	2	
46	<b>R106-5335</b>	106-5335	Wave Washer - Reel Adjusting	2	
<i>Tech Note: 2011 Only:</i>					
47	<b>R107-4026</b>	107-4026	Bolt - Hex Tap 3/8-16 x 3-3/4	2	
48	<b>R3231-4</b>	01-157-0440, 01-173-0612, 3231-4	Bolt - Carriage 3/8-16 x 1-1/2	2	
49	<b>R445722</b>	30-8980, 32128-2, 32128-20, 32128-20	Nut - Serrated Washer	2	

All original equipment manufacturers names and part numbers are used for identification purposes only, and we are in no way implying that our products are original equipment parts. Prices subject to change without notice.





## Replaces Toro Reelmaster 7000-D Parts

27in Cutting Unit - Models 03710 & 03711

Reel & Bedknife



Item No	R&R Part No.	OEM Part No.	Description	Qty Req	Order Quantity
50	<b>R112-7451</b>	100-9429, 112-7451	Bolt - Hex Tap 3/8-16 x 2-3/4	2	
<i>Tech Note: Use w/High HOC Bracket Only:</i>					
51	<b>R443818</b>	01-191-0813, 3218-18, 3218-5	Nut - 1/2-13 Hex Jam Zinc	2	
53	<b>R322-16</b>	322-16, Apr-00	Bolt - Hex HD 5/16-18 x 1-1/8	2	
54	<b>R92-2762</b>	92-2762	Pin - Snap	1	
55	<b>R108-0015</b>	108-0015	Washer - Flat	2	
<i>Tech Note: 2012 &amp; Newer:</i>					
56	<b>R56-9520</b>	56-9520	Bushing - Nyliner	2	
57	<b>R61-1950</b>	61-1950	Washer - Nylon - Bed Bar	2	
59	<b>R453017</b>	01-166-0050, 01-166-0240, 01-166-0800, 24-13-AD, 24-14-AD, 32-8110, 3256-26, 3256-6, 453017, 69-8980, 87-7270	Washer - Flat 1/2	2	

All original equipment manufacturers names and part numbers are used for identification purposes only, and we are in no way implying that our products are original equipment parts. Prices subject to change without notice.



## Replaces Toro Reelmaster 7000-D Parts

27in Cutting Unit - Models 03710 & 03711

Reel & Bedknife



Item No	R&R Part No.	OEM Part No.	Description	Qty Req	Order Quantity
61	R453011	01-166-0100, 01-166-0120, 01-166-0270, 01-166-0500, 01-166-0600, 01-166-0620, 132-4593, 2356-3, 237-12, 24-10-AD, 24-11-AD, 24-11-BD, 24-12-AD, 24-12-BD, 30-9310, 32-8190, 3256-24, 3256-3, 3256-36, 3256-4, 453011, 47-9950, 48-9220, 513458, 7-0052	Washer - Flat 3/8 SAE Y/Zinc	4	
64	R120-0404	120-0404	Bracket- High HOC - LH	1	
<i>Detail Description: Fits 2011 &amp; Newer:</i>					
65	R120-0405	120-0405	Bracket - High HOC - RH	1	
<i>Detail Description: Fits 2011 &amp; Newer:</i>					
66	R117-3752	117-3752	Tube- Support - 27 in Units	1	
67	R125-2796	125-2796	Bracket- Front HOC	2	
<i>Tech Note: Ser # 313000001-316999999:</i>					
<i>Detail Description: Fits 2013 &amp; Newer:</i>					
67	R107-2952	107-2952	Bracket - Front Roller	2	
<i>Tech Note: Ser# 11000001-312999999:</i>					

All original equipment manufacturers names and part numbers are used for identification purposes only, and we are in no way implying that our products are original equipment parts. Prices subject to change without notice.



## Replaces Toro Reelmaster 7000-D Parts

27in Cutting Unit - Models 03710 & 03711

Reel & Bedknife



Item No	R&R Part No.	OEM Part No.	Description	Qty Req	Order Quantity
69	<b>R119-0614-01</b>	119-0614-01	Weight	1	
70	<b>R119-1603</b>	119-1603	Spacer - Pivot	2	
71	<b>R119-4275</b>	119-4275	Spring - Compression	1	
73	<b>R106-9623</b>	106-9623	Bolt - Bedbar	2	
74	<b>R106-9618</b>	106-9618	Bushing - Rubber	2	
75	<b>R119-4151</b>	119-4151	Screw - Bedknife 5/16-18 x 17/32	10	
75	<b>R150476</b>	3-3816, 3-6462, 57-4910	Screw - Bedknife 5/16-18 x 5/8	10	
76	<b>R115-2007</b>	107-7437, 115-2007	Rod - Spring	1	
77	<b>R32128-43</b>	30-8990, 32128-43, 3290-357	Nut - Flanged Whiz - 3/8-16	7	
77	<b>R3296-39</b>	32127-25, 32128-36, 3290-357, 3296-17, 3296-22, 3296-39, 915663P, 99-7443	Locknut - 3/8-16 Nylon	7	
78	<b>R108-4279</b>	108-4279	Spacer - Frame	2	
79	<b>R93-2877</b>	93-2877	Bushing - Flanged	2	
80	<b>R67-9410</b>	67-9410	Washer - Clevis Pin	2	
81	<b>R107-2979</b>	107-2979	Bolt - Shoulder	6	
82	<b>R3230-26</b>	3230-26	Screw - Carriage 5/16-18 x 3	4	
83	<b>R106-3924</b>	106-3924	Bracket - Rear Roller	2	

All original equipment manufacturers names and part numbers are used for identification purposes only, and we are in no way implying that our products are original equipment parts. Prices subject to change without notice.



## Replaces Toro Reelmaster 7000-D Parts

27in Cutting Unit - Models 03710 & 03711

Reel & Bedknife



Item No	R&R Part No.	OEM Part No.	Description	Qty Req	Order Quantity
84	<b>R104-8300</b>	104-8300, 104-8300 , 119-4041	Locknut - 5/16-18 Flanged Y/Zinc	4	
85	<b>R94-6936</b>	94-6936, 94-9236	Washer - Hardened - 5/16 SAE	4	
86	<b>R119-0626</b>	119-0626	Shim - Roller - 1/4 in - Slotted	12	
87	<b>R107-7400</b>	107-7400	Pin - Lynch	1	
88	<b>R93-6688</b>	93-6688	Decal - Warning	1	
89	<b>R110-4088-03</b>	110-4088-03, 119-8010-03	Kickstand	1	
90	<b>R107-7773</b>	107-7773	Bolt - Soc HD Cap 5/16-18 x 2-1/2	1	
91	<b>R3256-74</b>	3256-74	Washer - Flat	1	
92	<b>R322-14</b>	01-150-0830, 01-178-0524, 30-8900, 322-14	Bolt - Hex HD 5/16-18 x 3 GR5	1	
93	<b>R3234-7</b>	3234-7	Bolt - Hex Washer HD 5/16-18 x 5/8	4	
94	<b>R94-2703</b>	94-2703	Plug - Plastic Spindle Housing	1	
95	<b>R3234-19</b>	3234-19	Bolt - Hex Washer 3/8-16x1-3/4	2	
96	<b>R101526</b>	01-150-0970, 01-178-0620, 20-53-AGD, 321-11, 3224-8, 323-11, 323-12, 323-31, 323-4, 323-47	Bolt - Hex HD 3/8-16 x 2-1/2 GR5	2	

All original equipment manufacturers names and part numbers are used for identification purposes only, and we are in no way implying that our products are original equipment parts. Prices subject to change without notice.