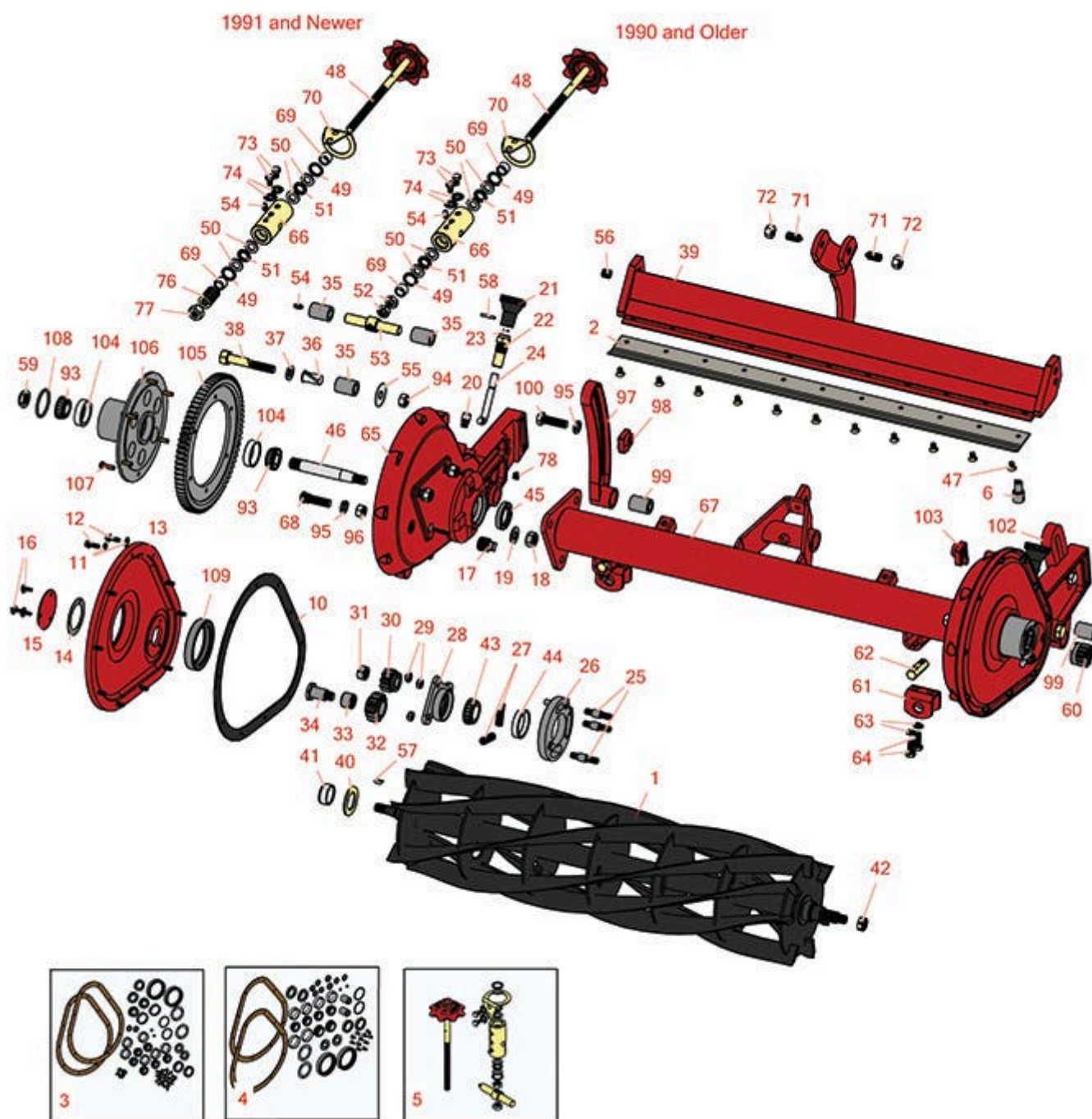




# Replaces Toro Reelmaster Fairway Parts

Reel & Bedknife



All original equipment manufacturers names and part numbers are used for identification purposes only, and we are in no way implying that our products are original equipment parts. Prices subject to change without notice.



# Replaces Toro Reelmaster Fairway Parts

Reel & Bedknife



Item No	R&R Part No.	OEM Part No.	Description	Qty Req	Order Quantity
---------	--------------	--------------	-------------	---------	----------------

## R&R Reels, Lifetime Guaranteed

1	<b>R11-6869</b>	11-6869	Reel - 5 Blade	1
---	-----------------	---------	----------------	---

*Detail Description: R&R Reel blades are manufactured from high carbon-boron alloy steel and then hardened to RC46-49 to match the temper of our bedknives and original equipment bedknives. All R&R Reels are cylindrically ground on bearing surfaces and then relief ground. Reels are then precision computer balanced for extended bearing and reel life. R&R Products Reels are guaranteed against defects in material and workmanship for the life of the reel under normal use.:*

1	<b>R11-6879</b>	11-6879	Reel - 7 Blade	1
---	-----------------	---------	----------------	---

*Detail Description: R&R Reel blades are manufactured from high carbon-boron alloy steel and then hardened to RC46-49 to match the temper of our bedknives and original equipment bedknives. All R&R Reels are cylindrically ground on bearing surfaces and then relief ground. Reels are then precision computer balanced for extended bearing and reel life. R&R Products Reels are guaranteed against defects in material and workmanship for the life of the reel under normal use.:*

1	<b>R11-5119</b>	11-5119, 47-4220	Reel - 11 Blade	1
---	-----------------	---------------------	-----------------	---

*Detail Description: R&R Reel blades are manufactured from high carbon-boron alloy steel and then hardened to RC46-49 to match the temper of our bedknives and original equipment bedknives. All R&R Reels are cylindrically ground on bearing surfaces and then relief ground. Reels are then precision computer balanced for extended bearing and reel life. R&R Products Reels are guaranteed against defects in material and workmanship for the life of the reel under normal use.:*

## R&R Bedknives, Lifetime Guaranteed

2	<b>R150458</b>	47-6680	Bedknife - Low Cut	1
---	----------------	---------	--------------------	---

*Detail Description: R&R Bedknives are manufactured from high carbon-boron alloy steel and then hardened to RC46-49 to match the temper of our reel blades and original equipment reels. Bedknives are surface ground on the top and front edge and straightened three times before being packaged with oil for rust prevention. All R&R Bedknives now have an increased front edge grind for added life. All R&R Bedknives are guaranteed against defects in material and workmanship under normal use for the life of the part.:*

2	<b>R49-7660</b>	49-7660	Bedknife - High Cut	1
---	-----------------	---------	---------------------	---

All original equipment manufacturers names and part numbers are used for identification purposes only, and we are in no way implying that our products are original equipment parts. Prices subject to change without notice.



# Replaces Toro Reelmaster Fairway Parts

## Reel & Bedknife



Item No	R&R Part No.	OEM Part No.	Description	Qty Req	Order Quantity
---------	--------------	--------------	-------------	---------	----------------

*Detail Description:* R&R Bedknives are manufactured from high carbon-boron alloy steel and then hardened to RC46-49 to match the temper of our reel blades and original equipment reels. Bedknives are surface ground on the top and front edge and straightened three times before being packaged with oil for rust prevention. All R&R Bedknives now have an increased front edge grind for added life. All R&R Bedknives are guaranteed against defects in material and workmanship under normal use for the life of the part.:

### Overhaul Kits & Service Tools

3	<b>R255-200</b>		Overhaul Kit - Cutting Unit	0
---	-----------------	--	-----------------------------	---

*Tech Note:* Includes 20 ea.: R11-9760 Screws, R3254-17 Lockwashers; 6 ea.: R11-8960 Screws, R254-78 Bearings, R254-79 Bearing Cups; 2 ea.: R237-21 O-rings, R237-38 O-rings, R253-101 Seals, R253-117 Seals, R253-122 Seals, R253-146 Seals, R254... <Click Part# for more>:

*Detail Description:* Includes 20 ea.: R11-9760 Screws, R3254-17 Lockwashers; 6 ea.: R11-8960 Screws, R254-78 Bearings, R254-79 Bearing Cups; 2 ea.: R237-21 O-rings, R237-38 O-rings, R253-101 Seals, R253-117 Seals, R253-122 Seals, R253-146 Seals, R254-72 Bearing Cups, R254-94 Bearings, R3-5002 Cork Gaskets, R47-5640 Spacers, R5-1458 Gaskets:

4	<b>R13-3629</b>	13-3629	Overhaul Kit - Cutting Unit	0
---	-----------------	---------	-----------------------------	---

*Tech Note:* Includes 11 ea.: R150476 Screws; 4 ea.: R254-78 Bearings, R254-79 Bearing Cups, R257-5 Thrust Washers; 2 ea.: R19-9750 Bushings, R237-21 O-rings, R237-38 O-rings, R253-101 Seals, R253-117 Seals, R253-122 Seals, R253-146 Seals, R2... <Click Part# for more>:

*Detail Description:* Includes 11 ea.: R150476 Screws; 4 ea.: R254-78 Bearings, R254-79 Bearing Cups, R257-5 Thrust Washers; 2 ea.: R19-9750 Bushings, R237-21 O-rings, R237-38 O-rings, R253-101 Seals, R253-117 Seals, R253-122 Seals, R253-146 Seals, R254-72 Bearing Cups, R254-94 Bearings, R257-6 Thrust Washers, R3-5002 Gaskets, R47-5640 Spacers, & R5-1458 Gaskets:

5	<b>R255-201</b>		Overhaul Kit - Micro Adjustment	0
---	-----------------	--	---------------------------------	---

*Tech Note:* Includes 4 ea.: R257-5 Washers, 2 ea: R19-9750 Bushings, R253-84 Seals, R257-6 Bearings, R322-1 Bolts, R3220-12 Nuts, R3290-244 Washers, R47-4420 Spacers; 1 ea: R47-4300 Handle, R47-4400 Arm, R47-4410 Retainer, R47-4420 Spacer & R47-4510 Shaft:

*Detail Description:* Includes 4 ea.: R257-5 Washers, 2 ea: R19-9750 Bushings, R253-84 Seals, R257-6 Bearings, R322-1 Bolts, R3220-12 Nuts, R3290-244 Washers, R47-4420 Spacers; 1 ea: R47-4300 Handle, R47-4400 Arm, R47-4410 Retainer, R47-4420 Spacer & R47-4510 Shaft:

6	<b>R51-0880</b>	51-0880	Bedknife Screw Driver Tool	0
---	-----------------	---------	----------------------------	---

All original equipment manufacturers names and part numbers are used for identification purposes only, and we are in no way implying that our products are original equipment parts. Prices subject to change without notice.



# Replaces Toro Reelmaster Fairway Parts

Reel & Bedknife



Item No	R&R Part No.	OEM Part No.	Description	Qty Req	Order Quantity
---------	--------------	--------------	-------------	---------	----------------

*Detail Description: Easily install and remove bed knife screws with the help of a ratchet with 3/8" drive. Tool manufactured with hardened alloy steel.:*

## Other Parts Available

10	<b>R3-5002</b>	106-5409, 3-5002, Mar-97	Gasket - Cork Fits Side Case	2	
11	<b>R3254-17</b>	3254-17	Lockwasher - 1/4 Int/Ext Star Z	20	
12	<b>R11-9760</b>	11-9760	Screw - Hex Washer HD.	20	
13	<b>R47-4060</b>	3-5430, 3-5440, 47-4060, 47-4060-01	Cover - Gear Housing	2	
14	<b>R5-1458</b>	106-5408, 5-1458	Gasket - Insp Plate	2	
15	<b>R5-1460</b>	5-1460	Cover - Inspection Plate	2	
16	<b>R11-8960</b>	11-8960	Screw - w/Washer/Neoprene	6	
17	<b>R281-3</b>	281-3, 30-1090, 58-7250	Plug - Pipe 1/2	2	
18	<b>R3219-10</b>	3219-10	Nut - 9/16-18 Hex	2	
19	<b>R3256-15</b>	3256-15	Washer - Flat 9/16 Plain USS	2	
20	<b>R302-14</b>	302-14	Fitting - Relief	2	
21	<b>R5-1464</b>	5-1464, 5-1464-03	Handle - Throwout	2	
22	<b>R3-3892</b>	3-3892, Nov-30	Sleeve - Throwout	2	
23	<b>R237-21</b>	237-21, 327-21	O-Ring	2	

All original equipment manufacturers names and part numbers are used for identification purposes only, and we are in no way implying that our products are original equipment parts. Prices subject to change without notice.



# Replaces Toro Reelmaster Fairway Parts

*Reel & Bedknife*



Item No	R&R Part No.	OEM Part No.	Description	Qty Req	Order Quantity
24	<b>R3-3891</b>	3-3891	Finger - Throwout LH	1	
24	<b>R3-3904</b>	3-3904	Finger - Throwout RH	1	
25	<b>R3-7445</b>	3-7445	Stud	6	
26	<b>R3-4160</b>	3-4160	Ring - Carrier LH	1	
26	<b>R3-4170</b>	3-4170	Ring - Carrier RH	1	
27	<b>R3-3251</b>	3-3251	Spring	4	
28	<b>R47-4470</b>	47-4470	Retainer - Ratchet Ring	1	
28	<b>R47-4480</b>	47-4480	Retainer - Ratchet Ring	1	
29	<b>R3296-6</b>	01-192-0280, 32118-2, 32127-14, 32127-15, 32146-12, 32146-6, 3296-32, 3296-6	Locknut - 3/8-24 ESNA	6	
30	<b>R5-1463</b>	5-1463, 5-1483	Gear - Pinion	1	
31	<b>R3-8386</b>	3-8386	Nut - Lefthand Thread	1	
32	<b>R12-1190</b>	12-1190	Gear - Ratchet	2	
33	<b>R252-6</b>	252-6	Bearing - Pinion Gear	2	
34	<b>R3-9116</b>	3-9116	Stud - Ratchet Gear RH Thrd	1	
34	<b>R3-9117</b>	3-9117	Stud - Ratchet Gear LH Thrd	1	
35	<b>R19-9750</b>	19-9750, 68-7530	Bushing	3	
36	<b>R47-4430</b>	47-4430	Bushing - Flanged	2	
37	<b>R47-5640</b>	47-5640	Spacer - Rubber	2	

All original equipment manufacturers names and part numbers are used for identification purposes only, and we are in no way implying that our products are original equipment parts. Prices subject to change without notice.



# Replaces Toro Reelmaster Fairway Parts

*Reel & Bedknife*



Item No	R&R Part No.	OEM Part No.	Description	Qty Req	Order Quantity
38	<b>R47-4450</b>	47-4450	Bolt - Shoulder	1	
38	<b>R47-4460</b>	47-4460	Bolt - Shoulder Eccentric	1	
39	<b>R47-4080</b>	47-4080, 47-4080-01	Backing Bar - Bed Knife	1	
40	<b>R47-4260</b>	47-4260	Slinger - Grass	2	
41	<b>R47-4250</b>	47-4250	Sleeve - Wear Reel	2	
42	<b>R3296-57</b>	3296-57	Locknut - Nylon Zinc Jam	1	
43	<b>R254-94</b>	1-543509, 254-94, 32-8090, 32-8240, 32-9640, 40440, 62-3330	Tapered Bearing Cone	2	
44	<b>R254-72</b>	01-103-0050, 01-103-0120, 01-103-0140, 1-543508, 254-71, 254-72, 40439, 62-3340, 99-4511	Cup - Bearing	2	
45	<b>R253-146</b>	105-0150, 253-143, 253-146, 253-153	Seal	2	
46	<b>R49-4100</b>	49-4100	Shaft - Stub Axle	2	
47	<b>R150475</b>	3-6462	Screw - Bedknife Stainless 5/16-18 x 5/8	11	

*Detail Description: Pre-Packaged in bags of 50:*

All original equipment manufacturers names and part numbers are used for identification purposes only, and we are in no way implying that our products are original equipment parts. Prices subject to change without notice.



# Replaces Toro Reelmaster Fairway Parts

*Reel & Bedknife*



Item No	R&R Part No.	OEM Part No.	Description	Qty Req	Order Quantity
47	R150476	3-3816, 3-6462, 57-4910	Screw - Bedknife 5/16-18 x 5/8	11	
48	R47-4300	47-4300, 47-4300-01, 47-4310, Aug-00	Handle - Adjusting	1	
49	R253-84	253-84, 7-0044	Seal - Micro Adj.	2	
50	R257-5	257-5	Washer - Thrust	4	
51	R257-6	257-6	Bearing - Thrust	2	
52	R3220-12	3220-12	Nut - 1/2-20 LH Jam Hex	2	
53	R47-4510	47-4510	Shaft - Adjusting	1	
54	R302-5	21-6010, 302-11, 302-37, 302-47, 302-5, 302-57, 302-58, 302-6, 31-0300, 32-9660, 60-0800, 62-3880, 92-4181	Fitting - Grease	2	
55	R47-4440	47-4440	Washer - Nylon	2	
56	R32148-5	32148-5	Insert - Threaded	2	
57	R3257-3	3257-3	Key - Woodruff	1	
58	R3283-1	3283-1	Pin - Drive Lock	2	

All original equipment manufacturers names and part numbers are used for identification purposes only, and we are in no way implying that our products are original equipment parts. Prices subject to change without notice.



# Replaces Toro Reelmaster Fairway Parts

*Reel & Bedknife*



Item No	R&R Part No.	OEM Part No.	Description	Qty Req	Order Quantity
59	R3296-15	116-7306, 32118-5, 32127-23, 32127-47, 3296-15	Locknut - 3/4-16 Nylon Jam	2	
60	R47-4490	47-4490	Gear - Splined Pinion LH	1	
61	R37-3490	37-3490, 37-3490-01	Bracket - Drawbar	2	
62	R47-4530	47-4530	Retainer - Drawbar	2	
63	R3253-21	215-51, 30-8470, 3253-21, Jul-12	Washer - Lock 3/8	2	
64	R323-6	01-150-0010, 01-178-0608, 20-47-AD, 20-47-AGD, 3224-2, 323-6, 49-3510, 908034P, 908332	Bolt - Hex HD 3/8-16 x 1 GR5 YZ	2	
65	R11-5049	11-5049, Nov-19	Case - Gear LH	1	
65	R11-5059	11-5059, Nov-09	Case - Gear RH	1	
66	R47-4410	47-4410, 47-4410-01	Retainer - Adj. Arm w/Zerk	1	
67	R11-5069	11-5069	Tube - Axle	1	
68	R17-2520	17-2520	Stud - Axle	6	
69	R47-4420	47-4420	Spacer - Adj. Sleeve SS	2	
70	R47-4400	47-4400	Arm - Spring	1	

All original equipment manufacturers names and part numbers are used for identification purposes only, and we are in no way implying that our products are original equipment parts. Prices subject to change without notice.





# Replaces Toro Reelmaster Fairway Parts

*Reel & Bedknife*



Item No	R&R Part No.	OEM Part No.	Description	Qty Req	Order Quantity
71	<b>R57-5190</b>	32110-19, 57-5190	Screw - Adjusting	2	
72	<b>R443818</b>	01-191-0813, 3218-18, 3218-5	Nut - 1/2-13 Hex Jam Zinc	2	
73	<b>R322-1</b>	01-178-0504, 20-22-AD, 20-22-AGD, 322-1, 513337	Bolt - Hex HD 5/16-18 x 1/2	2	
74	<b>R3290-244</b>	3290-244	Washer - Lock 5/16 Int-Ext	2	
76	<b>R5-4373</b>	5-4373	Spring	1	
77	<b>R3296-62</b>	3296-62	Locknut - 1/2-20 LH Jam	1	
78	<b>R170714</b>	302-34, 302-39, 62-3520	Fitting - Pressure Relief	1	
93	<b>R254-78</b>	01-102-0060, 01-102-0130, 1-633585, 254-78, 32-7790, 32-9580, 93-4813	Tapered Bearing Cone	4	
94	<b>R3296-19</b>	30-5020, 32118-3, 32127-26, 32127-41, 3296-19, 60-6530	Locknut - 1/2-20	2	
95	<b>R3253-7</b>	01-166-0030, 01-166-0080, 01-166-0290, 01-166-0810, 23-13-GD, 3253-7, 48-9380	Washer - Lock 1/2	6	

All original equipment manufacturers names and part numbers are used for identification purposes only, and we are in no way implying that our products are original equipment parts. Prices subject to change without notice.



# Replaces Toro Reelmaster Fairway Parts

Reel & Bedknife



Item No	R&R Part No.	OEM Part No.	Description	Qty Req	Order Quantity
96	R3219-5	01-188-0820, 22-15-BJD, 22-15-BJKD, 3219-5	Nut - 1/2-20	6	
97	R11-5089	11-5089	Bracket - Roller RH	1	
98	R47-4380	47-4380	Nut - Roller Adj RH	1	
99	R3-4010	3-4010	Bushing	0	
100	R325-7	01-150-0380, 01-178-0814, 3226-3, 325-7, 48-9490	Bolt - 1/2-13 x 1 3/4 Hex HD Gr 5	0	
102	R11-5079	11-5079	Bracket - Roller LH	0	
103	R47-4390	47-4390	Nut - Roller Adj LH	1	
104	R254-79	01-103-0060, 01-103-0130, 1-633584, 252-106, 254-79, 32-7800, 32-9590	Cup - Bearing	4	
<i>Tech Note: Use R254-79M installation mandrel to properly install race.:</i>					
<i>Detail Description: Use R254-79M installation mandrel to properly install race.:</i>					
105	R5-1457	5-1457	Gear - Main	2	
106	R3-4001	3-4001, 95-1828	Hub - Ring Gear with Rivets	2	
107	R3262-3	3262-3	Rivet - Ring Gear Hub	12	
108	R237-38	237-38, 7-1393	O-Ring - Large	2	

All original equipment manufacturers names and part numbers are used for identification purposes only, and we are in no way implying that our products are original equipment parts. Prices subject to change without notice.



# Replaces Toro Reelmaster Fairway Parts

*Reel & Bedknife*



Item No	R&R Part No.	OEM Part No.	Description	Qty Req	Order Quantity
109	R253-101	253-101, 253-13, 253-25, 253-4, 47-4500, 84-8200	Seal - Oil Cover	2	

All original equipment manufacturers names and part numbers are used for identification purposes only, and we are in no way implying that our products are original equipment parts. Prices subject to change without notice.