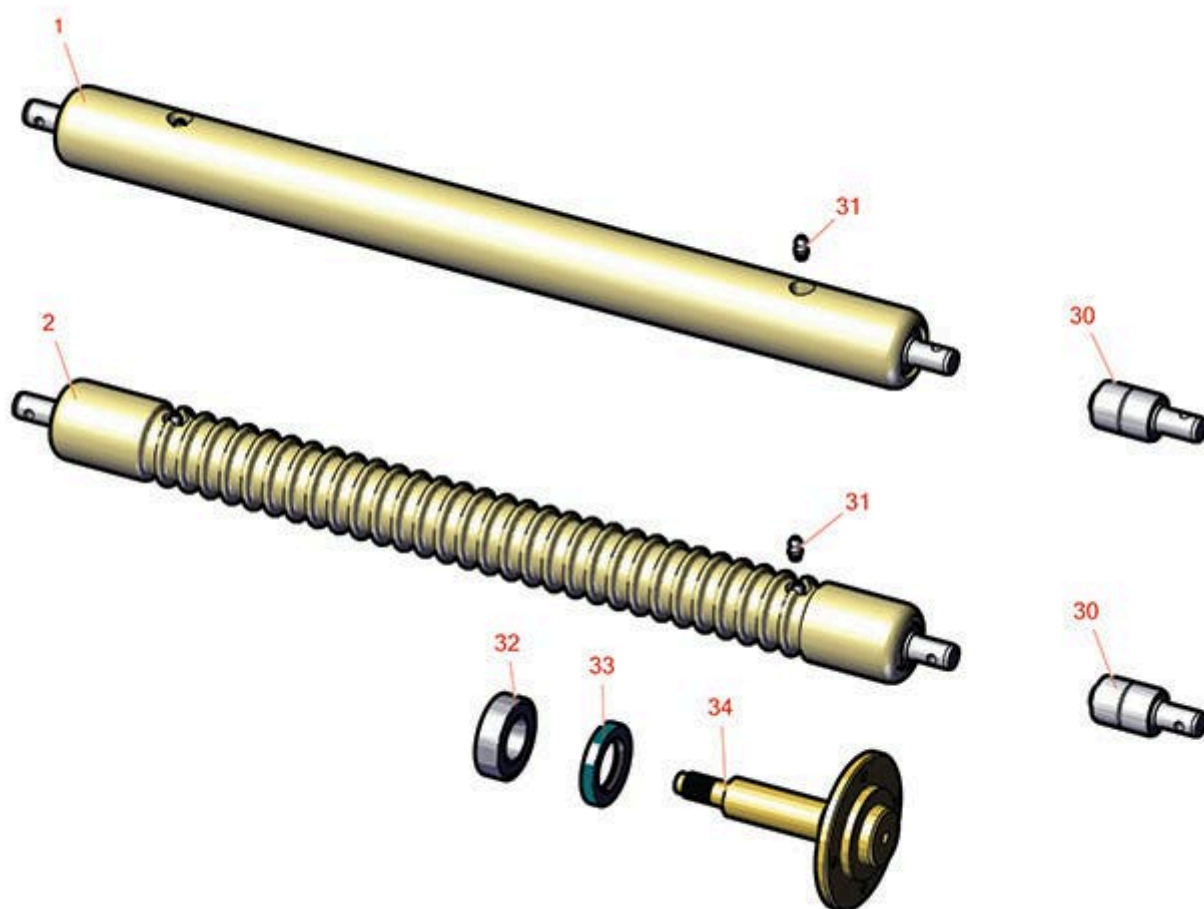




# Replaces John Deere 220C Greens Mower Parts

*Cutting Unit  
Rollers*



All original equipment manufacturers names and part numbers are used for identification purposes only, and we are in no way implying that our products are original equipment parts. Prices subject to change without notice.



# Replaces John Deere 220C Greens Mower Parts

Cutting Unit  
Rollers



Item No	R&R Part No.	OEM Part No.	Description	Qty Req	Order Quantity
---------	--------------	--------------	-------------	---------	----------------

## R&R Rollers

3	RAMT1442	AMT1442, AMT2878	Roller - Smooth Solid Steel	1	
---	----------	---------------------	-----------------------------	---	--

*Detail Description: Machined from solid steel, this heavy weight roller uses greasable "water-pump" style bearings.:*

4	RAMT1443	AMT1443, AMT2879	Roller - Grooved Machined Solid Steel	1	
---	----------	---------------------	---------------------------------------	---	--

*Detail Description: Machined from solid steel, this heavy weight roller uses greasable "water-pump" style bearings. Extended length body.:*

## Other Parts Available

30	RAA35741	AA35741, AET10129, TCA22836	Bearing	2	
----	----------	-----------------------------------	---------	---	--

*Detail Description: 1/4" Side Hole:*

31	R302-5	JD7797, JD7842, JD7844	Fitting - Grease	2	
----	--------	------------------------------	------------------	---	--

32	R345050	AZ20217	Bearing	2	
----	---------	---------	---------	---	--

33	RET10285	ET10285	Seal	2	
----	----------	---------	------	---	--

34	RET11081	ET11081	Spindle - Traction Roller	1	
----	----------	---------	---------------------------	---	--

All original equipment manufacturers names and part numbers are used for identification purposes only, and we are in no way implying that our products are original equipment parts. Prices subject to change without notice.