

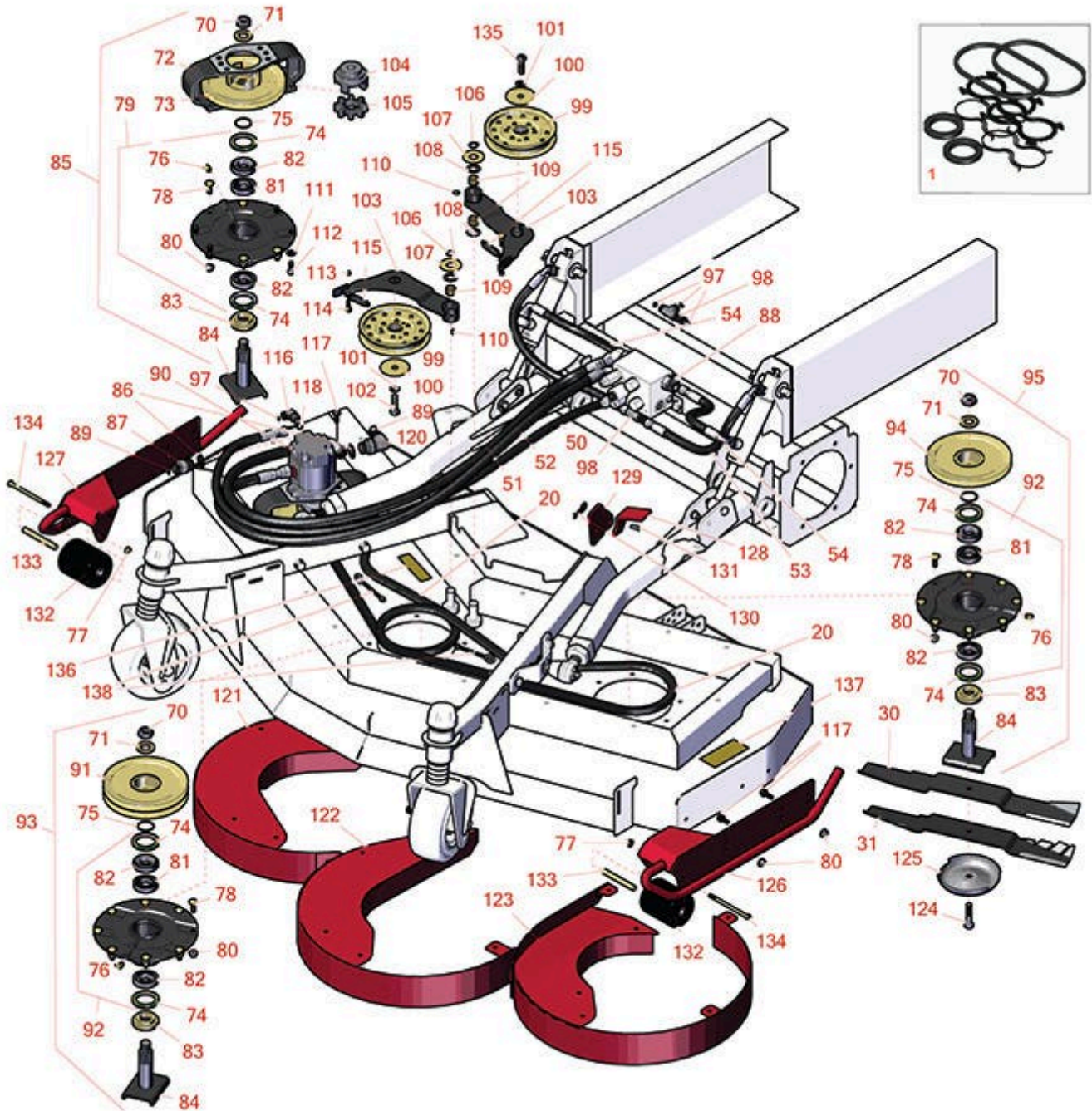


# Replaces Toro Groundsmaster 4010-D

## Parts

Rotary Mower - Model 30607

Front Deck Hydraulics and Spindles



All original equipment manufacturers names and part numbers are used for identification purposes only, and we are in no way implying that our products are original equipment parts. Prices subject to change without notice.



# Replaces Toro Groundsmaster 4010-D Parts

Rotary Mower - Model 30607  
Front Deck Hydraulics and Spindles



Item No	R&R Part No.	OEM Part No.	Description	Qty Req	Order Quantity
1	<b>R114-5620</b>	114-5620	Seal Kit - Fits R127-3694 Hyd Motor	1	
<b>Belts</b>					
20	<b>R55-7660</b>	108-8076	Belt - V Rotary Deck	2	
<b>Rotary Blades Available</b>					
30	<b>R92-5608</b>	92-5608, 92-5608-03	Mower Blade - 21.75 in	3	
31	<b>RRB4045-2102</b>	104-1303, 107-0214, 107-0214-03, 92-5608M	Mower Blade - Mulcher 21.75 x 2.5in x 1/2 Mt Hole	3	
31	<b>R92-5608M</b>	104-1303, 107-0214-03, 92-5608M	Mower Blade - Mulcher 21.75 x 2.5in x 1/2 Mt Hole	0	
<b>Hoses</b>					
50	<b>R112-9126</b>	112-9126	Hydraulic Hose Assy - w/Protective Sleeve	1	
<i>Tech Note: 30410/30412/30448:</i>					
50	<b>R120-8989</b>	120-8989	Hydraulic Hose Assy	1	
<i>Tech Note: 30605/30609:</i>					
51	<b>R104-2260</b>	104-2260	Hydraulic Hose Assy	1	
<i>Tech Note: 30603/30607/30635/30605:</i>					
51	<b>R120-8988</b>	120-8988	Hydraulic Hose Assy	1	
<i>Tech Note: 30605/30609:</i>					
52	<b>R104-2261</b>	104-2261	Hydraulic Hose Assy	1	
<i>Tech Note: 30603/30607/30635/30605:</i>					
52	<b>R120-8987</b>	120-8987	Hydraulic Hose Assy	1	

All original equipment manufacturers names and part numbers are used for identification purposes only, and we are in no way implying that our products are original equipment parts. Prices subject to change without notice.



# Replaces Toro Groundsmaster 4010-D Parts

Rotary Mower - Model 30607  
Front Deck Hydraulics and Spindles



Item No	R&R Part No.	OEM Part No.	Description	Qty Req	Order Quantity
<i>Tech Note: 30605/30609:</i>					
53	<b>R92-7595</b>	92-7595	Hydraulic Hose Assy	2	
<i>Tech Note: 30410/30412/30448:</i>					
54	<b>R104-2234</b>	104-2234	Hydraulic Hose Assy	2	
<b>Other Parts Available</b>					
70	<b>R32127-46</b>	32127-46, 3296-60	Locknut	3	
71	<b>R104-8322</b>	104-8322, 120-5576	Washer - Spindle Shaft Hardened	3	
72	<b>R104-3544</b>	104-3544	Mount - Motor Drive	1	
73	<b>R104-3545</b>	104-3545	Pulley - Drive	1	
74	<b>R253-154</b>	253-154	Seal - Spindle	6	
75	<b>R106-7159</b>	106-7159	O-Ring	3	
76	<b>R302-60</b>	302-60	Zerk - Grease 90 Deg.	3	
77	<b>R104-8300</b>	104-8300, 104-8300 , 119-4041	Locknut - 5/16-18 Flanged Y/Zinc	2	
78	<b>R114-8195</b>	114-8195, R & R ONLY	Bolt- Ribbed Neck	20	
79	<b>R119-4546</b>	104-3552, 119-3552, 119-4546	Spindle Housing Assy	1	
80	<b>R104-8301</b>	104-8301, 104-9301, 109-6658, 133-7570	Locknut - 3/8-16 Nylon Flanged	20	
81	<b>R104-3549</b>	104-3549	Spacer Set - Spindle Bearing	6	

All original equipment manufacturers names and part numbers are used for identification purposes only, and we are in no way implying that our products are original equipment parts. Prices subject to change without notice.



# Replaces Toro Groundsmaster 4010-D Parts

Rotary Mower - Model 30607  
Front Deck Hydraulics and Spindles



Item No	R&R Part No.	OEM Part No.	Description	Qty Req	Order Quantity
82	<b>R110-8297</b>	110-8297, 26-1830	Bearing Set w/Retaining Rings - Spindle	3	
83	<b>R92-9800</b>	69-6950, 69-6980, 92-9800	Spacer - Spindle	3	
84	<b>R104-3554</b>	104-3554	Shaft - Spindle Assy.	3	
85	<b>R139-1035</b>	104-3529, 119-4547, 139-1035	Drivin Spindle Assy	1	
86	<b>R237-81</b>	237-81, 237.81, 327-81	O-Ring	2	
<i>Tech Note: 30410/30412/30448:</i>					
87	<b>R340-8</b>	340-8	Adapter	1	
<i>Tech Note: 30410/30412/30448:</i>					
88	<b>R340-9</b>	340-9	Fitting - Straight Connector	2	
<i>Tech Note: 30605/30609:</i>					
89	<b>R237-65</b>	237-65, 237.65	O-Ring	2	
<i>Tech Note: 30410/30412/30448:</i>					
90	<b>R127-3694</b>	127-3694	Hydraulic Motor	3	
<i>Tech Note: 314000001-314999999 and Newer:</i>					
90	<b>R99-5489</b>	99-5489	Hydraulic Motor	3	
<i>Tech Note: 313000001-313999999:</i>					
91	<b>R104-3547</b>	104-3547	Pulley - Double Driven	1	
92	<b>R119-4775</b>	119-4775	Spindle Housing Assy	2	

All original equipment manufacturers names and part numbers are used for identification purposes only, and we are in no way implying that our products are original equipment parts. Prices subject to change without notice.



# Replaces Toro Groundsmaster 4010-D Parts

Rotary Mower - Model 30607  
Front Deck Hydraulics and Spindles



Item No	R&R Part No.	OEM Part No.	Description	Qty Req	Order Quantity
93	<b>R119-4548</b>	104-3530, 119-4548, 139-1037	Double Driven Spindle Assy	1	
94	<b>R104-3548</b>	104-3548	Pulley - Higher Driven	1	
95	<b>R119-4549</b>	104-3531, 119-4549, 139-1038	High Driven Spindle Assy	1	
97	<b>R237-22</b>	107-8844, 237-22, 237-78	O-Ring	7	
<i>Tech Note: 30410/30412/30448:</i>					
98	<b>R340-68</b>	340-120, 340-68	Fitting - Tee - Bulkhead	2	
<i>Tech Note: 30410/30412/30448:</i>					
99	<b>R110-9596</b>	110-9596, 132-9421	Pulley- Flat Idler	2	
100	<b>R100-3102</b>	100-3102	Washer-Flat	2	
101	<b>R3253-7</b>	01-166-0030, 01-166-0080, 01-166-0290, 01-166-0810, 23-13-GD, 3253-7, 48-9380	Washer - Lock 1/2	2	
102	<b>R325-7</b>	01-150-0380, 01-178-0814, 3226-3, 325-7, 48-9490	Bolt - 1/2-13 x 1 3/4 Hex HD Gr 5	2	
103	<b>R110-6128</b>	110-6128	Idler Arm Assy	2	
104	<b>R104-3541</b>	104-3541	Hub - Drive	1	
105	<b>R104-3542</b>	104-3542	Spider	1	

All original equipment manufacturers names and part numbers are used for identification purposes only, and we are in no way implying that our products are original equipment parts. Prices subject to change without notice.



# Replaces Toro Groundsmaster 4010-D Parts

*Rotary Mower - Model 30607  
Front Deck Hydraulics and Spindles*



Item No	R&R Part No.	OEM Part No.	Description	Qty Req	Order Quantity
106	<b>R458013</b>	30-0580, 32120-72, 458013, 93-2525, 936125	Ring - Retaining	2	
107	<b>R70-1160</b>	70-1160	Washer	2	
108	<b>R3-6498</b>	3--6498, 3-6498, 47-8270	Washer - Thrust	4	
109	<b>R256-76</b>	256-76	Bushing	4	
110	<b>R302-5</b>	21-6010, 302-11, 302-37, 302-47, 302-5, 302-57, 302-58, 302-6, 31-0300, 32-9660, 60-0800, 62-3880, 92-4181	Fitting - Grease	2	

All original equipment manufacturers names and part numbers are used for identification purposes only, and we are in no way implying that our products are original equipment parts. Prices subject to change without notice.



# Replaces Toro Groundsmaster 4010-D Parts



Rotary Mower - Model 30607  
Front Deck Hydraulics and Spindles

Item No	R&R Part No.	OEM Part No.	Description	Qty Req	Order Quantity
111	<b>R453011</b>	01-166-0100, 01-166-0120, 01-166-0270, 01-166-0500, 01-166-0600, 01-166-0620, 132-4593, 2356-3, 237-12, 24-10-AD, 24-11-AD, 24-11-BD, 24-12-AD, 24-12-BD, 30-9310, 32-8190, 3256-24, 3256-3, 3256-36, 3256-4, 453011, 47-9950, 48-9220, 513458, 7-0052	Washer - Flat 3/8 SAE Y/Zinc	4	
112	<b>R323-6</b>	01-150-0010, 01-178-0608, 20-47-AD, 20-47-AGD, 3224-2, 323-6, 49-3510, 908034P, 908332	Bolt - Hex HD 3/8-16 x 1 GR5 YZ	4	
113	<b>R3296-56</b>	3296-56	Nut - Lock - 1/4-20 ESNA Jam	2	
114	<b>R104-0858</b>	104-0858	Bolt - Shoulder	2	
115	<b>R107938</b>	107938	Spring - Extension	2	
116	<b>R340-77</b>	340-100, 340-77, 95-7889	Hydraulic Fitting	1	

All original equipment manufacturers names and part numbers are used for identification purposes only, and we are in no way implying that our products are original equipment parts. Prices subject to change without notice.





# Replaces Toro Groundsmaster 4010-D Parts

Rotary Mower - Model 30607  
Front Deck Hydraulics and Spindles



Item No	R&R Part No.	OEM Part No.	Description	Qty Req	Order Quantity
117	<b>R3234-42</b>	3234-42	Bolt - 3/8-16 x 1 Hx HD Fl	2	
118	<b>R237-42</b>	237-42, 31-4160	O-Ring	1	
120	<b>R340-139</b>	340-139	Hydraulic Fitting - 90 Deg	1	
<i>Tech Note: 30410/30412/30448:</i>					
121	<b>R104-2201-01</b>	104-2201-01	Chamber Assy - RH	1	
122	<b>R104-2200-01</b>	104-2200-01	Chamber Assy - Center	1	
123	<b>R104-2202-01</b>	104-2202-01	Chamber Assy - LH	1	
124	<b>R92-5816</b>	92-5816	Bolt - Hex HD 1/2-20 x 2-1/4	3	
125	<b>R72-9361</b>	27-1000, 27-1001, 72-9360, 72-9361	Cup - Anti-Scalp	3	
126	<b>R100-5612-01</b>	100-5612-01	Skid Assy - LH	1	
127	<b>R100-5605-01</b>	100-5605-01	Skid Assy - RH	1	
128	<b>R106-2032-01</b>	106-2032-01	Latch - Deck	1	
129	<b>R106-2033-01</b>	106-2033-01	Plate - Latch	1	
130	<b>R3290-467</b>	3290-467	Pin-Hair	1	
131	<b>R283-62</b>	283-62	Pin - Clevis 5/16 x 3/4	1	
132	<b>R93-4803</b>	93-4803	Roller - Deck	2	
133	<b>R105-4549</b>	105-4549	Spacer - Deck Roller	2	
134	<b>R322-29</b>	322-29	Bolt - Hex HD 5/16-18 x 5 GR5	2	
135	<b>R100-6578</b>	100-6578	Decal- Danger	4	
136	<b>R108-1993</b>	108-1993	Screw - 1/2-13 x 1 3/4 Button Socket Head Cap	1	

All original equipment manufacturers names and part numbers are used for identification purposes only, and we are in no way implying that our products are original equipment parts. Prices subject to change without notice.





# Replaces Toro Groundsmaster 4010-D Parts



*Rotary Mower - Model 30607  
Front Deck Hydraulics and Spindles*

Item No	R&R Part No.	OEM Part No.	Description	Qty Req	Order Quantity
137	<b>R93-7818</b>	93-7818	Decal - Blade Torque	2	
138	<b>R68-0090</b>	68-0090	Screw - Adjusting	2	

All original equipment manufacturers names and part numbers are used for identification purposes only, and we are in no way implying that our products are original equipment parts. Prices subject to change without notice.