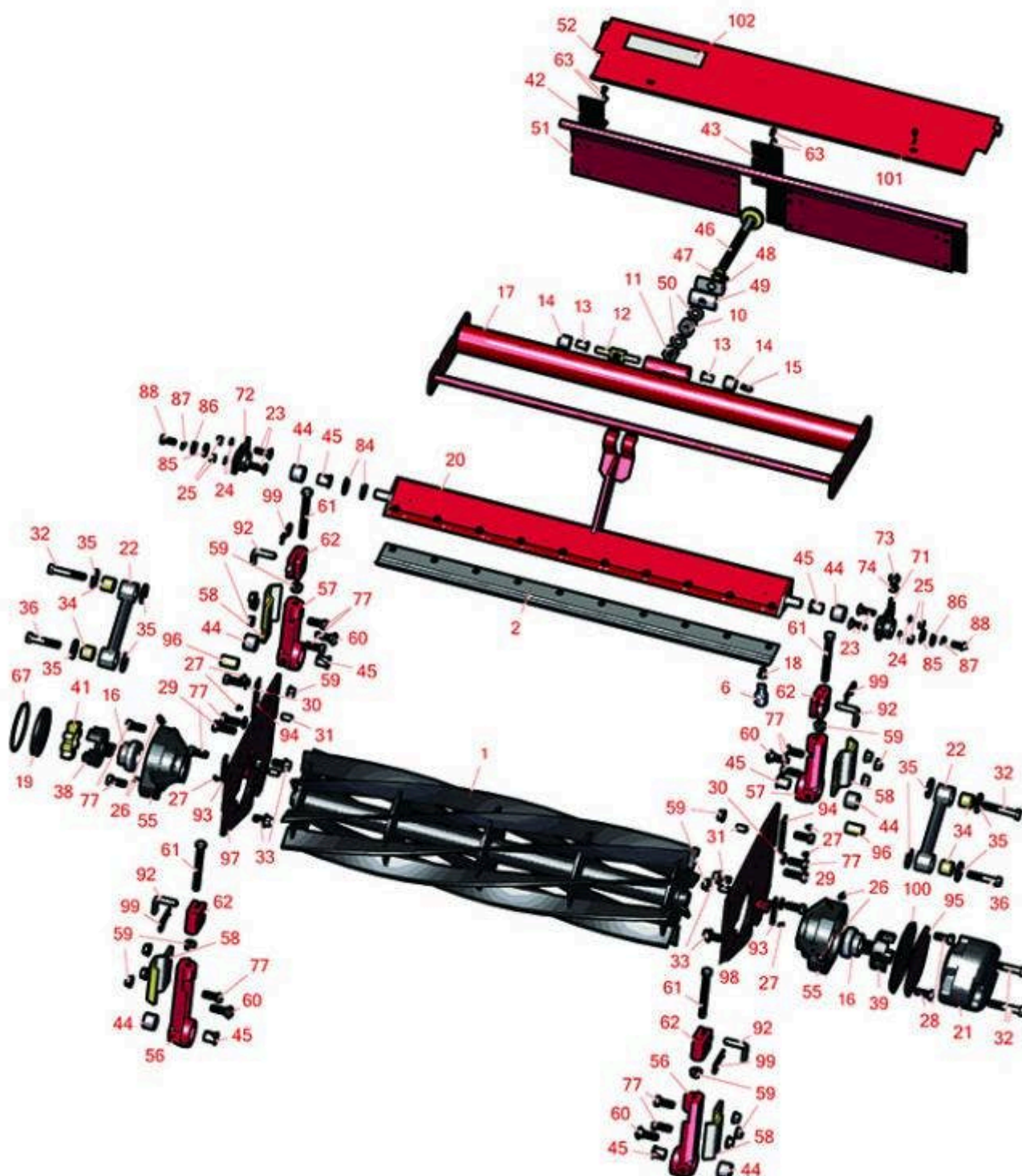




## Replaces Toro Reelmaster 2600-D Parts

27in Cutting Unit - Models 03210 & 03211  
Reel & Bedknife



All original equipment manufacturers names and part numbers are used for identification purposes only, and we are in no way implying that our products are original equipment parts. Prices subject to change without notice.



## Replaces Toro Reelmaster 2600-D Parts

27in Cutting Unit - Models 03210 & 03211

Reel & Bedknife



Item No	R&R Part No.	OEM Part No.	Description	Qty Req	Order Quantity
---------	--------------	--------------	-------------	---------	----------------

### R&R Reels, Lifetime Guaranteed

1	<b>R94-3631</b>	93-8839, 94-3631, 99-3468, 99-3482	Reel - 5 Blade Fits 27x7	1	
---	-----------------	---	--------------------------	---	--

*Detail Description: R&R Reel blades are expertly crafted from premium high carbon-boron alloy steel, heat-treated to perfectly complement both R&R and OEM bedknives. Each reel undergoes precision cylindrical grinding on bearing surfaces, followed by relief grinding for optimal performance. Advanced computer balancing ensures extended reel and bearing life. Backed by our lifetime guarantee against defects in materials and craftsmanship under normal use, R&R Reels deliver unmatched durability and cutting precision you can trust.:*

### R&R Bedknives, Lifetime Guaranteed

2	<b>R62-5180</b>	105-6785, 61-0800, 62-5180	Bedknife - Lowcut - 27 in Unit	1	
---	-----------------	----------------------------------	--------------------------------	---	--

*Detail Description: R&R Bedknives are manufactured from high carbon-boron alloy steel and then hardened to RC46-49 to match the temper of our reel blades and original equipment reels. Bedknives are surface ground on the top and front edge and straightened three times before being packaged with oil for rust prevention. All R&R Bedknives now have an increased front edge grind for added life. All R&R Bedknives are guaranteed against defects in material and workmanship under normal use for the life of the part.:*

2	<b>R104-1380</b>	104-1380	Bedknife - Highcut - 27 in Unit	1	
---	------------------	----------	---------------------------------	---	--

*Detail Description: R&R Bedknives are manufactured from high carbon-boron alloy steel and then hardened to RC46-49 to match the temper of our reel blades and original equipment reels. Bedknives are surface ground on the top and front edge and straightened three times before being packaged with oil for rust prevention. All R&R Bedknives now have an increased front edge grind for added life. All R&R Bedknives are guaranteed against defects in material and workmanship under normal use for the life of the part.:*

2	<b>R94-5079</b>	104-1381, 94-4974, 94-5079	Bedknife - Lowcut - 32 in Unit	1	
---	-----------------	----------------------------------	--------------------------------	---	--

*Detail Description: R&R Bedknives are manufactured from high carbon-boron alloy steel and then hardened to RC46-49 to match the temper of our reel blades and original equipment reels. Bedknives are surface ground on the top and front edge and straightened three times before being packaged with oil for rust prevention. All R&R Bedknives now have an increased front edge grind for added life. All R&R Bedknives are guaranteed against defects in material and workmanship under normal use for the life of the part.:*

All original equipment manufacturers names and part numbers are used for identification purposes only, and we are in no way implying that our products are original equipment parts. Prices subject to change without notice.



## Replaces Toro Reelmaster 2600-D Parts

27in Cutting Unit - Models 03210 & 03211  
Reel & Bedknife



Item No	R&R Part No.	OEM Part No.	Description	Qty Req	Order Quantity
---------	--------------	--------------	-------------	---------	----------------

### R&R Razor Tool Steel Bedknives, Lifetime Guaranteed

2	<b>R112-8910</b>	112-8910	Bedknife - Razor Tool Steel - 27 High Cut	1	
---	------------------	----------	---	---	--

*Detail Description: R&R Razor bedknives are manufactured from premium alloy tool steel steel and then hardened to RC48-51 to match the temper of our Razor reel blades and original equipment premium series reels. Bedknives are surface ground on the top and front edge and specially packaged for rust prevention. All R&R Bedknives now have an increased front edge grind for added life. All R&R Bedknives are guaranteed against defects in material and workmanship under normal use for the life of the part. You can expect up to double the life over standard bedknives.:*

2	<b>R112-8956</b>	112-8956	Bedknife - Razor Tool Steel - 32 x 3/8 Fairway	1	
---	------------------	----------	--	---	--

*Detail Description: R&R Razor bedknives are manufactured from premium alloy tool steel steel and then hardened to RC48-51 to match the temper of our Razor reel blades and original equipment premium series reels. Bedknives are surface ground on the top and front edge and specially packaged for rust prevention. All R&R Bedknives now have an increased front edge grind for added life. All R&R Bedknives are guaranteed against defects in material and workmanship under normal use for the life of the part. You can expect up to double the life over standard bedknives.:*

### Service Tools

6	<b>R51-0880</b>	51-0880	Bedknife Screw Driver Tool	1	
---	-----------------	---------	----------------------------	---	--

*Detail Description: Easily install and remove bed knife screws with the help of a ratchet with 3/8" drive. Tool manufactured with hardened alloy steel.:*

### Other Parts Available

10	<b>R57-5270</b>	57-5270	Spring - Adjusting Handle	1	
----	-----------------	---------	---------------------------	---	--

11	<b>R3296-62</b>	3296-62	Locknut - 1/2-20 LH Jam	1	
----	-----------------	---------	-------------------------	---	--

12	<b>R57-5260</b>	107-7409, 57-5260	Pivot - 1/2-20 - Bed Bar	1	
----	-----------------	----------------------	--------------------------	---	--

13	<b>R52-2890</b>	52-2890	Bushing - Flanged	2	
----	-----------------	---------	-------------------	---	--

14	<b>R62-5510</b>	52-2870, 62-5510	Bushing	2	
----	-----------------	---------------------	---------	---	--

All original equipment manufacturers names and part numbers are used for identification purposes only, and we are in no way implying that our products are original equipment parts. Prices subject to change without notice.



## Replaces Toro Reelmaster 2600-D Parts

27in Cutting Unit - Models 03210 & 03211

Reel & Bedknife



Item No	R&R Part No.	OEM Part No.	Description	Qty Req	Order Quantity
15	<b>R302-18</b>	302-18	Zerk - Grease Press Style	1	
16	<b>R100-4926</b>	100-4926	Bearing - Reel Self Aligning	2	
17	<b>R95-8753-01</b>	95-8753, 95-8753-01	Reel Frame - 27 in	1	
18	<b>R150476</b>	3-3816, 3-6462, 57-4910	Screw - Bedknife 5/16-18 x 5/8	10	
18	<b>R150477</b>	57-4910	Screw - Bedknife 5/16-18 x 1/2	10	
19	<b>R94-2703</b>	94-2703	Plug - Plastic Spindle Housing	1	
20	<b>R95-8739</b>	95-8739, 95-8739-01	Bed Bar - Fits 27 Units	1	
21	<b>R105-0171-03</b>	105-0171-03	Weight-End	1	
22	<b>R16-9759</b>	16-9759	Link Assy	4	
23	<b>R3230-2</b>	01-173-0508, 25-25-AGD, 3230-16, 3230-2, 513624, 513633, 513635, 900038P	Bolt - Carriage	4	
24	<b>R3256-74</b>	3256-74	Washer - Flat	4	
25	<b>R3296-29</b>	1-804256, 3290-357, 3296-29, 915662P	Locknut - 5/16-18 ESNA	4	

All original equipment manufacturers names and part numbers are used for identification purposes only, and we are in no way implying that our products are original equipment parts. Prices subject to change without notice.



## Replaces Toro Reelmaster 2600-D Parts

27in Cutting Unit - Models 03210 & 03211

Reel & Bedknife



Item No	R&R Part No.	OEM Part No.	Description	Qty Req	Order Quantity
26	R302-5	21-6010, 302-11, 302-37, 302-47, 302-5, 302-57, 302-58, 302-6, 31-0300, 32-9660, 60-0800, 62-3880, 92-4181	Fitting - Grease	4	
27	R3290-55	3290-55	Rivet - 5/32 x 3/8 Pop Rivet	6	
28	R323-2	01-178-0604, 323-2	Bolt - Hex HD 3/8-16 x 1	2	
29	R400264	01-150-0180, 01-178-0610, 20-48-AD, 20-48-AGD, 32-9160, 3224-3, 323-29, 323-7, 400264, 908035P	Bolt - Hex HD 3/8-16 x 1-1/4	2	
30	R3254-6	01-166-0010, 01-166-0280, 01-166-0610, 3253-5, 3254-18, 3254-6, 3290-223, 48-9370	Washer - Lock 3/8	2	
31	R32121-36	32121-36	Pin-Spring	4	
32	R323-11	01-150-1440, 01-178-0618, 20-52-AD, 3224-7, 323-11	Bolt - 3/8-16 x 2 1/4 GR5	2	

All original equipment manufacturers names and part numbers are used for identification purposes only, and we are in no way implying that our products are original equipment parts. Prices subject to change without notice.



## Replaces Toro Reelmaster 2600-D Parts

27in Cutting Unit - Models 03210 & 03211

Reel & Bedknife



Item No	R&R Part No.	OEM Part No.	Description	Qty Req	Order Quantity
33	<b>R110-1718</b>	110-1718	Screw-HHF	4	
34	<b>R94-8945</b>	94-8945	Bushing - Bronze - Link Bar	4	
35	<b>R93-8806</b>	93-8806	Washer-Hardened	8	
36	<b>R323-10</b>	01-150-0680, 01-178-0616, 100-6663, 100-8320, 1489, 20-51-AD, 20-51-AGD, 3224-6, 323-10, 323-35, 908336	Bolt - Hex HD 3/8-16 x 2	4	
38	<b>R93-8825</b>	93-8825	Coupling - RH Reel	1	
39	<b>R93-8826</b>	93-8826	Coupling - LH Reel	1	
41	<b>R93-8827</b>	93-8827	Spider - Reel Coupling	1	
42	<b>R61-3280</b>	61-3280	Cover - Rubber Side	2	
43	<b>R61-3290</b>	61-3290	Cover - Rubber Center	2	
44	<b>R56-9510</b>	56-9510	Bushing - Rubber For Bed Bar / RI	6	
45	<b>R56-9520</b>	56-9520	Bushing - Nyliner	6	
46	<b>R95-8877</b>	106-7536, 93-2957, 95-2762, 95-8877	Handle - Bed Bar Adjustment	1	
47	<b>R93-2959</b>	93-2959	Spacer - Bed Bar Assy	1	
48	<b>R95-8752</b>	93-9767, 95-8752	Arm - Spring	1	
49	<b>R93-2892</b>	93-2892	Pivot - Plastic - Bed Bar	1	

All original equipment manufacturers names and part numbers are used for identification purposes only, and we are in no way implying that our products are original equipment parts. Prices subject to change without notice.



## Replaces Toro Reelmaster 2600-D Parts

27in Cutting Unit - Models 03210 & 03211

Reel & Bedknife



Item No	R&R Part No.	OEM Part No.	Description	Qty Req	Order Quantity
50	<b>R29-8910-01</b>	29-8910	Washer - Flat 1/2	2	
51	<b>R93-8849</b>	61-1130, 93-8817, 93-8849	Shield - Rear Grass Fits 27 in Units	1	
52	<b>R94-3621</b>	94-3621	Shield - Top Incl. Safety Decal 27 in	1	
55	<b>R99-3404</b>	93-6930, 99-3404	Housing-Bearing	2	
56	<b>R14-4479</b>	14-4479	Bracket - Assy - Rear Roller	2	
57	<b>R14-4489</b>	14-4489	Bracket - Assy - Front Roller	2	
58	<b>R61-0910</b>	61-0910	Bracket	4	
59	<b>R3296-39</b>	32127-25, 32128-36, 3290-357, 3296-17, 3296-22, 3296-39, 915663P, 99-7443	Locknut - 3/8-16 Nylon	20	
60	<b>R3231-25</b>	01-173-0610, 30-9970, 3231-25, 3231-3, 900064P	Bolt - Carriage 3/8-16 x 1-1/4	2	
61	<b>R61-0790</b>	323-57, 61-0790	Bolt - Roller Adjustment	4	
62	<b>R61-0420</b>	61-0420, 61-0420-01	Support - HOC	4	
63	<b>R3295-48</b>	3295-48	Rivet - 3/16 x 3/8 Tub	12	
63	<b>R700382</b>	700382	Rivet - Guard	12	
67	<b>R353-949</b>	353-949, 60-3520	O-Ring	1	

All original equipment manufacturers names and part numbers are used for identification purposes only, and we are in no way implying that our products are original equipment parts. Prices subject to change without notice.



## Replaces Toro Reelmaster 2600-D Parts

27in Cutting Unit - Models 03210 & 03211

Reel & Bedknife



Item No	R&R Part No.	OEM Part No.	Description	Qty Req	Order Quantity
71	<b>R16-9769</b>	16-9769	Housing - Bed Bar - Adj. Side	1	
72	<b>R14-4459</b>	14-4459	Housing - w/Bushing For Bed Bar	1	
73	<b>R444754</b>	01-189-0518, 3296-4	Locknut - 5/16-24 Center	1	
73	<b>R3296-4</b>	3296-4, 3296-43, 65-9360	Locknut - ESNA 5/16-24	1	
74	<b>R3219-2</b>	01-188-0524, 22-12-BJKD, 3219-2, 915720	Nut - 5/16-24 Zinc	1	
77	<b>R323-6</b>	01-150-0010, 01-178-0608, 20-47-AD, 20-47-AGD, 3224-2, 323-6, 49-3510, 908034P, 908332	Bolt - Hex HD 3/8-16 x 1 GR5 YZ	8	
84	<b>R61-1950</b>	61-1950	Washer - Nylon - Bed Bar	1	
85	<b>R62-7120</b>	62-7120	Washer	1	
86	<b>R3256-56</b>	3256-56, 60-4750	Washer	1	
87	<b>R3253-4</b>	01-166-0110, 01-166-0510, 23-10-GD, 24-7170, 30-8520, 3253-4, 48-9350, 48-9360, 48-9570, 68-9420, 99-7577	Washer - Lock 5/16 Zinc	1	

All original equipment manufacturers names and part numbers are used for identification purposes only, and we are in no way implying that our products are original equipment parts. Prices subject to change without notice.





## Replaces Toro Reelmaster 2600-D Parts

27in Cutting Unit - Models 03210 & 03211  
Reel & Bedknife



Item No	R&R Part No.	OEM Part No.	Description	Qty Req	Order Quantity
88	R322-3	01-150-1420, 01-178-0506, 20-24-AD, 20-24-AGD, 322-3, 48-9270, 513339, 908017P	Bolt - Hex HD 5/16-18 x 3/4	1	
88	R322-2	322-2, 513338P	Bolt - Hex HD 5/16-18 x 5/8	1	
92	R71-3690	61-0630, 71-3690	Spade - Bent	4	
93	R61-3790	61-3790	Plate-HOC, Front	2	
94	R61-3800	61-3800	Plate - HOC Rear	2	
95	R93-6960	93-6960	Cover - Bearing Holder	1	
96	R93-6981	93-6981	Spacer	8	
97	R94-3695-01	94-3695, 94-3695-01	Plate - Side Reel RH	1	
98	R94-3697-01	94-3697, 94-3697-01	Plate - Side Reel LH	1	
99	R3290-467	3290-467	Pin-Hair	4	
100	R94-5979	94-5979	Gasket	1	
101	R32144-10	32140-81, 32144-10, 32144-3, 34-140-AMVD	Bolt - 1/4-20 x 3/4 Serrated Hx Wshr	2	
102	R67-7960	27-2890, 62-5070, 67-7960	Decal - Warning	1	
102	R93-6688	93-6688	Decal - Warning	1	

All original equipment manufacturers names and part numbers are used for identification purposes only, and we are in no way implying that our products are original equipment parts. Prices subject to change without notice.